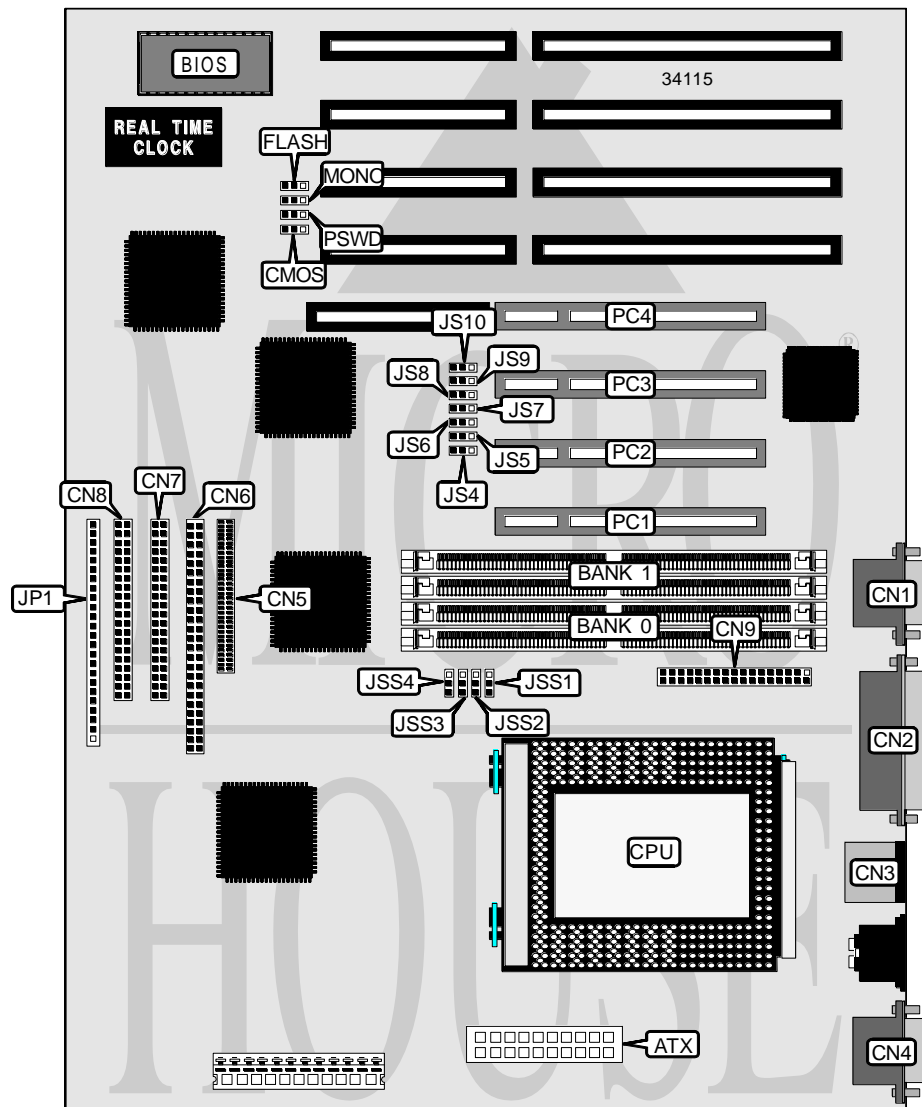


YOUNG MICRO SYSTEMS, INC.

MB - 6000

Processor	Pentium Pro
Processor Speed	133/150/166/180/200MHz
Chip Set	Intel
Video Chip Set	None
Maximum Onboard Memory	512MB (EDO supported)
Maximum Video Memory	None
Cache	256/512KB (located on Pentium Pro CPU)
BIOS	AMI
Dimensions	305mm x 244mm
I/O Options	32-bit PCI slots (4), floppy drive interface, green PC connector, IDE interfaces (2), Ultra Wide SCSI interface, Fast SCSI interface, parallel port, PS/2 mouse port, serial ports (2), IR connector, ATX power connector
NPU Options	None



Continued on next page. . .

YOUNG MICRO SYSTEMS, INC.

MB - 6000

... continued from previous page

CONNECTIONS			
Purpose	Location	Purpose	Location
ATX power connector	ATX	Soft on power	JP1 pins 1 & 2
Serial port 2	CN1	Turbo LED	JP1 pins 3 & 4
Parallel port	CN2	Power LED & keylock	JP1 pins 5 - 9
PS/2 mouse port	CN3	IDE interface LED	JP1 pins 10 - 13
Serial port 1	CN4	Speaker	JP1 pins 14 - 17
Ultra Wide SCSI interface	CN5	Reset switch	JP1 pins 18 & 19
Fast SCSI interface	CN6	Green PC connector	JP1 pins 20 & 21
IDE interface 1	CN7	IR connector	JP1 pins 22 - 26
IDE interface 2	CN8	32-bit PCI slots	PC1 – PC4
Floppy drive interface	CN9		

USER CONFIGURABLE SETTINGS		
Function	Label	Position
í SCSI high byte termination select auto	JS8	Pins 1 & 2 closed
SCSI high byte termination select always	JS8	Pins 2 & 3 closed
í RAID support select normal	JS9	Pins 1 & 2 closed
RAID support select ARO-1130 RAID card installed	JS9	Pins 2 & 3 closed
í SCSI data bus width select Fast 8-bit	JS10	Pins 1 & 2 closed
SCSI data bus width select Fast and Wide 16-bit	JS10	Pins 2 & 3 closed
Flash BIOS voltage select 12v	FLASH	Pins 1 & 2 closed
Flash BIOS voltage select 5v	FLASH	Pins 2 & 3 closed
í CMOS memory normal operation	CMOS	Pins 1 & 2 closed
CMOS memory clear	CMOS	Pins 2 & 3 closed
í Monitor type select color	MONO	Pins 1 & 2 closed
Monitor type select monochrome	MONO	Pins 2 & 3 closed
í Password normal operation	PSWD	Pins 1 & 2 closed
Password clear	PSWD	Pins 2 & 3 closed

DRAM CONFIGURATION		
Size	Bank 0	Bank 1
8MB	(2) 1M x 36	None
16MB	(2) 2M x 36	None
16MB	(2) 1M x 36	(2) 1M x 36
32MB	(2) 4M x 36	None
32MB	(2) 2M x 36	(2) 2M x 36
64MB	(2) 8M x 36	None
64MB	(2) 4M x 36	(2) 4M x 36
128MB	(2) 8M x 36	(2) 8M x 36
128MB	(2) 16M x 36	None
256MB	(2) 16M x 36	(2) 16M x 36
256MB	(2) 32M x 36	None
512MB	(2) 32M x 36	(2) 32M x 36
Note: Board accepts EDO memory. Board also accepts x 32 SIMMs.		

Continued on next page. . .

YOUNG MICRO SYSTEMS, INC.

MB - 6000

... continued from previous page

CACHE CONFIGURATION

Note: 256KB/512KB cache is located on the Pentium Pro CPU.

CPU SPEED SELECTION

CPU speed	Clock speed	Multiplier	JS4	JS5	JS6	JS7
133MHz	66MHz	2x	2 & 3	2 & 3	2 & 3	2 & 3
150MHz	60MHz	2.5x	1 & 2	1 & 2	1 & 2	1 & 2
166MHz	66MHz	2.5x	2 & 3	2 & 3	2 & 3	2 & 3
180MHz	60MHz	3x	1 & 2	1 & 2	1 & 2	1 & 2
200MHz	66MHz	3x	2 & 3	2 & 3	2 & 3	2 & 3

Note: Pins designated should be in the closed position.

CPU SPEED SELECTION (CON'T)

CPU speed	Clock speed	Multiplier	JSS1	JSS2	JSS3	JSS4
133MHz	66MHz	2x	1 & 2	1 & 2	1 & 2	1 & 2
150MHz	60MHz	2.5x	1 & 2	1 & 2	1 & 2	2 & 3
166MHz	66MHz	2.5x	1 & 2	1 & 2	1 & 2	2 & 3
180MHz	60MHz	3x	1 & 2	1 & 2	2 & 3	1 & 2
200MHz	66MHz	3x	1 & 2	1 & 2	2 & 3	1 & 2

Note: Pins designated should be in the closed position.