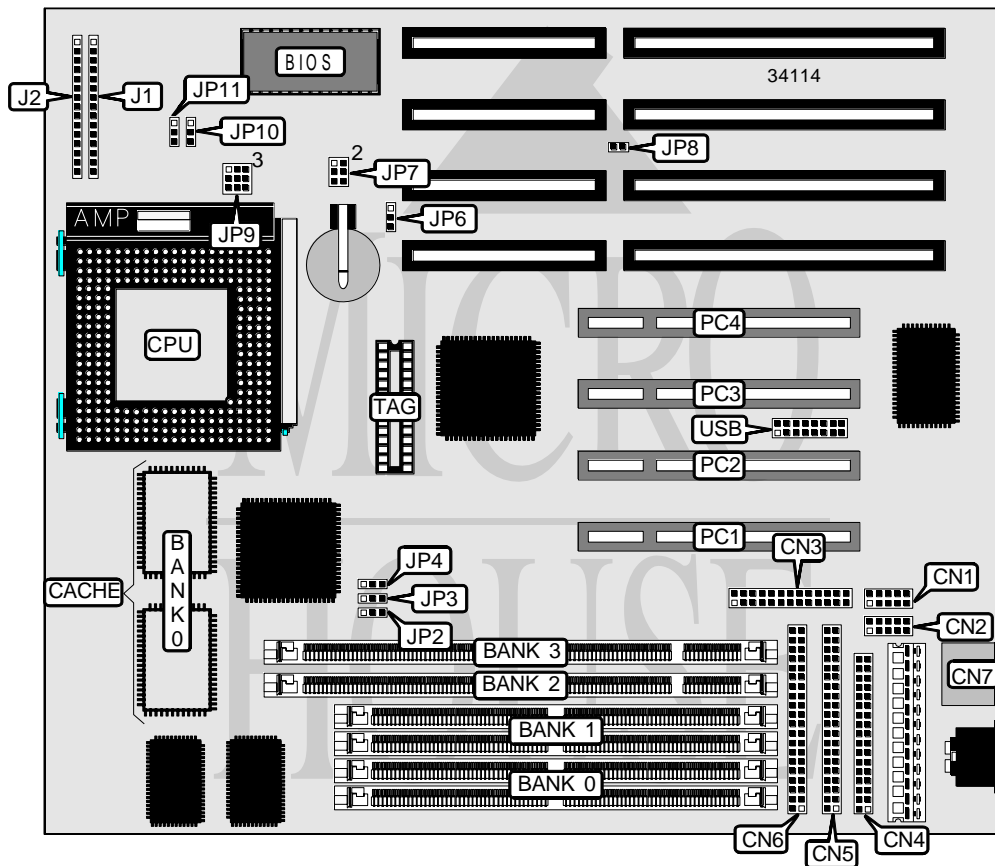


# YOUNG MICRO SYSTEMS, INC.

## MB-5820

|                               |   |
|-------------------------------|---|
| <b>Processor</b>              | CX M1/AM K5/Pentium   |
| <b>Processor Speed</b>        | 75/90/100/120/133/150/166/180/200MHz  |
| <b>Chip Set</b>               | Intel   |
| <b>Video Chip Set</b>         | None  |
| <b>Maximum Onboard Memory</b> | 128MB (EDO supported)   |
| <b>Maximum Video Memory</b>   | None  |
| <b>Cache</b>                  | 256/512KB   |
| <b>BIOS</b>                   | Award   |
| <b>Dimensions</b>             | 250mm x 220mm   |
| <b>I/O Options</b>            | 32-bit PCI slots (4), floppy drive interface, green PC connector, IDE interfaces (2), parallel port, PS/2 mouse port, serial ports (2), IR connector, USB connector |
| <b>NPU Options</b>            | None  |



Continued on next page. . .

# YOUNG MICRO SYSTEMS, INC.

## MB - 5820

... continued from previous page

| CONNECTIONS            |               |                     |                 |
|------------------------|---------------|---------------------|-----------------|
| Purpose                | Location      | Purpose             | Location        |
| Serial port 2          | CN1           | IR connector        | J1 pins 6 - 10  |
| Serial port 1          | CN2           | Green PC connector  | J1 pins 14 & 15 |
| Parallel port          | CN3           | Speaker             | J2 pins 1 - 4   |
| Floppy drive interface | CN4           | Reset switch        | J2 pins 5 & 6   |
| IDE interface 1        | CN5           | Power LED & keylock | J2 pins 8 - 12  |
| IDE interface 2        | CN6           | Turbo LED           | J2 pins 14 & 15 |
| PS/2 mouse port        | CN7           | 32-bit PCI slots    | PC1 - PC4       |
| IDE interface LED      | J1 pins 1 - 4 | USB connector       | USB             |

| USER CONFIGURABLE SETTINGS     |       |                   |
|--------------------------------|-------|-------------------|
| Function                       | Label | Position          |
| ? CMOS memory normal operation | JP6   | Pins 1 & 2 closed |
| CMOS memory clear              | JP6   | Pins 2 & 3 closed |

| DIMM/DRAM CONFIGURATION |             |             |             |             |
|-------------------------|-------------|-------------|-------------|-------------|
| Size                    | Bank 0      | Bank 1      | Bank 2      | Bank 3      |
| 8MB                     | (2) 1M x 36 | None        | None        | None        |
| 8MB                     | None        | None        | (1) 1M x 64 | None        |
| 16MB                    | (2) 2M x 36 | None        | None        | None        |
| 16MB                    | None        | None        | (1) 2M x 64 | None        |
| 16MB                    | (2) 1M x 36 | (2) 1M x 36 | None        | None        |
| 16MB                    | (2) 1M x 36 | None        | None        | (1) 1M x 64 |
| 24MB                    | None        | (2) 2M x 36 | (1) 1M x 64 | None        |
| 32MB                    | (2) 4M x 36 | None        | None        | None        |
| 32MB                    | None        | None        | (1) 4M x 64 | None        |
| 32MB                    | (2) 2M x 36 | None        | None        | (1) 2M x 64 |
| 40MB                    | (2) 4M x 36 | (2) 1M x 36 | None        | None        |
| 40MB                    | (2) 4M x 36 | None        | None        | (1) 1M x 64 |
| 48MB                    | (2) 2M x 36 | None        | None        | (1) 4M x 64 |
| 48MB                    | (2) 4M x 36 | (2) 2M x 36 | None        | None        |
| 48MB                    | (2) 4M x 36 | None        | None        | (1) 2M x 64 |
| 64MB                    | (2) 8M x 36 | None        | None        | None        |
| 64MB                    | None        | None        | None        | (1) 8M x 64 |
| 64MB                    | (2) 4M x 36 | (2) 4M x 36 | None        | None        |
| 64MB                    | (2) 4M x 36 | None        | None        | (1) 4M x 64 |
| 64MB                    | None        | None        | (1) 4M x 64 | (1) 4M x 64 |
| 72MB                    | (2) 8M x 36 | (2) 1M x 36 | None        | None        |
| 72MB                    | (2) 8M x 36 | None        | None        | (1) 1M x 64 |
| 80MB                    | None        | (2) 2M x 36 | (1) 8M x 64 | None        |
| 80MB                    | (2) 8M x 36 | (2) 2M x 36 | None        | None        |

Continued on next page. . .

# YOUNG MICRO SYSTEMS, INC.

## MB-5820

... continued from previous page

| DIMM/DRAM CONFIGURATION (CON'T) |             |             |             |             |
|---------------------------------|-------------|-------------|-------------|-------------|
| Size                            | Bank 0      | Bank 1      | Bank 2      | Bank 3      |
| 96MB                            | (2) 4M x 36 | None        | None        | (1) 8M x 64 |
| 96MB                            | (2) 8M x 36 | (2) 4M x 36 | None        | None        |
| 96MB                            | None        | (2) 8M x 36 | (1) 4M x 64 | None        |
| 128MB                           | None        | None        | (1) 8M x 64 | (1) 8M x 64 |
| 128MB                           | (2) 8M x 36 | (2) 8M x 36 | None        | None        |
| 128MB                           | (2) 8M x 36 | None        | None        | (1) 8M x 64 |

Note: Board accepts EDO memory.

| CACHE CONFIGURATION |              |              |
|---------------------|--------------|--------------|
| Size                | Bank 0       | TAG          |
| 256KB               | (2) 32K x 32 | Unidentified |
| 512KB               | (2) 64K x 32 | Unidentified |

| CPU SPEED SELECTION (CYRIX) |             |            |       |       |       |        |       |       |
|-----------------------------|-------------|------------|-------|-------|-------|--------|-------|-------|
| CPU speed                   | Clock speed | Multiplier | JP2   | JP3   | JP4   | JP8    | JP10  | JP11  |
| 120MHz                      | 50MHz       | 2x         | 2 & 3 | 2 & 3 | 1 & 2 | Closed | 2 & 3 | 1 & 2 |
| 133MHz                      | 55MHz       | 2x         | 1 & 2 | 2 & 3 | 1 & 2 | Open   | 2 & 3 | 1 & 2 |
| 150MHz                      | 60MHz       | 2x         | 2 & 3 | 1 & 2 | 1 & 2 | Open   | 2 & 3 | 1 & 2 |
| 166MHz                      | 66MHz       | 2x         | 1 & 2 | 1 & 2 | 1 & 2 | Open   | 2 & 3 | 1 & 2 |
| 200MHz                      | 75MHz       | 2x         | 1 & 2 | 1 & 2 | 2 & 3 | Open   | 2 & 3 | 1 & 2 |

Note: Pins designated should be in the closed position.

| CPU SPEED SELECTION (AMD) |             |            |       |       |       |        |       |       |
|---------------------------|-------------|------------|-------|-------|-------|--------|-------|-------|
| CPU speed                 | Clock speed | Multiplier | JP2   | JP3   | JP4   | JP8    | JP10  | JP11  |
| 75MHz                     | 50MHz       | 1.5x       | 2 & 3 | 2 & 3 | 1 & 2 | Closed | 1 & 2 | 1 & 2 |
| 90MHz                     | 60MHz       | 1.5x       | 2 & 3 | 1 & 2 | 1 & 2 | Open   | 1 & 2 | 1 & 2 |
| 100MHz                    | 66MHz       | 1.5x       | 1 & 2 | 1 & 2 | 1 & 2 | Open   | 1 & 2 | 1 & 2 |
| 120MHz                    | 60MHz       | 2x         | 2 & 3 | 1 & 2 | 1 & 2 | Open   | 1 & 2 | 1 & 2 |
| 133MHz                    | 66MHz       | 2x         | 1 & 2 | 1 & 2 | 1 & 2 | Open   | 1 & 2 | 1 & 2 |
| 150MHz                    | 60MHz       | 2.5x       | 2 & 3 | 1 & 2 | 1 & 2 | Open   | 2 & 3 | 1 & 2 |
| 166MHz                    | 66MHz       | 2.5x       | 1 & 2 | 1 & 2 | 1 & 2 | Open   | 2 & 3 | 1 & 2 |

Note: Pins designated should be in the closed position.

Continued on next page...

**YOUNG MICRO SYSTEMS, INC.**  
**MB - 5820**

... continued from previous page

| CPU SPEED SELECTION (INTEL) |             |            |       |       |       |        |       |       |
|-----------------------------|-------------|------------|-------|-------|-------|--------|-------|-------|
| CPU speed                   | Clock speed | Multiplier | JP2   | JP3   | JP4   | JP8    | JP10  | JP11  |
| 75MHz                       | 50MHz       | 1.5x       | 2 & 3 | 2 & 3 | 1 & 2 | Closed | 1 & 2 | 1 & 2 |
| 90MHz                       | 60MHz       | 1.5x       | 2 & 3 | 1 & 2 | 1 & 2 | Open   | 1 & 2 | 1 & 2 |
| 100MHz                      | 66MHz       | 1.5x       | 1 & 2 | 1 & 2 | 1 & 2 | Open   | 1 & 2 | 1 & 2 |
| 120MHz                      | 60MHz       | 2x         | 2 & 3 | 1 & 2 | 1 & 2 | Open   | 2 & 3 | 1 & 2 |
| 133MHz                      | 66MHz       | 2x         | 1 & 2 | 1 & 2 | 1 & 2 | Open   | 2 & 3 | 1 & 2 |
| 150MHz                      | 60MHz       | 2.5x       | 2 & 3 | 1 & 2 | 1 & 2 | Open   | 2 & 3 | 2 & 3 |
| 166MHz                      | 66MHz       | 2.5x       | 1 & 2 | 1 & 2 | 1 & 2 | Open   | 2 & 3 | 2 & 3 |
| 180MHz                      | 60MHz       | 3x         | 2 & 3 | 1 & 2 | 1 & 2 | Open   | 1 & 2 | 2 & 3 |
| 200MHz                      | 66MHz       | 3x         | 1 & 2 | 1 & 2 | 1 & 2 | Open   | 1 & 2 | 2 & 3 |

Note: Pins designated should be in the closed position.

| CPU VOLTAGE SELECTION (SINGLE) |       |                     |
|--------------------------------|-------|---------------------|
| Voltage                        | JP7   | JP9                 |
| 3.38v                          | 2 & 4 | 1 & 2, 4 & 5, 7 & 8 |
| 3.52v                          | 4 & 6 | 1 & 2, 4 & 5, 7 & 8 |

Note: Pins designated should be in the closed position.

| CPU VOLTAGE SELECTION (DUAL) |        |       |                     |
|------------------------------|--------|-------|---------------------|
| Voltage                      | V core | JP7   | JP9                 |
| 3.38v                        | 2.5v   | 1 & 3 | 2 & 3, 5 & 6, 7 & 9 |
| 3.38v                        | 2.8v   | 3 & 5 | 2 & 3, 5 & 6, 7 & 9 |

Note: Pins designated should be in the closed position.