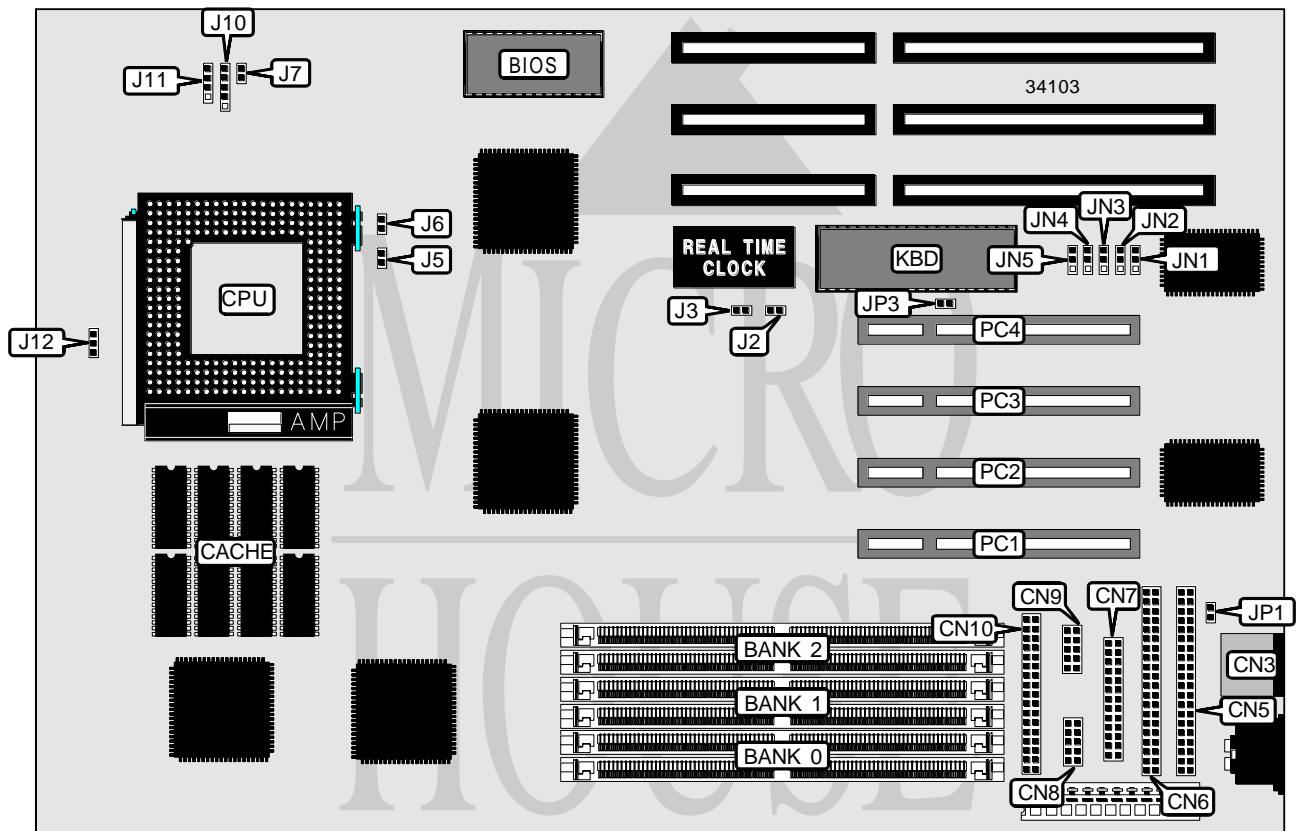


# GENOA SYSTEMS CORPORATION P100-I/O

<b>Processor</b>	Pentium
<b>Processor Speed</b>	75/90/100MHz
<b>Chip Set</b>	Intel
<b>Video Chip Set</b>	None
<b>Maximum Onboard Memory</b>	192MB
<b>Maximum Video Memory</b>	None
<b>Cache</b>	256KB
<b>BIOS</b>	Award
<b>Dimensions</b>	330mm x 218mm
<b>I/O Options</b>	32-bit PCI slots (4), floppy drive interface, IDE interfaces (2), parallel port, PS/2 mouse port, serial ports (2)
<b>NPU Options</b>	None



Continued on next page. . .

# GENOA SYSTEMS CORPORATION

## P100-I/O

... continued from previous page

CONNECTIONS			
Purpose	Location	Purpose	Location
PS/2 mouse port	CN3	Floppy drive interface	CN10
IDE interface 1	CN5	Reset switch	J7
IDE interface 2	CN6	Power LED & keylock	J10
Parallel port	CN7	Speaker	J11
Serial port 1	CN8	IDE interface LED	JP1
Serial port 2	CN9	32-bit PCI slots	PC1 – PC4

USER CONFIGURABLE SETTINGS		
Function	Label	Position
í CMOS memory normal operation	J3	Open
CMOS memory clear	J3	Closed
í CPU pipeline mode enabled	J5	Closed
CMOS memory clear	J5	Open
í Cache write select write back	J6	Open
Cache write select write through	J6	Closed
í CPU bus frequency open	J12	Pins 2 & 3 closed
CMOS memory clear	J12	Pins 1 & 2 closed
í Parallel port output enabled	JN2	Pins 1 & 2 closed
Parallel port output disabled	JN2	Pins 2 & 3 closed
í Parallel port direction select input	JN3	Pins 2 & 3 closed
Parallel port direction select output	JN3	Pins 1 & 2 closed
í Password disabled	JP3	Open
Password enabled	JP3	Closed

DRAM CONFIGURATION			
Size	Bank 0	Bank 1	Bank 2
2MB	(2) 256K x 36	None	None
4MB	(2) 256K x 36	(2) 256K x 36	None
6MB	(2) 256K x 36	(2) 256K x 36	(2) 256K x 36
8MB	(2) 1M x 36	None	None
10MB	(2) 1M x 36	(2) 256K x 36	None
12MB	(2) 1M x 36	(2) 256K x 36	(2) 256K x 36
16MB	(2) 1M x 36	(2) 1M x 36	None
18MB	(2) 1M x 36	(2) 1M x 36	(2) 256K x 36
24MB	(2) 1M x 36	(2) 1M x 36	(2) 1M x 36
32MB	(2) 4M x 36	None	None
34MB	(2) 4M x 36	(2) 256K x 36	None
36MB	(2) 4M x 36	(2) 256K x 36	(2) 256K x 36
40MB	(2) 4M x 36	(2) 1M x 36	None
42MB	(2) 4M x 36	(2) 1M x 36	(2) 256K x 36
48MB	(2) 4M x 36	(2) 1M x 36	(2) 1M x 36
64MB	(2) 4M x 36	(2) 4M x 36	None

Continued on next page. . .

# GENOA SYSTEMS CORPORATION

## P100-I/O

... continued from previous page

DRAM CONFIGURATION			
Size	Bank 0	Bank 1	Bank 2
64MB	(2) 8M x 36	None	None
66MB	(2) 4M x 36	(2) 4M x 36	(2) 256K x 36
66MB	(2) 8M x 36	(2) 256K x 36	None
68MB	(2) 8M x 36	(2) 256K x 36	(2) 256K x 36
72MB	(2) 4M x 36	(2) 4M x 36	(2) 1M x 36
72MB	(2) 8M x 36	(2) 1M x 36	None
74MB	(2) 8M x 36	(2) 1M x 36	(2) 256K x 36
80MB	(2) 8M x 36	(2) 1M x 36	(2) 1M x 36
96MB	(2) 4M x 36	(2) 4M x 36	(2) 4M x 36
96MB	(2) 8M x 36	(2) 4M x 36	None
98MB	(2) 8M x 36	(2) 4M x 36	(2) 256K x 36
104MB	(2) 8M x 36	(2) 4M x 36	(2) 1M x 36
128MB	(2) 8M x 36	(2) 4M x 36	(2) 4M x 36
128MB	(2) 8M x 36	(2) 8M x 36	None
130MB	(2) 8M x 36	(2) 8M x 36	(2) 256K x 36
136MB	(2) 8M x 36	(2) 8M x 36	(2) 1M x 36
160MB	(2) 8M x 36	(2) 8M x 36	(2) 4M x 36
192MB	(2) 8M x 36	(2) 8M x 36	(2) 8M x 36

CACHE CONFIGURATION
Note: Board is factory installed with 256KB cache.

DMA CHANNEL SELECTION		
Channel	JN4	JN5
1	Pins 2 & 3 closed	Pins 2 & 3 closed
í 3	Pins 1 & 2 closed	Pins 1 & 2 closed

BASE I/O ADDRESS SELECTION		
Base address	Data address	JN1
26EH	26FH	Pins 1 & 2 closed
í 398H	399H	Pins 2 & 3 closed

PCI IRQ14 SELECTION	
Setting	J2
í No PCI IDE card installed	Open
PCI IDE card with TEKRAM DC-690B or ATRONICS IDE-2015P	Pins 1 & 2 closed
PCI IDE card with CMD CS6400C	Pins 2 & 3 closed