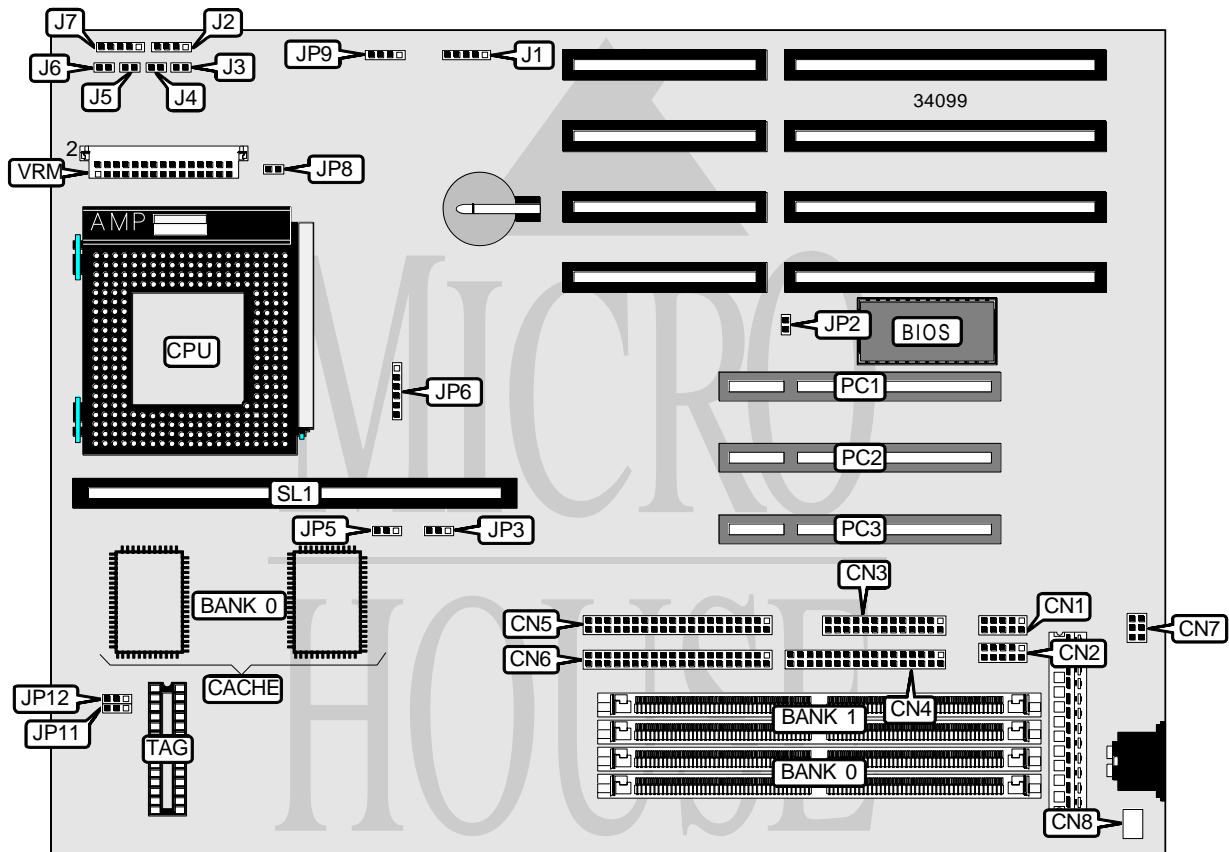


# GENOA SYSTEMS CORPORATION

## TURBOEXPRESS 586-HX

<b>Processor</b>	CX M1/AM K5/Pentium
<b>Processor Speed</b>	75/83/90/100/110/120/133/150/166/180/200MHz
<b>Chip Set</b>	Intel
<b>Video Chip Set</b>	None
<b>Maximum Onboard Memory</b>	512MB DRAM (EDO supported)
<b>Maximum Video Memory</b>	None
<b>Cache</b>	256/512KB
<b>BIOS</b>	Award
<b>Dimensions</b>	330mm x 218mm
<b>I/O Options</b>	32-bit PCI slots (3), floppy drive interface, green PC connector, IDE interfaces (2), parallel port, PS/2 mouse interface, serial ports (2), cache slot, IR connector, USB connector, VRM connector
<b>NPU Options</b>	None



Continued on next page. . .

# GENOA SYSTEMS CORPORATION TURBOEXPRESS 586-HX

... continued from previous page

CONNECTIONS			
Purpose	Location	Purpose	Location
Serial port 2	CN1	Speaker	J2
Serial port 1	CN2	Reset switch	J3
Parallel port	CN3	Turbo LED	J4
Floppy drive interface	CN4	Green PC connector	J5
IDE interface 2	CN5	IDE interface LED	J6
IDE interface 1	CN6	Power LED & keylock	J7
PS/2 mouse interface	CN7	32-bit PCI slots	PC1 - PC3
USB connector	CN8	Cache slot	SL1
IR connector	J1	VRM connector	VRM

USER CONFIGURABLE SETTINGS		
Function	Label	Position
í CMOS memory normal operation	JP2	Open
CMOS memory clear	JP2	Closed

DRAM CONFIGURATION		
Size	Bank 0	Bank 1
4MB	None	(2) 512K x 36
4MB	(2) 512K x 36	None
8MB	(2) 1M x 36	None
8MB	(2) 512K x 36	(2) 512K x 36
12MB	(2) 1M x 36	(2) 512K x 36
16MB	(2) 2M x 36	None
16MB	(2) 1M x 36	(2) 1M x 36
20MB	(2) 2M x 36	(2) 512K x 36
24MB	(2) 2M x 36	(2) 1M x 36
32MB	(2) 4M x 36	None
32MB	(2) 2M x 36	(2) 2M x 36
36MB	(2) 4M x 36	(2) 512K x 36
40MB	(2) 4M x 36	(2) 1M x 36
48MB	(2) 4M x 36	(2) 2M x 36
64MB	(2) 8M x 36	None
64MB	(2) 4M x 36	(2) 4M x 36
68MB	(2) 8M x 36	(2) 512K x 36
72MB	(2) 8M x 36	(2) 1M x 36
80MB	(2) 8M x 36	(2) 2M x 36
96MB	(2) 8M x 36	(2) 4M x 36
128MB	(2) 16M x 36	None
128MB	(2) 8M x 36	(2) 8M x 36
132MB	(2) 16M x 36	(2) 512K x 36
136MB	(2) 16M x 36	(2) 1M x 36

Continued on next page. ...

# GENOA SYSTEMS CORPORATION

## TURBOEXPRESS 586-HX

... continued from previous page

DRAM CONFIGURATION (CON'T)		
Size	Bank 0	Bank 1
144MB	(2) 16M x 36	(2) 2M x 36
160MB	(2) 16M x 36	(2) 4M x 36
192MB	(2) 16M x 36	(2) 8M x 36
256MB	(2) 32M x 36	None
256MB	(2) 16M x 36	(2) 16M x 36
260MB	(2) 32M x 36	(2) 512K x 36
264MB	(2) 32M x 36	(2) 1M x 36
272MB	(2) 32M x 36	(2) 2M x 36
288MB	(2) 32M x 36	(2) 4M x 36
320MB	(2) 32M x 36	(2) 8M x 36
384MB	(2) 32M x 36	(2) 16M x 36
384MB	(2) 16M x 36	(2) 32M x 36
512MB	(2) 32M x 36	(2) 32M x 36

Note: Board accepts EDO memory. Board also accepts x 32 SIMMs. Banks are interchangeable.

CACHE CONFIGURATION			
Size	Bank 0	SL1	TAG
256KB (A)	(2) 32K x 32	Not installed	(1) 8K/16K/32K x 8
256KB (B)	None	256KB module installed	None
512KB (A)	(2) 64K x 32	Not installed	(1) 16K/32K x 8
512KB (B)	(2) 32K x 32	256KB module installed	(1) 16K/32K x 8
512KB (C)	None	512KB module installed	None

CACHE JUMPER CONFIGURATION				
Size	JP3	JP5	JP11	JP12
256KB (A)	Pins 2 & 3 closed	Pins 1 & 2 closed	Pins 1 & 2 closed	Pins 1 & 2 closed
256KB (B)	Pins 1 & 2 closed	Pins 2 & 3 closed	Pins 1 & 2 closed	Pins 1 & 2 closed
512KB (A)	Pins 2 & 3 closed	Pins 1 & 2 closed	Pins 1 & 2 closed	Pins 2 & 3 closed
512KB (B)	Pins 2 & 3 closed	Pins 1 & 2 closed	Pins 2 & 3 closed	Pins 2 & 3 closed
512KB (C)	Pins 1 & 2 closed	Pins 2 & 3 closed	Pins 1 & 2 closed	Pins 1 & 2 closed

Continued on next page. . .

# GENOA SYSTEMS CORPORATION TURBOEXPRESS 586-HX

... continued from previous page

CPU SPEED SELECTION				
CPU speed	Clock speed	Multiplier	JP6	JP9
75MHz	50MHz	1.5x	1 & 2, 3 & 4	Open
83MHz	55MHz	1.5x	Open	Open
90MHz	60MHz	1.5x	3 & 4	Open
100MHz	66MHz	1.5x	1 & 2	Open
100MHz	50MHz	2x	1 & 2, 3 & 4	1 & 2
110MHz	55MHz	2x	Open	1 & 2
120MHz	60MHz	2x	3 & 4	1 & 2
133MHz	66MHz	2x	1 & 2	1 & 2
150MHz	50MHz	3x	1 & 2, 3 & 4	3 & 4
150MHz	60MHz	2.5x	3 & 4	1 & 2, 3 & 4
166MHz	66MHz	2.5x	1 & 2	1 & 2, 3 & 4
180MHz	60MHz	3x	3 & 4	3 & 4
200MHz	66MHz	3x	1 & 2	3 & 4

Note: Pins designated should be in the closed position.

CPU TYPE SELECTION	
Type	VRM
P54C/P54CT/P54CTB	Pins 11 & 13, 12 & 14 closed
P55C	VRM module installed

CPU VOLTAGE SELECTION	
Voltage	JP8
3.3v	Open
3.45v - 3.6v	Closed