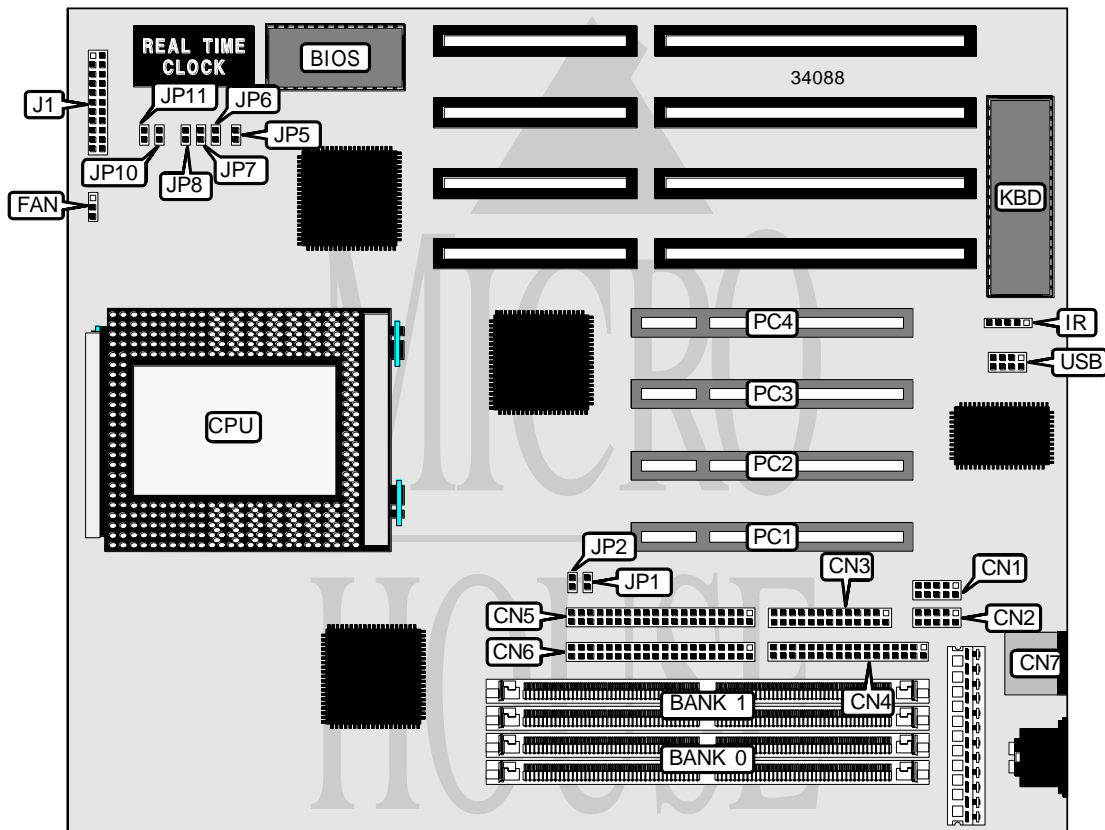


A-TREND TECHNOLOGY CORPORATION

ATC - 6000

Processor	Pentium Pro
Processor Speed	150/166/180/200MHz
Chip Set	Intel
Video Chip Set	None
Maximum Onboard Memory	256MB (EDO supported)
Maximum Video Memory	None
Cache	256/512KB (located on Pentium Pro CPU)
BIOS	AMI
Dimensions	285mm x 220mm
I/O Options	32-bit PCI slots (4), floppy drive interface, green PC connector, IDE interfaces (2), parallel port, PS/2 mouse port, serial ports (2), IR connector, USB connector
NPU Options	None



Continued on next page . . .

A-TREND TECHNOLOGY CORPORATION

A T C - 6 0 0 0

... continued from previous page

CONNECTIONS			
Purpose	Location	Purpose	Location
Serial port 1	CN1	Reset switch	J1 pins 1 & 2
Serial port 2	CN2	Green PC connector	J1 pins 4 & 5
Parallel port	CN3	Turbo LED	J1 pins 7 & 8
Floppy drive interface	CN4	IDE interface LED	J1 pins 10 & 11
IDE interface 1	CN5	Speaker	J1 pins 12 - 15
IDE interface 2	CN6	Power LED & keylock	J1 pins 17 - 21
PS/2 mouse port	CN7	32-bit PCI slots	PC1 – PC4
Chassis fan power	FAN	USB connector	USB
IR connector	IR		

USER CONFIGURABLE SETTINGS		
Function	Label	Position
í CMOS memory normal operation	JP5	Open
CMOS memory clear	JP5	Closed

DRAM CONFIGURATION		
Size	Bank 0	Bank 1
8MB	(2) 1M x 36	None
16MB	(2) 2M x 36	None
16MB	(2) 1M x 36	(2) 1M x 36
24MB	(2) 2M x 36	(2) 1M x 36
32MB	(2) 4M x 36	None
32MB	(2) 2M x 36	(2) 2M x 36
40MB	(2) 4M x 36	(2) 1M x 36
48MB	(2) 4M x 36	(2) 2M x 36
64MB	(2) 8M x 36	None
64MB	(2) 4M x 36	(2) 4M x 36
72MB	(2) 8M x 36	(2) 1M x 36
80MB	(2) 8M x 36	(2) 2M x 36
96MB	(2) 8M x 36	(2) 4M x 36
128MB	(2) 8M x 36	(2) 8M x 36
128MB	(2) 16M x 36	None
136MB	(2) 16M x 36	(2) 1M x 36
144MB	(2) 16M x 36	(2) 2M x 36
160MB	(2) 16M x 36	(2) 4M x 36
192MB	(2) 16M x 36	(2) 8M x 36
256MB	(2) 16M x 36	(2) 16M x 36

Note: Board accepts EDO memory. Banks are interchangeable.

CACHE CONFIGURATION
Note: 256KB/512KB cache is located on the Pentium Pro CPU.

Continued on next page. . .

A-TREND TECHNOLOGY CORPORATION

ATC - 6000

... continued from previous page

CPU SPEED SELECTION						
CPU speed	Clock speed	Multiplier	JP1	JP2	JP6	JP7
150MHz	60MHz	2.5x	Closed	Open	Open	Closed
166MHz	66MHz	2.5x	Open	Closed	Open	Closed
180MHz	60MHz	3x	Closed	Open	Closed	Open
200MHz	66MHz	3x	Open	Closed	Closed	Open

CPU SPEED SELECTION (CON'T)					
CPU speed	Clock speed	Multiplier	JP8	JP10	JP11
150MHz	60MHz	2.5x	Closed	Closed	Open
166MHz	66MHz	2.5x	Closed	Open	Closed
180MHz	60MHz	3x	Closed	Closed	Open
200MHz	66MHz	3x	Closed	Open	Closed