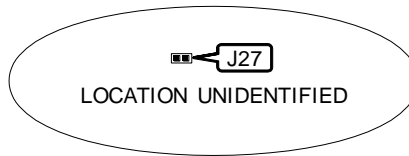
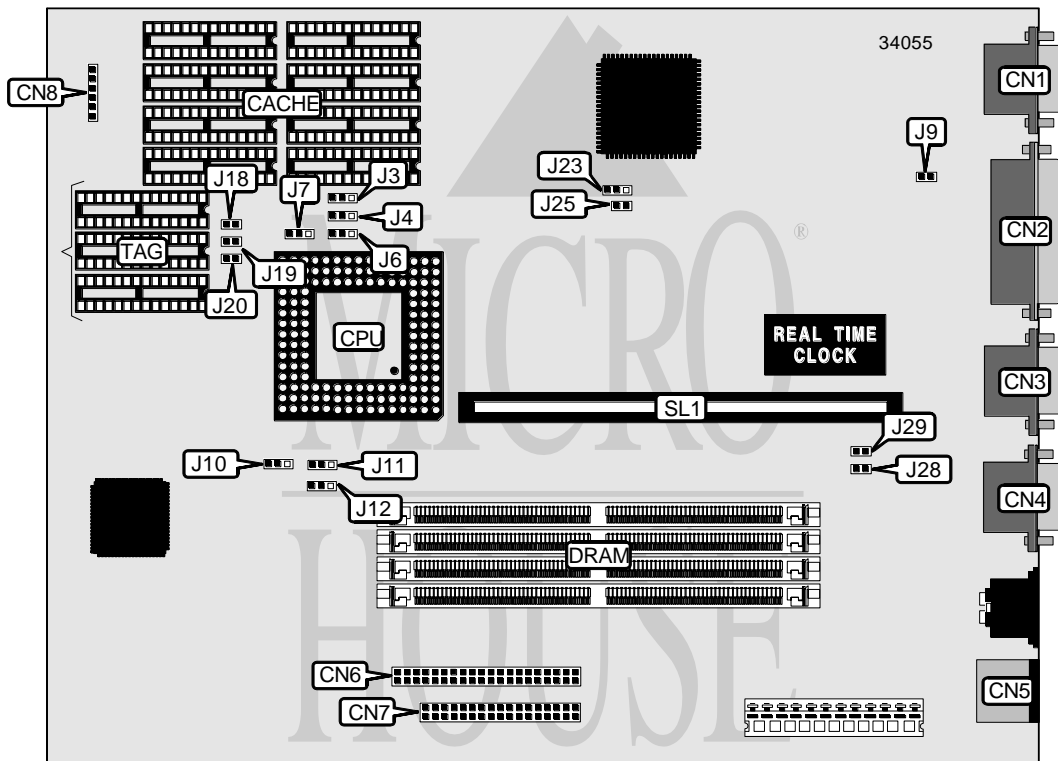


DIGITAL EQUIPMENT CORPORATION DECPC LPV, DECPC LPV+

Processor	80486SX/80486DX/80486DX2
Processor Speed	25/33/40/50(internal)/50/66(internal)MHz
Chip Set	Unidentified
Video Chip Set	None
Maximum Onboard Memory	64MB
Maximum Video Memory	None
Cache	128/256KB
BIOS	Unidentified
Dimensions	254mm x 218mm
I/O Options	Floppy drive interface, IDE interface, parallel port, PS/2 mouse port, serial ports (2), VGA port, riser slot
NPU Options	None



Continued on next page. . .

DIGITAL EQUIPMENT CORPORATION

DECPC LPV, DECPC LPV+

... continued from previous page

CONNECTIONS			
Purpose	Location	Purpose	Location
VGA port	CN1	IDE interface	CN6
Parallel port	CN2	Floppy drive interface	CN7
Serial port	CN3	Front panel connector	CN8
Serial port	CN4	Cache slot	SL1
PS/2 mouse port	CN5		

USER CONFIGURABLE SETTINGS		
Function	Label	Position
í Reset switch enabled	J9	Closed
Reset switch disabled	J9	Open
í RDY signal select VLRDY >CPURDY (connects through CPU bus)	J10	Pins 1 & 2 closed
RDY signal select VLRDY >CPURDY (synchronized through chipset)	J10	Pins 2 & 3 closed
í On board video enabled	J23	Pins 1 & 2 closed
On board video disabled	J23	Pins 2 & 3 closed
í VGA IRQ9 disabled	J25	Open
VGA IRQ9 enabled	J25	Closed
í Flash BIOS normal operation	J27	Open
Flash BIOS recovery mode	J27	Closed
í Factory configured - do not alter	J28	Open
í Monitor type select monochrome	J29	Open
Monitor type select color	J29	Closed

DRAM CONFIGURATION				
Size	Bank 0	Bank 1	Bank 2	Bank 3
4MB	(1) 1M x 36	None	None	None
8MB	(1) 1M x 36	(1) 1M x 36	None	None
12MB	(1) 1M x 36	(1) 1M x 36	(1) 1M x 36	None
16MB	(1) 1M x 36	(1) 1M x 36	(1) 1M x 36	(1) 1M x 36
16MB	(1) 4M x 36	None	None	None
20MB	(1) 1M x 36	(1) 4M x 36	None	None
24MB	(1) 1M x 36	(1) 1M x 36	(1) 4M x 36	None
32MB	(1) 4M x 36	(1) 4M x 36	None	None
40MB	(1) 1M x 36	(1) 1M x 36	(1) 4M x 36	(1) 4M x 36
48MB	(1) 4M x 36	(1) 4M x 36	(1) 4M x 36	None
64MB	(1) 4M x 36	(1) 4M x 36	(1) 4M x 36	(1) 4M x 36

CACHE CONFIGURATION			
Size	Bank 0	Bank 1	TAG
128KB	(4) 32K x 8	None	Unidentified
256KB	(4) 32K x 8	(4) 32K x 8	Unidentified

Continued on next page. . .

DIGITAL EQUIPMENT CORPORATION

DECPC LPV, DECPC LPV+

... continued from previous page

CACHE JUMPER CONFIGURATION				
Size	J3	J4	J6	J7
None	Open	Open	Open	Open
128KB	Pins 1 & 2 closed	Pins 1 & 2 closed	Pins 1 & 2 closed	Pins 1 & 2 closed
256KB	Pins 2 & 3 closed	Pins 2 & 3 closed	Pins 2 & 3 closed	Pins 2 & 3 closed

CPU SPEED SELECTION			
Speed	J18	J19	J20
25MHz	Open	Closed	Closed
33MHz	Closed	Open	Closed
40MHz	Closed	Open	Open
50iMHz	Open	Closed	Closed
50MHz	Open	Open	Open
66iMHz	Closed	Open	Closed

CPU TYPE SELECTION		
Type	J11	J12
80486SX	Pins 2 & 3 closed	Pins 2 & 3 closed
80486DX	Pins 1 & 2 closed	Pins 1 & 2 closed
80486DX2	Pins 1 & 2 closed	Pins 1 & 2 closed