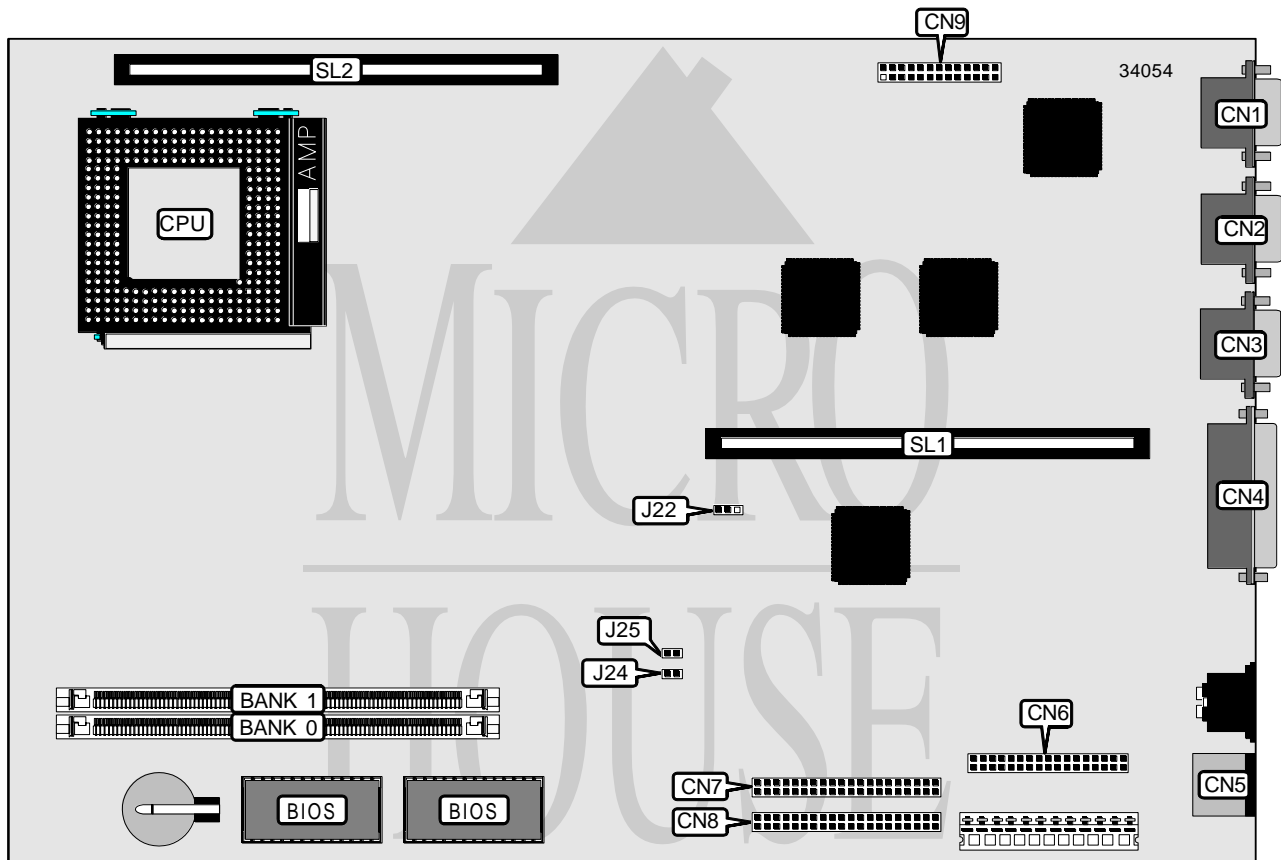


# DIGITAL EQUIPMENT CORPORATION VENTURIS 560

<b>Processor</b>	Pentium
<b>Processor Speed</b>	60MHz
<b>Chip Set</b>	Unidentified
<b>Video Chip Set</b>	S3
<b>Maximum Onboard Memory</b>	128MB
<b>Maximum Video Memory</b>	1MB
<b>Cache</b>	256KB
<b>BIOS</b>	Unidentified
<b>Dimensions</b>	330mm x 218mm
<b>I/O Options</b>	Floppy drive interface, IDE interfaces (2), parallel port, PS/2 mouse port, serial ports (2), VGA feature connector, VGA port, riser slot, cache slot
<b>NPU Options</b>	None



CONNECTIONS			
Purpose	Location	Purpose	Location
VGA port	CN1	IDE interface	CN7
Serial port	CN2	IDE interface	CN8
Serial port	CN3	VGA feature connector	CN9
Parallel port	CN4	Riser slot	SL1
PS/2 mouse port	CN5	Cache slot	SL2
Floppy drive interface	CN6		

Continued on next page. . .

# DIGITAL EQUIPMENT CORPORATION VENTURIS 560

... continued from previous page

USER CONFIGURABLE SETTINGS		
Function	Label	Position
í CMOS memory normal operation	J22	Pins 1 & 2 closed
CMOS memory clear	J22	Pins 2 & 3 closed
í Password normal operation	J24	Open
Password clear	J24	Closed
í Flash BIOS normal operation	J25	Open
Flash BIOS recovery mode	J25	Closed

DRAM CONFIGURATION		
Size	Bank 0	Bank 1
4MB	(1) 1M x 36	None
8MB	(1) 2M x 36	None
8MB	(1) 1M x 36	(1) 1M x 36
16MB	(1) 2M x 36	(1) 2M x 36
32MB	(1) 4M x 36	(1) 4M x 36
32MB	(1) 8M x 36	None
64MB	(1) 8M x 36	(1) 8M x 36

CACHE CONFIGURATION	
Size	SL2
256KB	256KB module installed

VIDEO MEMORY CONFIGURATION
Note: 1MB video memory is factory installed and is not configurable. The location is unidentified.