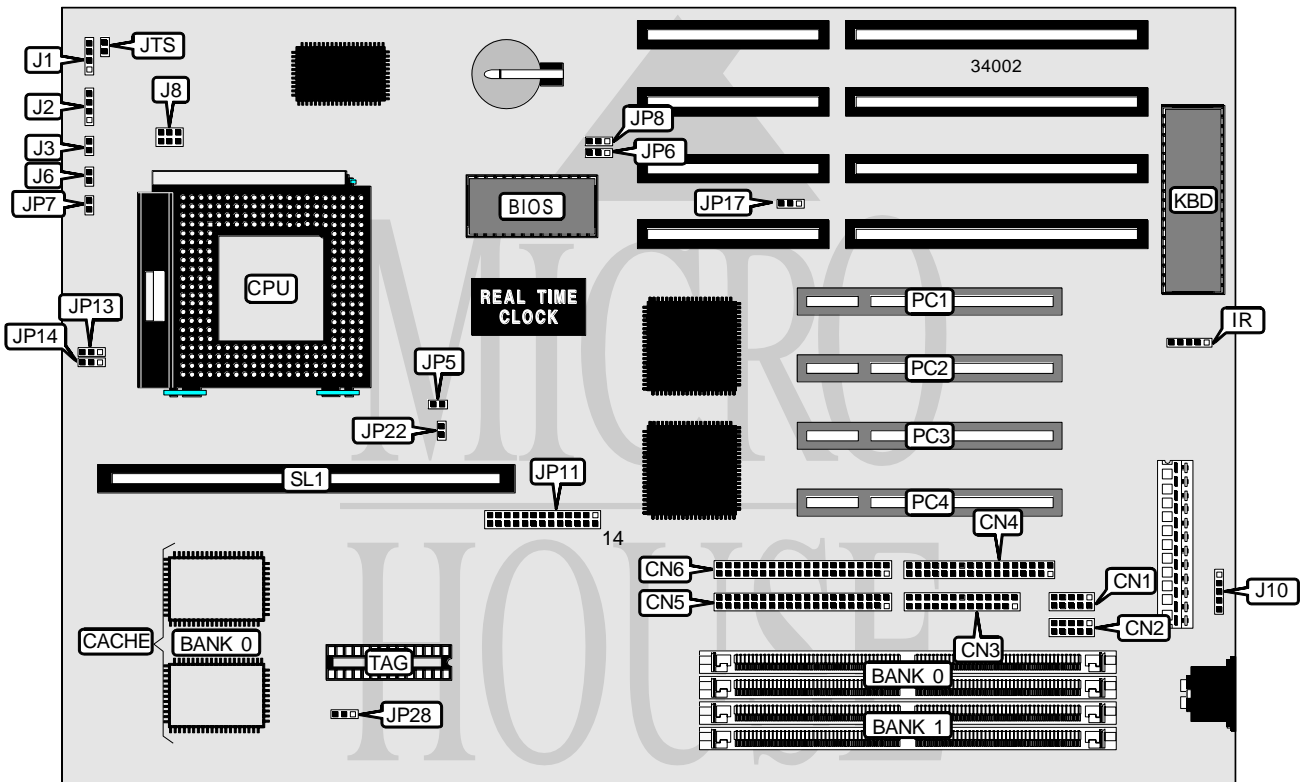


# ACQUIRE COMPUTER SYSTEMS, INC.

## ACS-2277-55

<b>Processor</b>	Pentium
<b>Processor Speed</b>	90/100/120/133/150/166/180/200MHz
<b>Chip Set</b>	Intel
<b>Video Chip Set</b>	None
<b>Maximum Onboard Memory</b>	512MB (EDO supported)
<b>Maximum Video Memory</b>	None
<b>Cache</b>	256KB
<b>BIOS</b>	Unidentified
<b>Dimensions</b>	330mm x 218mm
<b>I/O Options</b>	32-bit PCI slots (4), parallel port, PS/2 mouse interface, floppy drive interface, green PC connector, IDE interfaces (2), serial ports (2), cache slot, IR connector
<b>NPU Options</b>	None



Continued on next page...

ACQUIRE COMPUTER SYSTEMS, INC.  
ACS - 2277 - 55

... continued from previous page

CONNECTIONS			
Purpose	Location	Purpose	Location
Serial port 1	CN1	Green PC LED	J6
Serial port 2	CN2	Chassis fan power	J8
Parallel port	CN3	PS/2 mouse interface	J10
Floppy drive interface	CN4	IR connector	J25
IDE interface 2	CN5	Turbo switch	JTS
IDE interface 1	CN6	IDE interface LED	JP5
Power LED & keylock	J1	Green PC connector	JP7
Speaker	J2	32-bit PCI slots	PC1 - PC4
Reset switch	J3	Cache slot	SL1

USER CONFIGURABLE SETTINGS		
Function	Label	Position
Flash BIOS normal operation	JP6	Pins 1 & 2 closed
Flash BIOS boot block enabled	JP6	Pins 2 & 3 closed
Flash BIOS voltage select 12v	JP8	Pins 2 & 3 closed
Flash BIOS voltage select 5v	JP8	Pins 1 & 2 closed
Jumper information unavailable	JP22	Unidentified

DRAM CONFIGURATION		
Size	Bank 0	Bank 1
8MB	(2) 1M x 36	None
16MB	(2) 1M x 36	(2) 1M x 36
16MB	(2) 2M x 36	None
24MB	(2) 1M x 36	(2) 2M x 36
24MB	(2) 2M x 36	(2) 1M x 36
32MB	(2) 2M x 36	(2) 2M x 36
32MB	(2) 4M x 36	None
40MB	(2) 1M x 36	(2) 4M x 36
40MB	(2) 4M x 36	(2) 1M x 36
48MB	(2) 2M x 36	(2) 4M x 36
48MB	(2) 4M x 36	(2) 2M x 36
64MB	(2) 4M x 36	(2) 4M x 36
64MB	(2) 8M x 36	None
72MB	(2) 1M x 36	(2) 8M x 36
72MB	(2) 8M x 36	(2) 1M x 36
80MB	(2) 2M x 36	(2) 8M x 36
80MB	(2) 8M x 36	(2) 2M x 36
96MB	(2) 4M x 36	(2) 8M x 36

Continued on next page...

# ACQUIRE COMPUTER SYSTEMS, INC.

## ACS-2277-55

... continued from previous page

DRAM CONFIGURATION (CON'T)		
Size	Bank 0	Bank 1
96MB	(2) 8M x 36	(2) 4M x 36
128MB	(2) 8M x 36	(2) 8M x 36
256MB	(2) 16M x 36	(2) 16M x 36
512MB	(2) 32M x 36	(2) 32M x 36

Note: Board accepts EDO memory. Board also accepts x 32 SIMMs.

CACHE CONFIGURATION			
Size	Bank 0	TAG	SL1
256KB (A)	(2) 32K x 32	Unidentified	None
256KB (B)	None	Unidentified	256KB module installed

CACHE JUMPER CONFIGURATION	
Size	JP28
256KB (A)	Pins 1 & 2 closed
256KB (B)	Pins 2 & 3 closed

CPU SPEED SELECTION		
CPU speed	Clock speed	JP11
90MHz	60MHz	Pins 2 & 15 closed
100MHz	66MHz	Pins 3 & 16 closed
120MHz	60MHz	Pins 4 & 17 closed
133MHz	66MHz	Pins 5 & 18 closed
150MHz	60MHz	Pins 6 & 19 closed
166MHz	66MHz	Pins 7 & 20 closed
180MHz	60MHz	Pins 8 & 21 closed
200MHz	66MHz	Pins 9 & 22 closed

CPU TYPE SELECTION		
Type	JP13	JP14
P54C/P54CS/P54CT/P54CTB	1 & 2	1 & 2
P55C	2 & 3	2 & 3

CPU AT BUS CLOCK SELECTION	
Setting	JP17
PCICLK/4	Pins 2 & 3 closed
PCICLK/3	Pins 1 & 2 closed