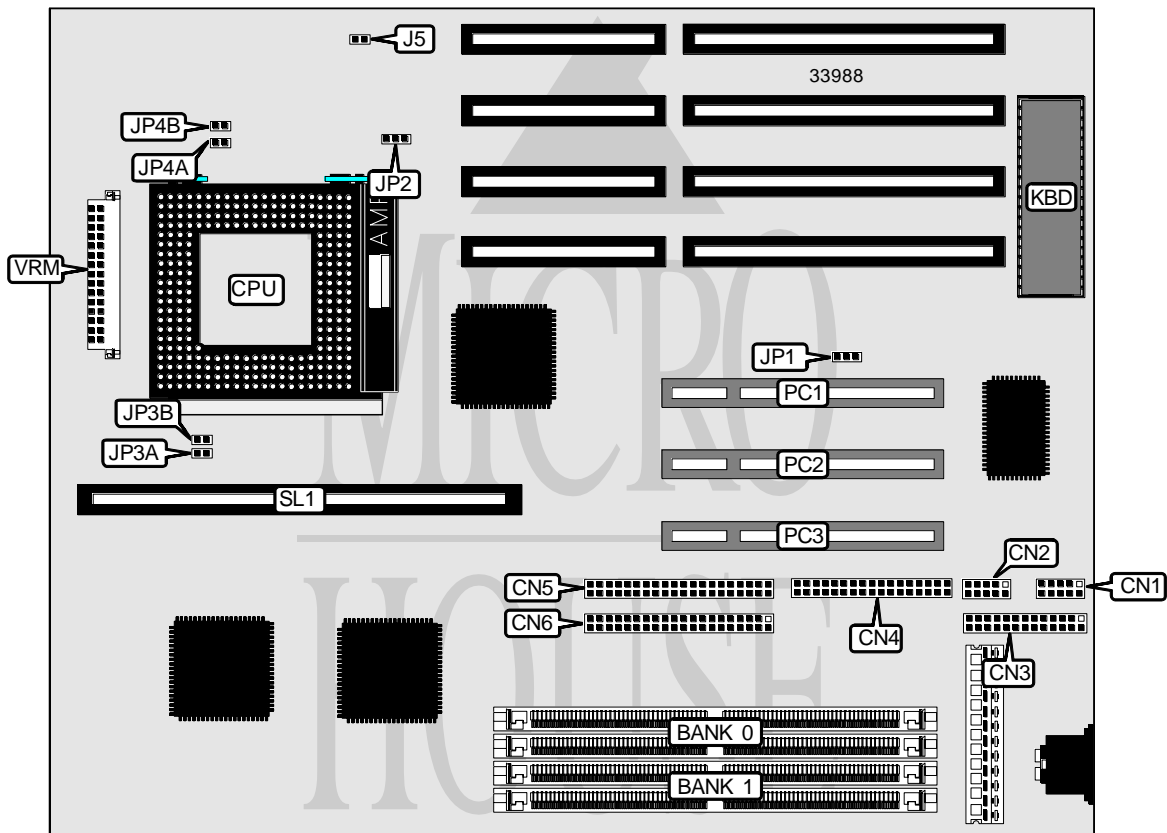


PC WARE INTERNATIONAL, INC. MB - PISCES

Processor	CX M1/AM K5/Pentium
Processor Speed	75/90/100/120/133/150/166/180/200MHz
Chip Set	OPTI
Video Chip Set	None
Maximum Onboard Memory	256MB (EDO supported)
Maximum Video Memory	None
Cache	256/512KB
BIOS	Unidentified
Dimensions	260mm x 220mm
I/O Options	32-bit PCI slots (4), floppy drive interface, IDE interfaces (2), parallel port, serial ports (2), cache slot, VRM connector
NPU Options	None



Continued on next page. . .

PC WARE INTERNATIONAL, INC.

MB - PISCES

... continued from previous page

CONNECTIONS			
Purpose	Location	Purpose	Location
Serial port 1	CN1	IDE interface 1	CN6
Serial port 2	CN2	Front panel connector	J5
Parallel port	CN3	32-bit PCI slots	PC1 – PC3
Floppy drive interface	CN4	Cache slot	SL1
IDE interface 2	CN5	VRM connector	VRM

USER CONFIGURABLE SETTINGS		
Function	Label	Position
Flash BIOS voltage select 12v	JP1	Pins 1 & 2 closed
Flash BIOS voltage select 5v	JP1	Pins 2 & 3 closed

DRAM CONFIGURATION		
Size	Bank 0	Bank 1
8MB	(2) 1M x 36	None
16MB	(2) 2M x 36	None
16MB	(2) 1M x 36	(2) 1M x 36
24MB	(2) 2M x 36	(2) 1M x 36
32MB	(2) 4M x 36	None
32MB	(2) 2M x 36	(2) 2M x 36
40MB	(2) 4M x 36	(2) 1M x 36
48MB	(2) 4M x 36	(2) 2M x 36
64MB	(2) 8M x 36	None
64MB	(2) 8M x 36	None
64MB	(2) 4M x 36	(2) 4M x 36
72MB	(2) 8M x 36	(2) 1M x 36
72MB	(2) 8M x 36	(2) 1M x 36
80MB	(2) 8M x 36	(2) 2M x 36
80MB	(2) 8M x 36	(2) 2M x 36
96MB	(2) 8M x 36	(2) 4M x 36
96MB	(2) 8M x 36	(2) 4M x 36
128MB	(2) 8M x 36	(2) 8M x 36
128MB	(2) 16M x 36	None
136MB	(2) 16M x 36	(2) 1M x 36
144MB	(2) 16M x 36	(2) 2M x 36
160MB	(2) 16M x 36	(2) 4M x 36
192MB	(2) 16M x 36	(2) 8M x 36
256MB	(2) 16M x 36	(2) 16M x 36

Note: Board accepts EDO memory.

Continued on next page...

PC WARE INTERNATIONAL, INC.

MB-PISCES

... continued from previous page

CACHE CONFIGURATION	
Size	SL1
256KB	256KB module installed
512KB	512KB module installed

CPU SPEED SELECTION (CYRIX)						
CPU speed	Clock speed	Multiplier	JP3A	JP3B	JP4A	JP4B
120MHz	60MHz	2x	Open	Closed	Open	Closed
133MHz	66MHz	2x	Closed	Open	Open	Closed
150MHz	60MHz	2x	Open	Closed	Open	Closed
166MHz	66MHz	2x	Closed	Open	Open	Closed

CPU SPEED SELECTION (AMD)						
CPU speed	Clock speed	Multiplier	JP3A	JP3B	JP4A	JP4B
75MHz	50MHz	1.5x	Closed	Closed	Open	Open
90MHz	60MHz	1.5x	Open	Closed	Open	Open
100MHz	66MHz	1.5x	Closed	Open	Open	Open

CPU SPEED SELECTION (INTEL)						
CPU speed	Clock speed	Multiplier	JP3A	JP3B	JP4A	JP4B
75MHz	50MHz	1.5x	Closed	Closed	Open	Open
90MHz	60MHz	1.5x	Open	Closed	Open	Open
100MHz	66MHz	1.5x	Closed	Open	Open	Open
120MHz	60MHz	2x	Open	Closed	Open	Closed
133MHz	66MHz	2x	Closed	Open	Open	Closed
150MHz	60MHz	2.5x	Open	Closed	Closed	Closed
166MHz	66MHz	2.5x	Closed	Open	Closed	Closed
180MHz	60MHz	3x	Open	Closed	Closed	Open
200MHz	66MHz	3x	Closed	Open	Closed	Open

CPU VOLTAGE SELECTION	
Voltage	JP2
3.3v	Pins 2 & 3 closed
3.52v	Pins 1 & 2 closed