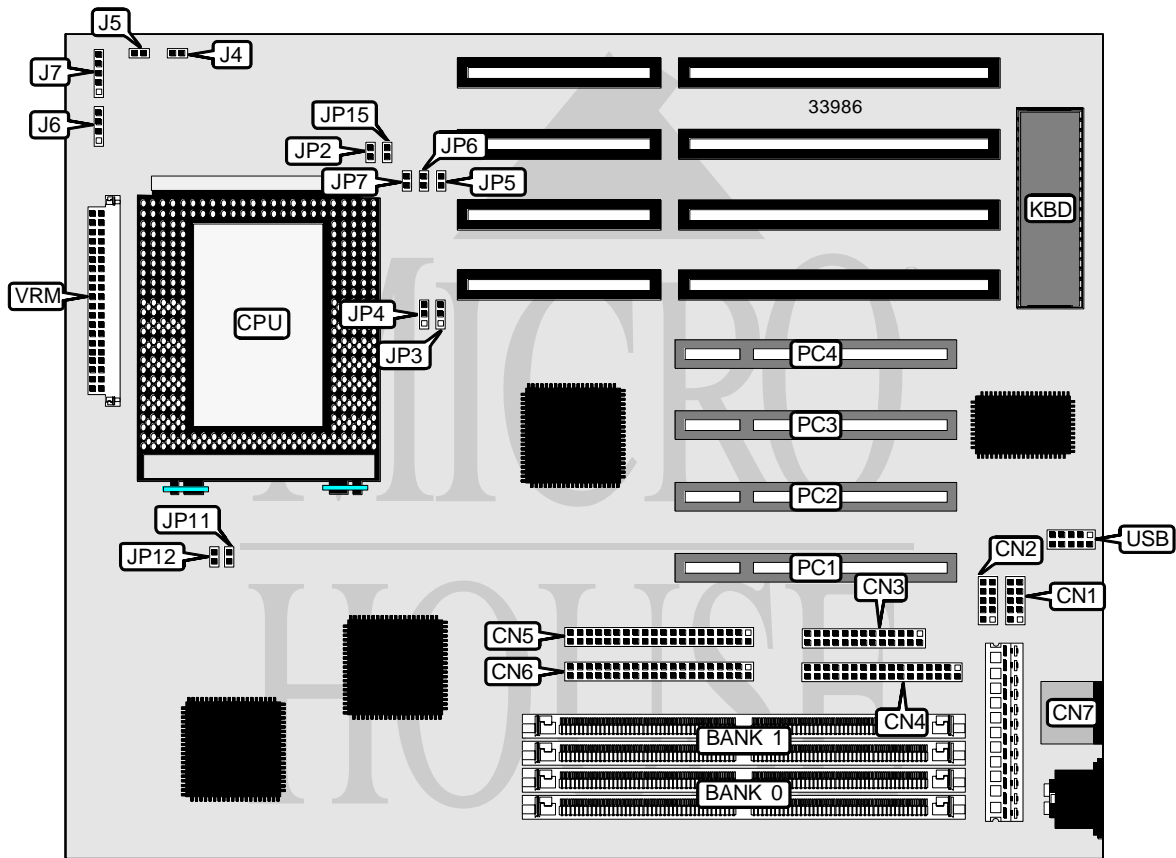


PC WARE INTERNATIONAL, INC. MB-TAURUS

Processor	Pentium Pro
Processor Speed	150/166/180/200MHz
Chip Set	Intel
Video Chip Set	None
Maximum Onboard Memory	128MB
Maximum Video Memory	None
Cache	256/512KB (located on Pentium Pro CPU)
BIOS	Award
Dimensions	254mm x 218mm
I/O Options	32-bit PCI slots (4), floppy drive interface, green PC connector, IDE interfaces (2), parallel port, PS/2 mouse port, serial ports (2), VRM connector, USB connector
NPU Options	None



Continued on next page. . .

PC WARE INTERNATIONAL, INC.

MB-TAURUS

... continued from previous page

CONNECTIONS			
Purpose	Location	Purpose	Location
Serial port 1	CN1	Reset switch	J5
Serial port 2	CN2	Speaker	J6
Parallel port	CN3	Power LED & keylock	J7
Floppy drive interface	CN4	Green PC connector	JP3 pins 1 & 2
IDE interface 2	CN5	32-bit PCI slots	PC1 – PC4
IDE interface 1	CN6	USB connector	USB
PS/2 mouse port	CN7	VRM connector	VRM
IDE interface LED	J4		

USER CONFIGURABLE SETTINGS		
Function	Label	Position
? Flash BIOS voltage select 12v	JP2	Pins 2 & 3 closed
Flash BIOS voltage select 5v	JP2	Pins 1 & 2 closed
? CMOS memory normal operation	JP15	Open
CMOS memory clear	JP15	Closed

DRAM CONFIGURATION		
Size	Bank 0	Bank 1
8MB	(2) 1M x 36	None
16MB	(2) 2M x 36	None
16MB	(2) 1M x 36	(2) 1M x 36
24MB	(2) 2M x 36	(2) 1M x 36
32MB	(2) 4M x 36	None
32MB	(2) 2M x 36	(2) 2M x 36
40MB	(2) 4M x 36	(2) 1M x 36
48MB	(2) 4M x 36	(2) 2M x 36
64MB	(2) 8M x 36	None
64MB	(2) 4M x 36	(2) 4M x 36
72MB	(2) 8M x 36	(2) 1M x 36
80MB	(2) 8M x 36	(2) 2M x 36
96MB	(2) 8M x 36	(2) 4M x 36
128MB	(2) 8M x 36	(2) 8M x 36

CACHE CONFIGURATION
Note: 256KB/512KB cache is located on the Pentium Pro CPU.

Continued on next page...

PC WARE INTERNATIONAL, INC.

MB-TAURUS

... continued from previous page

CPU SPEED SELECTION								
CPU speed	Clock speed	Multiplier	JP4	JP5	JP6	JP7	JP11	JP12
150MHz	60MHz	2.5x	1 & 2	Open	Closed	Closed	Closed	Open
166MHz	66MHz	2.5x	1 & 2	Open	Closed	Closed	Open	Closed
180MHz	60MHz	3x	1 & 2	Closed	Open	Closed	Closed	Open
200MHz	66MHz	3x	1 & 2	Closed	Open	Closed	Open	Closed

Note: Pins designated should be in the closed position.