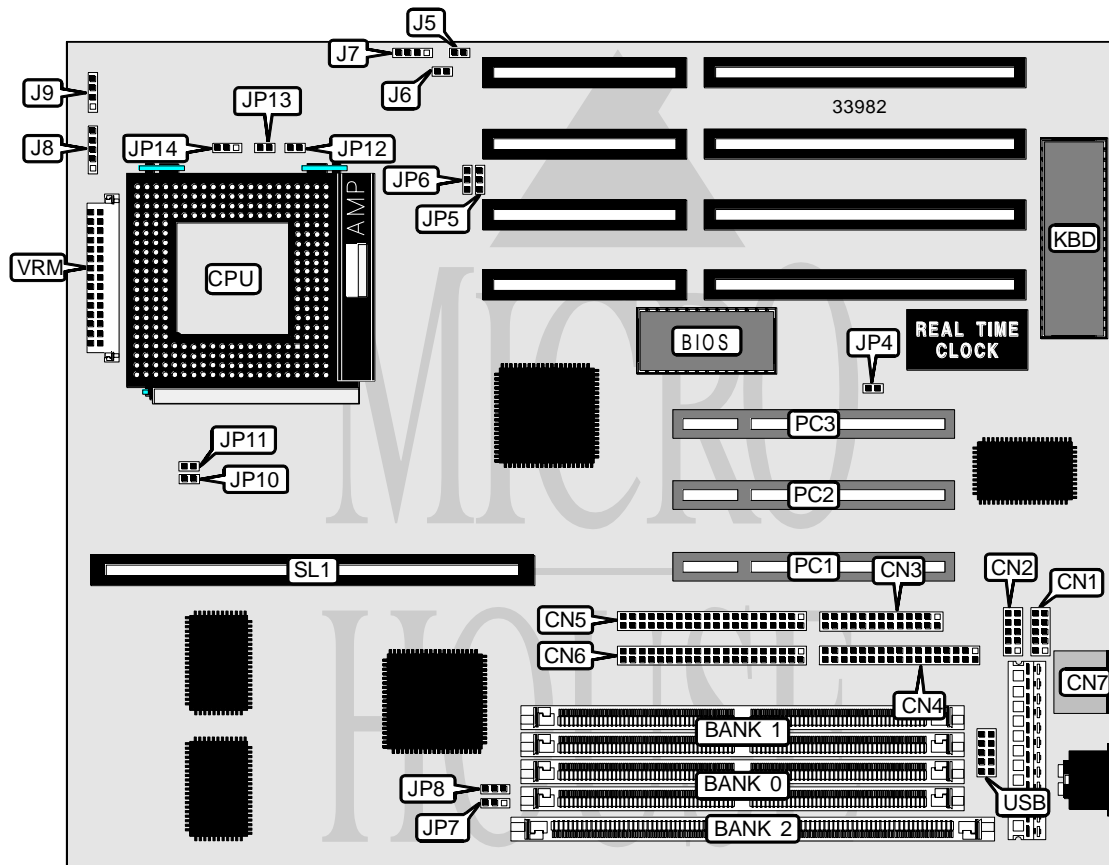


PC WARE INTERNATIONAL, INC.

MB - A R I E S

Processor	CX M1/AM K5/Pentium
Processor Speed	75/90/100/120/133/150/166/180/200MHz
Chip Set	Intel
Video Chip Set	None
Maximum Onboard Memory	128MB (EDO supported)
Maximum Video Memory	None
Cache	256/512KB
BIOS	Award
Dimensions	330mm x 218mm
I/O Options	32-bit PCI slots (3), floppy drive interface, green PC connector, IDE interfaces (2), parallel port, serial ports (2), PS/2 mouse port, cache slot, VRM connector, USB connector
NPU Options	None



Continued on next page. . .

PC WARE INTERNATIONAL, INC.

MB - A R I E S

... continued from previous page

CONNECTIONS			
Purpose	Location	Purpose	Location
Serial port 1	CN1	External battery	J7
Serial port 2	CN2	Power LED & keylock	J8
Parallel port	CN3	Speaker	J9
Floppy drive interface	CN4	Green PC connector	JP6 pins 2 & 3
IDE interface 2	CN5	32-bit PCI slots	PC1 - PC3
IDE interface 1	CN6	Cache slot	SL1
PS/2 mouse port	CN7	VRM connector	VRM
IDE interface LED	J5	USB connector	USB
Reset switch	J6		

USER CONFIGURABLE SETTINGS		
Function	Label	Position
Battery type select internal	J7	Pins 1 & 2 closed
Battery type select external	J7	Closed
CMOS memory clear	J7	Pins 3 & 4 closed
í Flash BIOS voltage select 5v or EPROM	JP4	Open
Flash BIOS voltage select 12v	JP4	Closed
í Factory configured – do not alter	JP8	Unidentified

DIMM/DRAM CONFIGURATION			
Size	Bank 0	Bank 1	Bank 2
8MB	(2) 1M x 36	None	None
8MB	None	(2) 1M x 36	None
8MB	None	None	(1) 1M x 64
16MB	(2) 2M x 36	None	None
16MB	None	(2) 2M x 36	None
16MB	None	None	(1) 2M x 64
16MB	(2) 1M x 36	(2) 1M x 36	None
16MB	None	(2) 1M x 36	(1) 1M x 64
24MB	(2) 1M x 36	(2) 2M x 36	None
24MB	None	(2) 1M x 36	(1) 2M x 64
24MB	(2) 2M x 36	(2) 1M x 36	None
24MB	None	(2) 2M x 36	(1) 1M x 64
32MB	(2) 4M x 36	None	None
32MB	None	(2) 4M x 36	None
32MB	None	None	(1) 4M x 64
32MB	(2) 2M x 36	(2) 2M x 36	None
32MB	None	(2) 2M x 36	(1) 2M x 64
40MB	(2) 1M x 36	(2) 4M x 36	None
40MB	None	(2) 1M x 36	(1) 4M x 64
40MB	(2) 4M x 36	(2) 1M x 36	None
40MB	None	(2) 4M x 36	(1) 1M x 64
48MB	(2) 2M x 36	(2) 4M x 36	None

Continued on next page. . .

PC WARE INTERNATIONAL, INC.

M B - A R I E S

... continued from previous page

DIMM/DRAM CONFIGURATION (CON'T)			
Size	Bank 0	Bank 1	Bank 2
48MB	None	(2) 2M x 36	(1) 4M x 64
48MB	(2) 4M x 36	(2) 2M x 36	None
48MB	None	(2) 4M x 36	(1) 2M x 64
64MB	(2) 8M x 36	None	None
64MB	None	(2) 8M x 36	None
64MB	None	None	(1) 8M x 64
64MB	(2) 4M x 36	(2) 4M x 36	None
64MB	None	(2) 4M x 36	(1) 4M x 64
72MB	(2) 1M x 36	(2) 8M x 36	None
72MB	None	(2) 1M x 36	(1) 8M x 64
72MB	(2) 8M x 36	(2) 1M x 36	None
72MB	None	(2) 8M x 36	(1) 1M x 64
80MB	(2) 2M x 36	(2) 8M x 36	None
80MB	None	(2) 2M x 36	(1) 8M x 64
80MB	(2) 8M x 36	(2) 2M x 36	None
80MB	None	(2) 8M x 36	(1) 2M x 64
96MB	(2) 4M x 36	(2) 8M x 36	None
96MB	None	(2) 4M x 36	(1) 8M x 64
96MB	(2) 8M x 36	(2) 4M x 36	None
96MB	None	(2) 8M x 36	(1) 4M x 64
128MB	(2) 8M x 36	(2) 8M x 36	None
128MB	None	(2) 8M x 36	(1) 8M x 64

Note: Board accepts EDO memory.

DIMM VOLTAGE CONFIGURATION	
Voltage	JP7
3.3v	Pins 2 & 3 closed
5v	Pins 1 & 2 closed

CACHE CONFIGURATION		
Size	SL1	TAG
256KB	256KB module installed	(1) 8K/16K/32K x 8
512KB	512KB module installed	(1) 16K/32K x 8

Note: The location of the TAG is unidentified.

CPU SPEED SELECTION (CYRIX)							
CPU speed	Clock speed	Multiplier	JP5	JP10	JP11	JP12	JP13
120MHz	60MHz	2x	1 & 2	Open	Closed	Closed	Open
133MHz	66MHz	2x	1 & 2	Closed	Open	Closed	Open
150MHz	60MHz	2x	1 & 2	Open	Closed	Closed	Open
166MHz	66MHz	2x	1 & 2	Closed	Open	Closed	Open

Note: Pins designated should be in the closed position.

Continued on next page. ...

PC WARE INTERNATIONAL, INC.

MB - A R I E S

... continued from previous page

CPU SPEED SELECTION (AMD)							
CPU speed	Clock speed	Multiplier	JP5	JP10	JP11	JP12	JP13
75MHz	50MHz	1.5x	2 & 3	Closed	Closed	Open	Open
90MHz	60MHz	1.5x	1 & 2	Open	Closed	Open	Open
100MHz	66MHz	1.5x	1 & 2	Closed	Open	Open	Open
Note: Pins designated should be in the closed position.							

CPU SPEED SELECTION (INTEL)							
CPU speed	Clock speed	Multiplier	JP5	JP10	JP11	JP12	JP13
75MHz	50MHz	1.5x	2 & 3	Closed	Closed	Open	Open
90MHz	60MHz	1.5x	1 & 2	Open	Closed	Open	Open
100MHz	66MHz	1.5x	1 & 2	Closed	Open	Open	Open
120MHz	60MHz	2x	1 & 2	Open	Closed	Closed	Open
133MHz	66MHz	2x	1 & 2	Closed	Open	Closed	Open
150MHz	60MHz	2.5x	1 & 2	Open	Closed	Closed	Closed
166MHz	66MHz	2.5x	1 & 2	Closed	Open	Closed	Closed
180MHz	60MHz	3x	1 & 2	Open	Closed	Open	Closed
200MHz	66MHz	3x	1 & 2	Closed	Open	Open	Closed
Note: Pins designated should be in the closed position.							

CPU VOLTAGE SELECTION	
Voltage	JP14
3.3v	Pins 2 & 3 closed
3.5v	Pins 1 & 2 closed