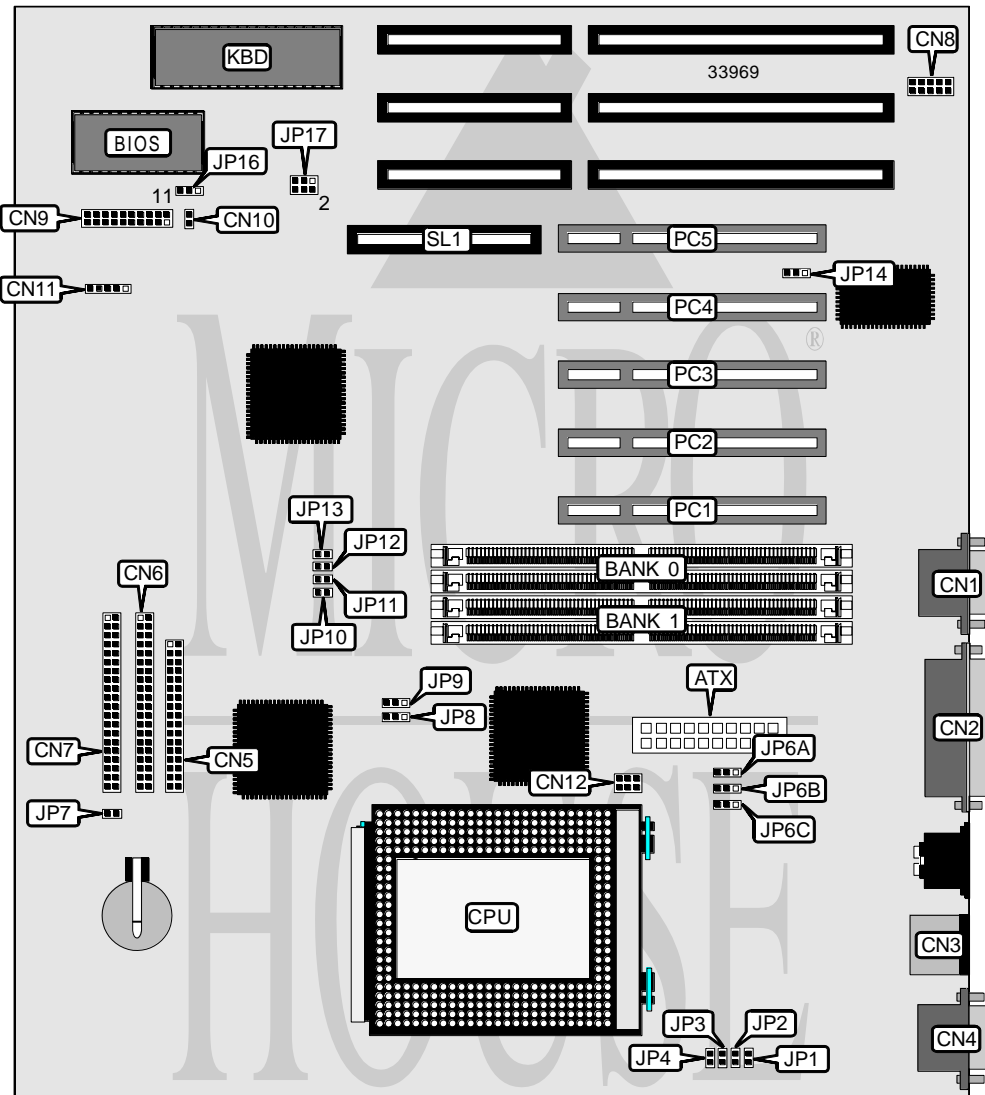


# ASUS COMPUTER INTERNATIONAL P/I-X P 6 N P 5

<b>Processor</b>	Pentium Pro
<b>Processor Speed</b>	150/166/180/200MHz
<b>Chip Set</b>	Intel
<b>Video Chip Set</b>	None
<b>Maximum Onboard Memory</b>	256MB (EDO supported)
<b>Maximum Video Memory</b>	None
<b>Cache</b>	256/512KB (located on Pentium Pro CPU)
<b>BIOS</b>	Unidentified
<b>Dimensions</b>	330mm x 218mm
<b>I/O Options</b>	32-bit PCI slots (5), floppy drive interface, green PC connector, IDE interfaces (2), parallel port, PS/2 mouse port, serial ports (2), IR connector, USB connector, ATX power connector, MediaBus slot
<b>NPU Options</b>	None



Continued on next page. . .

# ASUS COMPUTER INTERNATIONAL

## P/I - X P 6 N P 5

... continued from previous page

CONNECTIONS			
Purpose	Location	Purpose	Location
ATX power connector	ATX	Speaker	CN9 pins 7 - 10
Serial port 2	CN1	System power LED	CN9 pins 12 & 13
Parallel port	CN2	Green PC connector	CN9 pins 14 & 15
PS/2 mouse port	CN3	ATX power switch	CN9 pins 16 & 17
Serial port 1	CN4	Reset switch	CN9 pins 19 & 20
Floppy drive interface	CN5	IDE interface LED	CN10
IDE interface 2	CN6	IR connector	CN11
IDE interface 1	CN7	Chassis fan power	CN12
USB connector	CN8	32-bit PCI slots	PC1 - PC5
Power LED & keylock	CN9 pins 1 - 5	MediaBus slot	SL1

USER CONFIGURABLE SETTINGS		
Function	Label	Position
Battery test lead normal operation	JP7	Closed
Battery test lead test mode	JP7	Open
? On board I/O enabled	JP14	Pins 1 & 2 closed
On board I/O disabled	JP14	Pins 2 & 3 closed
? CMOS memory normal operation	JP16	Pins 2 & 3 closed
CMOS memory clear	JP16	Pins 1 & 2 closed
? Flash BIOS normal operation	JP17	Pins 1 & 2 closed
Flash BIOS boot block enabled	JP17	Pins 2 & 3 closed

DRAM CONFIGURATION		
Size	Bank 0	Bank 1
8MB	(2) 1M x 36	None
16MB	(2) 2M x 36	None
16MB	(2) 1M x 36	(2) 1M x 36
24MB	(2) 2M x 36	(2) 1M x 36
32MB	(2) 4M x 36	None
32MB	(2) 2M x 36	(2) 2M x 36
40MB	(2) 4M x 36	(2) 1M x 36
48MB	(2) 4M x 36	(2) 2M x 36
64MB	(2) 8M x 36	None
64MB	(2) 4M x 36	(2) 4M x 36
72MB	(2) 8M x 36	(2) 1M x 36
80MB	(2) 8M x 36	(2) 2M x 36
96MB	(2) 8M x 36	(2) 4M x 36
128MB	(2) 8M x 36	(2) 8M x 36
128MB	(2) 16M x 36	None

Continued on next page. . .

# ASUS COMPUTER INTERNATIONAL

## P/I-X P 6 N P 5

... continued from previous page

DRAM CONFIGURATION (CON'T)		
Size	Bank 0	Bank 1
136MB	(2) 16M x 36	(2) 1M x 36
144MB	(2) 16M x 36	(2) 2M x 36
160MB	(2) 16M x 36	(2) 4M x 36
192MB	(2) 16M x 36	(2) 8M x 36
256MB	(2) 16M x 36	(2) 16M x 36

Note: Board accepts EDO memory. Banks are interchangeable.

CACHE CONFIGURATION
Note: 256KB/512KB cache is located on the Pentium Pro CPU.

CPU SPEED SELECTION								
CPU speed	Clock speed	Multiplier	JP8	JP9	JP10	JP11	JP12	JP13
150MHz	60MHz	2.5x	2 & 3	1 & 2	Closed	Closed	Closed	Open
166MHz	66MHz	2.5x	1 & 2	2 & 3	Closed	Closed	Closed	Open
180MHz	60MHz	3x	2 & 3	1 & 2	Closed	Closed	Open	Closed
200MHz	66MHz	3x	1 & 2	2 & 3	Closed	Closed	Open	Closed

Note: Pins designated should be in the closed position.

CPU VOLTAGE SELECTION				
Voltage	JP1	JP2	JP3	JP4
2.1v	Open	Open	Open	Closed
2.2v	Open	Open	Closed	Open
2.3v	Open	Open	Closed	Closed
2.4v	Open	Closed	Open	Open
2.5v	Open	Closed	Open	Closed
2.6v	Open	Closed	Closed	Open
2.7v	Open	Closed	Closed	Closed
2.8v	Closed	Open	Open	Open
2.9v	Closed	Open	Open	Closed
3.0v	Closed	Open	Closed	Open
3.1v	Closed	Open	Closed	Closed
3.2v	Closed	Closed	Open	Open
3.3v	Closed	Closed	Open	Closed
3.4v	Closed	Closed	Closed	Open
3.5v	Closed	Closed	Closed	Closed

3.3V POWER SOURCE SELECTION			
Source	JP6A	JP6B	JP6C
íATX power supply	Pins 2 & 3 closed	Pins 2 & 3 closed	Pins 2 & 3 closed
Onboard regulator	Pins 1 & 2 closed	Pins 1 & 2 closed	Pins 1 & 2 closed