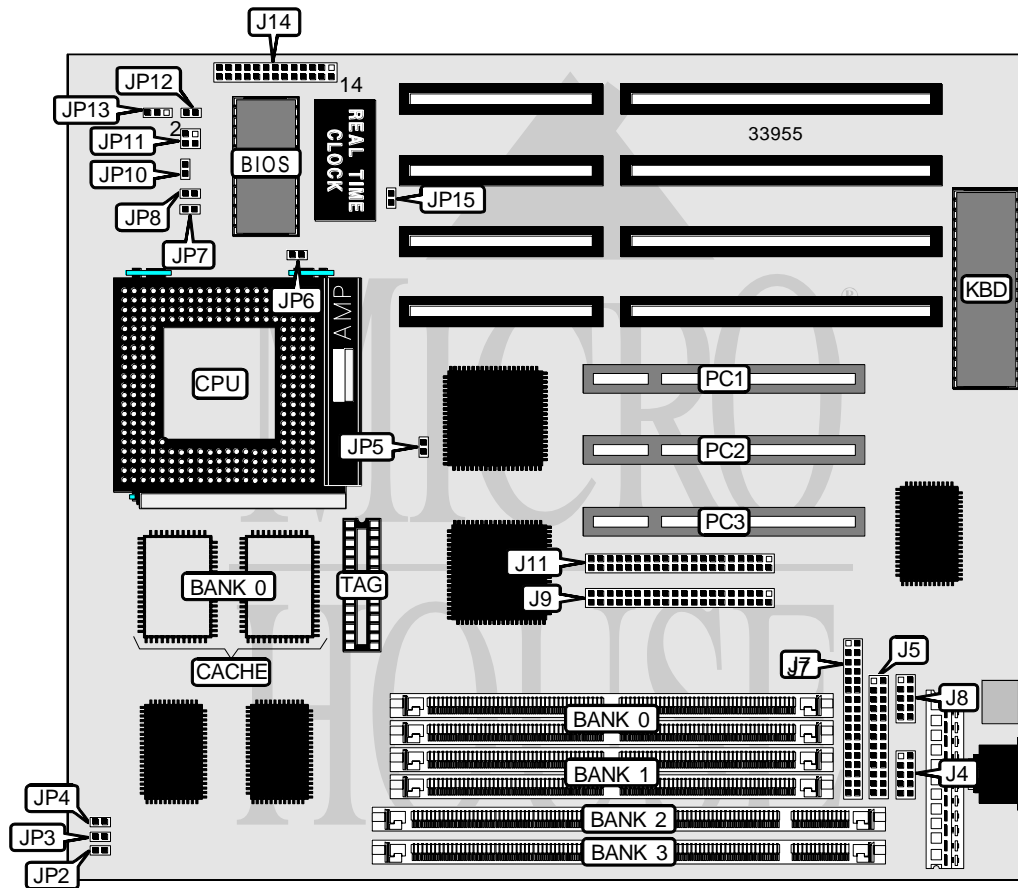


BIOSTAR MICROTECH INTERNATIONAL CORPORATION

MB-8500TV D

Processor	CX M1/AM K5/Pentium
Processor Speed	75/90/100/120/133/150/166/180/200MHz
Chip Set	Unidentified
Video Chip Set	None
Maximum Onboard Memory	128MB (EDO supported)
Maximum Video Memory	None
Cache	256/512KB
BIOS	Unidentified
Dimensions	254mm x 218mm
I/O Options	32-bit PCI slots (3), floppy drive interface, green PC connector, IDE interfaces (2), parallel port, serial ports (2)
NPU Options	None



Continued on next page. . .

BIOSTAR MICROTECH INTERNATIONAL CORPORATION

MB - 8500TV D

... continued from previous page

CONNECTIONS			
Purpose	Location	Purpose	Location
Serial port 2	J4	Power LED & keylock	J14 pins 5 - 9
Parallel port	J5	Turbo LED	J14 pins 10 & 11
Floppy drive interface	J7	Reset switch	J14 pins 12 & 13
Serial port 1	J8	Green PC connector	J14 pins 17 & 18
IDE interface 1	J9	IDE interface LED	J14 pins 20 & 21
IDE interface 2	J11	+5v ground	J14 pins 25 & 26
Speaker	J14 pins 1- 4	32-bit PCI slots	PC1 – PC3

USER CONFIGURABLE SETTINGS		
Function	Label	Position
? CMOS memory normal operation	JP6	Open
CMOS memory clear	JP6	Closed
? Battery type select internal	JP15	Closed
Battery type select external	JP15	Open

DRAM CONFIGURATION		
Size	Bank 0	Bank 1
8MB	(2) 1M x 36	None
16MB	(2) 2M x 36	None
16MB	(2) 1M x 36	(2) 1M x 36
24MB	(2) 2M x 36	(2) 1M x 36
32MB	(2) 4M x 36	None
32MB	(2) 2M x 36	(2) 2M x 36
40MB	(2) 4M x 36	(2) 1M x 36
48MB	(2) 4M x 36	(2) 2M x 36
64MB	(2) 8M x 36	None
64MB	(2) 4M x 36	(2) 4M x 36
72MB	(2) 8M x 36	(2) 1M x 36
80MB	(2) 8M x 36	(2) 2M x 36
96MB	(2) 8M x 36	(2) 4M x 36
128MB	(2) 8M x 36	(2) 8M x 36

DIMM CONFIGURATION		
Size	Bank 2	Bank 3
8MB	(1) 1M x 64	None
16MB	(1) 2M x 64	None
16MB	(1) 1M x 64	(1) 1M x 64
24MB	(1) 2M x 64	(1) 1M x 64
32MB	(1) 4M x 64	None
32MB	(1) 2M x 64	(1) 2M x 64
40MB	(1) 4M x 64	(1) 1M x 64
48MB	(1) 4M x 64	(1) 2M x 64

Continued on next page. ...

BIOSTAR MICROTECH INTERNATIONAL CORPORATION

MB-8500TV D

... continued from previous page

DIMM CONFIGURATION (CON'T)		
Size	Bank 2	Bank 3
64MB	(1) 8M x 64	None
64MB	(1) 4M x 64	(1) 4M x 64
72MB	(1) 8M x 64	(1) 1M x 64
80MB	(1) 8M x 64	(1) 2M x 64
96MB	(1) 8M x 64	(1) 4M x 64
128MB	(1) 8M x 64	(1) 8M x 64

CACHE CONFIGURATION		
Size	Bank 0	TAG
256KB	(2) 32K x 32	(1) 8K/32K x 8
512KB	(2) 64K x 32	(1) 32K x 8

CACHE JUMPER CONFIGURATION	
Size	JP5
256KB	Open
512KB	Closed

CPU SPEED SELECTION (CYRIX)							
CPU speed	Clock speed	Multiplier	JP2	JP3	JP4	JP7	JP8
120MHz	50MHz	2x	Closed	Closed	Closed	Open	Closed
133MHz	55MHz	2x	Closed	Closed	Open	Open	Closed
150MHz	60MHz	2x	Open	Closed	Closed	Open	Closed
166MHz	66MHz	2x	Closed	Open	Closed	Open	Closed

CPU SPEED SELECTION (AMD)							
CPU speed	Clock speed	Multiplier	JP2	JP3	JP4	JP7	JP8
75MHz	50MHz	1.5x	Closed	Closed	Closed	Open	Open
90MHz	60MHz	1.5x	Open	Closed	Closed	Open	Open
100MHz	66MHz	1.5x	Closed	Open	Closed	Open	Open
120MHz	60MHz	1.5x	Open	Closed	Closed	Open	Open
133MHz	66MHz	1.5x	Closed	Open	Closed	Open	Open
150MHz	60MHz	2x	Open	Closed	Closed	Open	Closed
166MHz	66MHz	2x	Closed	Open	Closed	Open	Closed

Continued on next page. . .

BIOSTAR MICROTECH INTERNATIONAL CORPORATION

MB-8500TV D

... continued from previous page

CPU SPEED SELECTION (INTEL)							
CPU speed	Clock speed	Multiplier	JP2	JP3	JP4	JP7	JP8
75MHz	50MHz	1.5x	Closed	Closed	Closed	Open	Open
90MHz	60MHz	1.5x	Open	Closed	Closed	Open	Open
100MHz	66MHz	1.5x	Closed	Open	Closed	Open	Open
120MHz	60MHz	2x	Open	Closed	Closed	Open	Closed
133MHz	66MHz	2x	Closed	Open	Closed	Open	Closed
150MHz	60MHz	2.5x	Open	Closed	Closed	Closed	Closed
166MHz	66MHz	2.5x	Closed	Open	Closed	Closed	Closed
180MHz	60MHz	3x	Open	Closed	Closed	Closed	Open
200MHz	66MHz	3x	Closed	Open	Closed	Closed	Open

CPU TYPE SELECTION				
Type	JP10	JP11	JP12	JP13
CX M1	Open	Pins 1 & 3, 2 & 4 closed	Open	Pins 1 & 2 closed
CX6X86L	Open	Open	Closed	Pins 2 & 3 closed
AM K5 (PrxxxAB/AC/AF)	Open	Pins 1 & 3, 2 & 4 closed	Closed	Pins 1 & 2 closed
P54C/CQS/CT	Open	Pins 1 & 3, 2 & 4 closed	Open	Pins 1 & 2 closed
AM K5 (PrxxxAH)	Closed	Open	Open	Pins 2 & 3 closed
AM K5 (PrxxxAJ/AK)	Closed	Open	Closed	Pins 2 & 3 closed
P55C/CT	Open	Open	Closed	Pins 2 & 3 closed