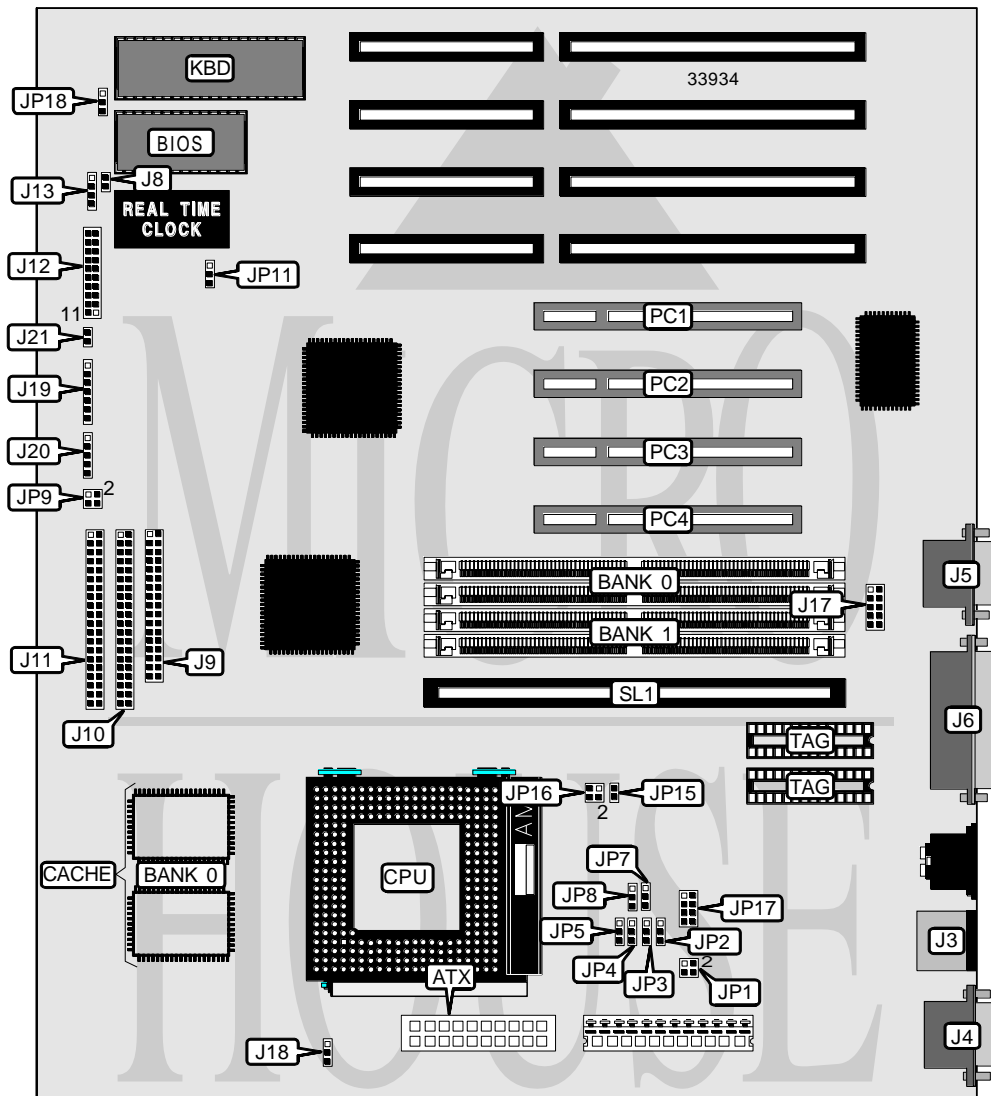


ELITEGROUP COMPUTER SYSTEMS, INC.

P5HX-A (VER. 2.0 PCB 2.1)

Processor	CX M1/Pentium
Processor Speed	75/90/100/120/133/150/166/200MHz
Chip Set	Intel
Video Chip Set	None
Maximum Onboard Memory	256MB (EDO supported)
Maximum Video Memory	None
Cache	256/512KB
BIOS	Unidentified
Dimensions	330mm x 218mm
I/O Options	32-bit PCI slots (4), floppy drive interface, green PC connector, IDE interfaces (2), parallel port, PS/2 mouse port, serial ports (2), cache slot, IR connectors (2), USB connector, ATX power connector, soft on/off power switch
NPU Options	None



Continued on next page...

ELITEGROUP COMPUTER SYSTEMS, INC.

P5HX-A (VER. 2.0 PCB 2.1)

... continued from previous page

CONNECTIONS			
Purpose	Location	Purpose	Location
ATX power connector	ATX	Power LED & keylock	J12 pins 11 - 15
PS/2 mouse port	J3	Speaker	J12 pins 17 - 20
Serial port 1	J4	IDE interface LED	J13
Serial port 2	J5	USB connector	J17
Parallel port	J6	Chassis fan power	J18
Green PC LED	J8	IR connector (fast)	J19
Floppy drive interface	J9	IR connector	J20
IDE interface 1	J10	Soft on/off power switch	J21
IDE interface 2	J11	32-bit PCI slots	PC1 - PC4
Green PC connector	J12 pins 4 & 5	Cache slot	SL1
Reset switch	J12 pins 9 & 10		

USER CONFIGURABLE SETTINGS		
Function	Label	Position
í CMOS memory normal operation	JP11	Pins 2 & 3 closed
CMOS memory clear	JP11	Pins 1 & 2 closed
í Factory configured - do not alter	JP16	Unidentified
Password disabled	JP18	Pins 1 & 2 closed
Password enabled	JP18	Pins 2 & 3 closed

DRAM CONFIGURATION		
Size	Bank 0	Bank 1
8MB	(2) 1M x 36	None
16MB	(2) 2M x 36	None
16MB	(2) 1M x 36	(2) 1M x 36
24MB	(2) 2M x 36	(2) 1M x 36
32MB	(2) 4M x 36	None
32MB	(2) 2M x 36	(2) 2M x 36
40MB	(2) 4M x 36	(2) 1M x 36
48MB	(2) 4M x 36	(2) 2M x 36
64MB	(2) 8M x 36	None
64MB	(2) 4M x 36	(2) 4M x 36
72MB	(2) 8M x 36	(2) 1M x 36
80MB	(2) 8M x 36	(2) 2M x 36
96MB	(2) 8M x 36	(2) 4M x 36
128MB	(2) 8M x 36	(2) 8M x 36
128MB	(2) 16M x 36	None
136MB	(2) 16M x 36	(2) 1M x 36
144MB	(2) 16M x 36	(2) 2M x 36
160MB	(2) 16M x 36	(2) 4M x 36
192MB	(2) 16M x 36	(2) 8M x 36
256MB	(2) 16M x 36	(2) 16M x 36

Note: Board accepts EDO memory.

Continued on next page. . .

ELITEGROUP COMPUTER SYSTEMS, INC.

P5HX-A (VER. 2.0 PCB 2.1)

... continued from previous page

CACHE CONFIGURATION		
Size	Bank 0	SL1
256KB (A)	None	256KB module installed
256KB (B)	(2) 32K x 32	Not installed
512KB (A)	None	512KB module installed
512KB (B)	(2) 32K x 32	256KB module installed
512KB (C)	(2) 64K x 32	Not installed

CACHE JUMPER CONFIGURATION	
Size	JP15
256KB (A)	Open
256KB (B)	Closed
512KB (A)	Open
512KB (B)	Closed
512KB (C)	Open

CPU SPEED SELECTION (CYRIX)					
CPU speed	Clock speed	Multiplier	JP7	JP8	JP9
120MHz	50MHz	2x	Open	2 & 3	3 & 4
133MHz	55MHz	2x	Open	2 & 3	1 & 2
150MHz	60MHz	2x	Open	2 & 3	3 & 4
166MHz	66MHz	2x	Open	2 & 3	1 & 2

Note: Pins designated should be in the closed position.

CPU SPEED SELECTION (INTEL)					
CPU speed	Clock speed	Multiplier	JP7	JP8	JP9
75MHz	50MHz	1.5x	1 & 2	1 & 2	1 & 2, 3 & 4
90MHz	60MHz	1.5x	1 & 2	1 & 2	3 & 4
100MHz	66MHz	1.5x	1 & 2	1 & 2	1 & 2
120MHz	60MHz	2x	1 & 2	2 & 3	3 & 4
133MHz	66MHz	2x	1 & 2	2 & 3	1 & 2
150MHz	60MHz	2.5x	2 & 3	2 & 3	3 & 4
166MHz	66MHz	2.5x	2 & 3	2 & 3	1 & 2
200MHz	66MHz	3x	2 & 3	1 & 2	1 & 2

Note: Pins designated should be in the closed position.

CPU VOLTAGE SELECTION (SINGLE)					
Voltage	JP1	JP2	JP3	JP4	JP5
3.3v	1 & 2	1 & 2	1 & 2	1 & 2	1 & 2
3.52v	3 & 4	1 & 2	1 & 2	1 & 2	1 & 2

Note: Pins designated should be in the closed position.

Continued on next page...

ELITEGROUP COMPUTER SYSTEMS, INC.

P5HX-A (VER. 2.0 PCB 2.1)

... continued from previous page

CPU VOLTAGE SELECTION (DUAL)							
Voltage	V core	JP1	JP2	JP3	JP4	JP5	JP17
3.3v	2.5v	1 & 2	2 & 3	2 & 3	2 & 3	2 & 3	1 & 2
3.3v	2.7v	1 & 2	2 & 3	2 & 3	2 & 3	2 & 3	3 & 4
3.3v	2.8v	1 & 2	2 & 3	2 & 3	2 & 3	2 & 3	5 & 6
3.3v	2.9v	1 & 2	2 & 3	2 & 3	2 & 3	2 & 3	7 & 8
3.52v	2.5v	3 & 4	2 & 3	2 & 3	2 & 3	2 & 3	1 & 2
3.52v	2.7v	3 & 4	2 & 3	2 & 3	2 & 3	2 & 3	3 & 4
3.52v	2.8v	3 & 4	2 & 3	2 & 3	2 & 3	2 & 3	5 & 6
3.52v	2.9v	3 & 4	2 & 3	2 & 3	2 & 3	2 & 3	7 & 8

Note: Pins designated should be in the closed position.