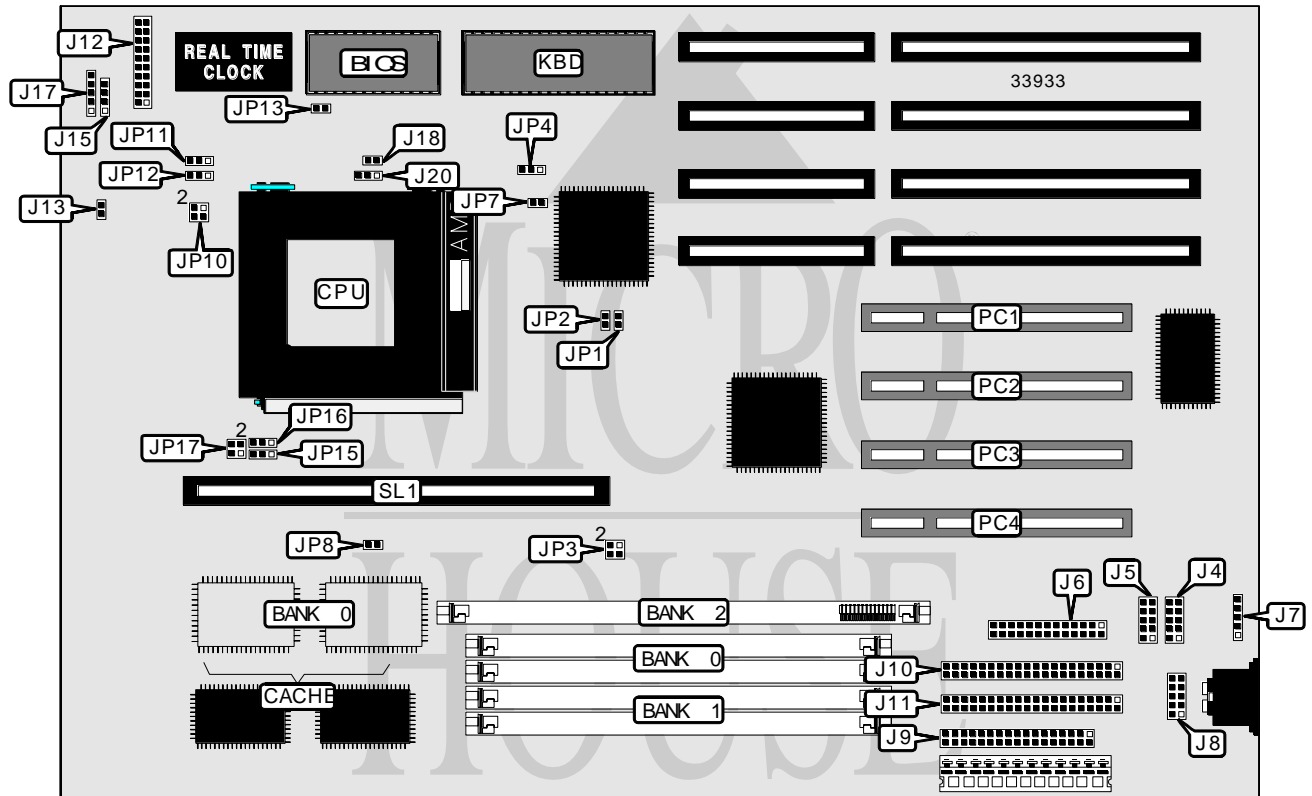


ELITEGROUP COMPUTER SYSTEMS, INC.

P5VX-B (VER. 1.1)

Processor	CX M1/Pentium
Processor Speed	75/90/100/120/133/150/166/200MHz
Chip Set	Intel
Video Chip Set	None
Maximum Onboard Memory	128MB (EDO supported)
Maximum Video Memory	None
Cache	256/512KB
BIOS	Unidentified
Dimensions	330mm x 218mm
I/O Options	32-bit PCI slots (4), floppy drive interface, green PC connector, IDE interfaces (2), parallel port, PS/2 mouse interface, serial ports (2), cache slot, IR connectors (2), USB connector
NPU Options	None



Continued on next page. . .

ELITEGROUP COMPUTER SYSTEMS, INC.

P5VX-B (VER. 1.1)

... continued from previous page

CONNECTIONS			
Purpose	Location	Purpose	Location
Serial port 1	J4	Reset switch	J12 pins 9 & 10
Serial port 2	J5	Power LED & keylock	J12 pins 11 - 15
Parallel port	J6	Speaker	J12 pins 17 - 20
PS/2 mouse interface	J7	IDE interface LED	J13
USB connector	J8	IR connector (IBM)	J15
Floppy drive interface	J9	IR connector (Intel)	J17
IDE interface 1	J10	Green PC LED	J18
IDE interface 2	J11	Chassis fan power	J20
Power on LED	J12 pins 2 & 3	32-bit PCI slots	PC1 - PC4
Green PC connector	J12 pins 4 & 5	Cache slot	SL1

USER CONFIGURABLE SETTINGS		
Function	Label	Position
í Factory configured - do not alter	JP1	Unidentified
í Factory configured - do not alter	JP2	Unidentified
í Flash BIOS voltage select 5v	JP4	Pins 2 & 3 closed
Flash BIOS voltage select 12v	JP4	Pins 1 & 2 closed
í Factory configured - do not alter	JP7	Unidentified
í CMOS memory normal operation	JP13	Open
CMOS memory clear	JP13	Closed

DIMM/DRAM CONFIGURATION			
Size	Bank 0	Bank 1	Bank 2
8MB	(2) 1M x 36	None	None
8MB	None	None	(1) 1M x 64
16MB	(2) 2M x 36	None	None
16MB	(2) 1M x 36	(2) 1M x 36	None
16MB	None	None	(1) 2M x 64
16MB	(2) 1M x 36	None	(1) 1M x 64
24MB	(2) 2M x 36	(2) 1M x 36	None
24MB	(2) 2M x 36	None	(1) 1M x 64
24MB	(2) 1M x 36	None	(1) 2M x 64
32MB	(2) 4M x 36	None	None
32MB	(2) 2M x 36	(2) 2M x 36	None
32MB	None	None	(1) 4M x 64
32MB	(2) 2M x 36	None	(1) 2M x 64
40MB	(2) 4M x 36	(2) 1M x 36	None
40MB	(2) 4M x 36	None	(1) 1M x 64
40MB	(2) 1M x 36	None	(1) 4M x 64
48MB	(2) 4M x 36	(2) 2M x 36	None
48MB	(2) 4M x 36	None	(1) 2M x 64
48MB	(2) 2M x 36	None	(1) 4M x 64

Continued on next page. ...

ELITEGROUP COMPUTER SYSTEMS, INC.

P5VX-B (VER. 1.1)

... continued from previous page

DIMM/DRAM CONFIGURATION			
Size	Bank 0	Bank 1	Bank 2
64MB	(2) 8M x 36	None	None
64MB	(2) 4M x 36	(2) 4M x 36	None
64MB	None	None	(1) 8M x 64
64MB	(2) 4M x 36	None	(1) 4M x 64
72MB	(2) 8M x 36	(2) 1M x 36	None
72MB	(2) 8M x 36	None	(1) 1M x 64
72MB	(2) 1M x 36	None	(1) 8M x 64
80MB	(2) 8M x 36	(2) 2M x 36	None
80MB	(2) 8M x 36	None	(1) 2M x 64
80MB	(2) 2M x 36	None	(1) 8M x 64
96MB	(2) 8M x 36	(2) 4M x 36	None
96MB	(2) 4M x 36	None	(1) 8M x 64
96MB	(2) 8M x 36	None	(1) 4M x 64
128MB	(2) 8M x 36	(2) 8M x 36	None
128MB	(2) 8M x 36	None	(1) 8M x 64

Note: Board accepts EDO memory.

CACHE CONFIGURATION		
Size	Bank 0	SL1
256KB (A)	(2) 32K x 32	Not installed
256KB (B)	None	256KB module installed
512KB (A)	None	512KB module installed
512KB (B)	(2) 32K x 32	256KB module installed

CACHE JUMPER CONFIGURATION	
Size	JP8
256KB (A)	Open
256KB (B)	Open
512KB (A)	Open
512KB (B)	Closed

CPU SPEED SELECTION (CYRIX)					
CPU speed	Clock speed	Multiplier	JP3	JP11	JP12
120MHz	50MHz	2x	Open	1 & 2	2 & 3
133MHz	55MHz	2x	1 & 2, 3 & 4	1 & 2	2 & 3
150MHz	60MHz	2x	1 & 2	1 & 2	2 & 3
166MHz	66MHz	2x	3 & 4	1 & 2	2 & 3

Note: Pins designated should be in the closed position.

Continued on next page. . .

ELITEGROUP COMPUTER SYSTEMS, INC.
P5VX-B (VER. 1.1)

... continued from previous page

CPU SPEED SELECTION (INTEL)					
CPU speed	Clock speed	Multiplier	JP3	JP11	JP12
75MHz	50MHz	1.5x	Open	1 & 2	1 & 2
90MHz	60MHz	1.5x	1 & 2	1 & 2	1 & 2
100MHz	66MHz	1.5x	3 & 4	1 & 2	1 & 2
120MHz	60MHz	2x	1 & 2	1 & 2	2 & 3
133MHz	66MHz	2x	3 & 4	1 & 2	2 & 3
150MHz	60MHz	2.5x	1 & 2	2 & 3	2 & 3
166MHz	66MHz	2.5x	3 & 4	2 & 3	2 & 3
200MHz	66MHz	3x	3 & 4	2 & 3	1 & 2

Note: Pins designated should be in the closed position.

CPU VOLTAGE SELECTION (SINGLE)			
Voltage	JP10	JP15	JP16
3.3v	Pins 1 & 2 closed	Pins 1 & 2 closed	Pins 1 & 2 closed
3.525v	Pins 3 & 4 closed	Pins 1 & 2 closed	Pins 1 & 2 closed

CPU VOLTAGE SELECTION (DUAL)					
Voltage	V core	JP10	JP15	JP16	JP17
3.3v	2.5v	1 & 2	2 & 3	2 & 3	1 & 2
3.3v	2.8v	1 & 2	2 & 3	2 & 3	1 & 2
3.525v	2.5v	3 & 4	2 & 3	2 & 3	3 & 4
3.525v	2.8v	3 & 4	2 & 3	2 & 3	3 & 4

Note: Pins designated should be in the closed position.