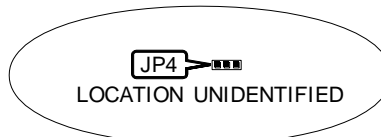
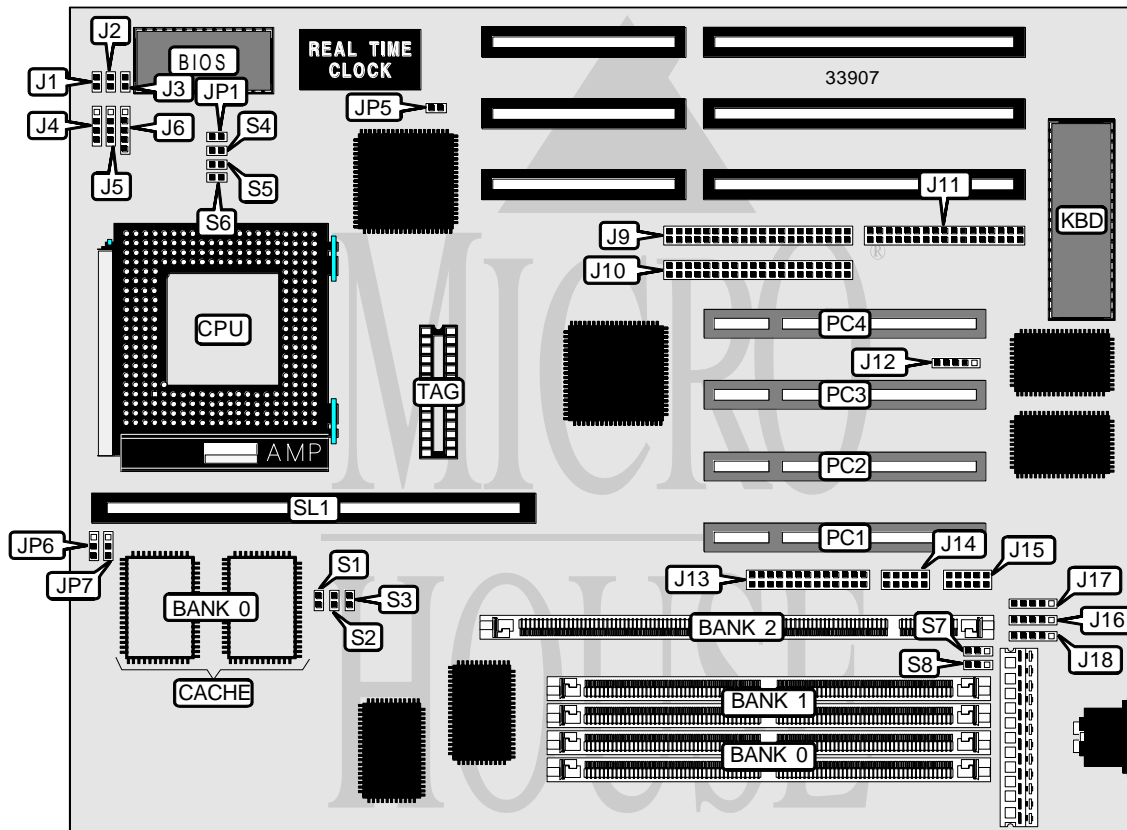


GEMLIGHT COMPUTER, LTD. GMB-P56IPS (VER. 1.06)

Processor	CX M1/AM K5/Pentium
Processor Speed	75/90/100/120/133/150/166/200MHz
Chip Set	Intel
Video Chip Set	None
Maximum Onboard Memory	128MB (EDO supported)
Maximum Video Memory	None
Cache	256/512KB
BIOS	AMI/Award
Dimensions	270mm x 220mm
I/O Options	32-bit PCI slots (4), floppy drive interface, green PC connector, IDE interfaces (2), parallel port, PS/2 mouse interface, serial ports (2), cache slot, IR connector, USB connectors (2)
NPU Options	None



Continued on next page. . .

GEMLIGHT COMPUTER, LTD.

GMB-P56IPS (VER. 1.06)

... continued from previous page

CONNECTIONS			
Purpose	Location	Purpose	Location
Reset switch	J1	IR connector	J12
Green PC connector	J2	Parallel port	J13
Green PC LED	J3	Serial port 2	J14
Speaker	J4	Serial port 1	J15
IDE interface LED	J5	USB connector 1 (optional)	J16
Power LED & keylock	J6	USB connector 2 (optional)	J17
IDE interface 1	J9	PS/2 mouse interface	J18
IDE interface 2	J10	Cache slot	SL1
Floppy drive interface	J11	32-bit PCI slots	PC1 - PC4

USER CONFIGURABLE SETTINGS		
Function	Label	Position
Flash BIOS voltage select 12v	JP4	Pins 1 & 2 closed
Flash BIOS voltage select 5v	JP4	Pins 2 & 3 closed
í CMOS memory normal operation	JP5	Open
CMOS memory clear	JP5	Closed

DIMM/DRAM CONFIGURATION			
Size	Bank 0	Bank 1	Bank 2
8MB	None	None	(1) 1M x 64
8MB	(2) 1M x 32	None	None
16MB	(2) 1M x 32	(2) 1M x 32	None
16MB	(2) 2M x 32	None	None
16MB	None	None	(1) 2M x 64
24MB	(2) 2M x 32	(2) 1M x 32	None
24MB	None	(2) 1M x 32	(1) 2M x 64
32MB	None	(2) 4M x 32	None
32MB	None	None	(1) 4M x 64
32MB	(2) 2M x 32	(2) 2M x 32	None
32MB	None	(2) 2M x 32	(1) 2M x 64
40MB	(2) 4M x 32	(2) 1M x 32	None
40MB	None	(2) 1M x 32	(1) 4M x 64
40MB	None	(1) 4M x 64	(1) 1M x 64
48MB	(2) 2M x 32	(2) 4M x 32	None
48MB	None	(2) 2M x 32	(1) 4M x 64
48MB	None	(2) 4M x 32	(1) 2M x 64
64MB	(2) 8M x 32	None	None
64MB	None	None	(1) 8M x 64
64MB	None	(2) 4M x 32	(1) 4M x 64
72MB	(2) 8M x 32	(2) 1M x 32	None
72MB	None	(2) 1M x 32	(1) 8M x 64
72MB	None	(2) 8M x 32	(1) 1M x 64

Continued on next page. ...

GEMLIGHT COMPUTER, LTD.

GMB-P561PS (VER. 1.06)

... continued from previous page

DIMM/DRAM CONFIGURATION (CON'T)			
Size	Bank 0	Bank 1	Bank 2
80MB	(2) 8M x 32	(2) 2M x 32	None
80MB	None	(2) 8M x 32	(1) 2M x 64
80MB	None	(2) 2M x 32	(1) 8M x 64
96MB	(2) 8M x 32	(2) 4M x 32	None
96MB	None	(2) 8M x 32	(1) 4M x 64
96MB	None	(2) 4M x 32	(1) 8M x 64
128MB	(2) 4M x 32	(2) 4M x 32	None

Note: Board accepts EDO memory.

DRAM VOLTAGE CONFIGURATION		
Voltage	S7	S8
3.3v	Pins 2 & 3 closed	Pins 2 & 3 closed
5v	Pins 1 & 2 closed	Pins 1 & 2 closed

CACHE CONFIGURATION			
Size	Bank 0	SL1	TAG
256KB	(2) 32K x 32	Not installed	(1) 8K/16K/32K x 8
512KB	(2) 32K x 32	256KB module installed	(1) 8K/16K/32K x 8

CPU SPEED SELECTION (CYRIX)							
CPU speed	Clock speed	Multiplier	JP6	JP7	S1	S2	S3
120MHz	50MHz	2x	1 & 2	2 & 3	Closed	Closed	Open
133MHz	55MHz	2x	1 & 2	2 & 3	Open	Closed	Open
150MHz	60MHz	2x	1 & 2	2 & 3	Closed	Open	Open
166MHz	66MHz	2x	1 & 2	2 & 3	Open	Open	Open
200MHz	66MHz	3x	2 & 3	1 & 2	Open	Open	Closed

Note: Pins designated should be in the closed position.

CPU SPEED SELECTION (AMD)							
CPU speed	Clock speed	Multiplier	JP6	JP7	S1	S2	S3
75MHz	50MHz	1.5x	1 & 2	1 & 2	Closed	Closed	Open
90MHz	60MHz	1.5x	1 & 2	1 & 2	Closed	Open	Open
100MHz	66MHz	1.5x	1 & 2	1 & 2	Open	Open	Open
120MHz	60MHz	1.5x	1 & 2	1 & 2	Closed	Open	Open
150MHz	66MHz	1.5x	1 & 2	1 & 2	Open	Open	Open
166MHz	66MHz	2.5x	2 & 3	2 & 3	Open	Open	Open

Note: Pins designated should be in the closed position.

Continued on next page. . .

GEMLIGHT COMPUTER, LTD.

GMB-P56IPS (VER. 1.06)

... continued from previous page

CPU SPEED SELECTION (INTEL)							
CPU speed	Clock speed	Multiplier	JP6	JP7	S1	S2	S3
75MHz	50MHz	1.5x	1 & 2	1 & 2	Closed	Closed	Open
90MHz	60MHz	1.5x	1 & 2	1 & 2	Closed	Open	Open
100MHz	66MHz	1.5x	1 & 2	1 & 2	Open	Open	Open
120MHz	60MHz	2x	1 & 2	2 & 3	Closed	Open	Open
133MHz	66MHz	2x	1 & 2	2 & 3	Open	Open	Open
150MHz	60MHz	2.5x	2 & 3	2 & 3	Closed	Open	Open
166MHz	66MHz	2.5x	2 & 3	2 & 3	Open	Open	Open
200MHz	66MHz	3x	2 & 3	1 & 2	Open	Open	Open

Note: Pins designated should be in the closed position.

CPU VOLTAGE SELECTION					
Voltage	V core	JP1	S4	S5	S6
3.4v (single)	N/A	Closed	Closed	Closed	Closed
3.4v (dual)	2.8v	Closed	Open	Open	Open
3.5v (single)	N/A	Open	Closed	Closed	Closed