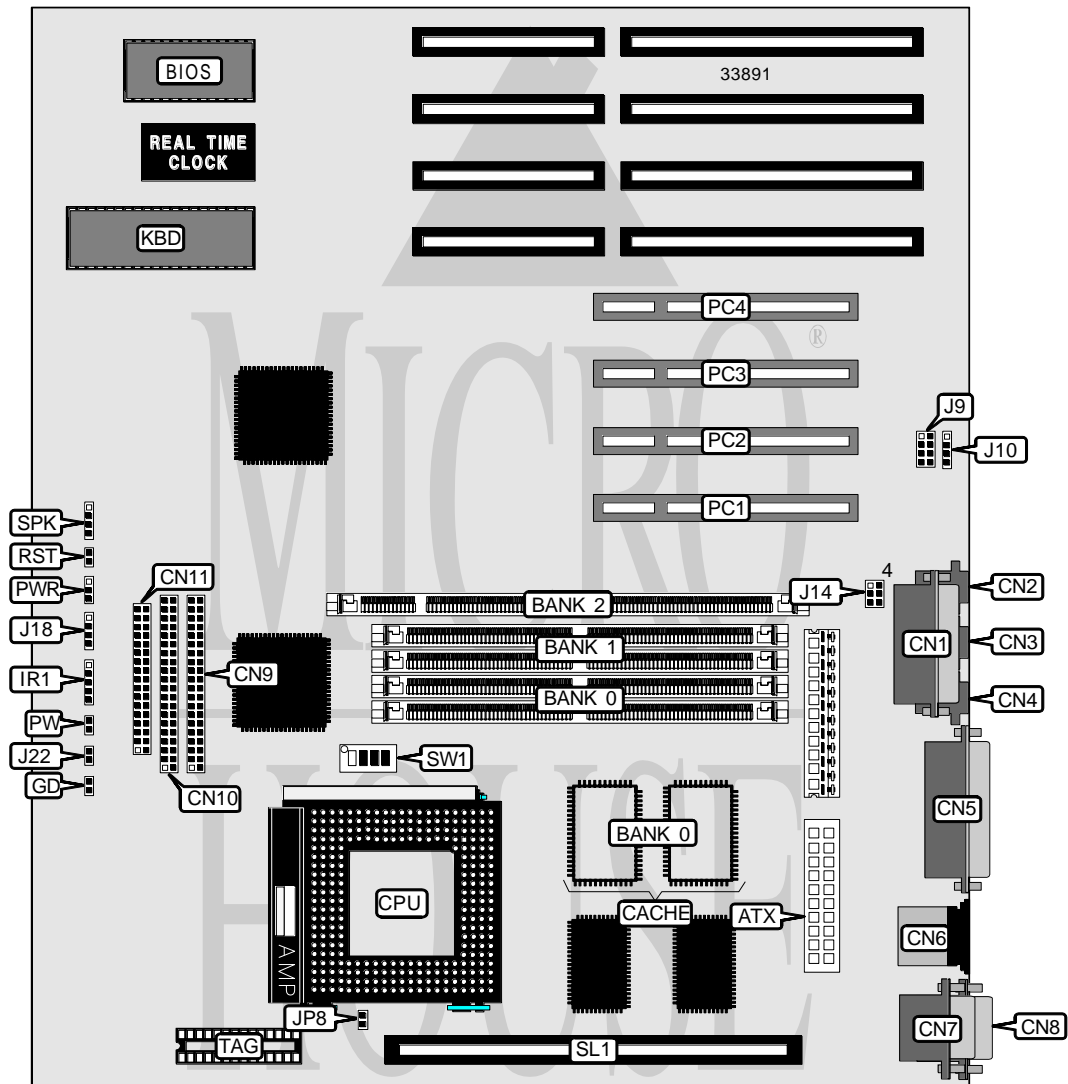


FAMOUS TECHNOLOGY CO., LTD.

M P - 5 8 6 V A S

Processor	CX M1/AM K5/Pentium
Processor Speed	75/90/100/120/125/133/150/166/180/200MHz
Chip Set	Intel
Video Chip Set	None
Maximum Onboard Memory	128MB (EDO supported)
Maximum Video Memory	None
Cache	256/512KB
BIOS	Award
Dimensions	330mm x 218mm
I/O Options	32-bit PCI slots (4), floppy drive interface, game port, green PC connector, IDE interfaces (2), parallel port, PS/2 mouse port, serial ports (2), cache slot, IR connector, ATX power connector, line in connector, line out connector, microphone connector, wavetable connector, soft off power supply, CD-ROM connector
NPU Options	None



FAMOUS TECHNOLOGY CO., LTD.

MP-586VAS

... continued from previous page

CONNECTIONS			
Purpose	Location	Purpose	Location
ATX power connector	ATX	IR connector	IR1
Game port	CN1	Wavetable connector	J9
Microphone connector	CN2	CD-ROM connector	J10
Line in connector	CN3	IDE interface LED	J18
Line out connector	CN4	Green PC connector	J22
Parallel port	CN5	Chassis fan power	JP8
PS/2 mouse port	CN6	32-bit PCI slots	PC1 - PC4
Serial port	CN7	Soft off power supply	PW
Serial port	CN8	Power LED & keylock	PWR
IDE interface 1	CN9	Reset switch	RST
IDE interface 2	CN10	Cache slot	SL1
Floppy drive interface	CN11	Speaker	SPK
Green PC LED	GD		

USER CONFIGURABLE SETTINGS		
Function	Label	Position
Speaker type select line out	J14	Pins 1 & 2, 4 & 5 closed
Speaker type select speaker out	J14	Pins 2 & 3, 5 & 6 closed

DRAM/DIMM CONFIGURATION			
Size	Bank 0	Bank 1	Bank 2
8MB	(2) 1M x 36	None	None
8MB	None	None	(1) 1M x 64
16MB	(2) 2M x 36	None	None
16MB	(2) 1M x 36	(2) 1M x 36	None
16MB	None	None	(1) 2M x 64
18MB	(2) 2M x 36	(2) 256K x 36	None
24MB	(2) 2M x 36	(2) 1M x 36	None
32MB	(2) 4M x 36	None	None
32MB	(2) 2M x 36	(2) 2M x 36	None
32MB	None	None	(1) 4M x 64
40MB	(2) 4M x 36	(2) 1M x 36	None
48MB	(2) 4M x 36	(2) 2M x 36	None
64MB	(2) 8M x 36	None	None
64MB	(2) 4M x 36	(2) 4M x 36	None
64MB	None	None	(1) 8M x 64
72MB	(2) 8M x 36	(2) 1M x 36	None
80MB	(2) 8M x 36	(2) 2M x 36	None
96MB	(2) 8M x 36	(2) 4M x 36	None
128MB	(2) 8M x 36	(2) 8M x 36	None

Note: Board accepts EDO memory.

Continued on next page...

FAMOUS TECHNOLOGY CO., LTD.
MP - 5 8 6 V A S

... continued from previous page

CACHE CONFIGURATION			
Size	Bank 0	SL1	TAG
256KB	(2) 32K x 32	Not installed	Unidentified
512KB	(2) 32K x 32	256KB module installed	Unidentified

CPU SPEED SELECTION (CYRIX)						
CPU speed	Clock speed	Multiplier	SW1/1	SW1/2	SW1/3	SW1/4
120MHz	50MHz	2x	On	Off	On	On
133MHz	55MHz	2x	On	Off	Off	Off
150MHz	60MHz	2x	On	Off	Off	On
166MHz	55MHz	2x	On	Off	Off	Off

CPU SPEED SELECTION (AMD)						
CPU speed	Clock speed	Multiplier	SW1/1	SW1/2	SW1/3	SW1/4
75MHz	50MHz	1.5x	Off	Off	On	On
90MHz	60MHz	1.5x	Off	Off	Off	On
100MHz	66MHz	1.5x	Off	Off	On	Off
100MHz	50MHz	1.5x	Off	Off	On	On
120MHz	60MHz	1.5x	Off	Off	Off	On
133MHz	66MHz	1.5x	Off	Off	On	Off
150MHz	60MHz	2x	On	Off	Off	On
166MHz	66MHz	2x	On	Off	On	Off

CPU SPEED SELECTION (INTEL)						
CPU speed	Clock speed	Multiplier	SW1/1	SW1/2	SW1/3	SW1/4
75MHz	50MHz	1.5x	Off	Off	On	On
90MHz	60MHz	1.5x	Off	Off	Off	On
100MHz	66MHz	1.5x	Off	Off	On	Off
120MHz	60MHz	2x	On	Off	Off	On
125MHz	50MHz	2.5x	On	On	On	On
133MHz	66MHz	2x	On	Off	On	Off
150MHz	60MHz	2.5x	On	On	Off	On
166MHz	66MHz	2.5x	On	On	On	Off
180MHz	60MHz	3x	Off	On	Off	On
200MHz	66MHz	3x	Off	On	On	Off