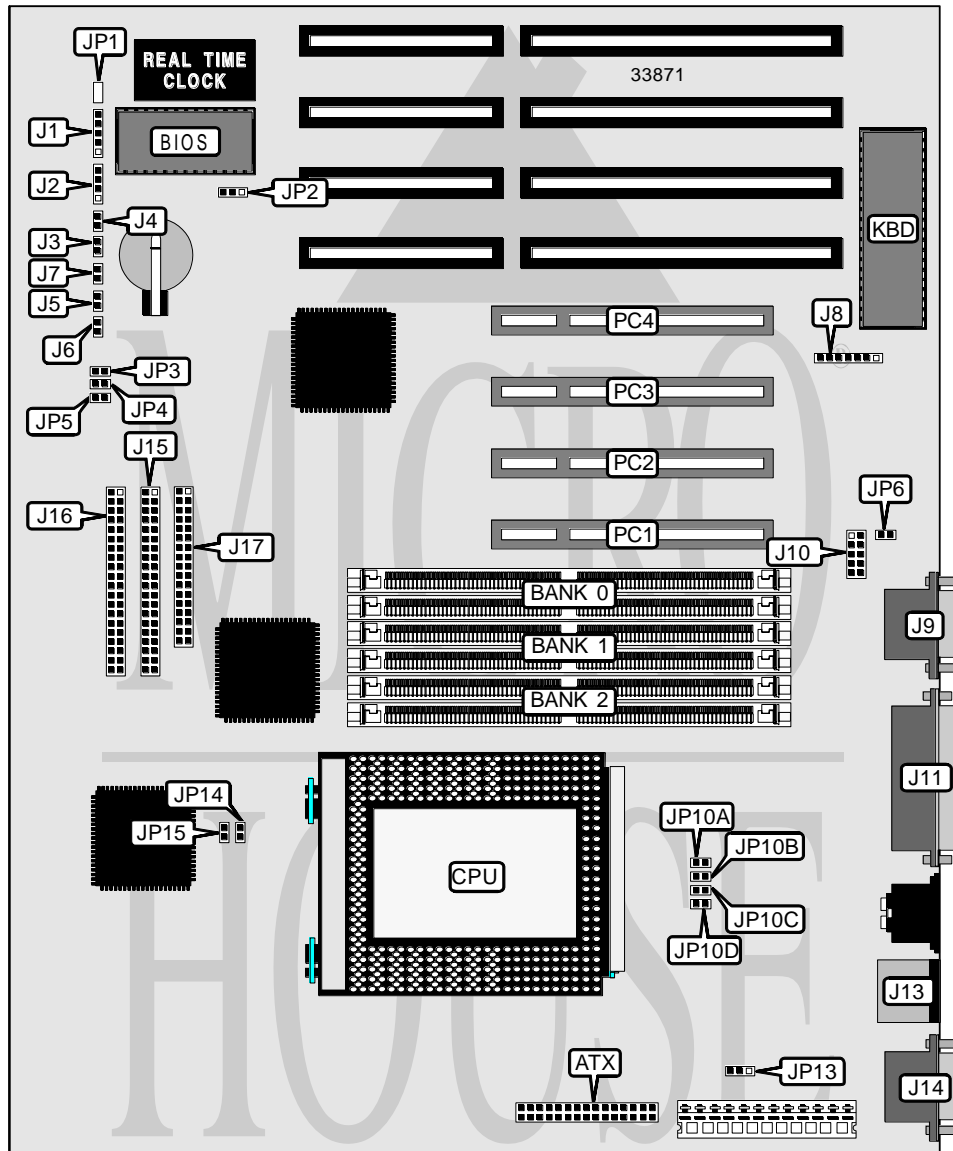


WIN LAN ENTERPRISE CO., LTD.

EL - E P 0 9

Processor	Pentium Pro
Processor Speed	133/150/166/180/200/233MHz
Chip Set	Intel
Video Chip Set	None
Maximum Onboard Memory	768MB (EDO supported)
Maximum Video Memory	None
Cache	256/512KB (located on Pentium Pro CPU)
BIOS	Award
Dimensions	330mm x 218mm
I/O Options	32-bit PCI slots (4), floppy drive interface, green PC connector, IDE interfaces (2), parallel port, PS/2 mouse port, serial ports (2), IR connector, USB connector, ATX power connector
NPU Options	None



WIN LAN ENTERPRISE CO., LTD.

EL - E P 0 9

... continued from previous page

CONNECTIONS			
Purpose	Location	Purpose	Location
ATX power connector	ATX	USB connector	J10
Power LED & keylock	J1	Parallel port	J11
Speaker	J2	PS/2 mouse port	J13
Reset switch	J3	Serial port 1	J14
Turbo LED	J4	IDE interface 1	J15
IDE interface LED	J5	IDE interface 2	J16
Green PC connector	J6	Floppy drive interface	J17
Green PC LED	J7	Power on connector	JP1
IR connector	J8	Chassis fan power	JP13
Serial port 2	J9	32-bit PCI slots	PC1 - PC4

USER CONFIGURABLE SETTINGS		
Function	Label	Position
í Flash BIOS voltage select 5v	JP2	Pins 2 & 3 closed
Flash BIOS voltage select 12v	JP2	Pins 1 & 2 closed
í Onboard SMC chip enabled	JP6	Open
Onboard SMC chip disabled	JP6	Closed

DRAM CONFIGURATION			
Size	Bank 0	Bank 1	Bank 2
8MB	(2) 1M x 36	None	None
16MB	(2) 1M x 36	(2) 1M x 36	None
16MB	(2) 2M x 36	None	None
24MB	(2) 1M x 36	(2) 1M x 36	(2) 1M x 36
24MB	(2) 1M x 36	(2) 2M x 36	None
32MB	(2) 1M x 36	(2) 1M x 36	(2) 2M x 36
32MB	(2) 2M x 36	(2) 2M x 36	None
32MB	(2) 4M x 36	None	None
40MB	(2) 1M x 36	(2) 2M x 36	(2) 2M x 36
40MB	(2) 1M x 36	(2) 4M x 36	None
48MB	(2) 2M x 36	(2) 2M x 36	(2) 2M x 36
48MB	(2) 2M x 36	(2) 4M x 36	None
56MB	(2) 1M x 36	(2) 2M x 36	(2) 4M x 36
64MB	(2) 4M x 36	(2) 4M x 36	None
64MB	(2) 8M x 36	None	None
72MB	(2) 1M x 36	(2) 4M x 36	(2) 4M x 36
72MB	(2) 1M x 36	(2) 8M x 36	None
80MB	(2) 2M x 36	(2) 4M x 36	(2) 4M x 36
80MB	(2) 2M x 36	(2) 8M x 36	None
96MB	(2) 4M x 36	(2) 4M x 36	(2) 4M x 36
96MB	(2) 4M x 36	(2) 8M x 36	None
104MB	(2) 1M x 36	(2) 4M x 36	(2) 8M x 36
112MB	(2) 2M x 36	(2) 4M x 36	(2) 8M x 36

Continued on next page. . .

WIN LAN ENTERPRISE CO., LTD.
EL - EP09

... continued from previous page

DRAM CONFIGURATION (CON'T)			
Size	Bank 0	Bank 1	Bank 2
128MB	(2) 8M x 36	(2) 8M x 36	None
136MB	(2) 1M x 36	(2) 8M x 36	(2) 8M x 36
136MB	(2) 1M x 36	(2) 16M x 36	None
144MB	(2) 2M x 36	(2) 8M x 36	(2) 8M x 36
160MB	(2) 4M x 36	(2) 8M x 36	(2) 8M x 36
192MB	(2) 8M x 36	(2) 8M x 36	(2) 8M x 36
192MB	(2) 8M x 36	(2) 16M x 36	None
256MB	(2) 16M x 36	(2) 16M x 36	None
320MB	(2) 8M x 36	(2) 16M x 36	(2) 16M x 36
384MB	(2) 16M x 36	(2) 16M x 36	(2) 16M x 36
768MB	(2) 32M x 36	(2) 32M x 36	(2) 32M x 36

Note: Board accepts EDO memory. Board also accepts x 32 SIMMs.

CACHE CONFIGURATION
Note: 256KB/512KB cache is located on the Pentium Pro CPU.

CPU SPEED SELECTION							
CPU speed	Clock speed	Multiplier	JP3	JP4	JP5	JP14	JP15
133MHz	66MHz	2x	Closed	Closed	Closed	Open	Closed
150MHz	50MHz	3x	Closed	Closed	Open	Closed	Closed
166MHz	66MHz	2.5x	Open	Closed	Closed	Open	Closed
180MHz	60MHz	3x	Closed	Closed	Open	Closed	Open
200MHz	66MHz	3x	Closed	Closed	Open	Open	Closed
233MHz	66MHz	3.5x	Open	Closed	Open	Open	Closed

CPU VOLTAGE SELECTION				
Voltage	JP10A	JP10B	JP10C	JP10D
íAuto	Open	Open	Open	Open
2.1v	Open	Open	Open	Closed
2.2v	Open	Open	Closed	Open
2.3v	Open	Open	Closed	Closed
2.4v	Open	Closed	Open	Open
2.5v	Open	Closed	Open	Closed
2.6v	Open	Closed	Closed	Open
2.7v	Open	Closed	Closed	Closed
2.8v	Closed	Open	Open	Open
2.9v	Closed	Open	Open	Closed
3.0v	Closed	Open	Closed	Open
3.1v	Closed	Open	Closed	Closed
3.2v	Closed	Closed	Open	Open
3.3v	Closed	Closed	Open	Closed
3.4v	Closed	Closed	Closed	Open
3.5v	Closed	Closed	Closed	Closed