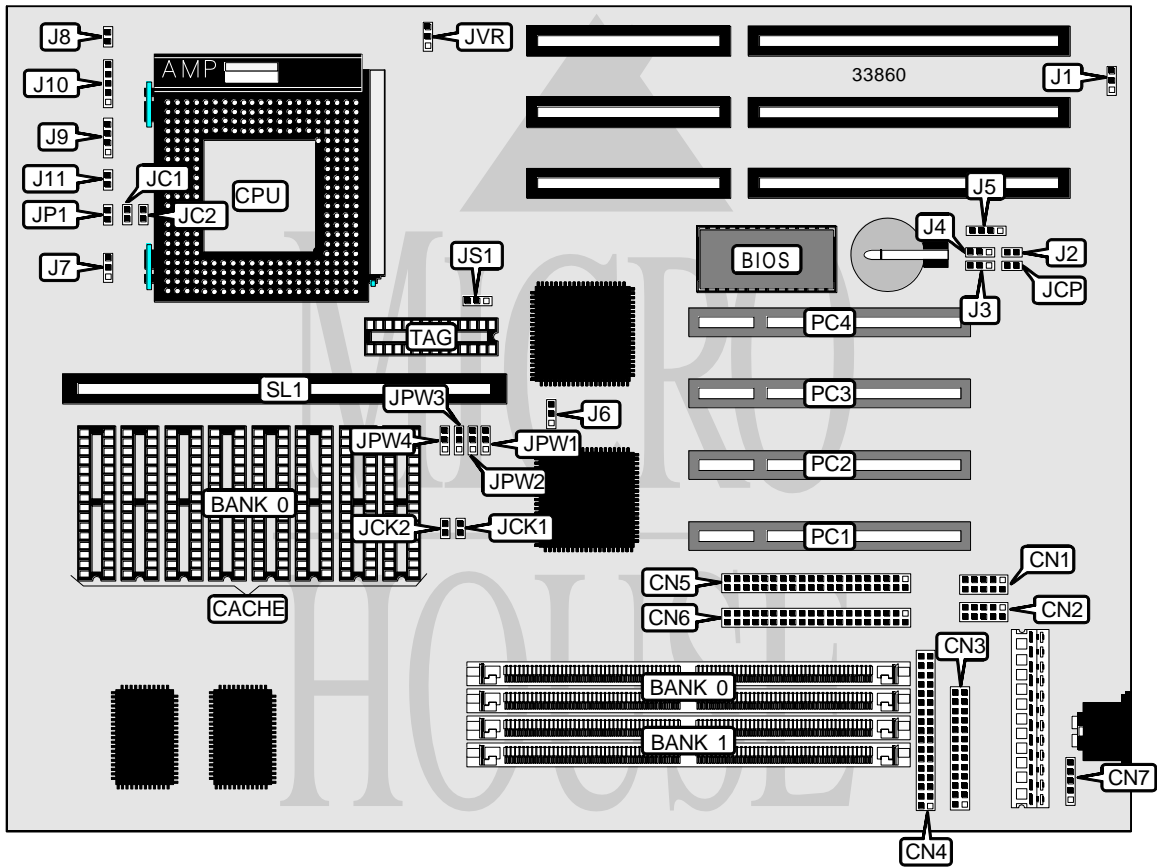


AMERICAN MEGATRENDS, INC. APOLLO II

Processor	Pentium
Processor Speed	75/90/100/120/133/150/166/180/200MHz
Chip Set	Unidentified
Video Chip Set	None
Maximum Onboard Memory	128MB (EDO supported)
Maximum Video Memory	None
Cache	256/512KB
BIOS	AMI
Dimensions	330mm x 218mm
I/O Options	32-bit PCI slots (4), floppy drive interface, green PC connector, IDE interfaces (2), parallel port, PS/2 mouse interface, serial ports (2), cache slot, remote power on connector
NPU Options	None



Continued on next page. . .

AMERICAN MEGATRENDS, INC.

APOLLO II

... continued from previous page

CONNECTIONS			
Purpose	Location	Purpose	Location
Serial port 1	CN1	Chassis fan power	J7
Serial port 2	CN2	Green PC connector	J8
Parallel port	CN3	Speaker	J9
Floppy drive interface	CN4	Power LED & keylock	J10
IDE interface 1	CN5	Reset switch	J11
IDE interface 2	CN6	IDE interface LED	JP1
PS/2 mouse interface	CN7	32-bit PCI slots	PC1 - PC4
Remote power on connector	J1	Cache slot	SL1
External battery	J5		

USER CONFIGURABLE SETTINGS		
Function	Label	Position
í Factory configured - do not alter	J2	Unidentified
í Factory configured - do not alter	J3	Unidentified
í Factory configured - do not alter	J4	Unidentified
í CMOS memory normal operation	JCP	Open
CMOS memory clear	JCP	Closed

DRAM CONFIGURATION		
Size	Bank 0	Bank 1
8MB	(2) 1M x 36	None
16MB	(2) 2M x 36	None
24MB	(2) 2M x 36	(2) 1M x 36
32MB	(2) 4M x 36	None
32MB	(2) 2M x 36	(2) 2M x 36
40MB	(2) 4M x 36	(2) 1M x 36
48MB	(2) 4M x 36	(2) 2M x 36
64MB	(2) 8M x 36	None
64MB	(2) 4M x 36	(2) 4M x 36
72MB	(2) 8M x 36	(2) 1M x 36
80MB	(2) 8M x 36	(2) 2M x 36
96MB	(2) 8M x 36	(2) 4M x 36
128MB	(2) 8M x 36	(2) 8M x 36

Note: Board accepts EDO memory.

CACHE CONFIGURATION			
Size	Bank 0	SL1	TAG
256KB (A)	(8) 32K x 8	Not installed	(1) 8K/32K x 8
256KB (B)	None	256KB module installed	None
512KB (A)	(8) 64K x 8	Not installed	(1) 32K x 8
512KB (B)	None	512KB module installed	None

Continued on next page. . .

AMERICAN MEGATRENDS, INC.

APOLLO II

... continued from previous page

CACHE JUMPER CONFIGURATION	
Size	JS1
256KB (A)	Pins 1 & 2 closed
512KB (A)	Pins 2 & 3 closed

CACHE VOLTAGE CONFIGURATION				
Voltage	JPW1	JPW2	JPW3	JPW4
í Mixed	Pins 1 & 2 closed	Pins 1 & 2 closed	Pins 1 & 2 closed	Pins 1 & 2 closed
3.3v	Pins 2 & 3 closed	Pins 2 & 3 closed	Pins 2 & 3 closed	Pins 2 & 3 closed

CPU SPEED SELECTION							
CPU speed	Clock speed	Multiplier	J6	JC1	JC2	JCK1	JCK2
75MHz	50MHz	1.5x	1 & 2	Open	Open	Closed	Closed
90MHz	60MHz	1.5x	2 & 3	Open	Open	Closed	Open
100MHz	66MHz	1.5x	2 & 3	Open	Open	Open	Closed
120MHz	60MHz	2x	2 & 3	Closed	Open	Closed	Open
133MHz	66MHz	2x	2 & 3	Closed	Open	Open	Closed
150MHz	60MHz	2.5x	2 & 3	Closed	Closed	Closed	Open
166MHz	66MHz	2.5x	2 & 3	Closed	Closed	Open	Closed
180MHz	60MHz	3x	2 & 3	Open	Closed	Closed	Open
200MHz	66MHz	3x	2 & 3	Open	Closed	Open	Closed

Note: Pins designated should be in the closed position.

CPU VOLTAGE SELECTION	
Voltage	JVR
3.38v (STD/VR)	Pins 2 & 3 closed
3.5v (VRE)	Pins 1 & 2 closed