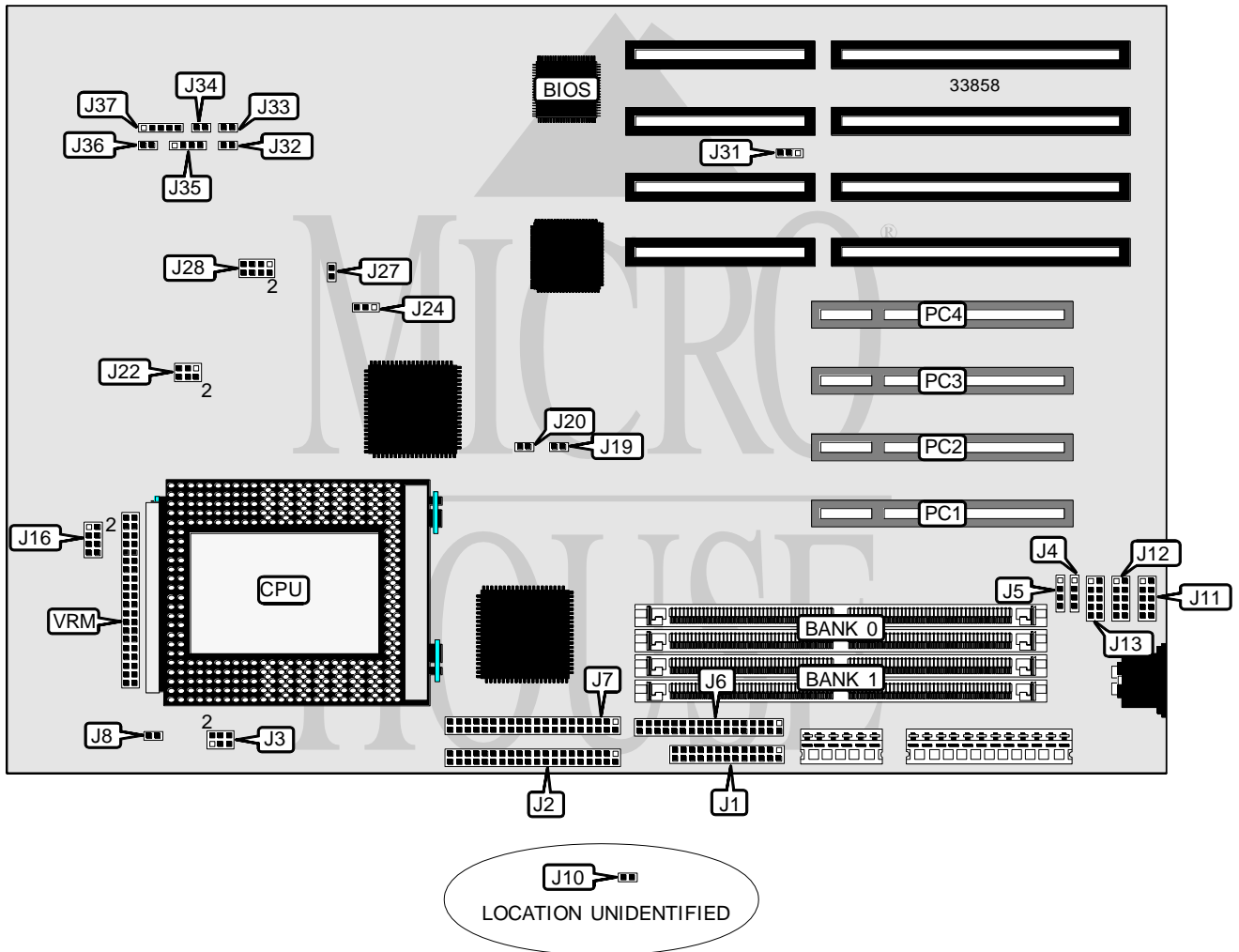


AMERICAN MEGATRENDS, INC. MERLIN PCI

Processor	Pentium Pro
Processor Speed	150/166/180/200MHz
Chip Set	Natoma
Video Chip Set	None
Maximum Onboard Memory	512MB (EDO supported)
Maximum Video Memory	None
Cache	256/512KB (located on Pentium Pro CPU)
BIOS	AMI
Dimensions	330mm x 218mm
I/O Options	32-bit PCI slots (4), floppy drive interface, green PC connector, IDE interfaces (2), parallel port, PS/2 mouse interface, serial ports (2), VRM connector, USB connectors (2), VRM connector
NPU Options	None



Continued on next page. . .

AMERICAN MEGATRENDS, INC.

MERLIN PCI

... continued from previous page

CONNECTIONS			
Purpose	Location	Purpose	Location
Parallel port	J1	Serial port 2	J12
IDE interface 1	J2	Serial port 1	J13
USB connector 2	J4	Reset switch	J32
USB connector 1	J5	Turbo switch	J34
Floppy drive interface	J6	Speaker	J35
IDE interface 2	J7	IDE interface LED	J36
Chassis fan power	J8	Power LED & keylock	J37
Green PC connector	J10	32-bit PCI slots	PC1 - PC4
PS/2 mouse interface	J11	VRM connector	VRM

USER CONFIGURABLE SETTINGS		
Function	Label	Position
í Factory configured - do not alter	J24	Unidentified
í Factory configured - do not alter	J27	Unidentified
PS/2 mouse IRQ12 enabled	J31	Pins 1 & 2 closed
PS/2 mouse IRQ12 disabled	J31	Pins 2 & 3 closed
í Factory configured - do not alter	J33	Unidentified

DRAM CONFIGURATION		
Size	Bank 0	Bank 1
8MB	(2) 1M x 36	None
16MB	(2) 2M x 36	None
16MB	(2) 1M x 36	(2) 1M x 36
24MB	(2) 2M x 36	(2) 1M x 36
32MB	(2) 4M x 36	None
32MB	(2) 2M x 36	(2) 2M x 36
40MB	(2) 4M x 36	(2) 1M x 36
48MB	(2) 2M x 36	(2) 4M x 36
64MB	(2) 8M x 36	None
64MB	(2) 4M x 36	(2) 4M x 36
72MB	(2) 8M x 36	(2) 1M x 36
80MB	(2) 2M x 36	(2) 8M x 36
96MB	(2) 8M x 36	(2) 4M x 36
128MB	(2) 16M x 36	None
128MB	(2) 8M x 36	(2) 8M x 36
136MB	(2) 16M x 36	(2) 1M x 36
144MB	(2) 16M x 36	(2) 2M x 36
160MB	(2) 16M x 36	(2) 4M x 36
192MB	(2) 16M x 36	(2) 8M x 36
256MB	(2) 32M x 36	None
256MB	(2) 16M x 36	(2) 16M x 36

Continued on next page. . .

AMERICAN MEGATRENDS, INC.

MERLIN PCI

... continued from previous page

DRAM CONFIGURATION (CON'T)		
Size	Bank 0	Bank 1
264MB	(2) 32M x 36	(2) 1M x 36
272MB	(2) 32M x 36	(2) 2M x 36
288MB	(2) 32M x 36	(2) 4M x 36
320MB	(2) 32M x 36	(2) 8M x 36
384MB	(2) 32M x 36	(2) 16M x 36
512MB	(2) 32M x 36	(2) 32M x 36

Note: Board accepts EDO memory. Board also accepts x 32 SIMMs. Banks are interchangeable.

CACHE CONFIGURATION
Note: 256KB/512KB cache is located on the Pentium Pro CPU.

CPU SPEED SELECTION					
CPU speed	Clock speed	Multiplier	J19	J20	J28
150MHz	60MHz	2.5x	Open	Closed	3 & 4, 5 & 6, 7 & 8
166MHz	66MHz	2.5x	Closed	Open	3 & 4, 5 & 6, 7 & 8
180MHz	60MHz	3x	Open	Closed	1 & 2, 5 & 6, 7 & 8
200MHz	66MHz	3x	Closed	Open	1 & 2, 5 & 6, 7 & 8

Note: Pins designated should be in the closed position.

CPU VOLTAGE SELECTION	
Voltage	J16
None	Open
2.1v	Pins 7 & 8 closed
2.2v	Pins 5 & 6 closed
2.3v	Pins 5 & 6, 7 & 8 closed
2.4v	Pins 3 & 4 closed
2.5v	Pins 3 & 4, 5 & 6 closed
2.6v	Pins 3 & 4, 5 & 6 closed
2.7v	Pins 3 & 4, 5 & 6, 7 & 8 closed
2.8v	Pins 1 & 2 closed
2.9v	Pins 1 & 2, 7 & 8 closed
3.0v	Pins 1 & 2, 5 & 6 closed
3.1v	Pins 1 & 2, 5 & 6, 7 & 8 closed
3.2v	Pins 1 & 2, 3 & 4 closed
3.3v	Pins 1 & 2, 3 & 4, 7 & 8 closed
3.4v	Pins 1 & 2, 3 & 4, 5 & 6 closed
3.5v	Pins 1 & 2, 3 & 4, 5 & 6, 7 & 8 closed

VOLTAGE SELECTION		
Setting	J3	J22
From regulator	Open	Pins 1 & 2, 3 & 4, 5 & 6 closed
From 3.3v power supply	Pins 1 & 2, 3 & 4, 5 & 6 closed	Open