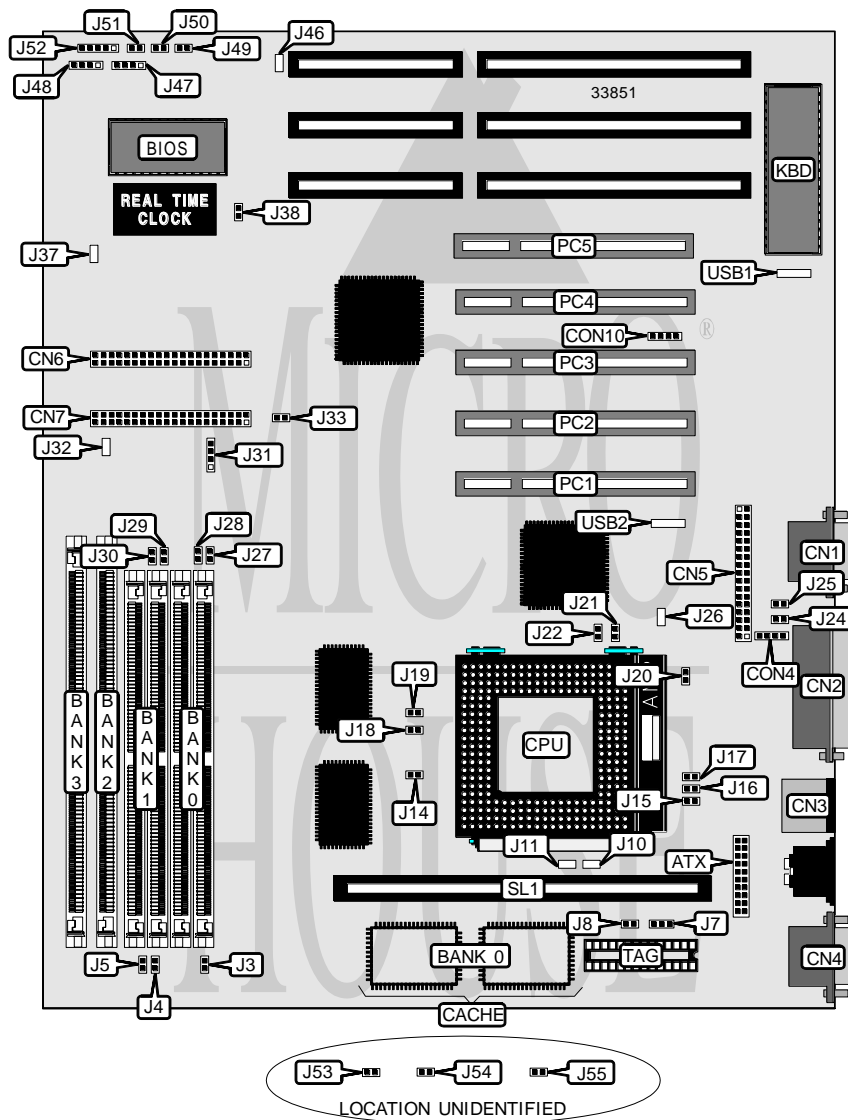


# TYAN COMPUTER CORPORATION

## S 1 4 7 2

<b>Processor</b>	CX M1/SGS/IBM/Pentium
<b>Processor Speed</b>	75/90/100/120/133/150/166/200MHz
<b>Chip Set</b>	Intel
<b>Video Chip Set</b>	None
<b>Maximum Onboard Memory</b>	128MB (EDO supported)
<b>Maximum Video Memory</b>	None
<b>Cache</b>	256/512KB
<b>BIOS</b>	AMI/Award
<b>Dimensions</b>	330mm x 218mm
<b>I/O Options</b>	32-bit PCI slots (5), floppy drive interface, IDE interfaces (2), parallel port, PS/2 mouse port, serial ports (2), cache slot, IR connectors (2), USB connectors (2), ATX power connector
<b>NPU Options</b>	None



Continued on next page...

# TYAN COMPUTER CORPORATION

## S 1 4 7 2

... continued from previous page

CONNECTIONS			
Purpose	Location	Purpose	Location
ATX power connector	ATX	IDE interface LED	J47
Serial port 1	CN1	Speaker	J48
Parallel port	CN2	Reset switch	J49
PS/2 mouse port	CN3	Turbo switch	J50
Serial port 2	CN4	Turbo LED	J51
Floppy drive interface	CN5	Power LED & keylock	J52
IDE interface 2	CN6	32-bit PCI slots	PC1 - PC5
IDE interface 1	CN7	Cache slot	SL1
IR connector	CON4	USB connector 1	USB1
IR connector	CON10	USB connector 2	USB2

USER CONFIGURABLE SETTINGS		
Function	Label	Position
í Factory configured - do not alter	J10	Unidentified
í Factory configured - do not alter	J11	Unidentified
ATX power on	J20	Open
ATX power off	J20	Closed
í Factory configured - do not alter	J26	Unidentified
í Factory configured - do not alter	J32	Unidentified
í Factory configured - do not alter	J37	Unidentified
í CMOS memory normal operation	J38	Open
CMOS memory clear	J38	Closed
í Factory configured - do not alter	J46	Pins 1 & 2 closed

DRAM CONFIGURATION				
Size	Bank 0	Bank 1	Bank 2	Bank 3
8MB	(2) 1M x 32	None	None	None
8MB	None	None	(1) 1M x 64	None
16MB	None	None	(1) 2M x 64	None
16MB	(2) 2M x 32	None	None	None
16MB	(2) 1M x 32	(2) 1M x 32	None	None
32MB	(2) 2M x 32	(2) 2M x 32	None	None
32MB	(2) 4M x 32	None	None	None
32MB	None	None	(1) 4M x 64	None
64MB	(2) 8M x 32	None	None	None
64MB	(2) 4M x 32	(2) 4M x 32	None	None
64MB	(2) 4M x 32	None	None	(1) 4M x 64
64MB	None	None	(1) 4M x 64	(1) 4M x 64
96MB	(2) 8M x 32	(2) 4M x 32	None	None
96MB	(2) 8M x 32	None	None	(1) 4M x 64
128MB	(2) 8M x 32	(2) 8M x 32	None	None

Note: Board accepts EDO memory.

Continued on next page. ...

# TYAN COMPUTER CORPORATION

## S 1 4 7 2

... continued from previous page

DRAM VOLTAGE CONFIGURATION							
Voltage	J3	J4	J5	J27	J28	J29	J30
3.3v	Closed	Closed	Closed	Open	Open	Open	Open
5v	Open	Open	Open	Closed	Closed	Closed	Closed

CACHE CONFIGURATION			
Size	Bank 0	SL1	TAG
256KB	(2) 32K x 32	Not installed	Unidentified
512KB	(2) 32K x 32	256KB module installed	Unidentified

CACHE JUMPER CONFIGURATION	
Size	J7
256KB	Pins 2 & 3 closed
512KB	Pins 1 & 2 closed

CACHE TAG CONFIGURATION	
Setting	J8
TAG enabled	Closed
TAG disabled	Open

Note: Jumper only used if COAST module is installed.

CPU SPEED SELECTION (CYRIX/SGS/IBM)					
CPU speed	Clock speed	Multiplier	J21	J22	J31
120MHz	50MHz	2x	Closed	Open	1 & 2, 3 & 4
150MHz	60MHz	2x	Closed	Open	3 & 4
166MHz	66MHz	2x	Closed	Open	1 & 2

Note: Pins designated should be in the closed position.

CPU SPEED SELECTION (INTEL)					
CPU speed	Clock speed	Multiplier	J21	J22	J31
75MHz	50MHz	1.5x	Open	Open	1 & 2, 3 & 4
90MHz	60MHz	1.5x	Open	Open	3 & 4
100MHz	66MHz	1.5x	Open	Open	1 & 2
120MHz	60MHz	2x	Closed	Open	3 & 4
133MHz	66MHz	2x	Closed	Open	1 & 2
150MHz	60MHz	2.5x	Closed	Closed	3 & 4
166MHz	66MHz	2.5x	Closed	Closed	1 & 2
200MHz	66MHz	3x	Open	Closed	1 & 2

Note: Pins designated should be in the closed position.

Continued on next page...

# TYAN COMPUTER CORPORATION

## S 1 4 7 2

... continued from previous page

CPU VOLTAGE SELECTION (P55C ONLY)								
Voltage	J14	J15	J16	J17	J18	J19	J54	J55
2.6v	Open	Open	Closed	Open	Open	Open	Closed	Closed
2.8v	Open	Open	Open	Closed	Open	Open	Closed	Closed
3v	Open	Closed	Open	Open	Open	Open	Closed	Closed

POWER SUPPLY SELECTION					
Setting	J14	J15	J16	J17	J18
í ATX	Closed	Open	Open	Open	Closed
AT	Closed	Open	Open	Open	Closed

POWER SUPPLY SELECTION (CON'T)					
Setting	J19	J33	J53	J54	J55
í ATX	Closed	Open	Open	Open	Open
AT	Closed	Closed	Closed	Open	Closed

SERIAL PORT SELECTION		
Setting	J24	J25
Used as serial port	Pins 1 & 2 closed	Pins 1 & 2 closed
Used as IR connector	Pins 2 & 3 closed	Pins 2 & 3 closed