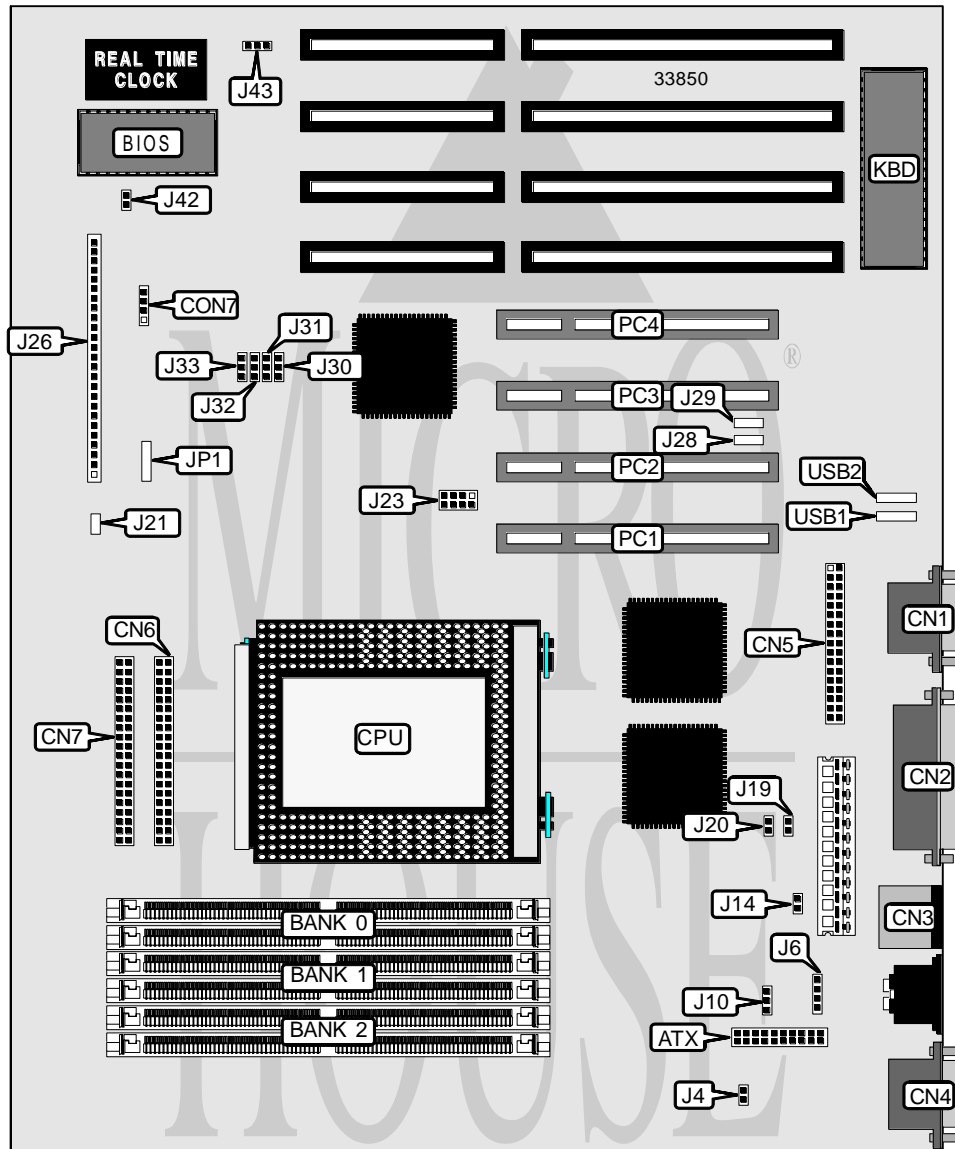


TYAN COMPUTER CORPORATION

S 1 6 7 2

Processor	Pentium Pro
Processor Speed	150/166/180/200MHz
Chip Set	Intel
Video Chip Set	None
Maximum Onboard Memory	768MB (EDO supported)
Maximum Video Memory	None
Cache	256/512KB (located on Pentium Pro CPU)
BIOS	AMI/Award
Dimensions	330mm x 218mm
I/O Options	32-bit PCI slots (4), floppy drive interface, IDE interfaces (2), parallel port, PS/2 mouse port, serial ports (2), IR connector, USB connectors (2), ATX power connector, soft on power supply
NPU Options	None



TYAN COMPUTER CORPORATION

S 1 6 7 2

... continued from previous page

CONNECTIONS			
Purpose	Location	Purpose	Location
ATX power connector	ATX	Soft on power supply	J26 pins 1 & 2
Serial port 1	CN1	IR connector	J26 pins 6 - 11
Parallel port	CN2	IDE interface LED	J26 pins 15 & 16
PS/2 mouse port	CN3	Power LED	J26 pins 18 & 20
Serial port 2	CN4	Reset switch	J26 pins 22 & 23
Floppy drive interface	CN5	Speaker	J26 pins 24 - 27
IDE interface 1	CN6	Keylock	JP1
IDE interface 2	CN7	32-bit PCI slots	PC1 - PC4
IR connector	CON7	USB connector	USB1
Chassis fan power	J14	USB connector	USB2

USER CONFIGURABLE SETTINGS		
Function	Label	Position
í Power supply select ATX	J4	Open
Power supply select AT	J4	Closed
SMC I/O chip type select 665IR	J10	Pins 1 & 2 closed
SMC I/O chip type select 669IR	J10	Pins 2 & 3 closed
í Factory configured - do not alter	J21	Unidentified
í Factory configured - do not alter	J28	Unidentified
í Factory configured - do not alter	J29	Unidentified
í CMOS memory normal operation	J42	Open
CMOS memory clear	J42	Closed
í Flash BIOS voltage select 5v	J43	Pins 1 & 2 closed
Flash BIOS voltage select 12v	J43	Pins 2 & 3 closed

DRAM CONFIGURATION			
Size	Bank 0	Bank 1	Bank 2
8MB	(2) 1M x 32	None	None
16MB	(2) 2M x 32	None	None
16MB	(2) 1M x 32	(2) 1M x 32	None
32MB	(2) 4M x 32	None	None
32MB	(2) 2M x 32	(2) 2M x 32	None
64MB	(2) 8M x 32	None	None
64MB	(2) 4M x 32	(2) 4M x 32	None
128MB	(2) 8M x 32	(2) 8M x 32	None
128MB	(2) 16M x 32	None	None
192MB	(2) 8M x 32	(2) 8M x 32	(2) 8M x 32
256MB	(2) 16M x 32	(2) 16M x 32	None
256MB	(2) 32M x 32	None	None
384MB	(2) 16M x 32	(2) 16M x 32	(2) 16M x 32
512MB	(2) 32M x 32	(2) 32M x 32	None
768MB	(2) 32M x 32	(2) 32M x 32	(2) 32M x 32

Note: Board accepts EDO memory.

Continued on next page. . .

TYAN COMPUTER CORPORATION

S 1 6 7 2

... continued from previous page

CACHE CONFIGURATION

Note: 256KB/512KB cache is located on the Pentium Pro CPU.

CPU SPEED SELECTION

Speed	J6	J19	J20	J30	J31	J32	J33
150MHz	3 & 4	Closed	Open	Closed	Closed	Closed	Open
166MHz	1 & 2	Open	Closed	Closed	Closed	Closed	Open
180MHz	3 & 4	Closed	Open	Closed	Closed	Open	Closed
200MHz	1 & 2	Open	Closed	Closed	Closed	Open	Closed

CPU VOLTAGE SELECTION

Voltage	J23
í Auto select	Open
2.1v	1 & 5
2.2v	2 & 6
2.3v	1 & 5, 2 & 6
2.4v	3 & 7
2.5v	1 & 5, 3 & 7
2.6v	2 & 6, 3 & 7
2.7v	1 & 5, 2 & 6, 3 & 7
2.8v	4 & 8
2.9v	1 & 5, 4 & 8
3.0v	2 & 6, 4 & 8
3.1v	1 & 5, 2 & 6, 4 & 8
3.2v	3 & 7, 4 & 8
3.3v	1 & 5, 3 & 7, 4 & 8
3.4v	2 & 6, 3 & 7, 4 & 8
3.5v	1 & 5, 2 & 6, 3 & 7, 4 & 8

Note: Pins designated should be in the closed position.