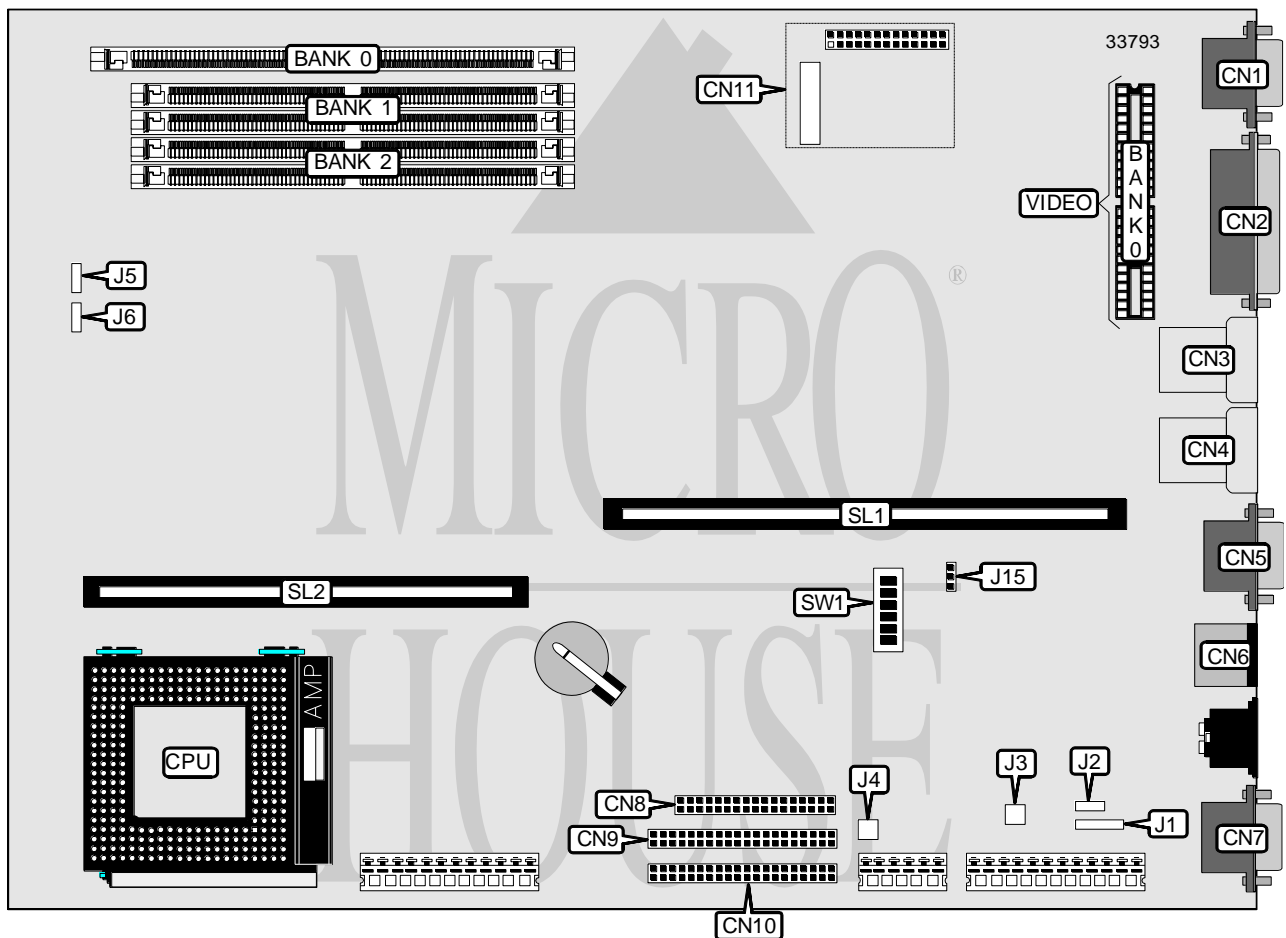


IBM CORPORATION

PC 330/350 SERIES (TYPE 6577, 6587)

Processor	Pentium
Processor Speed	75/90/100/120/133/150/166/200MHz
Chip Set	Unidentified
Video Chip Set	Unidentified
Maximum Onboard Memory	128MB (EDO supported)
Maximum Video Memory	Unidentified
Cache	256/512KB
BIOS	Unidentified
Dimensions	330mm x 218mm
I/O Options	Floppy drive interface, IDE interfaces (2), parallel port, PS/2 mouse port, serial ports (2), VESA pass through connector, VGA port, riser slot, cache slot, IR connector, USB connectors (2), modem ring connectors (2), LAN wake up connector, on/off switch connector
NPU Options	None



Continued on next page...

IBM CORPORATION

PC 330/350 SERIES (TYPE 6577, 6587)

... continued from previous page

CONNECTIONS			
Purpose	Location	Purpose	Location
VGA port	CN1	VESA pass through connector	CN11
Parallel port	CN2	Modem ring connector	J1
USB connector	CN3	LAN wake up connector	J2
USB connector	CN4	Modem ring connector	J3
Serial port 1	CN5	On/off switch connector	J4
PS/2 mouse port	CN6	IDE interface LED	J5
IR connector	CN7	Power LED	J6
Floppy drive interface	CN8	Riser slot	SL1
IDE interface 1	CN9	Cache slot	SL2
IDE interface 2	CN10		

USER CONFIGURABLE SETTINGS		
Function	Label	Position
í Password enabled	J15	Pins 2 & 3 closed
Password disabled	J15	Pins 1 & 2 closed
í Factory configured - do not alter	SW1/5	Unidentified
í Floppy drive write protect disabled	SW1/6	Off
Floppy drive write protect enabled	SW1/6	On

DRAM CONFIGURATION		
Size	Bank 1	Bank 2
8MB	(2) 1M x 36	None
16MB	(2) 2M x 36	None
16MB	(2) 1M x 36	(2) 1M x 36
24MB	(2) 2M x 36	(2) 1M x 36
32MB	(2) 4M x 36	None
32MB	(2) 2M x 36	(2) 2M x 36
40MB	(2) 4M x 36	(2) 1M x 36
48MB	(2) 4M x 36	(2) 2M x 36
64MB	(2) 8M x 36	None
64MB	(2) 4M x 36	(2) 4M x 36
72MB	(2) 8M x 36	(2) 1M x 36
80MB	(2) 8M x 36	(2) 2M x 36
96MB	(2) 8M x 36	(2) 4M x 36
128MB	(2) 8M x 36	(2) 8M x 36

Note: Board accepts EDO memory. Board also accepts x 32 SIMMs.

Continued on next page...

IBM CORPORATION

PC 330/350 SERIES (TYPE 6577, 6587)

... continued from previous page

DIMM CONFIGURATION	
Size	Bank 0
8MB	(1) 1M x 64
16MB	(1) 2M x 64
32MB	(1) 4M x 64
64MB	(1) 8M x 64
Note: Board accepts EDO memory.	

CACHE CONFIGURATION	
Size	SL1
256KB	256KB module installed
512KB	512KB module installed

VIDEO MEMORY CONFIGURATION
Note: The size of the video memory is unidentified.

CPU SPEED SELECTION						
CPU speed	Clock speed	Multiplier	SW1/1	SW1/2	SW1/3	SW1/4
75MHz	50MHz	1.5x	Off	Off	On	On
90MHz	60MHz	1.5x	Off	Off	On	Off
100MHz	66MHz	1.5x	Off	Off	Off	On
120MHz	60MHz	2x	On	Off	On	Off
133MHz	66MHz	2x	On	Off	Off	On
150MHz	60MHz	2.5x	On	On	On	Off
166MHz	66MHz	2.5x	On	On	Off	On
200MHz	66MHz	3x	Off	On	Off	On