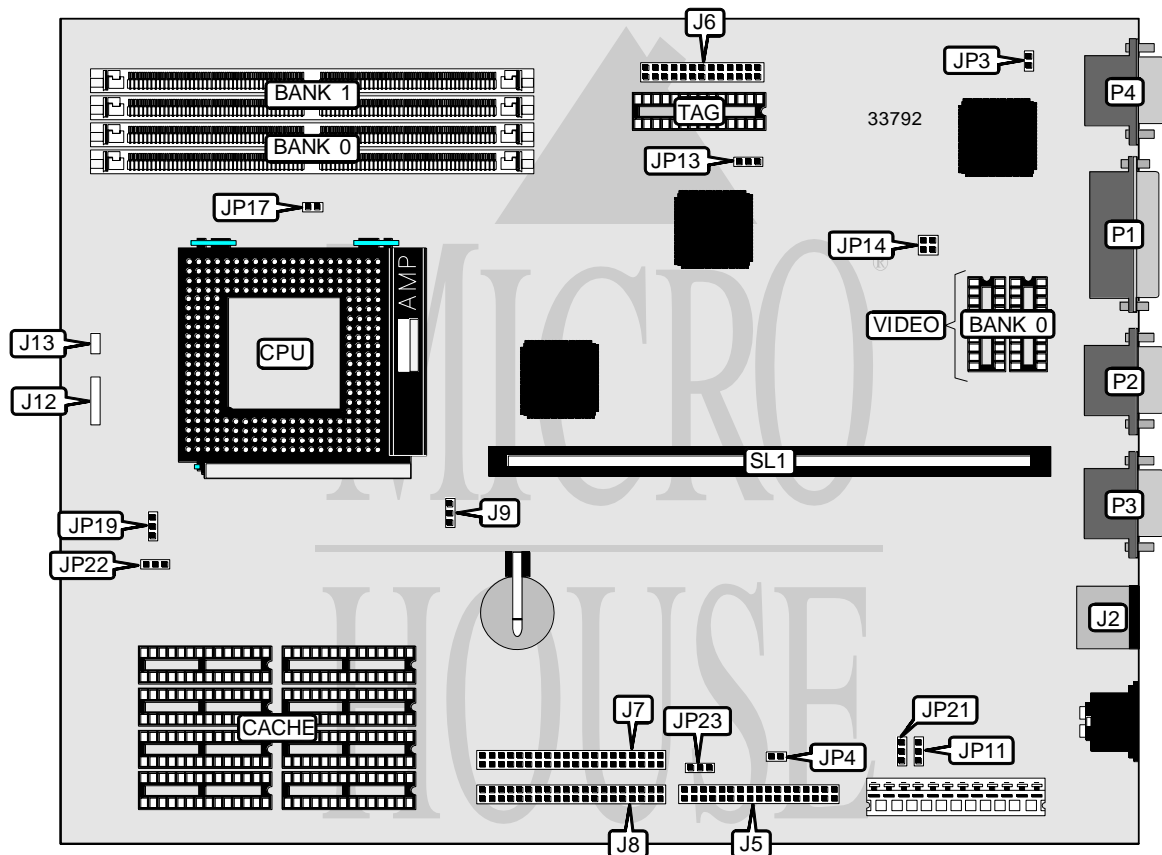


IBM CORPORATION

PC 340 SERIES (TYPE 6560)

Processor	Pentium
Processor Speed	100/133MHz
Chip Set	Unidentified
Video Chip Set	Unidentified
Maximum Onboard Memory	128MB (EDO supported)
Maximum Video Memory	Unidentified
Cache	256/512KB
BIOS	Unidentified
Dimensions	254mm x 218mm
I/O Options	Floppy drive interface, IDE interfaces (2), parallel port, PS/2 mouse port, serial ports (2), feature connector, VGA port, riser slot
NPU Options	None



Continued on next page...

IBM CORPORATION

PC 340 SERIES (TYPE 6560)

... continued from previous page

CONNECTIONS			
Purpose	Location	Purpose	Location
PS/2 mouse port	J2	Chassis fan power	J13
Floppy drive interface	J5	Parallel port	P1
Feature connector	J6	Serial port 2	P2
IDE interface 2	J7	Serial port 1	P3
IDE interface 1	J8	VGA port	P4
IDE interface LED/power LED	J12	Riser slot	SL1

USER CONFIGURABLE SETTINGS		
Function	Label	Position
í CMOS memory normal operation	J9	Pins 1 & 2 closed
CMOS memory clear	J9	Pins 2 & 3 closed
í On board video enabled	JP3	Closed
On board video disabled	JP3	Open
í PS/2 mouse enabled	JP4	Closed
PS/2 mouse disabled	JP4	Open
í Flash BIOS write protect disabled	JP11	Pins 1 & 2 closed
Flash BIOS write protect enabled	JP11	Pins 2 & 3 closed
í Floppy drive write protect disabled	JP21	Pins 1 & 2 closed
Floppy drive write protect enabled	JP21	Pins 2 & 3 closed
í Non linear burst enabled	JP22	Pins 1 & 2 closed
Linear burst disabled	JP22	Pins 2 & 3 closed
í HDD detect enabled	JP23	Pins 1 & 2 closed
HDD non detect enabled	JP23	Pins 2 & 3 closed

DRAM CONFIGURATION		
Size	Bank 0	Bank 1
8MB	(2) 1M x 32	None
16MB	(2) 2M x 32	None
16MB	(2) 1M x 32	(2) 1M x 32
32MB	(2) 4M x 32	None
32MB	(2) 2M x 32	(2) 2M x 32
48MB	(2) 2M x 32	(2) 4M x 32
64MB	(2) 8M x 32	None
64MB	(2) 4M x 32	(2) 4M x 32
72MB	(2) 8M x 32	(2) 1M x 32
80MB	(2) 8M x 32	(2) 2M x 32
96MB	(2) 8M x 32	(2) 4M x 32
128MB	(2) 8M x 32	(2) 8M x 32

Note: Board accepts EDO memory.

Continued on next page...

IBM CORPORATION

PC 340 SERIES (TYPE 6560)

... continued from previous page

CACHE CONFIGURATION			
Size	Bank 0	Bank 1	TAG
256KB	(4) 32K x 8	(4) 32K x 8	(1) 32K x 8
512KB	(4) 64K x 8	(4) 64K x 8	(1) 32K x 8

Note: The location of banks 0 & 1 are unidentified.

CACHE JUMPER CONFIGURATION	
Size	JP13
256KB	Pins 1 & 2 closed
512KB	Pins 2 & 3 closed

VIDEO MEMORY CONFIGURATION
Note: The size of the video memory is unidentified.

CPU SPEED SELECTION				
CPU speed	Clock speed	Multiplier	JP14	JP17
100MHz	66MHz	1.5x	Pins 1 & 2, 3 & 4 closed	Open
133MHz	66MHz	2x	Pins 1 & 2, 3 & 4 closed	Closed

CPU TYPE SELECTION	
Type	JP19
STD (3.3v)	Pins 1 & 2 closed
VRE (3.52v)	Pins 2 & 3 closed