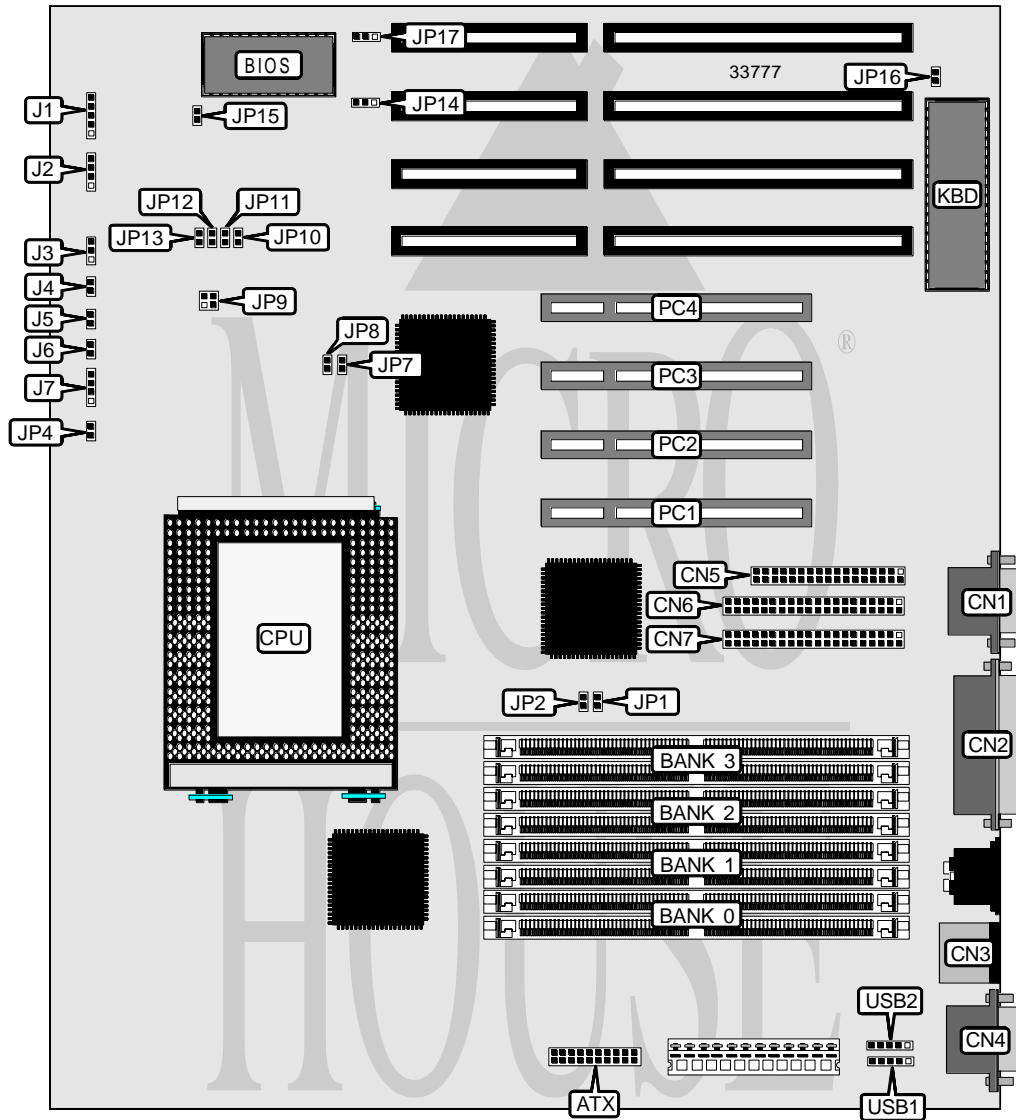


# M TECHNOLOGY, INC.

## R 651 PENTIUM PRO

<b>Processor</b>	Pentium Pro
<b>Processor Speed</b>	150/166/180/200MHz
<b>Chip Set</b>	Intel
<b>Video Chip Set</b>	None
<b>Maximum Onboard Memory</b>	1GB (BEDO/EDO supported)
<b>Maximum Video Memory</b>	None
<b>Cache</b>	256/512KB (located on Pentium Pro CPU)
<b>BIOS</b>	Award
<b>Dimensions</b>	304mm x 244mm
<b>I/O Options</b>	32-bit PCI slots (4), floppy drive interface, green PC connector, IDE interfaces (2), parallel port, PS/2 mouse port, serial ports (2), USB connectors (2), ATX power connector
<b>NPU Options</b>	None



Continued on next page . . .

**M TECHNOLOGY, INC.**  
**R 651 PENTIUM PRO**

... continued from previous page

CONNECTIONS			
Purpose	Location	Purpose	Location
ATX power connector	ATX	Speaker	J2
Serial port 2	CN1	Turbo switch	J3
Parallel port	CN2	Turbo LED	J4
PS/2 mouse port	CN3	Reset switch	J5
Serial port 1	CN4	Green PC connector	J6
Floppy drive interface	CN5	IDE interface LED	J7
IDE interface 2	CN6	32-bit PCI slots	PC1 - PC4
IDE interface 1	CN7	USB connector 1	USB1
Power LED & keylock	J1	USB connector 2	USB2

USER CONFIGURABLE SETTINGS		
Function	Label	Position
ATX power supply enabled	JP4	Closed
ATX power supply disabled	JP4	Open
í Factory configured - do not alter	JP9	Unidentified
í Flash BIOS write protect disabled	JP14	Pins 2 & 3 closed
Flash BIOS write protect enabled	JP14	Pins 1 & 2 closed
í CMOS memory normal operation	JP15	Open
CMOS memory clear	JP15	Closed
í Monitor type select monochrome/VGA	JP16	Open
Monitor type select CGA	JP16	Closed
Flash BIOS voltage select 12v	JP17	Pins 2 & 3 closed
Flash BIOS voltage select 5v	JP17	Pins 1 & 2 closed

DRAM CONFIGURATION				
Size	Bank 0	Bank 1	Bank 2	Bank 3
8MB	(2) 1M x 36	None	None	None
16MB	(2) 1M x 36	(2) 1M x 36	None	None
16MB	(2) 2M x 36	None	None	None
24MB	(2) 1M x 36	(2) 1M x 36	(2) 1M x 36	None
24MB	(2) 1M x 36	(2) 2M x 36	None	None
24MB	(2) 2M x 36	(2) 1M x 36	None	None
32MB	(2) 1M x 36	(2) 1M x 36	(2) 1M x 36	(2) 1M x 36
32MB	(2) 2M x 36	(2) 1M x 36	(2) 1M x 36	None
32MB	(2) 2M x 36	(2) 2M x 36	None	None
32MB	(2) 4M x 36	None	None	None
40MB	(2) 1M x 36	(2) 2M x 36	(2) 2M x 36	None
40MB	(2) 1M x 36	(2) 4M x 36	None	None
40MB	(2) 2M x 36	(2) 1M x 36	(2) 1M x 36	(2) 1M x 36
40MB	(2) 4M x 36	(2) 1M x 36	None	None
48MB	(2) 2M x 36	(2) 2M x 36	(2) 2M x 36	None
48MB	(2) 2M x 36	(2) 4M x 36	None	None

Continued on next page...

# M TECHNOLOGY, INC.

## R 651 PENTIUM PRO

... continued from previous page

DRAM CONFIGURATION (CON'T)				
Size	Bank 0	Bank 1	Bank 2	Bank 3
48MB	(2) 4M x 36	(2) 1M x 36	(2) 1M x 36	None
48MB	(2) 4M x 36	(2) 2M x 36	None	None
56MB	(2) 1M x 36	(2) 2M x 36	(2) 2M x 36	(2) 2M x 36
56MB	(2) 4M x 36	(2) 1M x 36	(2) 1M x 36	(2) 1M x 36
64MB	(2) 4M x 36	(2) 2M x 36	(2) 2M x 36	None
64MB	(2) 4M x 36	(2) 4M x 36	None	None
64MB	(2) 8M x 36	None	None	None
72MB	(2) 1M x 36	(2) 4M x 36	(2) 4M x 36	None
72MB	(2) 1M x 36	(2) 8M x 36	None	None
72MB	(2) 8M x 36	(2) 1M x 36	None	None
80MB	(2) 2M x 36	(2) 4M x 36	(2) 4M x 36	None
80MB	(2) 2M x 36	(2) 8M x 36	None	None
80MB	(2) 4M x 36	(2) 2M x 36	(2) 2M x 36	(2) 2M x 36
80MB	(2) 8M x 36	(2) 1M x 36	(2) 1M x 36	None
80MB	(2) 8M x 36	(2) 2M x 36	None	None
88MB	(2) 8M x 36	(2) 1M x 36	(2) 1M x 36	(2) 1M x 36
96MB	(2) 4M x 36	(2) 4M x 36	(2) 4M x 36	None
96MB	(2) 4M x 36	(2) 8M x 36	None	None
96MB	(2) 8M x 36	(2) 2M x 36	(2) 2M x 36	None
96MB	(2) 8M x 36	(2) 4M x 36	None	None
104MB	(2) 1M x 36	(2) 4M x 36	(2) 4M x 36	(2) 4M x 36
112MB	(2) 2M x 36	(2) 4M x 36	(2) 4M x 36	(2) 4M x 36
112MB	(2) 8M x 36	(2) 2M x 36	(2) 2M x 36	(2) 2M x 36
128MB	(2) 4M x 36	(2) 4M x 36	(2) 4M x 36	(2) 4M x 36
128MB	(2) 8M x 36	(2) 4M x 36	(2) 4M x 36	None
128MB	(2) 8M x 36	(2) 8M x 36	None	None
128MB	(2) 16M x 36	None	None	None
136MB	(2) 1M x 36	(2) 8M x 36	(2) 8M x 36	None
136MB	(2) 16M x 36	(2) 1M x 36	None	None
144MB	(2) 2M x 36	(2) 8M x 36	(2) 8M x 36	None
144MB	(2) 2M x 36	(2) 16M x 36	None	None
144MB	(2) 16M x 36	(2) 1M x 36	(2) 1M x 36	None
144MB	(2) 16M x 36	(2) 2M x 36	None	None
152MB	(2) 16M x 36	(2) 1M x 36	(2) 1M x 36	(2) 1M x 36
160MB	(2) 4M x 36	(2) 8M x 36	(2) 8M x 36	None
160MB	(2) 4M x 36	(2) 16M x 36	None	None
160MB	(2) 8M x 36	(2) 4M x 36	(2) 4M x 36	(2) 4M x 36
160MB	(2) 16M x 36	(2) 2M x 36	(2) 2M x 36	None
160MB	(2) 16M x 36	(2) 4M x 36	None	None
176MB	(2) 16M x 36	(2) 2M x 36	(2) 2M x 36	(2) 2M x 36
192MB	(2) 8M x 36	(2) 8M x 36	(2) 8M x 36	None
192MB	(2) 8M x 36	(2) 16M x 36	None	None

Continued on next page...

# M TECHNOLOGY, INC.

## R651 PENTIUM PRO

... continued from previous page

DRAM CONFIGURATION (CON'T)				
Size	Bank 0	Bank 1	Bank 2	Bank 3
192MB	(2) 16M x 36	(2) 4M x 36	(2) 4M x 36	None
192MB	(2) 16M x 36	(2) 8M x 36	None	None
200MB	(2) 1M x 36	(2) 8M x 36	(2) 8M x 36	(2) 8M x 36
208MB	(2) 2M x 36	(2) 8M x 36	(2) 8M x 36	(2) 8M x 36
224MB	(2) 4M x 36	(2) 8M x 36	(2) 8M x 36	(2) 8M x 36
224MB	(2) 16M x 36	(2) 4M x 36	(2) 4M x 36	(2) 4M x 36
256MB	(2) 8M x 36	(2) 8M x 36	(2) 8M x 36	(2) 8M x 36
256MB	(2) 32M x 36	None	None	None
256MB	(2) 16M x 36	(2) 8M x 36	(2) 8M x 36	None
256MB	(2) 16M x 36	(2) 16M x 36	None	None
264MB	(2) 1M x 36	(2) 16M x 36	(2) 16M x 36	None
264MB	(2) 32M x 36	(2) 1M x 36	None	None
272MB	(2) 2M x 36	(2) 16M x 36	(2) 16M x 36	None
272MB	(2) 32M x 36	(2) 1M x 36	(2) 1M x 36	None
272MB	(2) 32M x 36	(2) 2M x 36	None	None
280MB	(2) 32M x 36	(2) 1M x 36	(2) 1M x 36	(2) 1M x 36
288MB	(2) 4M x 36	(2) 16M x 36	(2) 16M x 36	None
288MB	(2) 32M x 36	(2) 2M x 36	(2) 2M x 36	None
288MB	(2) 32M x 36	(2) 4M x 36	None	None
304MB	(2) 32M x 36	(2) 2M x 36	(2) 2M x 36	(2) 2M x 36
320MB	(2) 8M x 36	(2) 16M x 36	(2) 16M x 36	None
320MB	(2) 32M x 36	(2) 4M x 36	(2) 4M x 36	None
320MB	(2) 32M x 36	(2) 8M x 36	None	None
320MB	(2) 16M x 36	(2) 8M x 36	(2) 8M x 36	(2) 8M x 36
352MB	(2) 32M x 36	(2) 4M x 36	(2) 4M x 36	(2) 4M x 36
384MB	(2) 32M x 36	(2) 8M x 36	(2) 8M x 36	None
384MB	(2) 32M x 36	(2) 16M x 36	None	None
384MB	(2) 16M x 36	(2) 16M x 36	(2) 16M x 36	None
392MB	(2) 1M x 36	(2) 16M x 36	(2) 16M x 36	(2) 16M x 36
400MB	(2) 2M x 36	(2) 16M x 36	(2) 16M x 36	(2) 16M x 36
416MB	(2) 4M x 36	(2) 16M x 36	(2) 16M x 36	(2) 16M x 36
448MB	(2) 8M x 36	(2) 16M x 36	(2) 16M x 36	(2) 16M x 36
448MB	(2) 32M x 36	(2) 8M x 36	(2) 8M x 36	(2) 8M x 36
512MB	(2) 32M x 36	(2) 16M x 36	(2) 16M x 36	None
512MB	(2) 32M x 36	(2) 32M x 36	None	None
512MB	(2) 16M x 36	(2) 16M x 36	(2) 16M x 36	(2) 16M x 36
640MB	(2) 32M x 36	(2) 16M x 36	(2) 16M x 36	(2) 16M x 36
768MB	(2) 32M x 36	(2) 32M x 36	(2) 32M x 36	None
1GB	(2) 32M x 36	(2) 32M x 36	(2) 32M x 36	(2) 32M x 36

Note: Board accepts BEDO/EDO memory. Board also accepts x 32 SIMMs. Banks are interchangeable.

### CACHE CONFIGURATION

Note: 256KB/512KB cache is located on the Pentium Pro CPU.

Continued on next page...

M TECHNOLOGY, INC.  
R 6 5 1 P E N T I U M P R O

... continued from previous page

CPU SPEED SELECTION						
CPU speed	Clock speed	Multiplier	JP1	JP2	JP7	JP8
150MHz	60MHz	2.5x	Open	Closed	Open	Closed
166MHz	66MHz	2.5x	Closed	Open	Closed	Open
180MHz	60MHz	3x	Open	Closed	Open	Closed
200MHz	66MHz	3x	Closed	Open	Closed	Open

CPU SPEED SELECTION (CON'T)						
CPU speed	Clock speed	Multiplier	JP10	JP11	JP12	JP13
150MHz	60MHz	2.5x	Open	Closed	Closed	Closed
166MHz	66MHz	2.5x	Open	Closed	Closed	Closed
180MHz	60MHz	3x	Closed	Open	Closed	Closed
200MHz	66MHz	3x	Closed	Open	Closed	Closed