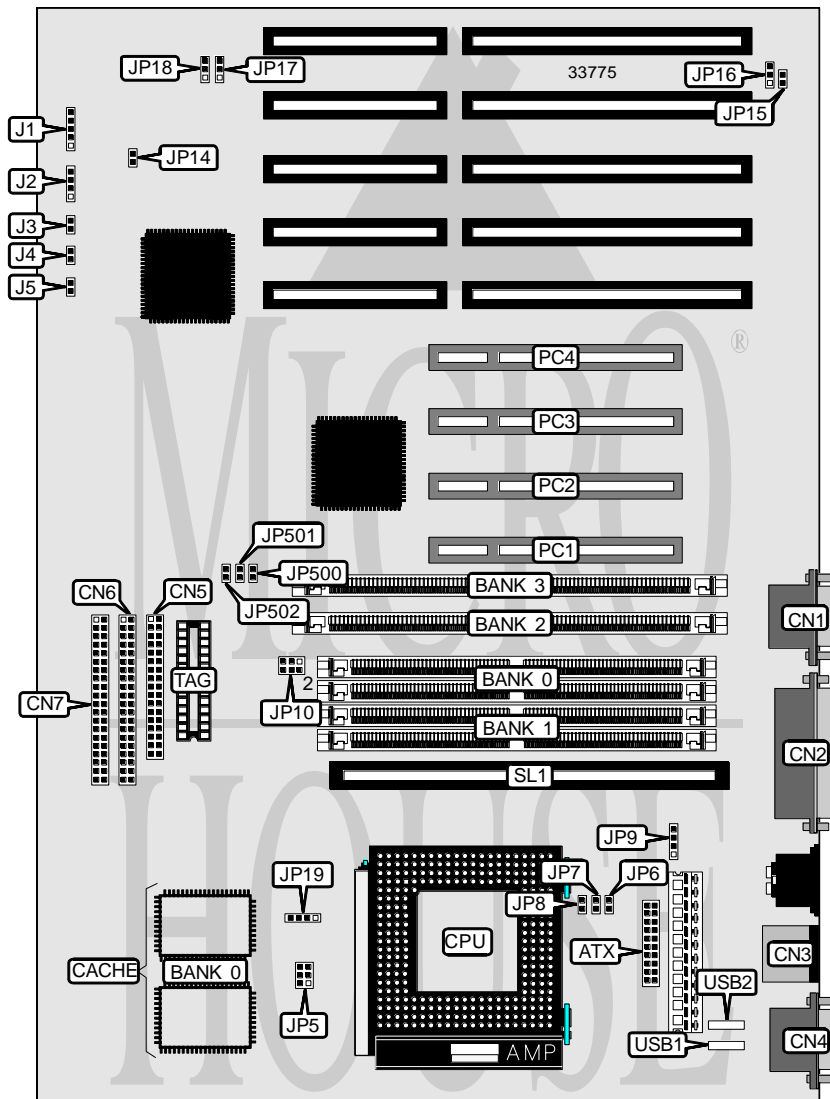


# M TECHNOLOGY, INC.

## R552 PENTIUM PCI/ISA

<b>Processor</b>	CX M1/AM K5/Pentium
<b>Processor Speed</b>	75/90/100/120/133/150/166/180/200MHz
<b>Chip Set</b>	Intel
<b>Video Chip Set</b>	None
<b>Maximum Onboard Memory</b>	128MB (EDO supported)
<b>Maximum Video Memory</b>	None
<b>Cache</b>	256/512KB
<b>BIOS</b>	Award
<b>Dimensions</b>	304mm x 244mm
<b>I/O Options</b>	32-bit PCI slots (4), floppy drive interface, green PC connector, IDE interfaces (2), parallel port, PS/2 mouse port, serial ports (2), cache slot, USB connectors (2), ATX power connector
<b>NPU Options</b>	None



*Continued on next page. . .*

# M TECHNOLOGY, INC.

## R552 PENTIUM PCI/ISA

... continued from previous page

CONNECTIONS			
Purpose	Location	Purpose	Location
ATX power connector	ATX	Speaker	J2
Serial port 2	CN1	Reset switch	J3
Parallel port	CN2	Green PC connector	J4
PS/2 mouse port	CN3	IDE interface LED	J5
Serial port 1	CN4	32-bit PCI slots	PC1 - PC4
Floppy drive interface	CN5	Cache slot	SL1
IDE interface 1	CN6	USB connector 1	USB1
IDE interface 2	CN7	USB connector 2	USB2
Power LED & keylock	J1		

USER CONFIGURABLE SETTINGS		
Function	Label	Position
í CMOS memory normal operation	JP14	Open
CMOS memory clear	JP14	Closed
Monitor type select CGA	JP15	Closed
Monitor type select monochrome/EGA/VGA	JP15	Open
í PS/2 mouse enabled	JP16	Pins 1 & 2 closed
PS/2 mouse disabled	JP16	Pins 2 & 3 closed

DRAM CONFIGURATION		
Size	Bank 0	Bank 1
4MB	(2) 512K x 36	None
6MB	(2) 512K x 36	(2) 256K x 36
8MB	(2) 1M x 36	None
8MB	(2) 512K x 36	(2) 512K x 36
12MB	(2) 1M x 36	(2) 512K x 36
16MB	(2) 2M x 36	None
16MB	(2) 1M x 36	(2) 1M x 36
20MB	(2) 2M x 36	(2) 512K x 36
24MB	(2) 2M x 36	(2) 1M x 36
32MB	(2) 4M x 36	None
32MB	(2) 2M x 36	(2) 2M x 36
36MB	(2) 4M x 36	(2) 512K x 36
40MB	(2) 4M x 36	(2) 1M x 36
48MB	(2) 4M x 36	(2) 2M x 36
64MB	(2) 8M x 36	None
64MB	(2) 4M x 36	(2) 4M x 36
68MB	(2) 8M x 36	(2) 512K x 36
72MB	(2) 8M x 36	(2) 1M x 36
80MB	(2) 8M x 36	(2) 2M x 36
96MB	(2) 8M x 36	(2) 4M x 36
128MB	(2) 8M x 36	(2) 8M x 36
Note: Board accepts EDO memory. If these configurations are used, DIMM sockets must be empty. Board also accepts x 32 SIMMs.		

*Continued on next page. . .*

# M TECHNOLOGY, INC.

## R552 PENTIUM PCI/ISA

... continued from previous page

DIMM CONFIGURATION		
Size	Bank 2	Bank 3
8MB	(1) 1M x 64	None
16MB	(1) 2M x 64	None
16MB	(1) 1M x 64	(1) 1M x 64
24MB	(1) 2M x 64	(1) 1M x 64
32MB	(1) 4M x 64	None
32MB	(1) 2M x 64	(1) 2M x 64
40MB	(1) 4M x 64	(1) 1M x 64
48MB	(1) 4M x 64	(1) 2M x 64
64MB	(1) 8M x 64	None
64MB	(1) 4M x 64	(1) 4M x 64
72MB	(1) 8M x 64	(1) 1M x 64
80MB	(1) 8M x 64	(1) 2M x 64
96MB	(1) 8M x 64	(1) 4M x 64
128MB	(1) 8M x 64	(1) 8M x 64
Note: If these configurations are used, DIMM sockets must be empty.		

DIMM VOLTAGE CONFIGURATION	
Voltage	JP10
3.3v	Pins 3 & 5, 4 & 6, closed
5v	Pins 1 & 3, 2 & 4 closed

CACHE CONFIGURATION			
Size	Bank 0	SL1	TAG
256KB	(2) 32K x 32	Not installed	(1) 32K x 8
512KB	(2) 32K x 32	256KB module installed	(1) 32K x 8
512KB	(2) 64K x 32	256KB module installed	(1) 32K x 8

CPU SPEED SELECTION (CYRIX)								
CPU speed	Clock speed	Multiplier	JP6	JP7	JP8	JP500	JP501	JP502
120MHz	50MHz	2x	Open	Closed	Open	Open	Open	Open
133MHz	55MHz	2x	Open	Closed	Open	Closed	Open	Open
150MHz	60MHz	2x	Closed	Closed	Open	Open	Open	Closed
166MHz	66MHz	2x	Open	Closed	Open	Open	Closed	Open

CPU SPEED SELECTION (AMD)								
CPU speed	Clock speed	Multiplier	JP6	JP7	JP8	JP500	JP501	JP502
75MHz	50MHz	1.5x	Open	Open	Open	Open	Open	Open
90MHz	60MHz	1.5x	Closed	Open	Open	Open	Open	Closed
100MHz	66MHz	1.5x	Open	Open	Open	Open	Closed	Open

Continued on next page...

# M TECHNOLOGY, INC.

## R552 PENTIUM PCI/ISA

... continued from previous page

CPU SPEED SELECTION (INTEL)								
CPU speed	Clock speed	Multiplier	JP6	JP7	JP8	JP500	JP501	JP502
75MHz	50MHz	1.5x	Open	Open	Open	Open	Open	Open
90MHz	60MHz	1.5x	Closed	Open	Open	Open	Open	Closed
100MHz	66MHz	1.5x	Open	Open	Open	Open	Closed	Open
120MHz	60MHz	2x	Closed	Closed	Open	Open	Open	Closed
133MHz	66MHz	2x	Open	Closed	Open	Open	Closed	Open
150MHz	60MHz	2.5x	Closed	Closed	Closed	Open	Open	Closed
166MHz	66MHz	2.5x	Open	Closed	Closed	Open	Closed	Open
180MHz	60MHz	3x	Closed	Open	Closed	Open	Open	Closed
200MHz	66MHz	3x	Open	Open	Closed	Open	Closed	Open

CPU VOLTAGE SELECTION (SINGLE POWER CPU)			
CPU type	Voltage	JP5	JP9
CX M1/AM K5/P54C	3.3v	1 & 2, 3 & 4, 5 & 6	1 & 2, 3 & 4
CX M1/AM K5/P54C	3.45v	1 & 2, 3 & 4, 5 & 6	1 & 2
CX M1/AM K5/P54C	3.5v	1 & 2, 3 & 4, 5 & 6	Open
Note: Pins designated should be in the closed position.			

CPU VOLTAGE SELECTION(DUAL POWER CPU)					
CPU type	Voltage 1	Voltage 2	JP5	JP9	JP19
P55C	3.3v	2.5v	Open	1 & 2, 3 & 4	1 & 2, 3 & 4
P55C	3.45v	2.7v	Open	1 & 2	1 & 2
P55C	3.5v	2.8v	Open	Open	Open
Note: Pins designated should be in the closed position.					

FLASH BIOS SELECTION		
Voltage	JP17	JP18
None	Pins 1 & 2 closed	Pins 1 & 2 closed
5v	Pins 1 & 2 closed	Pins 2 & 3 closed
12v	Pins 2 & 3 closed	Pins 2 & 3 closed