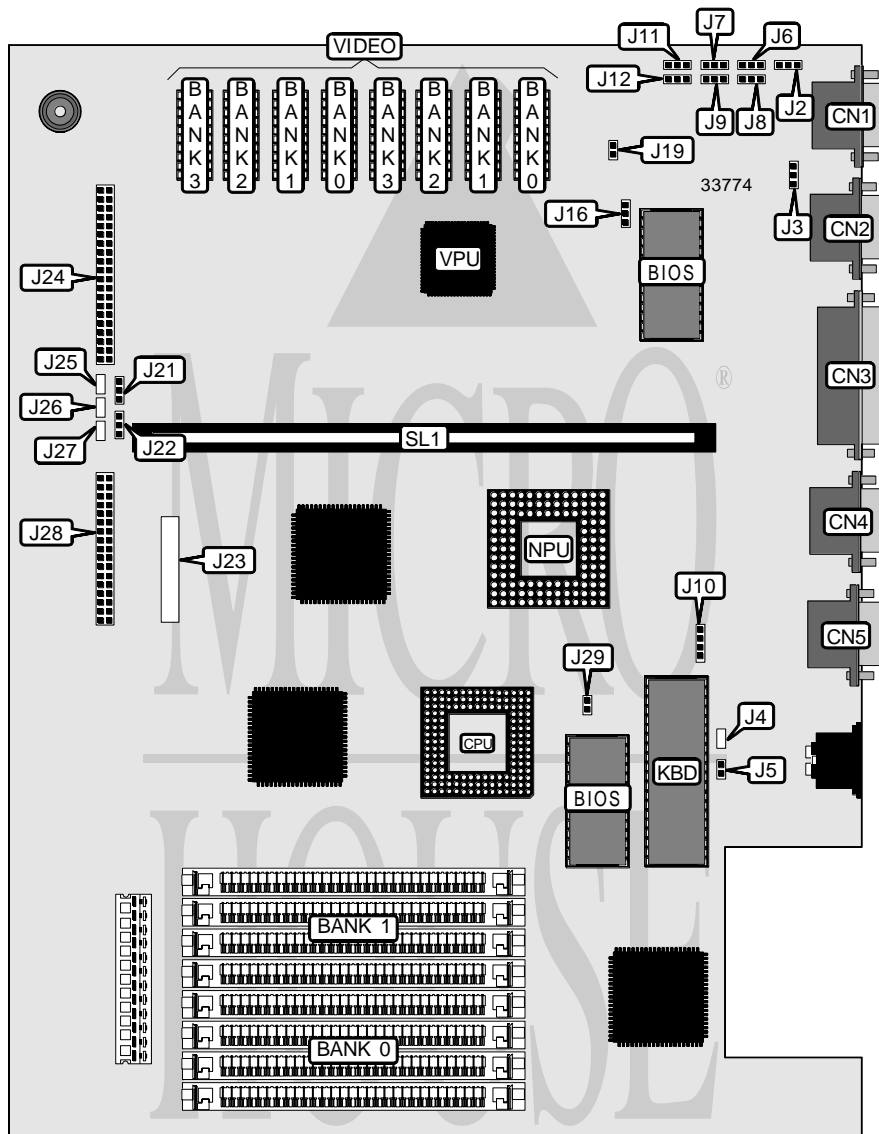


# UNIDENTIFIED 386DX-25/33 SYSTEM

<b>Processor</b>	80386DX
<b>Processor Speed</b>	25/33MHz
<b>Chip Set</b>	Unidentified
<b>Video Chip Set</b>	Trident
<b>Maximum Onboard Memory</b>	32MB
<b>Maximum Video Memory</b>	1MB
<b>Cache</b>	None
<b>BIOS</b>	Phoenix
<b>Dimensions</b>	378mm x 310mm
<b>I/O Options</b>	Floppy drive interface, game port, IDE interface, parallel port, serial ports (2), VGA port, riser slot, modem connector
<b>NPU Options</b>	80387DX/3167



*Continued on next page . . .*

# UNIDENTIFIED 386DX-25/33 SYSTEM

... continued from previous page

CONNECTIONS			
Purpose	Location	Purpose	Location
Game port	CN1	IDE interface	J24
VGA port	CN2	IDE interface LED	J25
Parallel port	CN3	Floppy drive interface LED	J26
Serial port 2	CN4	Power LED	J27
Serial port 1	CN5	Floppy drive interface	J28
Chassis fan power	J4	Reset switch	J29
External battery	J10	Riser slot	SL1
Modem connector	J23		

USER CONFIGURABLE SETTINGS		
Function	Label	Position
HDC enabled	J2	Pins 2 & 3 closed
HDC disabled	J2	Pins 1 & 2 closed
Game port enabled	J3	Pins 1 & 2 closed
Game port disabled	J3	Pins 2 & 3 closed
Monitor type select color	J5	Closed
Monitor type select monochrome	J5	Open
Serial port 2 enabled	J6	Pins 1 & 2 closed
Serial port 2 disabled	J6	Pins 2 & 3 closed
Parallel port enabled	J7	Pins 1 & 2 closed
Parallel port disabled	J7	Pins 2 & 3 closed
Serial port 2 COM select COM2	J8	Pins 1 & 2 closed
Serial port 2 COM select COM4	J8	Pins 2 & 3 closed
Parallel port LPT select LPT1	J9	Pins 1 & 2 closed
Parallel port LPT select LPT2	J9	Pins 2 & 3 closed
Serial port 1 enabled	J11	Pins 1 & 2 closed
Serial port 1 disabled	J11	Pins 2 & 3 closed
Serial port 1 COM select COM1	J12	Pins 1 & 2 closed
Serial port 1 COM select COM3	J12	Pins 2 & 3 closed
Monitor type select standard	J16	Pins 1 & 2 closed
Monitor type select non standard monochrome	J16	Pins 2 & 3 closed
Monitor type select non standard color	J16	Open
Video mode select interlaced	J19	Closed
Video mode select non interlaced	J19	Open
IDE interface enabled	J21	Pins 1 & 2 closed
IDE interface disabled	J21	Pins 2 & 3 closed
Floppy drive interface enabled	J22	Pins 1 & 2 closed
Floppy drive interface disabled	J22	Pins 2 & 3 closed

Continued on next page...

# UNIDENTIFIED 386DX-25/33 SYSTEM

... continued from previous page

DRAM CONFIGURATION		
Size	Bank 0	Bank 1
1MB	(4) 256K x 9	None
2MB	(4) 256K x 9	(4) 256K x 9
4MB	(4) 1M x 9	None
5MB	(4) 1M x 9	(4) 256K x 9
8MB	(4) 1M x 9	(4) 1M x 9
16MB	(4) 4M x 9	None
17MB	(4) 4M x 9	(4) 256K x 9
20MB	(4) 4M x 9	(4) 1M x 9
32MB	(4) 4M x 9	(4) 4M x 9

Note: Banks are interchangeable.

VIDEO MEMORY CONFIGURATION				
Size	Bank 0	Bank 1	Bank 2	Bank 3
256KB	(2) 44256	None	None	None
512KB	(2) 44256	(2) 44256	None	None
1MB	(2) 44256	(2) 44256	(2) 44256	(2) 44256