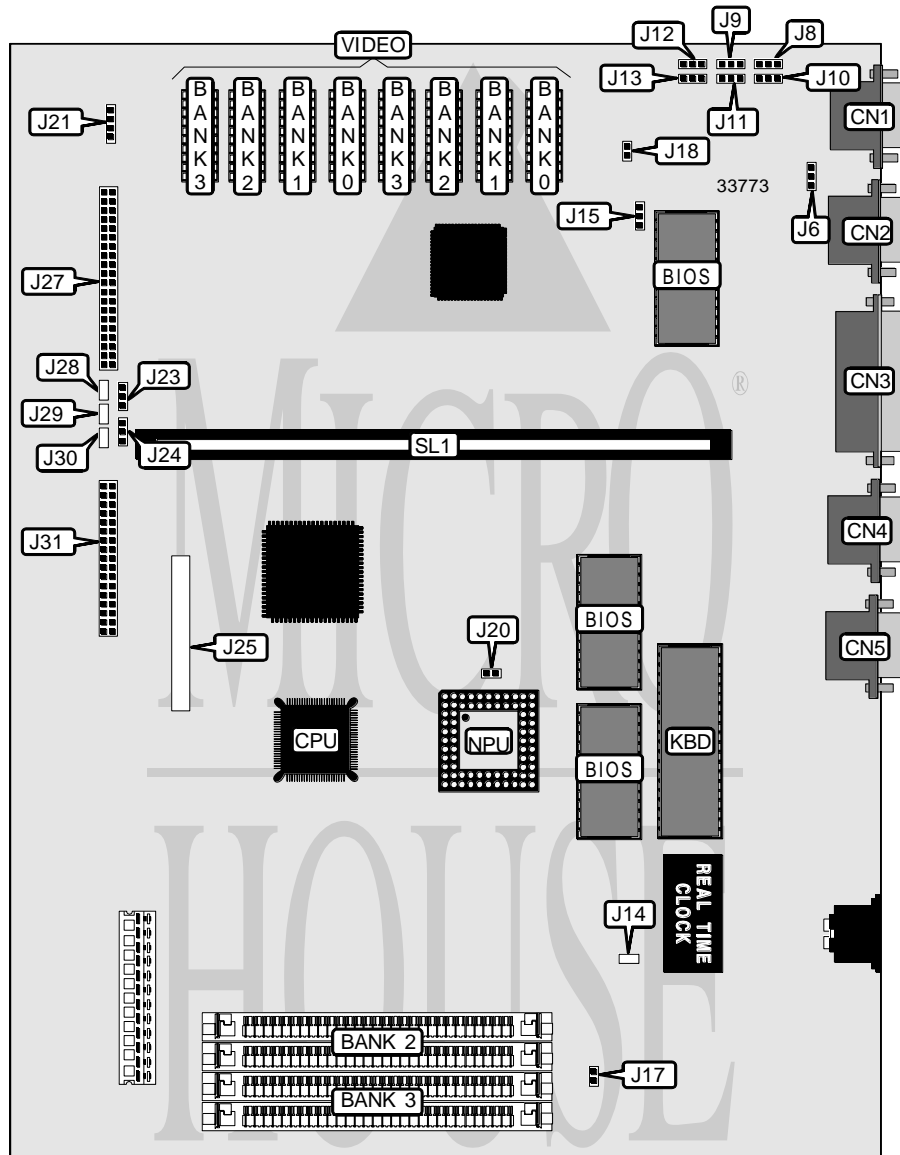


# UNIDENTIFIED 386SX SYSTEM

<b>Processor</b>	80386SX
<b>Processor Speed</b>	16/25MHz
<b>Chip Set</b>	Headland
<b>Video Chip Set</b>	Trident
<b>Maximum Onboard Memory</b>	6MB
<b>Maximum Video Memory</b>	1MB
<b>Cache</b>	None
<b>BIOS</b>	Phoenix
<b>Dimensions</b>	396mm x 368mm
<b>I/O Options</b>	Floppy drive interface, game port, IDE interface, parallel port, serial ports (2), VGA port, riser slot, modem/fax interface
<b>NPU Options</b>	80387SX



Continued on next page. . .

# UNIDENTIFIED 386SX SYSTEM

... continued from previous page

CONNECTIONS			
Purpose	Location	Purpose	Location
Game port	CN1	Modem/fax interface	J25
VGA port	CN2	IDE interface	J27
Parallel port	CN3	IDE interface LED	J28
Serial port 2	CN4	Floppy drive interface LED	J29
Serial port 1	CN5	Power LED	J30
Chassis fan power	J14	Floppy drive interface	J31
Reset switch	J17	Riser slot	SL1
Speaker	J21		

USER CONFIGURABLE SETTINGS		
Function	Label	Position
Game port enabled	J6	Pins 1 & 2 closed
Game port disabled	J6	Pins 2 & 3 closed
Serial port 2 enabled	J8	Pins 1 & 2 closed
Serial port 2 disabled	J8	Pins 2 & 3 closed
Parallel port enabled	J9	Pins 1 & 2 closed
Parallel port disabled	J9	Pins 2 & 3 closed
Serial port 2 address select 2F8	J10	Pins 1 & 2 closed
Serial port 2 address select 2E8	J10	Pins 2 & 3 closed
Parallel port address select 378	J11	Pins 1 & 2 closed
Parallel port address select 278	J11	Pins 2 & 3 closed
Serial port 1 enabled	J12	Pins 1 & 2 closed
Serial port 1 disabled	J12	Pins 2 & 3 closed
Serial port 1 address select 3F8	J13	Pins 1 & 2 closed
Serial port 1 address select 3E8	J13	Pins 2 & 3 closed
Monitor type select color	J15	Pins 1 & 2 closed
Monitor type select monochrome	J15	Pins 2 & 3 closed
Video mode select interlaced	J18	Closed
Video mode select non interlaced	J18	Open
NPU synchronous with CPU	J20	Open
NPU asynchronous with CPU	J20	Closed
IDE interface enabled	J23	Pins 1 & 2 closed
IDE interface disabled	J23	Pins 2 & 3 closed
Floppy drive interface enabled	J24	Pins 1 & 2 closed
Floppy drive interface disabled	J24	Pins 2 & 3 closed

Continued on next page...

# UNIDENTIFIED 386SX SYSTEM

... continued from previous page

DRAM CONFIGURATION				
Size	Bank 0	Bank 1	Bank 2	Bank 3
1MB	512KB	512KB	None	None
1.5MB	512KB	512KB	(2) 256K x 9	None
2MB	512KB	512KB	(2) 256K x 9	(2) 256K x 9
3MB	512KB	512KB	(2) 1M x 9	None
5MB	512KB	512KB	(2) 1M x 9	(2) 1M x 9
3MB	1MB	None	(2) 256K x 9	(2) 256K x 9
4MB	1MB	None	(2) 1M x 9	None
6MB	1MB	None	(2) 1M x 9	(2) 1M x 9

Note: Bank 0 or banks 0 & 1 are factory installed and is not configurable.

VIDEO MEMORY CONFIGURATION				
Size	Bank 0	Bank 1	Bank 2	Bank 3
256KB	(2) 44256	None	None	None
512KB	(2) 44256	(2) 44256	None	None
1MB	(2) 44256	(2) 44256	(2) 44256	(2) 44256