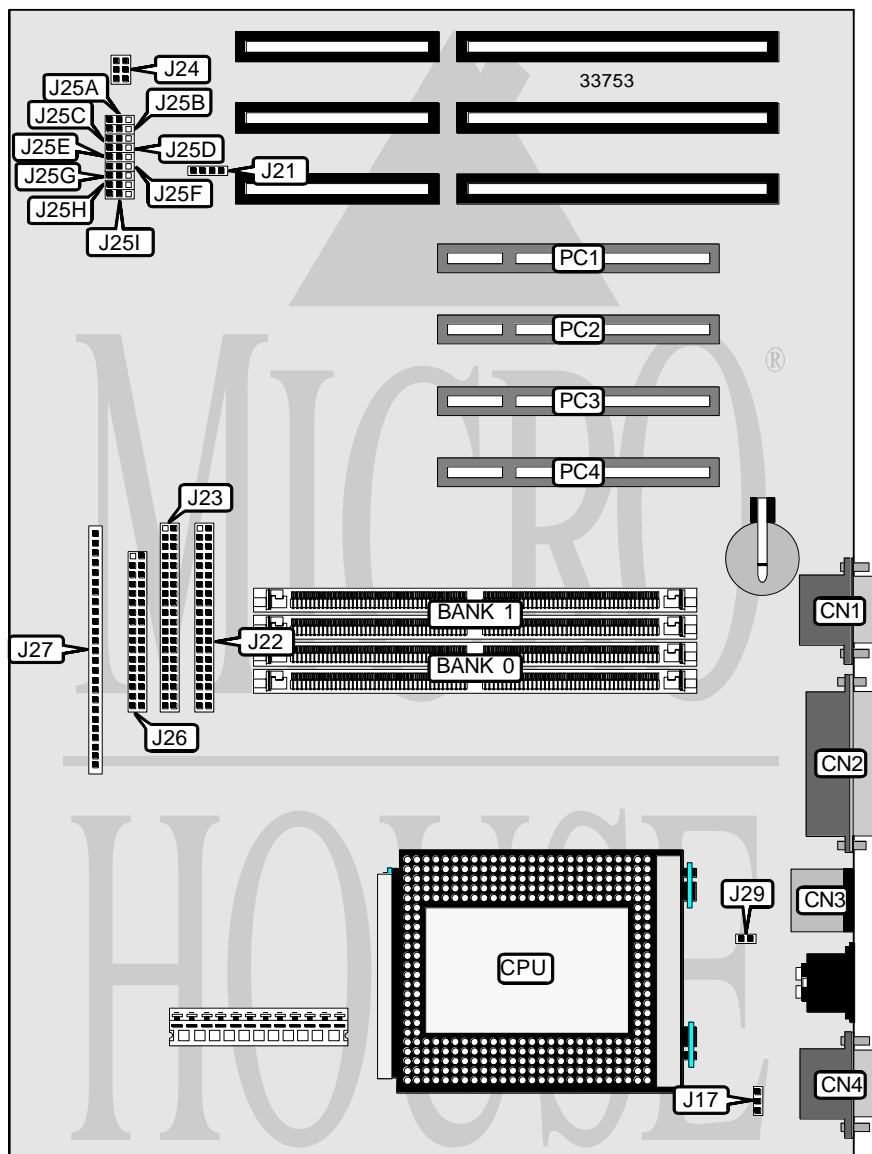


# AST RESEARCH, INC.

## BRAVO MS-T (DENALI)

<b>Processor</b>	Pentium Pro
<b>Processor Speed</b>	133/150/166/180/200MHz
<b>Chip Set</b>	Unidentified
<b>Video Chip Set</b>	None
<b>Maximum Onboard Memory</b>	128MB
<b>Maximum Video Memory</b>	None
<b>Cache</b>	256KB (located on Pentium Pro CPU)
<b>BIOS</b>	Unidentified
<b>Dimensions</b>	330mm x 218mm
<b>I/O Options</b>	32-bit PCI slots (4), floppy drive interface, IDE interfaces (2), parallel port, PS/2 mouse port, serial ports (2)
<b>NPU Options</b>	None



*Continued on next page. . .*

# AST RESEARCH, INC.

## BRAVO MS-T (DENALI)

... continued from previous page

CONNECTIONS			
Purpose	Location	Purpose	Location
Serial port	CN1	IDE interface 2	J22
Parallel port	CN2	IDE interface 1	J23
PS/2 mouse port	CN3	Chassis fan power	J24
Serial port	CN4	Floppy drive interface	J26
Chassis fan power	J17	Front panel connector	J27
IDE interface LED	J21	32-bit PCI slots	PC1 - PC4

USER CONFIGURABLE SETTINGS		
Function	Label	Position
í Password enabled	J25E	Pins 1 & 2 closed
Password disabled	J25E	Pins 2 & 3 closed
í CMOS memory normal operation	J25F	Pins 1 & 2 closed
CMOS memory clear	J25F	Pins 2 & 3 closed
í Setup access enabled	J25G	Pins 1 & 2 closed
Setup access disabled	J25G	Pins 2 & 3 closed
í Flash BIOS write protect enabled	J25H	Pins 1 & 2 closed
Flash BIOS write protect disabled	J25H	Pins 2 & 3 closed

DRAM CONFIGURATION		
Size	Bank 0	Bank 1
8MB	(2) 1M x 36	None
16MB	(2) 2M x 36	None
16MB	(2) 1M x 36	(2) 1M x 36
32MB	(2) 4M x 36	None
32MB	(2) 2M x 36	(2) 2M x 36
64MB	(2) 8M x 36	None
64MB	(2) 4M x 36	(2) 4M x 36
128MB	(2) 8M x 36	(2) 8M x 36

DRAM SPEED SELECTION	
Speed	J25I
í 60ns	Pins 1 & 2 closed
70ns	Pins 2 & 3 closed

CACHE CONFIGURATION
Note: 256KB cache is located on the Pentium Pro CPU.

Continued on next page...

AST RESEARCH, INC.  
BRAVO MS-T (DENALI)

... continued from previous page

hell

CPU SPEED SELECTION				
CPU speed	J25A	J25B	J25C	J25D
133MHz	Pins 1 & 2 closed	Pins 1 & 2 closed	Pins 1 & 2 closed	Pins 1 & 2 closed
150MHz	Pins 2 & 3 closed	Pins 2 & 3 closed	Pins 2 & 3 closed	Pins 1 & 2 closed
166MHz	Pins 1 & 2 closed	Pins 1 & 2 closed	Pins 2 & 3 closed	Pins 1 & 2 closed
180MHz	Pins 2 & 3 closed	Pins 2 & 3 closed	Pins 1 & 2 closed	Pins 2 & 3 closed
200MHz	Pins 1 & 2 closed	Pins 1 & 2 closed	Pins 1 & 2 closed	Pins 2 & 3 closed

CPU VOLTAGE SELECTION	
Voltage	J29
3.1v	Closed
Auto detect	Open