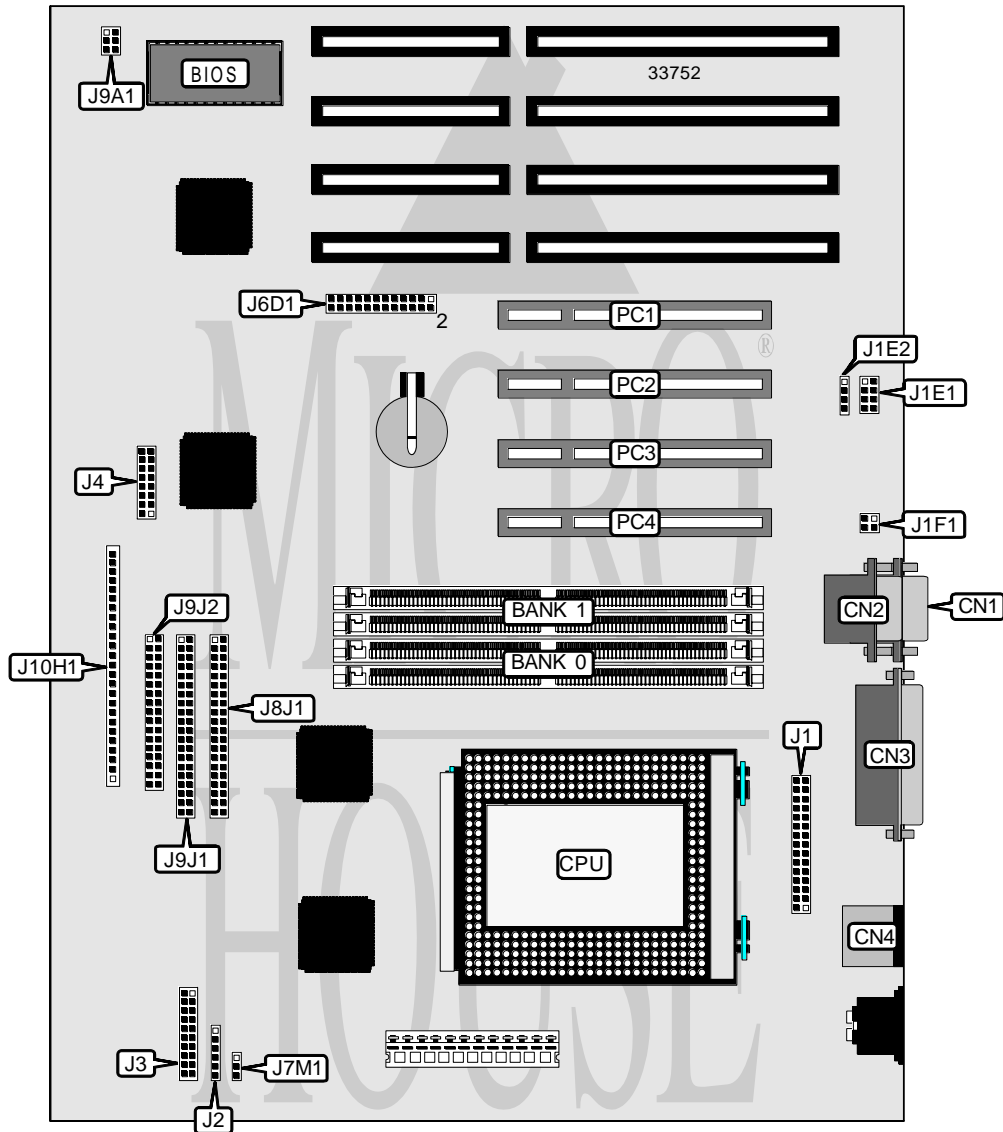


AST RESEARCH, INC. BRAVO MS-T (SAMANTHA)

Processor	Pentium Pro
Processor Speed	150/166/180/200MHz
Chip Set	Unidentified
Video Chip Set	None
Maximum Onboard Memory	256MB
Maximum Video Memory	None
Cache	256KB (located on Pentium Pro CPU)
BIOS	Unidentified
Dimensions	330mm x 218mm
I/O Options	32-bit PCI slots (4), CD-ROM connector, floppy drive interface, IDE interfaces (2), parallel port, PS/2 mouse port, serial ports (2), wavetable connector, modem audio connector
NPU Options	None



Continued on next page. . .

AST RESEARCH, INC.

BRAVO MS-T (SAMANTHA)

... continued from previous page

CONNECTIONS			
Purpose	Location	Purpose	Location
Serial port	CN1	Chassis fan power	J7M1
Serial port	CN2	IDE interface 2	J8J1
Parallel port	CN3	IDE interface 1	J9J1
PS/2 mouse port	CN4	Floppy drive interface	J9J2
Wavetable connector	J1E1	Front panel connector	J10H1
CD-ROM connector	J1E2	32-bit PCI slots	PC1 - PC4
Modem audio connector	J1F1		

USER CONFIGURABLE SETTINGS		
Function	Label	Position
í Factory configured - do not alter	J1	Unidentified
í Factory configured - do not alter	J2	Unidentified
í Factory configured - do not alter	J3	Unidentified
í Factory configured - do not alter	J4	Unidentified
í CMOS memory normal operation	J6D1	Pins 20 & 22 closed
CMOS memory clear	J6D1	Pins 18 & 20 closed
í Password enabled	J6D1	Pins 27 & 29 closed
Password disabled	J6D1	Pins 25 & 27 closed
í Setup access enabled	J6D1	Pins 28 & 30 closed
Setup access disabled	J6D1	Pins 26 & 28 closed
í Flash BIOS normal operation	J6D1	Pins 4 & 6 closed
Flash BIOS recovery mode	J6D1	Pins 2 & 4 closed
í Factory configured - do not alter	J9A1	Unidentified

DRAM CONFIGURATION		
Size	Bank 0	Bank 1
8MB	(2) 1M x 36	None
16MB	(2) 2M x 36	None
16MB	(2) 1M x 36	(2) 1M x 36
24MB	(2) 2M x 36	(2) 1M x 36
32MB	(2) 4M x 36	None
32MB	(2) 2M x 36	(2) 2M x 36
40MB	(2) 4M x 36	(2) 1M x 36
48MB	(2) 4M x 36	(2) 2M x 36
64MB	(2) 8M x 36	None
64MB	(2) 4M x 36	(2) 4M x 36
72MB	(2) 8M x 36	(2) 1M x 36
80MB	(2) 8M x 36	(2) 2M x 36
96MB	(2) 8M x 36	(2) 4M x 36
96MB	(2) 4M x 36	(2) 8M x 36
128MB	(2) 16M x 36	None
128MB	(2) 8M x 36	(2) 8M x 36

Continued on next page. . .

AST RESEARCH, INC.
BRAVO MS-T (SAMANTHA)

... continued from previous page

DRAM CONFIGURATION (CON'T)		
Size	Bank 0	Bank 1
136MB	(2) 16M x 36	(2) 1M x 36
144MB	(2) 16M x 36	(2) 2M x 36
160MB	(2) 16M x 36	(2) 4M x 36
192MB	(2) 16M x 36	(2) 8M x 36
256MB	(2) 16M x 36	(2) 16M x 36

Note: Board accepts EDO memory. Board also accepts x 32 SIMMs.

CACHE CONFIGURATION
Note: 256KB cache is located on the Pentium Pro CPU.

CPU SPEED SELECTION	
CPU speed	J6D1
150MHz	Pins 10 & 12, 11 & 13, 17 & 19 closed
166MHz	Pins 10 & 12, 11 & 13, 19 & 21 closed
180MHz	Pins 9 & 11, 12 & 14, 17 & 19 closed
200MHz	Pins 9 & 11, 12 & 14, 19 & 21 closed