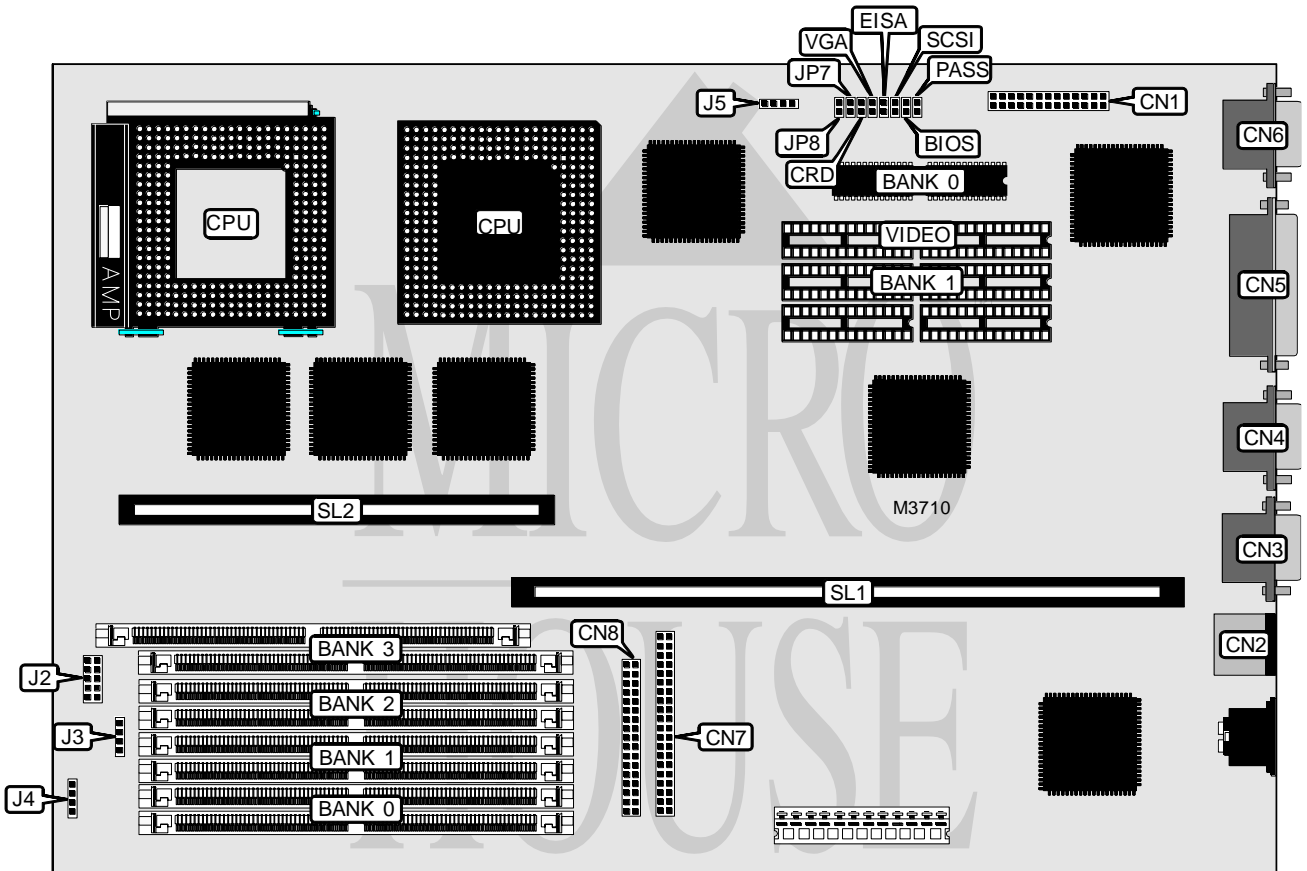


DELL COMPUTER CORPORATION OPTIPLEX DGX

Processor	Pentium
Processor Speed	90/100/120/133/150/166MHz
Chip Set	Unidentified
Video Chip Set	ATI
Maximum Onboard Memory	512MB
Maximum Video Memory	2MB
Cache	256/512KB
BIOS	Unidentified
Dimensions	330mm x 218mm
I/O Options	Floppy drive interface, IDE interface, parallel port, PS/2 mouse port, serial ports (2), feature connector, VGA port, riser slot, cache slot
NPU Options	None



Continued on next page...

DELL COMPUTER CORPORATION OPTIPLEX DGX

... continued from previous page

CONNECTIONS			
Purpose	Location	Purpose	Location
Feature connector	CN1	Floppy drive interface	CN8
PS/2 mouse port	CN2	Front panel connector	J2
Serial port 2	CN3	Speaker	J3
Serial port 1	CN4	External battery	J4
Parallel port	CN5	IDE interface LED	J5
VGA port	CN6	Riser slot	SL1
IDE interface	CN7	Cache slot	SL2

USER CONFIGURABLE SETTINGS		
Function	Label	Position
í Flash BIOS update enabled	BIOS	Closed
Flash BIOS update disabled	BIOS	Open
í Factory configured - do not alter	CRD	Unidentified
í EISA configuration settings cleared at boot	EISA	Open
EISA configuration settings not cleared at boot	EISA	Closed
í Password enabled	PASS	Closed
Password disabled	PASS	Open
í SCSI host adapter is terminated	SCSI	Closed
SCSI host adapter is not terminated	SCSI	Open
í On board video enabled	VGA	Closed
On board video disabled	VGA	Open

DRAM CONFIGURATION				
Size	Bank 0	Bank 1	Bank 2	Bank 3
8MB	(2) 1M x 36	None	None	None
16MB	(2) 2M x 36	None	None	None
16MB	(2) 1M x 36	(2) 1M x 36	None	None
24MB	(2) 2M x 36	(2) 1M x 36	None	None
24MB	(2) 1M x 36	(2) 1M x 36	(2) 1M x 36	None
32MB	(2) 4M x 36	None	None	None
32MB	(2) 2M x 36	(2) 2M x 36	None	None
32MB	(2) 2M x 36	(2) 1M x 36	(2) 1M x 36	None
32MB	(2) 1M x 36	(2) 1M x 36	(2) 1M x 36	(2) 1M x 36
40MB	(2) 4M x 36	(2) 1M x 36	None	None
40MB	(2) 2M x 36	(2) 2M x 36	(2) 1M x 36	None
40MB	(2) 2M x 36	(2) 1M x 36	(2) 1M x 36	(2) 1M x 36
48MB	(2) 4M x 36	(2) 2M x 36	None	None
48MB	(2) 4M x 36	(2) 1M x 36	(2) 1M x 36	None
48MB	(2) 2M x 36	(2) 2M x 36	(2) 2M x 36	None
48MB	(2) 2M x 36	(2) 2M x 36	(2) 1M x 36	(2) 1M x 36
56MB	(2) 4M x 36	(2) 2M x 36	(2) 1M x 36	None
56MB	(2) 4M x 36	(2) 1M x 36	(2) 1M x 36	(2) 1M x 36
56MB	(2) 2M x 36	(2) 2M x 36	(2) 2M x 36	(2) 1M x 36

Continued on next page...

DELL COMPUTER CORPORATION

OPTIPLEX DGX

... continued from previous page

DRAM CONFIGURATION (CON'T)				
Size	Bank 0	Bank 1	Bank 2	Bank 3
64MB	(2) 8M x 36	None	None	None
64MB	(2) 4M x 36	(2) 4M x 36	None	None
64MB	(2) 4M x 36	(2) 2M x 36	(2) 2M x 36	None
64MB	(2) 4M x 36	(2) 2M x 36	(2) 1M x 36	(2) 1M x 36
64MB	(2) 2M x 36	(2) 2M x 36	(2) 2M x 36	(2) 2M x 36
72MB	(2) 8M x 36	(2) 1M x 36	None	None
72MB	(2) 4M x 36	(2) 4M x 36	(2) 1M x 36	None
72MB	(2) 4M x 36	(2) 2M x 36	(2) 2M x 36	(2) 1M x 36
80MB	(2) 8M x 36	(2) 2M x 36	None	None
80MB	(2) 8M x 36	(2) 1M x 36	(2) 1M x 36	None
80MB	(2) 4M x 36	(2) 4M x 36	(2) 2M x 36	None
80MB	(2) 4M x 36	(2) 4M x 36	(2) 1M x 36	(2) 1M x 36
80MB	(2) 4M x 36	(2) 2M x 36	(2) 2M x 36	(2) 2M x 36
88MB	(2) 8M x 36	(2) 2M x 36	(2) 1M x 36	None
88MB	(2) 8M x 36	(2) 1M x 36	(2) 1M x 36	(2) 1M x 36
88MB	(2) 4M x 36	(2) 4M x 36	(2) 2M x 36	(2) 1M x 36
96MB	(2) 8M x 36	(2) 4M x 36	None	None
96MB	(2) 8M x 36	(2) 2M x 36	(2) 2M x 36	None
96MB	(2) 8M x 36	(2) 2M x 36	(2) 1M x 36	(2) 1M x 36
96MB	(2) 4M x 36	(2) 4M x 36	(2) 4M x 36	None
96MB	(2) 4M x 36	(2) 4M x 36	(2) 2M x 36	(2) 2M x 36
104MB	(2) 8M x 36	(2) 4M x 36	(2) 1M x 36	None
104MB	(2) 8M x 36	(2) 2M x 36	(2) 2M x 36	(2) 1M x 36
104MB	(2) 4M x 36	(2) 4M x 36	(2) 4M x 36	(2) 1M x 36
112MB	(2) 8M x 36	(2) 4M x 36	(2) 2M x 36	None
112MB	(2) 8M x 36	(2) 4M x 36	(2) 1M x 36	(2) 1M x 36
112MB	(2) 8M x 36	(2) 2M x 36	(2) 2M x 36	(2) 2M x 36
112MB	(2) 4M x 36	(2) 4M x 36	(2) 4M x 36	(2) 2M x 36
120MB	(2) 8M x 36	(2) 4M x 36	(2) 2M x 36	(2) 1M x 36
128MB	(2) 16M x 36	None	None	None
128MB	(2) 8M x 36	(2) 8M x 36	None	None
128MB	(2) 8M x 36	(2) 4M x 36	(2) 4M x 36	None
128MB	(2) 8M x 36	(2) 4M x 36	(2) 2M x 36	(2) 2M x 36
128MB	(2) 4M x 36	(2) 4M x 36	(2) 4M x 36	(2) 4M x 36
136MB	(2) 16M x 36	(2) 1M x 36	None	None
136MB	(2) 8M x 36	(2) 8M x 36	(2) 1M x 36	None
136MB	(2) 8M x 36	(2) 4M x 36	(2) 4M x 36	(2) 1M x 36
144MB	(2) 16M x 36	(2) 2M x 36	None	None
144MB	(2) 16M x 36	(2) 1M x 36	(2) 1M x 36	None
144MB	(2) 8M x 36	(2) 8M x 36	(2) 2M x 36	None
144MB	(2) 8M x 36	(2) 8M x 36	(2) 1M x 36	(2) 1M x 36
144MB	(2) 8M x 36	(2) 4M x 36	(2) 4M x 36	(2) 2M x 36

Continued on next page...

DELL COMPUTER CORPORATION OPTIPLEX DGX

... continued from previous page

DRAM CONFIGURATION (CON'T)				
Size	Bank 0	Bank 1	Bank 2	Bank 3
152MB	(2) 16M x 36	(2) 2M x 36	(2) 1M x 36	None
152MB	(2) 16M x 36	(2) 1M x 36	(2) 1M x 36	(2) 1M x 36
152MB	(2) 8M x 36	(2) 8M x 36	(2) 2M x 36	(2) 1M x 36
160MB	(2) 16M x 36	(2) 4M x 36	None	None
160MB	(2) 16M x 36	(2) 2M x 36	(2) 2M x 36	None
160MB	(2) 16M x 36	(2) 2M x 36	(2) 1M x 36	(2) 1M x 36
160MB	(2) 8M x 36	(2) 8M x 36	(2) 4M x 36	None
160MB	(2) 8M x 36	(2) 8M x 36	(2) 2M x 36	(2) 2M x 36
160MB	(2) 8M x 36	(2) 4M x 36	(2) 4M x 36	(2) 4M x 36
168MB	(2) 16M x 36	(2) 4M x 36	(2) 1M x 36	None
168MB	(2) 16M x 36	(2) 2M x 36	(2) 2M x 36	(2) 1M x 36
168MB	(2) 8M x 36	(2) 8M x 36	(2) 4M x 36	(2) 1M x 36
176MB	(2) 16M x 36	(2) 4M x 36	(2) 2M x 36	None
176MB	(2) 16M x 36	(2) 4M x 36	(2) 1M x 36	(2) 1M x 36
176MB	(2) 16M x 36	(2) 2M x 36	(2) 2M x 36	(2) 2M x 36
176MB	(2) 8M x 36	(2) 8M x 36	(2) 4M x 36	(2) 2M x 36
184MB	(2) 16M x 36	(2) 4M x 36	(2) 2M x 36	(2) 1M x 36
192MB	(2) 16M x 36	(2) 8M x 36	None	None
192MB	(2) 16M x 36	(2) 4M x 36	(2) 4M x 36	None
192MB	(2) 16M x 36	(2) 4M x 36	(2) 2M x 36	(2) 2M x 36
192MB	(2) 8M x 36	(2) 8M x 36	(2) 8M x 36	None
192MB	(2) 8M x 36	(2) 8M x 36	(2) 4M x 36	(2) 4M x 36
200MB	(2) 16M x 36	(2) 8M x 36	(2) 1M x 36	None
200MB	(2) 16M x 36	(2) 4M x 36	(2) 4M x 36	(2) 1M x 36
200MB	(2) 8M x 36	(2) 8M x 36	(2) 8M x 36	(2) 1M x 36
208MB	(2) 16M x 36	(2) 8M x 36	(2) 2M x 36	None
208MB	(2) 16M x 36	(2) 8M x 36	(2) 1M x 36	(2) 1M x 36
208MB	(2) 16M x 36	(2) 4M x 36	(2) 4M x 36	(2) 2M x 36
208MB	(2) 8M x 36	(2) 8M x 36	(2) 8M x 36	(2) 2M x 36
216MB	(2) 16M x 36	(2) 8M x 36	(2) 2M x 36	(2) 1M x 36
224MB	(2) 16M x 36	(2) 8M x 36	(2) 4M x 36	None
224MB	(2) 16M x 36	(2) 8M x 36	(2) 2M x 36	(2) 2M x 36
224MB	(2) 16M x 36	(2) 4M x 36	(2) 4M x 36	(2) 4M x 36
224MB	(2) 8M x 36	(2) 8M x 36	(2) 8M x 36	(2) 4M x 36
232MB	(2) 16M x 36	(2) 8M x 36	(2) 4M x 36	(2) 1M x 36
240MB	(2) 16M x 36	(2) 8M x 36	(2) 4M x 36	(2) 2M x 36
256MB	(2) 16M x 36	(2) 16M x 36	None	None
256MB	(2) 16M x 36	(2) 8M x 36	(2) 8M x 36	None
256MB	(2) 16M x 36	(2) 8M x 36	(2) 4M x 36	(2) 4M x 36
256MB	(2) 8M x 36	(2) 8M x 36	(2) 8M x 36	(2) 8M x 36
264MB	(2) 16M x 36	(2) 16M x 36	(2) 1M x 36	None
264MB	(2) 16M x 36	(2) 8M x 36	(2) 8M x 36	(2) 1M x 36

Continued on next page...

DELL COMPUTER CORPORATION

OPTIPLEX DGX

... continued from previous page

DRAM CONFIGURATION (CON'T)				
Size	Bank 0	Bank 1	Bank 2	Bank 3
272MB	(2) 16M x 36	(2) 16M x 36	(2) 2M x 36	None
272MB	(2) 16M x 36	(2) 16M x 36	(2) 1M x 36	(2) 1M x 36
272MB	(2) 16M x 36	(2) 8M x 36	(2) 8M x 36	(2) 2M x 36
280MB	(2) 16M x 36	(2) 16M x 36	(2) 2M x 36	(2) 1M x 36
288MB	(2) 16M x 36	(2) 16M x 36	(2) 4M x 36	None
288MB	(2) 16M x 36	(2) 16M x 36	(2) 2M x 36	(2) 2M x 36
288MB	(2) 16M x 36	(2) 8M x 36	(2) 8M x 36	(2) 4M x 36
296MB	(2) 16M x 36	(2) 16M x 36	(2) 4M x 36	(2) 1M x 36
304MB	(2) 16M x 36	(2) 16M x 36	(2) 4M x 36	(2) 2M x 36
320MB	(2) 16M x 36	(2) 16M x 36	(2) 8M x 36	None
320MB	(2) 16M x 36	(2) 16M x 36	(2) 4M x 36	(2) 4M x 36
320MB	(2) 16M x 36	(2) 8M x 36	(2) 8M x 36	(2) 8M x 36
328MB	(2) 16M x 36	(2) 16M x 36	(2) 8M x 36	(2) 1M x 36
336MB	(2) 16M x 36	(2) 16M x 36	(2) 8M x 36	(2) 2M x 36
352MB	(2) 16M x 36	(2) 16M x 36	(2) 8M x 36	(2) 4M x 36
384MB	(2) 16M x 36	(2) 16M x 36	(2) 16M x 36	None
384MB	(2) 16M x 36	(2) 16M x 36	(2) 8M x 36	(2) 8M x 36
392MB	(2) 16M x 36	(2) 16M x 36	(2) 16M x 36	(2) 1M x 36
400MB	(2) 16M x 36	(2) 16M x 36	(2) 16M x 36	(2) 2M x 36
416MB	(2) 16M x 36	(2) 16M x 36	(2) 16M x 36	(2) 4M x 36
448MB	(2) 16M x 36	(2) 16M x 36	(2) 16M x 36	(2) 8M x 36
512MB	(2) 16M x 36	(2) 16M x 36	(2) 16M x 36	(2) 16M x 36

CACHE CONFIGURATION	
Size	SL1
256KB	256KB module installed
512KB	512KB module installed

VIDEO MEMORY CONFIGURATION		
Size	Bank 0	Bank 1
512KB	512KB	None
2MB	512KB	(6) 256K x 8

Note: Bank 0 is factory installed and is not configurable.

CPU SPEED SELECTION		
Speed	JP7	JP8
90MHz	Closed	Open
100MHz	Open	Closed
120MHz	Closed	Open
133MHz	Open	Closed
166MHz	Open	Closed