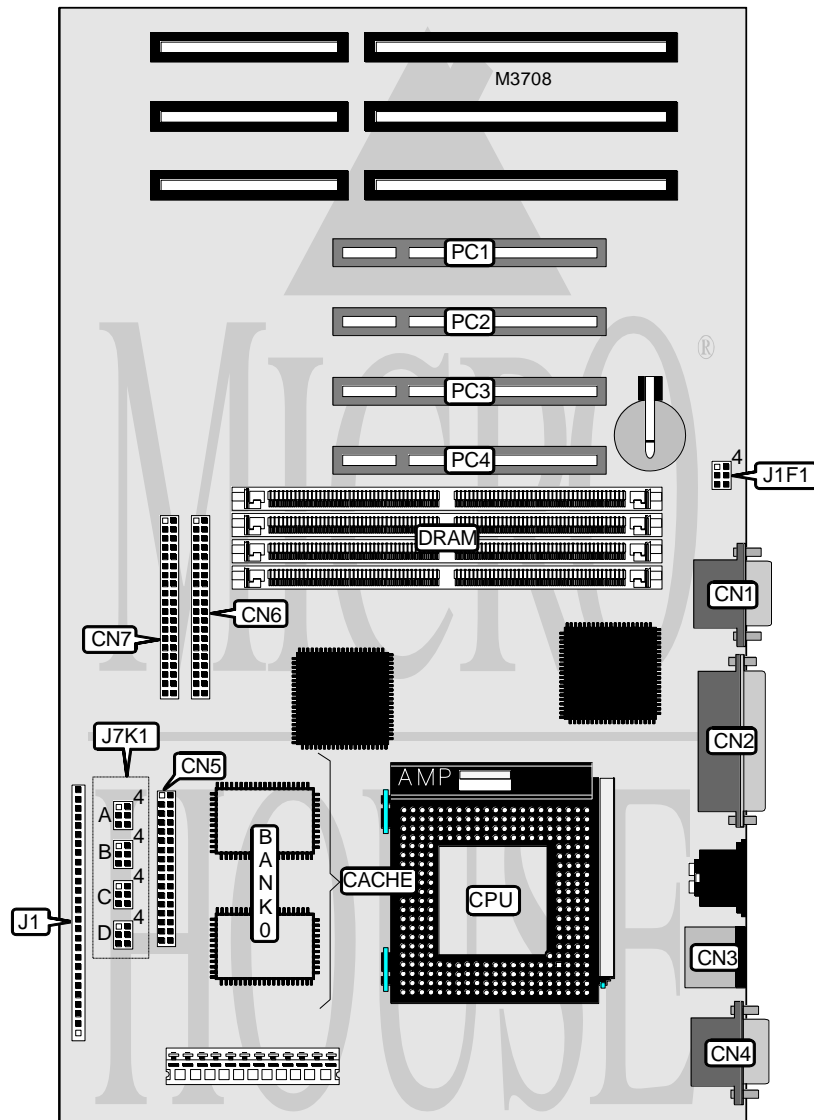


INTEL CORPORATION ADVANCED/ML

Processor	Pentium
Processor Speed	75/90/100/120/133/150/166MHz
Chip Set	Intel
Video Chip Set	None
Maximum Onboard Memory	128MB (EDO supported)
Maximum Video Memory	None
Cache	256/512KB
BIOS	Phoenix
Dimensions	304mm x 178mm
I/O Options	32-bit PCI slots (4), floppy drive interface, green PC connector, IDE interfaces (2), parallel port, PS/2 mouse port, serial ports (2), IR connector
NPU Options	None



Continued on next page. . .

INTEL CORPORATION ADVANCED/ML

... continued from previous page

CONNECTIONS			
Purpose	Location	Purpose	Location
Serial port 1	CN1	Reset switch	J1 pins 4 & 5
Parallel port	CN2	Power LED & keylock	J1 pins 6 - 10
PS/2 mouse port	CN3	IDE interface LED	J1 pins 11 - 14
Serial port 2	CN4	Green PC connector	J1 pins 15 - 19
Floppy drive interface	CN5	IR connector	J1 pins 20 - 25
IDE interface 1	CN6	Speaker	J1 pins 26 - 29
IDE interface 2	CN7	32-bit PCI slots	PC1 - PC4
Chassis fan power	J1 pins 1 - 3		

USER CONFIGURABLE SETTINGS		
Function	Label	Position
í Flash BIOS normal operation	J1F1	Pins 1 & 2 closed
Flash BIOS recovery mode	J1F1	Pins 2 & 3 closed
í Flash BIOS write protect enabled	J1F1	Pins 4 & 5 closed
Flash BIOS write protect disabled	J1F1	Pins 5 & 6 closed
í Password normal operation	J7K1A	Pins 1 & 2 closed
Password clear	J7K1A	Pins 2 & 3 closed
í CMOS memory normal operation	J7K1A	Pins 4 & 5 closed
CMOS memory clear	J7K1A	Pins 5 & 6 closed
í Setup access enabled	J7K1B	Pins 1 & 2 closed
Setup access disabled	J7K1B	Pins 2 & 3 closed

DRAM CONFIGURATION		
Size	Bank 0	Bank 1
8MB	(2) 1M x 36	None
16MB	(2) 2M x 36	None
16MB	(2) 1M x 36	(2) 1M x 36
24MB	(2) 2M x 36	(2) 1M x 36
32MB	(2) 4M x 36	None
32MB	(2) 2M x 36	(2) 2M x 36
40MB	(2) 4M x 36	(2) 1M x 36
48MB	(2) 4M x 36	(2) 2M x 36
64MB	(2) 8M x 36	None
64MB	(2) 4M x 36	(2) 4M x 36
72MB	(2) 8M x 36	(2) 1M x 36
80MB	(2) 8M x 36	(2) 2M x 36
96MB	(2) 8M x 36	(2) 4M x 36
128MB	(2) 8M x 36	(2) 8M x 36
128MB	(2) 16M x 36	None

Note: Board accepts EDO memory. Board also accepts x 32 SIMMs. The location of banks 0 & 1 are unidentified.

Continued on next page. . .

INTEL CORPORATION ADVANCED/ML

... continued from previous page

CACHE CONFIGURATION	
Size	Bank 0
256KB	(2) 32K x 32
512KB	(2) 64K x 32

Note: Board comes from the factory with 256KB or 512KB cache installed.

CPU SPEED SELECTION				
CPU speed	Clock speed	Multiplier	J7K1C	J7K1D
75MHz	50MHz	1.5x	2 & 3, 5 & 6	1 & 2, 4 & 5
90MHz	60MHz	1.5x	2 & 3, 4 & 5	1 & 2, 4 & 5
100MHz	66MHz	1.5x	1 & 2, 5 & 6	1 & 2, 4 & 5
120MHz	60MHz	2x	2 & 3, 4 & 5	2 & 3, 4 & 5
133MHz	66MHz	2x	1 & 2, 5 & 6	2 & 3, 4 & 5
150MHz	60MHz	2.5x	2 & 3, 4 & 5	2 & 3, 5 & 6
166MHz	66MHz	2.5x	1 & 2, 5 & 6	2 & 3, 5 & 6

Note: Pins designated should be in the closed position.

CPU TYPE SELECTION	
Type	J7K1B
OVD	Pins 5 & 6 closed
í VRE	Pins 4 & 5 closed