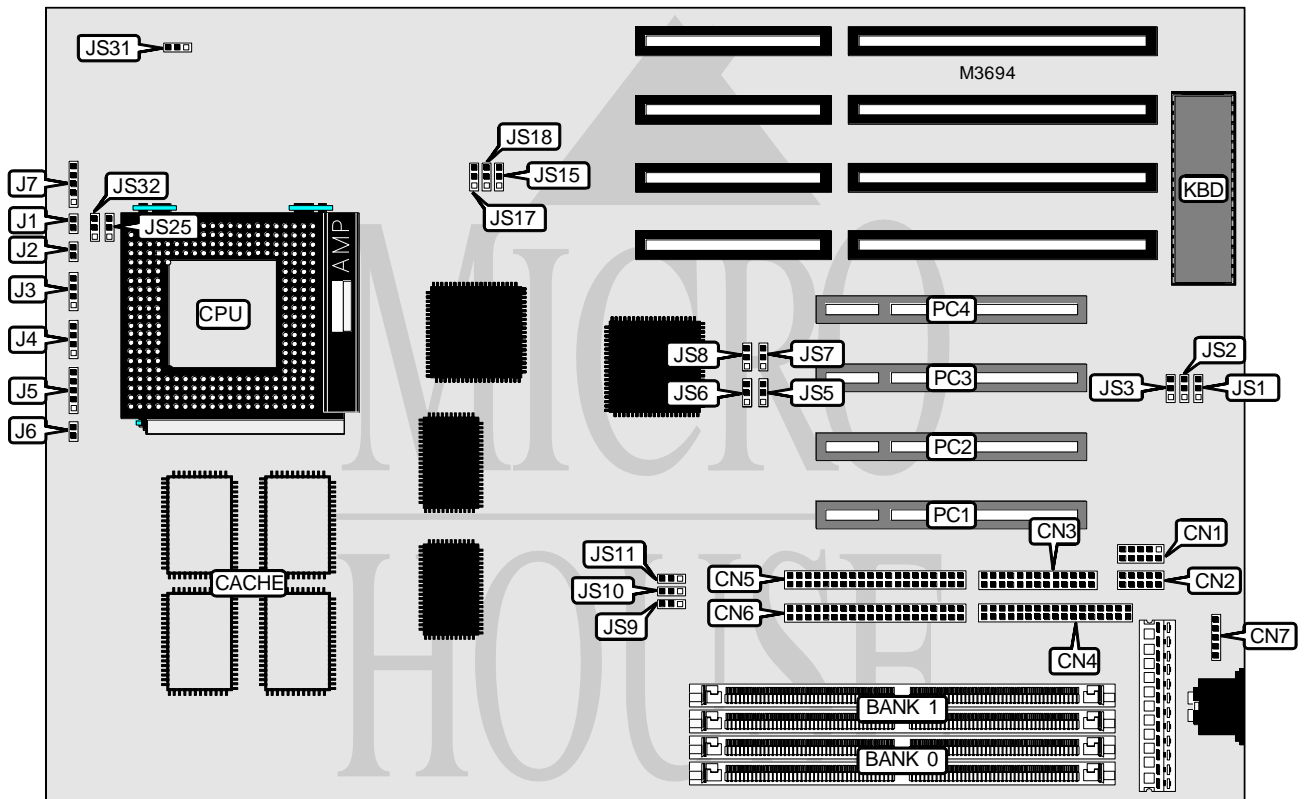


# ADVANCED INTEGRATION RESEARCH, INC.

## 54CPI (REV. 3.00)

<b>Processor</b>	Pentium
<b>Processor Speed</b>	75/90/100/120/133/150/166MHz
<b>Chip Set</b>	Intel
<b>Video Chip Set</b>	None
<b>Maximum Onboard Memory</b>	128MB (EDO supported)
<b>Maximum Video Memory</b>	None
<b>Cache</b>	256/512KB
<b>BIOS</b>	Unidentified
<b>Dimensions</b>	330mm x 222mm
<b>I/O Options</b>	32-bit PCI slots (4), floppy drive interface, green PC connector, IDE interfaces (2), parallel port, PS/2 mouse interface, serial ports (2), IR connector
<b>NPU Options</b>	None



Continued on next page . . .

**ADVANCED INTEGRATION RESEARCH, INC.**  
**54CPI (REV. 3.00)**

... continued from previous page

CONNECTIONS			
Purpose	Location	Purpose	Location
Serial port 1	CN1	Reset switch	J2
Serial port 2	CN2	Speaker	J3
Parallel port	CN3	IDE interface LED	J4
Floppy drive interface	CN4	Power LED & keylock	J5
IDE interface 2	CN5	Turbo LED	J6
IDE interface 1	CN6	IR connector	J7
PS/2 mouse interface	CN7	32-bit PCI slots	PC1 - PC4
Green PC connector	J1		

USER CONFIGURABLE SETTINGS		
Function	Label	Position
í Factory configured - do not alter	JS3	Unidentified
í Parallel port IRQ select IRQ7	JS5	Pins 1 & 2 closed
Parallel port IRQ select IRQ5	JS5	Pins 2 & 3 closed
í Monitor type select monochrome/EGA/VGA	JS15	Pins 2 & 3 closed
Monitor type select CGA	JS15	Pins 1 & 2 closed
í Flash BIOS voltage select 12v	JS17	Pins 1 & 2 closed
Flash BIOS voltage select 5v	JS17	Pins 2 & 3 closed
í CMOS memory normal operation	JS18	Pins 1 & 2 closed
CMOS memory clear	JS18	Pins 2 & 3 closed

DRAM CONFIGURATION		
Size	Bank 0	Bank 1
8MB	(2) 1M x 36	None
16MB	(2) 2M x 36	None
16MB	(2) 1M x 36	(2) 1M x 36
24MB	(2) 1M x 36	(2) 2M x 36
32MB	(2) 4M x 36	None
32MB	(2) 2M x 36	(2) 2M x 36
40MB	(2) 1M x 36	(2) 4M x 36
48MB	(2) 2M x 36	(2) 4M x 36
64MB	(2) 8M x 36	None
64MB	(2) 4M x 36	(2) 4M x 36
72MB	(2) 1M x 36	(2) 8M x 36
80MB	(2) 2M x 36	(2) 8M x 36
96MB	(2) 4M x 36	(2) 8M x 36
128MB	(2) 8M x 36	(2) 8M x 36

Note: Board accepts EDO memory. Board also accepts x 32 SIMMs.

Continued on next page...

# ADVANCED INTEGRATION RESEARCH, INC.

## 54CPI (REV. 3.00)

... continued from previous page

CACHE CONFIGURATION		
Size	Bank 0	Bank 1
256KB	(2) 32K x 32	None
512KB	(2) 32K x 32	(2) 32K x 32

Note: The location of banks 0 & 1 are unidentified.

CPU SPEED SELECTION							
CPU speed	Clock speed	Multiplier	JS9	JS10	JS11	JS25	JS32
75MHz	50MHz	1.5x	1 & 2	2 & 3	1 & 2	1 & 2	1 & 2
90MHz	60MHz	1.5x	1 & 2	1 & 2	2 & 3	1 & 2	1 & 2
100MHz	66MHz	1.5x	2 & 3	2 & 3	2 & 3	1 & 2	1 & 2
120MHz	60MHz	2x	1 & 2	1 & 2	2 & 3	1 & 2	2 & 3
133MHz	66MHz	2x	2 & 3	2 & 3	2 & 3	1 & 2	2 & 3
150MHz	60MHz	2.5x	1 & 2	1 & 2	2 & 3	2 & 3	2 & 3
166MHz	66MHz	2.5x	2 & 3	2 & 3	2 & 3	2 & 3	2 & 3

Note: Pins designated should be in the closed position.

CPU VOLTAGE SELECTION	
Voltage	JS31
iSTD/VR	Pins 2 & 3 closed
VRE	Pins 1 & 2 closed

DMA CHANNEL SELECTION			
Channel	JS1	JS7	JS8
í Normal	Pins 2 & 3 closed	Open	Open
1	Pins 1 & 2 closed	Pins 2 & 3 closed	Pins 2 & 3 closed
3	Pins 1 & 2 closed	Pins 1 & 2 closed	Pins 1 & 2 closed

FLOPPY DRIVE SELECTION		
Setting	JS2	JS6
í Normal	Pins 2 & 3 closed	Open
Enhanced	Pins 1 & 2 closed	Pins 2 & 3 closed