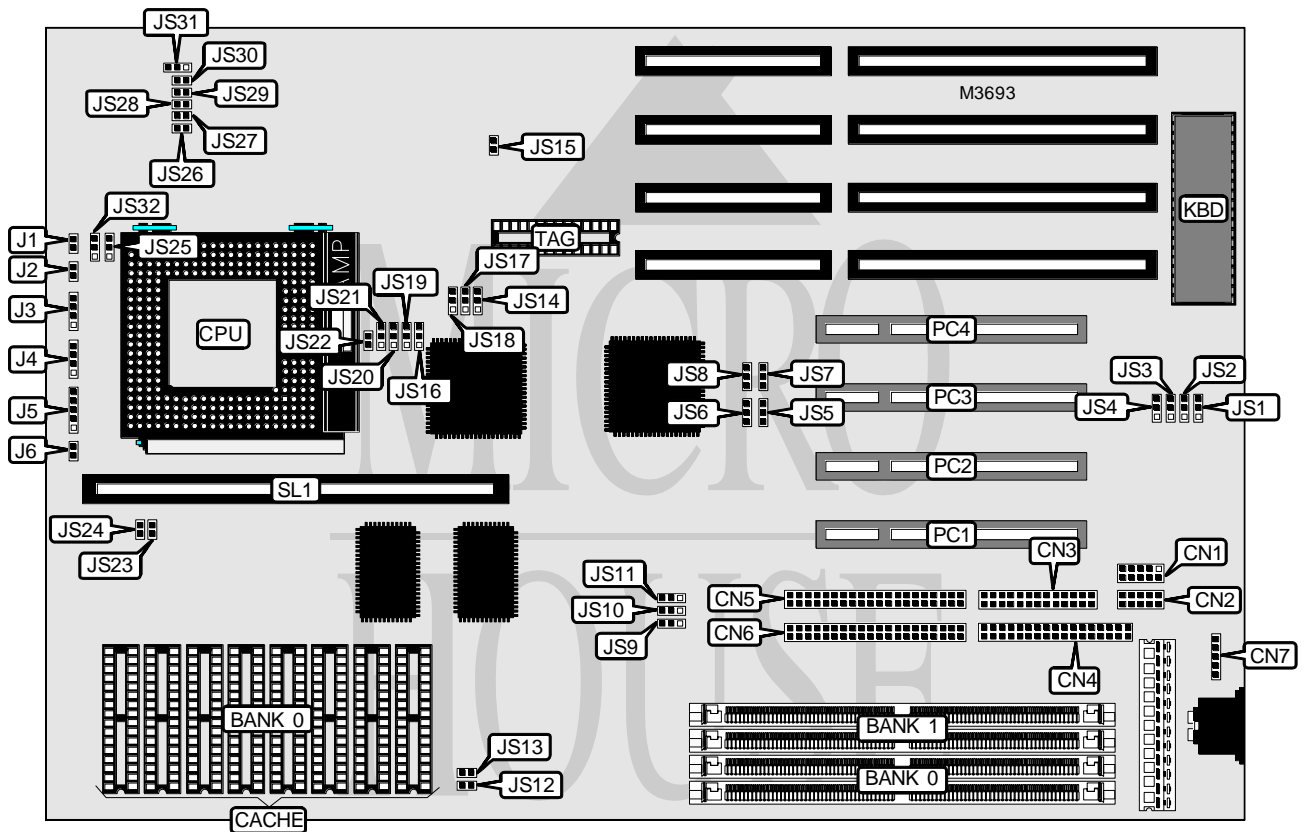


ADVANCED INTEGRATION RESEARCH, INC.

54CPI (REV. 2.10)

Processor	Pentium
Processor Speed	75/90/100/120/133/150/166MHz
Chip Set	Intel
Video Chip Set	None
Maximum Onboard Memory	128MB (EDO supported)
Maximum Video Memory	None
Cache	256/512KB
BIOS	AMI
Dimensions	305mm x 220mm
I/O Options	32-bit PCI slots (4), floppy drive interface, green PC connector, IDE interfaces (2), parallel port, PS/2 mouse interface, serial ports (2), cache slot
NPU Options	None



Continued on next page . . .

ADVANCED INTEGRATION RESEARCH, INC.
54CPI (REV. 2.10)

... continued from previous page

CONNECTIONS			
Purpose	Location	Purpose	Location
Serial port 1	CN1	Reset switch	J2
Serial port 2	CN2	Speaker	J3
Parallel port	CN3	IDE interface LED	J4
Floppy drive interface	CN4	Power LED & keylock	J5
IDE interface 2	CN5	Turbo LED	J6
IDE interface 1	CN6	Cache slot	SL1
PS/2 mouse interface	CN7	32-bit PCI slots	PC1 - PC4
Green PC connector	J1		

USER CONFIGURABLE SETTINGS		
Function	Label	Position
í Parallel port IRQ select IRQ7	JS5	Pins 1 & 2 closed
Parallel port IRQ select IRQ5	JS5	Pins 2 & 3 closed
	JS14	Unidentified
í Monitor type select monochrome/EGA/VGA	JS15	Open
Monitor type select CGA	JS15	Closed
í Flash BIOS voltage select 12v	JS17	Pins 1 & 2 closed
Flash BIOS voltage select 5v	JS17	Pins 2 & 3 closed
í CMOS memory normal operation	JS18	Pins 1 & 2 closed
CMOS memory clear	JS18	Pins 2 & 3 closed
í Pipeline cache mode disabled	JS22	Open
Pipeline cache mode enabled	JS22	Closed
í Factory configured - do not alter	JS26	Closed
í Factory configured - do not alter	JS27	Closed
í Factory configured - do not alter	JS28	Closed
í Factory configured - do not alter	JS29	Closed
í Factory configured - do not alter	JS30	Closed

DRAM CONFIGURATION		
Size	Bank 0	Bank 1
2MB	(2) 256K x 36	None
4MB	(2) 256K x 36	(2) 256K x 36
4MB	(2) 512K x 36	None
6MB	(2) 512K x 36	(2) 256K x 36
8MB	(2) 1M x 36	None
10MB	(2) 256K x 36	(2) 1M x 36
12MB	(2) 512K x 36	(2) 1M x 36
16MB	(2) 2M x 36	None
16MB	(2) 1M x 36	(2) 1M x 36
18MB	(2) 256K x 36	(2) 2M x 36
20MB	(2) 512K x 36	(2) 2M x 36
24MB	(2) 2M x 36	(2) 1M x 36

Continued on next page...

ADVANCED INTEGRATION RESEARCH, INC.
54CPI (REV. 2.10)

... continued from previous page

DRAM CONFIGURATION (CON'T)		
Size	Bank 0	Bank 1
32MB	(2) 4M x 36	None
32MB	(2) 2M x 36	(2) 2M x 36
34MB	(2) 256K x 36	(2) 4M x 36
36MB	(2) 512K x 36	(2) 4M x 36
40MB	(2) 4M x 36	(2) 1M x 36
48MB	(2) 4M x 36	(2) 2M x 36
64MB	(2) 8M x 36	None
64MB	(2) 4M x 36	(2) 4M x 36
66MB	(2) 256K x 36	(2) 8M x 36
68MB	(2) 512K x 36	(2) 8M x 36
72MB	(2) 8M x 36	(2) 1M x 36
80MB	(2) 8M x 36	(2) 2M x 36
96MB	(2) 8M x 36	(2) 4M x 36
128MB	(2) 8M x 36	(2) 8M x 36

Note: Board accepts EDO memory. Board also accepts x 32 SIMMs.

CACHE CONFIGURATION			
Size	Bank 0	TAG	SL1
256KB (A)	(8) 32K x 8	(1) 32K x 8	Not installed
256KB (B)	None	None	256KB module installed
512KB (A)	(8) 64K x 8	(1) 32K x 8	Not installed
512KB (B)	None	None	512KB module installed

CACHE JUMPER CONFIGURATION				
Size	JS16	JS19	JS20	JS21
256KB (A)	Pins 1 & 2 closed	Pins 2 & 3 closed	Pins 1 & 2 closed	Pins 1 & 2 closed
256KB (B)	Pins 2 & 3 closed	Pins 2 & 3 closed	Pins 2 & 3 closed	Pins 2 & 3 closed
512KB (A)	Pins 2 & 3 closed	Pins 1 & 2 closed	Pins 1 & 2 closed	Pins 2 & 3 closed
512KB (B)	Pins 2 & 3 closed	Pins 2 & 3 closed	Pins 2 & 3 closed	Pins 2 & 3 closed

CACHE VOLTAGE CONFIGURATION				
Voltage	JS12	JS13	JS23	JS24
í Mixed	Closed	Closed	Open	Open
3.3v	Open	Open	Closed	Closed

Continued on next page...

ADVANCED INTEGRATION RESEARCH, INC.
54CPI (REV. 2.10)

... continued from previous page

CPU SPEED SELECTION							
CPU speed	Clock speed	Multiplier	JS9	JS10	JS11	JS25	JS32
75MHz	50MHz	1.5x	1 & 2	2 & 3	1 & 2	1 & 2	1 & 2
90MHz	60MHz	1.5x	1 & 2	1 & 2	2 & 3	1 & 2	1 & 2
100MHz	66MHz	1.5x	2 & 3	2 & 3	2 & 3	1 & 2	1 & 2
120MHz	60MHz	2x	1 & 2	1 & 2	2 & 3	1 & 2	2 & 3
133MHz	66MHz	2x	2 & 3	2 & 3	2 & 3	1 & 2	2 & 3
150MHz	60MHz	2.5x	1 & 2	1 & 2	2 & 3	2 & 3	2 & 3
166MHz	66MHz	2.5x	2 & 3	2 & 3	2 & 3	2 & 3	2 & 3

Note: Pins designated should be in the closed position.

CPU VOLTAGE SELECTION	
Voltage	JS31
íSTD/VR	Pins 2 & 3 closed
VRE	Pins 1 & 2 closed

DMA CHANNEL SELECTION			
Channel	JS1	JS7	JS8
í Normal	Open	Open	Open
1	Closed	Pins 2 & 3 closed	Pins 2 & 3 closed
3	Closed	Pins 1 & 2 closed	Pins 1 & 2 closed

FLOPPY DRIVE SELECTION		
Setting	JS2	JS6
í Normal	Open	Open
Enhanced	Closed	Pins 2 & 3 closed

SERIAL PORT SELECTION		
Setting	JS3	JS4
Used as COM2	Pins 1 & 2 closed	Pins 1 & 2 closed
Used as IR connector	Pins 2 & 3 closed	Pins 2 & 3 closed