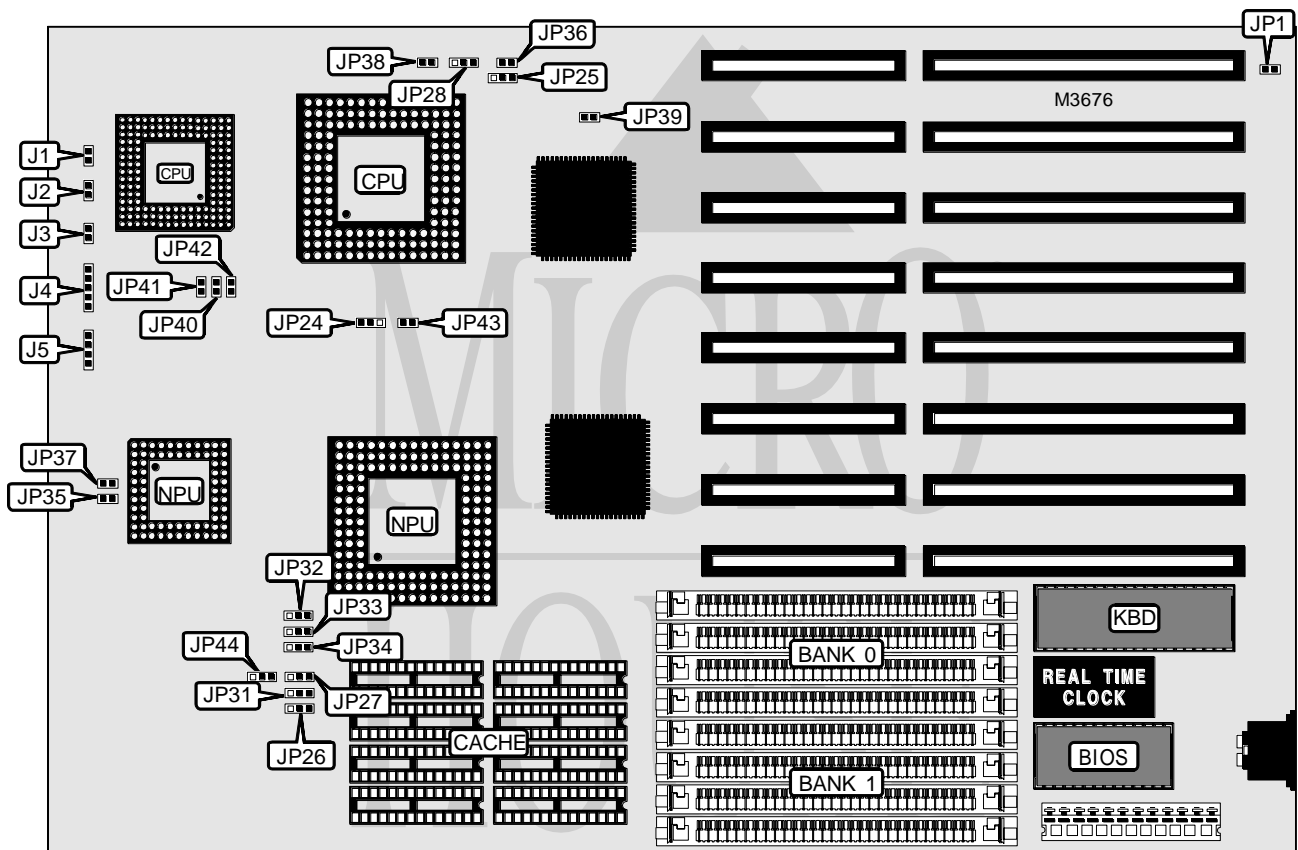


YOUNG MICRO SYSTEMS VS3486F (REV. 2.0)

Processor	80386DX/80486SX/80487SX/CX486DLC/80486DX/80486DX2
Processor Speed	25/33/50(internal)/50/66(internal)MHz
Chip Set	Symphony
Video Chip Set	None
Maximum Onboard Memory	32MB
Maximum Video Memory	None
Cache	64/256KB
BIOS	AMI
Dimensions	330mm x 218mm
I/O Options	None
NPU Options	80387DX/4167



CONNECTIONS			
Purpose	Location	Purpose	Location
Turbo switch	J1	Power LED & keylock	J4
Turbo LED	J2	Speaker	J5
Reset switch	J3		

Continued on next page . . .

YOUNG MICRO SYSTEMS VS3486F (REV. 2.0)

... continued from previous page

USER CONFIGURABLE SETTINGS		
Function	Label	Position
í Factory configured - do not alter	JP1	Unidentified

DRAM CONFIGURATION		
Size	Bank 0	Bank 1
1MB	(4) 256K x 9	None
2MB	(4) 256K x 9	(4) 256K x 9
4MB	(4) 1M x 9	None
5MB	(4) 1M x 9	(4) 256K x 9
8MB	(4) 1M x 9	(4) 1M x 9
16MB	(4) 4M x 9	None
17MB	(4) 4M x 9	(4) 256K x 9
20MB	(4) 4M x 9	(4) 1M x 9
32MB	(4) 4M x 9	(4) 4M x 9

CACHE CONFIGURATION		
Size	Bank 0	Bank 1
64KB	(4) 8K x 8	(4) 8K x 8
256KB	(4) 32K x 8	(4) 32K x 8

Note: The location of banks 0 & 1 are unidentified.

CACHE JUMPER CONFIGURATION			
Size	JP26	JP27	JP31
64KB	Pins 2 & 3 closed	Pins 2 & 3 closed	Pins 2 & 3 closed
256KB	Pins 1 & 2 closed	Pins 1 & 2 closed	Pins 1 & 2 closed

CPU TYPE SELECTION				
Type	JP24	JP25	JP28	JP32
80368DX	2 & 3	2 & 3	2 & 3	2 & 3
CX486DLC	2 & 3	2 & 3	2 & 3	2 & 3
80486SX	2 & 3	1 & 2	1 & 2	1 & 2
80486DX-25/33	2 & 3	1 & 2	1 & 2	1 & 2
80486DX-50	1 & 2	1 & 2	1 & 2	1 & 2
80486DX2	2 & 3	1 & 2	1 & 2	1 & 2

Note: Pins designated should be in the closed position.

Continued on next page...

YOUNG MICRO SYSTEMS

VS3486F (REV. 2.0)

... continued from previous page

CPU TYPE SELECTION						
Type	JP33	JP34	JP35	JP36	JP37	JP38
80368DX	2 & 3	2 & 3	Closed	Closed	Open	Open
CX486DLC	2 & 3	2 & 3	Closed	Closed	Open	Open
80486SX	1 & 2	1 & 2	Open	Open	Open	Open
80486DX-25/33	1 & 2	1 & 2	Open	Open	Open	Open
80486DX-50	1 & 2	1 & 2	Open	Open	Closed	Closed
80486DX2	1 & 2	1 & 2	Open	Open	Open	Open

Note: Pins designated should be in the closed position.

CPU TYPE SELECTION						
Type	JP39	JP40	JP41	JP42	JP43	JP44
80368DX	Closed	Open	Open	Open	Open	2 & 3
CX486DLC	Closed	Open	Open	Open	Open	2 & 3
80486SX	Open	Open	Open	Open	Closed	1 & 2
80486DX-25/33	Open	Closed	Closed	Closed	Open	1 & 2
80486DX-50	Open	Closed	Closed	Closed	Open	1 & 2
80486DX2	Open	Closed	Closed	Closed	Open	1 & 2

Note: Pins designated should be in the closed position.