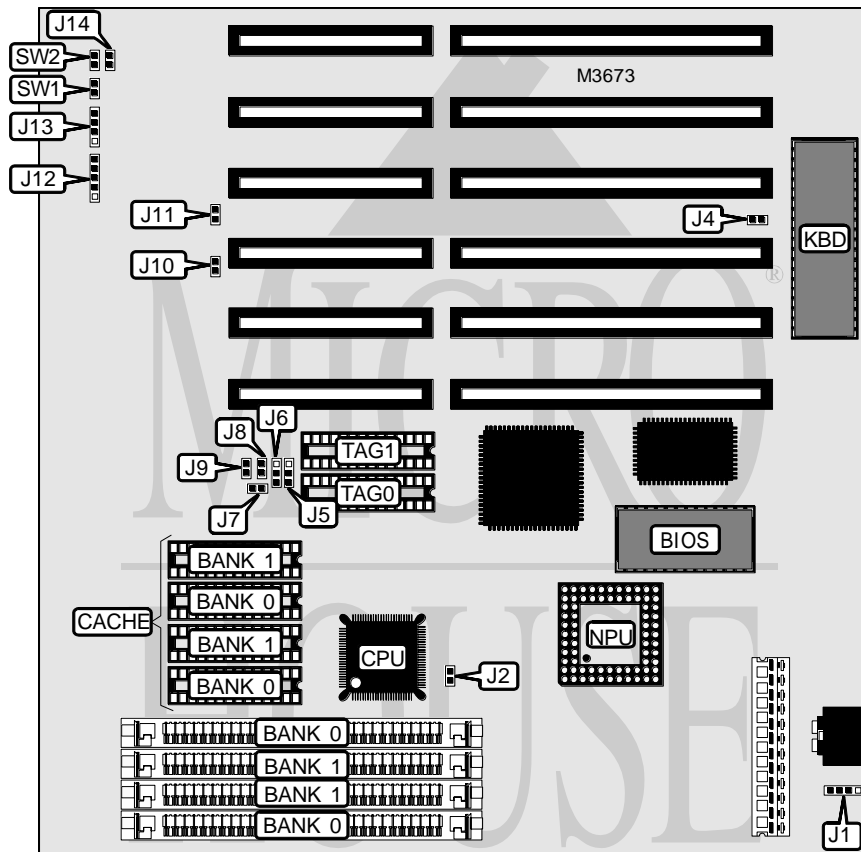


# ROBOTECH, INC. G M B - 3 8 6 S O P

<b>Processor</b>	AM386SX/CX486SLC
<b>Processor Speed</b>	25/33/40MHz
<b>Chip Set</b>	OPTI
<b>Video Chip Set</b>	None
<b>Maximum Onboard Memory</b>	16MB
<b>Maximum Video Memory</b>	None
<b>Cache</b>	16/32/64/128KB
<b>BIOS</b>	Unidentified
<b>Dimensions</b>	220mm x 220mm
<b>I/O Options</b>	None
<b>NPU Options</b>	80387SX



CONNECTIONS			
Purpose	Location	Purpose	Location
External battery	J1	Turbo LED	J14
Power LED & keylock	J12	Reset switch	SW1
Speaker	J13	Turbo switch	SW2

Continued on next page...

**ROBOTECH, INC.**  
**G M B - 3 8 6 S O P**

... continued from previous page

USER CONFIGURABLE SETTINGS		
Function	Label	Position
Battery type select internal	J1	Closed
Battery type select external	J1	Pins 2 & 3 closed
í Monitor type select color	J4	Closed
Monitor type select monochrome	J4	Open

DRAM CONFIGURATION		
Size	Bank 0	Bank 1
1MB	(2) 256K x 9	(2) 256K x 9
2MB	(2) 1M x 9	None
4MB	(2) 1M x 9	(2) 1M x 9
8MB	(2) 4M x 9	None
10MB	(2) 4M x 9	(2) 1M x 9
16MB	(2) 4M x 9	(2) 4M x 9

CACHE CONFIGURATION				
Size	Bank 0	Bank 1	TAG 0	TAG 1
16KB	(2) 8K x 8	None	(1) 8K x 8	None
32KB	(2) 8K x 8	(2) 8K x 8	(1) 8K x 8	None
64KB	(2) 32K x 8	None	(1) 8K x 8	None
128KB	(2) 32K x 8	(2) 32K x 8	(1) 8K x 8	(1) 8K x 8

CACHE JUMPER CONFIGURATION						
Size	J5	J6	J7	J8	J9	J10
16KB	2 & 3	2 & 3	Open	Open	Open	Open
32KB	2 & 3	2 & 3	Open	Open	Closed	Open
64KB	1 & 2	2 & 3	Open	Closed	Closed	Open
128KB	1 & 2	1 & 2	Closed	Closed	Closed	Closed

Note: Pins designated should be in the closed position.

CPU TYPE SELECTION		
Type	J2	J11
AM386SX	Open	Open
CX486SLC	Closed	Closed