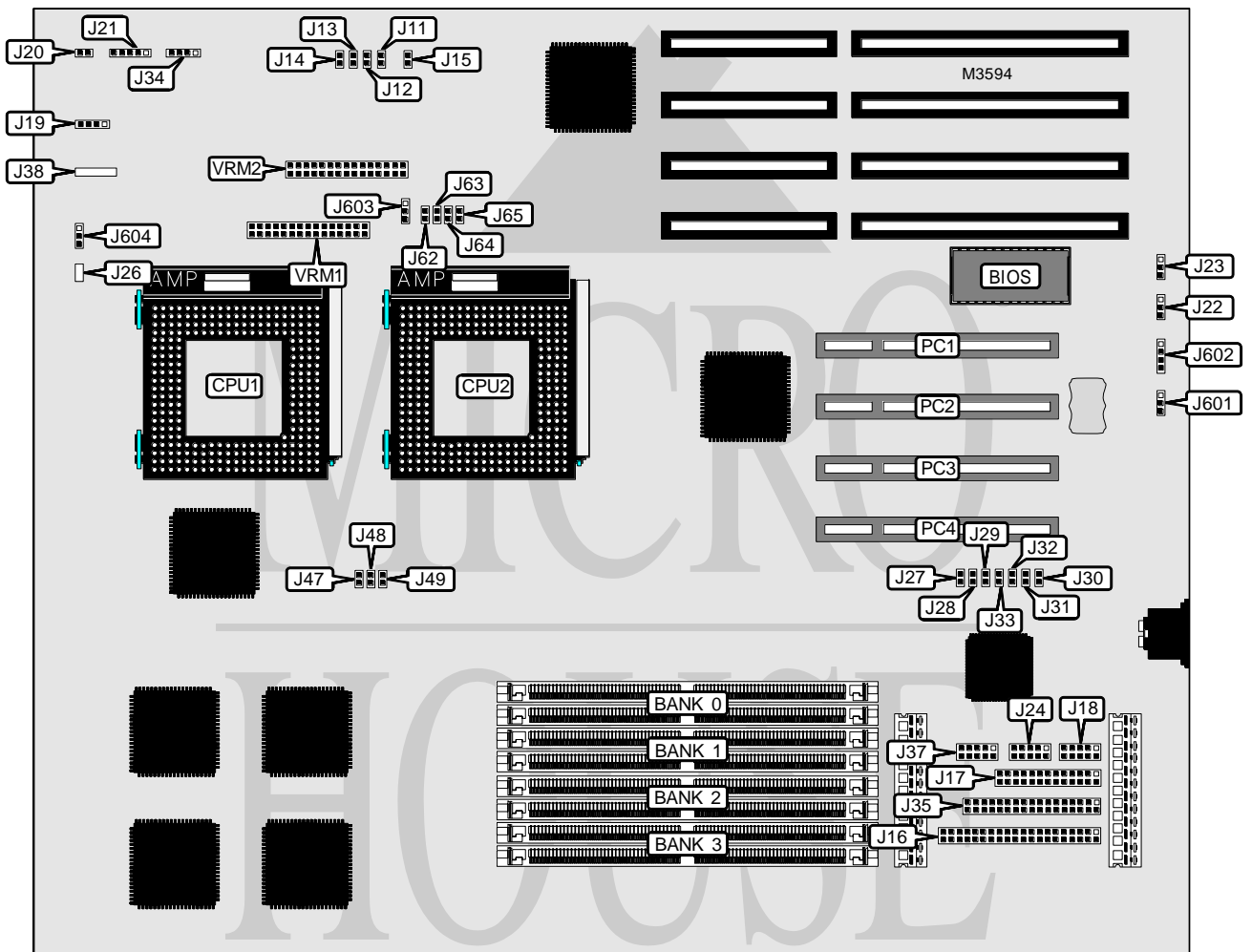


# SUPER MICRO P 6 D O F

<b>Processor</b>	Pentium Pro
<b>Processor Speed</b>	133/150/166/180/200MHz
<b>Chip Set</b>	Intel
<b>Video Chip Set</b>	None
<b>Maximum Onboard Memory</b>	1GB
<b>Maximum Video Memory</b>	None
<b>Cache</b>	256/512KB (on Pentium Pro CPU)
<b>BIOS</b>	AMI
<b>Dimensions</b>	351mm x 305mm
<b>I/O Options</b>	32-bit PCI slots (4), floppy drive interface, IDE interface, parallel port, PS/2 mouse interface, serial ports (2), VRM connectors (2)
<b>NPU Options</b>	None



Continued on next page . . .

# SUPER MICRO

## P 6 D O F

... continued from previous page

CONNECTIONS			
Purpose	Location	Purpose	Location
IDE interface	J16	Floppy drive interface	J35
Parallel port	J17	PS/2 mouse interface	J37
Serial port 1	J18	External battery	J602
IDE interface LED	J19	Chassis fan power	J603
Reset switch	J20	Chassis fan power	J604
Power LED & keylock	J21	32-bit PCI slots	PC1 - PC4
Serial port 2	J24	VRM connector 1	VRM1
PW LED	J26	VRM connector 2	VRM2
Speaker	J34		

USER CONFIGURABLE SETTINGS		
Function	Label	Position
í Factory configured - do not alter	J11	Open
í Factory configured - do not alter	J12	Open
í Factory configured - do not alter	J13	Open
í Factory configured - do not alter	J14	Open
í Factory configured - do not alter	J15	Open
í Factory configured - do not alter	J22	Pins 1 & 2 closed
í Factory configured - do not alter	J23	Pins 2 & 3 closed
í Factory configured - do not alter	J27	Open
í Factory configured - do not alter	J28	Closed
í Factory configured - do not alter	J29	Closed
í Factory configured - do not alter	J30	Open
í Factory configured - do not alter	J31	Open
í Factory configured - do not alter	J32	Open
í Factory configured - do not alter	J33	Open
í Factory configured - do not alter	J38	Unidentified
í CMOS memory normal operation	J601	Pins 1 & 2 closed
CMOS memory clear	J601	Pins 2 & 3 closed

DRAM CONFIGURATION				
Size	Bank 0	Bank 1	Bank 2	Bank 3
8MB	(2) 1M x 36	None	None	None
16MB	(2) 1M x 36	(2) 1M x 36	None	None
16MB	(2) 2M x 36	None	None	None
32MB	(2) 1M x 36	(2) 1M x 36	(2) 1M x 36	(2) 1M x 36
32MB	(2) 2M x 36	(2) 2M x 36	None	None
32MB	(2) 4M x 36	None	None	None
64MB	(2) 2M x 36	(2) 2M x 36	(2) 2M x 36	(2) 2M x 36
64MB	(2) 4M x 36	(2) 4M x 36	None	None
64MB	(2) 8M x 36	None	None	None
128MB	(2) 4M x 36	(2) 4M x 36	(2) 4M x 36	(2) 4M x 36

Continued on next page...

# SUPER MICRO

## P 6 D O F

... continued from previous page

DRAM CONFIGURATION (CON'T)				
Size	Bank 0	Bank 1	Bank 2	Bank 3
128MB	(2) 8M x 36	(2) 8M x 36	None	None
128MB	(2) 16M x 36	None	None	None
256MB	(2) 8M x 36	(2) 8M x 36	(2) 8M x 36	(2) 8M x 36
256MB	(2) 32M x 36	None	None	None
512MB	(2) 16M x 36	(2) 16M x 36	(2) 16M x 36	(2) 16M x 36
512MB	(2) 32M x 36	(2) 32M x 36	None	None
1GB	(2) 32M x 36	(2) 32M x 36	(2) 32M x 36	(2) 32M x 36

CACHE CONFIGURATION
Note: 256KB/512KB cache is located on the Pentium Pro CPU.

CPU SPEED SELECTION							
Speed	J47	J48	J49	J62	J63	J64	J65
133MHz	Open	Closed	Open	Closed	Closed	Closed	Closed
150MHz	Closed	Open	Closed	Closed	Closed	Closed	Open
166MHz	Open	Closed	Open	Closed	Closed	Closed	Open
180MHz	Closed	Open	Closed	Closed	Open	Closed	Closed
200MHz	Open	Closed	Open	Closed	Open	Closed	Closed