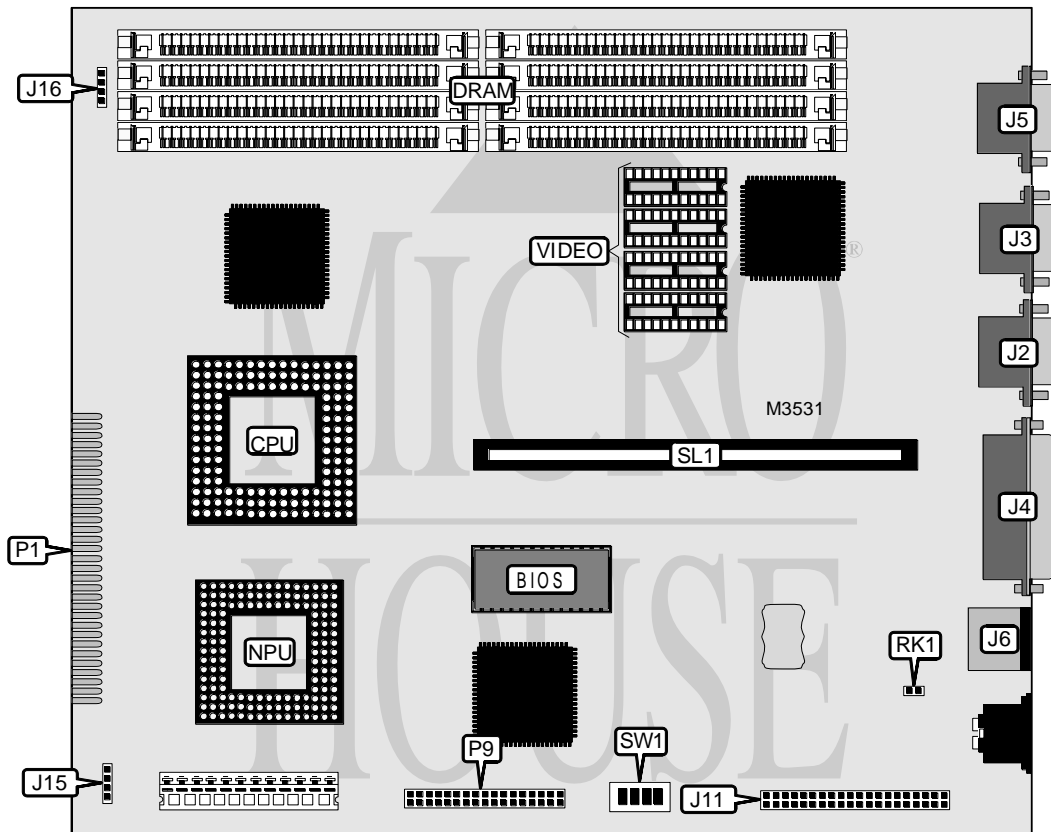


# NCR CORPORATION MODEL 3230

|                               |   |
|-------------------------------|---|
| <b>Processor</b>              | 80486SX/486Overdrive/80487SX/80486DX/486Overdrive/80486DX2  |
| <b>Processor Speed</b>        | 25/33/50(internal)/66(internal)MHz  |
| <b>Chip Set</b>               | Unidentified  |
| <b>Video Chip Set</b>         | Unidentified  |
| <b>Maximum Onboard Memory</b> | 32MB  |
| <b>Maximum Video Memory</b>   | 1MB   |
| <b>Cache</b>                  | Unidentified  |
| <b>BIOS</b>                   | Unidentified  |
| <b>Dimensions</b>             | 254mm x 218mm   |
| <b>I/O Options</b>            | Floppy drive interface, IDE interface, parallel port, PS/2 mouse port, serial ports (2), VGA port, riser slot |
| <b>NPU Options</b>            | None  |



| CONNECTIONS     |          |                        |          |
|-----------------|----------|------------------------|----------|
| Purpose         | Location | Purpose                | Location |
| Serial port 2   | J2       | IDE interface          | J11      |
| Serial port 1   | J3       | Front panel LEDs       | J15      |
| Parallel port   | J4       | Cache memory connector | P1       |
| VGA port        | J5       | Floppy drive interface | P9       |
| PS/2 mouse port | J6       | Riser slot             | SL1      |

Continued on next page...

# NCR CORPORATION

## MODEL 3230

... continued from previous page

| USER CONFIGURABLE SETTINGS     |       |          |
|--------------------------------|-------|----------|
| Function                       | Label | Position |
| Jumper not used                | J16   | N/A      |
| Password normal operation      | RK1   | Open     |
| Password clear                 | RK1   | Closed   |
| On board video enabled         | SW1/1 | On       |
| On board video disabled        | SW1/1 | Off      |
| Monitor type select color      | SW1/2 | On       |
| Monitor type select monochrome | SW1/2 | Off      |

| DRAM CONFIGURATION |            |            |
|--------------------|------------|------------|
| Size               | Bank 0     | Bank 1     |
| 4MB                | (4) 1M x 9 | None       |
| 8MB                | (4) 1M x 9 | (4) 1M x 9 |
| 16MB               | (4) 4M x 9 | None       |
| 20MB               | (4) 4M x 9 | (4) 1M x 9 |
| 32MB               | (4) 4M x 9 | (4) 4M x 9 |

**VIDEO MEMORY CONFIGURATION**

Note: Board accepts 512KB/1MB video memory. The chip sizes and bank location are unidentified.

| CPU TYPE SELECTION |       |       |
|--------------------|-------|-------|
| Type               | SW1/3 | SW1/4 |
| 80486SX            | On    | Off   |
| 486SX Overdrive    | Off   | Off   |
| 80487SX            | Off   | Off   |
| 80486DX            | Off   | On    |
| 486DX Overdrive    | On    | Off   |
| 80486DX2           | Off   | On    |