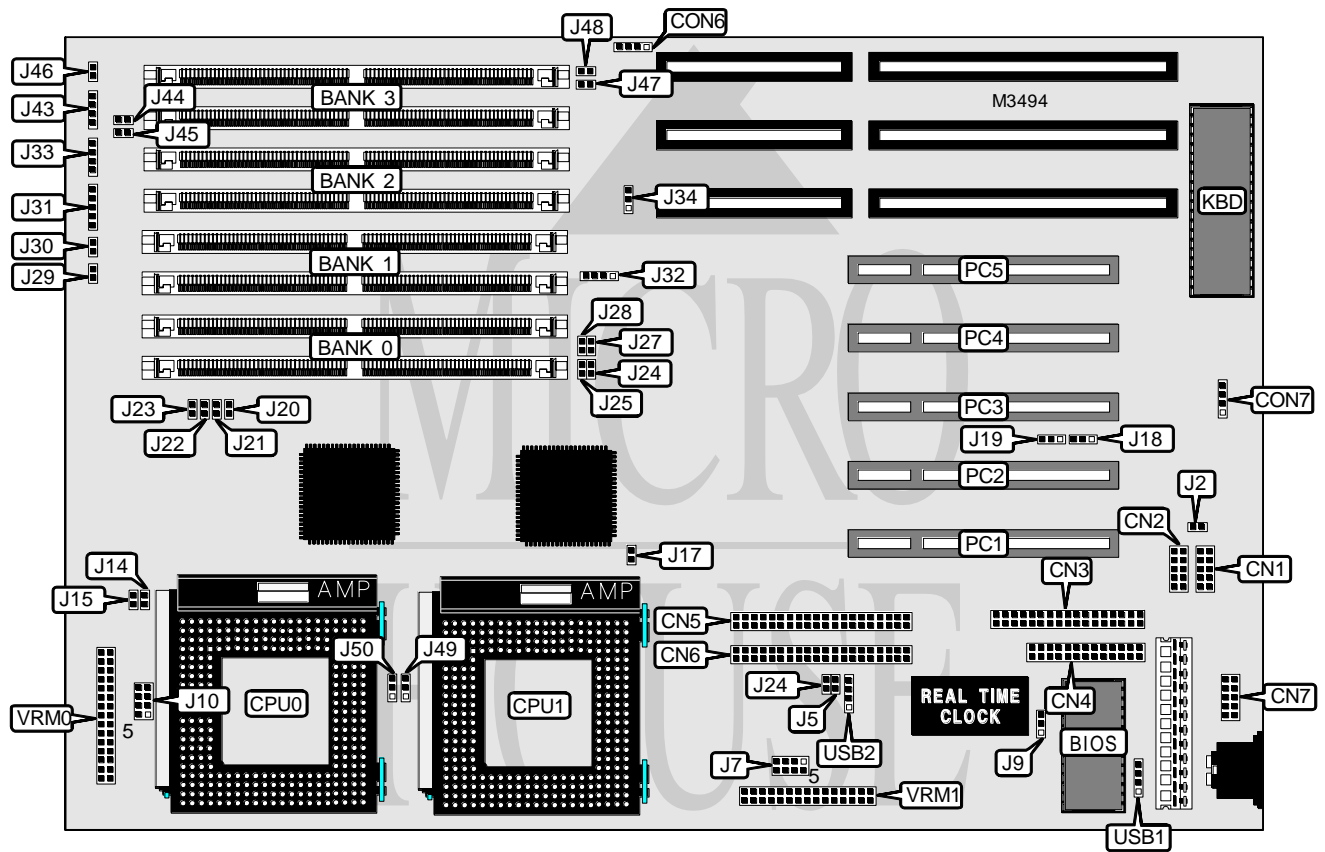


# TYAN COMPUTER CORPORATION

## S1662 (REV. 1.0)

<b>Processor</b>	Pentium Pro
<b>Processor Speed</b>	150/166/180/200MHz
<b>Chip Set</b>	Intel
<b>Video Chip Set</b>	None
<b>Maximum Onboard Memory</b>	1GB (BEDO/EDO supported)
<b>Maximum Video Memory</b>	None
<b>Cache</b>	256/512KB (on Pentium Pro CPU)
<b>BIOS</b>	AMI/Award
<b>Dimensions</b>	330mm x 218mm
<b>I/O Options</b>	32-bit PCI slots (5), floppy drive interface, IDE interfaces (2), parallel port, PS/2 mouse interface, serial ports (2), IR connectors (2), VRM connectors (2), USB connectors (2)
<b>NPU Options</b>	None



Continued on next page...

# TYAN COMPUTER CORPORATION

## S1662 (REV. 1.0)

... continued from previous page

CONNECTIONS			
Purpose	Location	Purpose	Location
Serial port 2	CN1	Turbo switch	J30
Serial port 1	CN2	Power LED & keylock	J31
Floppy drive interface	CN3	Speaker	J33
Parallel port	CN4	IDE interface LED	J43
IDE interface 2	CN5	Reset switch	J46
IDE interface 1	CN6	32-bit PCI slots	PC1 - PC5
PS/2 mouse interface	CN7	USB connector	UBS1
IR connector	CON6	USB connector	USB2
IR connector	CON7	VRM connector	VRM0
Turbo LED	J29	VRM connector	VRM1

USER CONFIGURABLE SETTINGS		
Function	Label	Position
Jumper information unavailable	J2	Unidentified
í CMOS memory normal operation	J5	Open
CMOS memory clear	J5	Closed
í Flash BIOS voltage select 5v	J9	Pins 1 & 2 closed
Flash BIOS voltage select 12v	J9	Pins 2 & 3 closed
Jumper information unavailable	J17	Unidentified
Jumper information unavailable	J24	Unidentified
SMC I/O chip type select 665IR	J34	Pins 1 & 2 closed
SMC I/O chip type select 669IR	J34	Pins 2 & 3 closed

DRAM CONFIGURATION				
Size	Bank 0	Bank 1	Bank 2	Bank 3
8MB	(2) 1M x 36	None	None	None
16MB	(2) 2M x 36	None	None	None
16MB	(2) 1M x 36	(2) 1M x 36	None	None
32MB	(2) 2M x 36	(2) 2M x 36	None	None
32MB	(2) 1M x 36	(2) 1M x 36	(2) 1M x 36	(2) 1M x 36
32MB	(2) 4M x 36	None	None	None
64MB	(2) 4M x 36	(2) 4M x 36	None	None
64MB	(2) 8M x 36	None	None	None
128MB	(2) 16M x 36	None	None	None
128MB	(2) 4M x 36	(2) 4M x 36	(2) 4M x 36	(2) 4M x 36
128MB	(2) 8M x 36	(2) 8M x 36	None	None
192MB	(2) 8M x 36	(2) 8M x 36	(2) 8M x 36	None
256MB	(2) 8M x 36	(2) 8M x 36	(2) 8M x 36	(2) 8M x 36
256MB	(2) 16M x 36	(2) 16M x 36	None	None
256MB	(2) 32M x 36	None	None	None
384MB	(2) 16M x 36	(2) 16M x 36	(2) 16M x 36	None
512MB	(2) 16M x 36	(2) 16M x 36	(2) 16M x 36	(2) 16M x 36

Continued on next page...

# TYAN COMPUTER CORPORATION

## S1662 (REV. 1.0)

... continued from previous page

DRAM CONFIGURATION (CON'T)				
Size	Bank 0	Bank 1	Bank 2	Bank 3
512MB	(2) 32M x 36	(2) 32M x 36	None	None
640MB	(2) 32M x 36	(2) 16M x 36	(2) 16M x 36	(2) 16M x 36
768MB	(2) 32M x 36	(2) 32M x 36	(2) 32M x 36	None
768MB	(2) 32M x 36	(2) 32M x 36	(2) 16M x 36	(2) 16M x 36
832MB	(2) 32M x 36	(2) 32M x 36	(2) 32M x 36	(2) 8M x 36
896MB	(2) 32M x 36	(2) 32M x 36	(2) 32M x 36	(2) 16M x 36
1024MB	(2) 32M x 36	(2) 32M x 36	(2) 32M x 36	(2) 32M x 36

Note: Board accepts BEDO/EDO memory. Board also accepts x 32 SIMMs.

DRAM VOLTAGE CONFIGURATION								
Voltage	J20	J21	J22	J23	J44	J45	J47	J48
3.3v	Closed	Closed	Closed	Closed	Open	Open	Open	Open
5v	Open	Open	Open	Open	Closed	Closed	Closed	Closed

CACHE CONFIGURATION
Note: 256KB/512KB cache is located on the Pentium Pro CPU.

CPU SPEED SELECTION							
Speed	J14	J15	J24	J25	J27	J28	J32
150MHz	Open	Closed	Closed	Closed	Open	Closed	3 & 4
166MHz	Closed	Open	Closed	Closed	Open	Closed	1 & 2
180MHz	Open	Closed	Open	Closed	Closed	Closed	3 & 4
200MHz	Closed	Open	Open	Closed	Closed	Closed	1 & 2

Note: Pins designated should be in the closed position.

CPU TYPE SELECTION		
Type	J49	J50
í CPU0 used as primary/dual/single CPU	Pins 1 & 2 closed	Pins 2 & 3 closed
CPU1 used as a single CPU system	Pins 2 & 3 closed	Pins 1 & 2 closed

Continued on next page. . .

# TYAN COMPUTER CORPORATION

## S1662 (REV. 1.0)

... continued from previous page

CPU VOLTAGE SELECTION		
Voltage	J7	J10
í Auto select	Open	Open
2.1v	1 & 5	1 & 5
2.2v	2 & 6	2 & 6
2.3v	1 & 5, 2 & 6	1 & 5, 2 & 6
2.4v	3 & 7	3 & 7
2.5v	1 & 5, 3 & 7	1 & 5, 3 & 7
2.6v	2 & 6, 3 & 7	2 & 6, 3 & 7
2.7v	1 & 5, 2 & 6, 3 & 7	1 & 5, 2 & 6, 3 & 7
2.8v	4 & 8	4 & 8
2.9v	1 & 5, 4 & 8	1 & 5, 4 & 8
3.0v	2 & 6, 4 & 8	2 & 6, 4 & 8
3.1v	1 & 5, 2 & 6, 4 & 8	1 & 5, 2 & 6, 4 & 8
3.2v	3 & 7, 4 & 8	3 & 7, 4 & 8
3.3v	1 & 5, 3 & 7, 4 & 8	1 & 5, 3 & 7, 4 & 8
3.4v	2 & 6, 3 & 7, 4 & 8	2 & 6, 3 & 7, 4 & 8
3.5v	1 & 5, 2 & 6, 3 & 7, 4 & 8	1 & 5, 2 & 6, 3 & 7, 4 & 8

Note: Pins designated should be in the closed position.

SERIAL PORT SELECTION		
Setting	J18	J19
í Used and COM 1 or 2	Pins 1 & 2 closed	Pins 1 & 2 closed
Used as IR connector	Pins 2 & 3 closed	Pins 2 & 3 closed