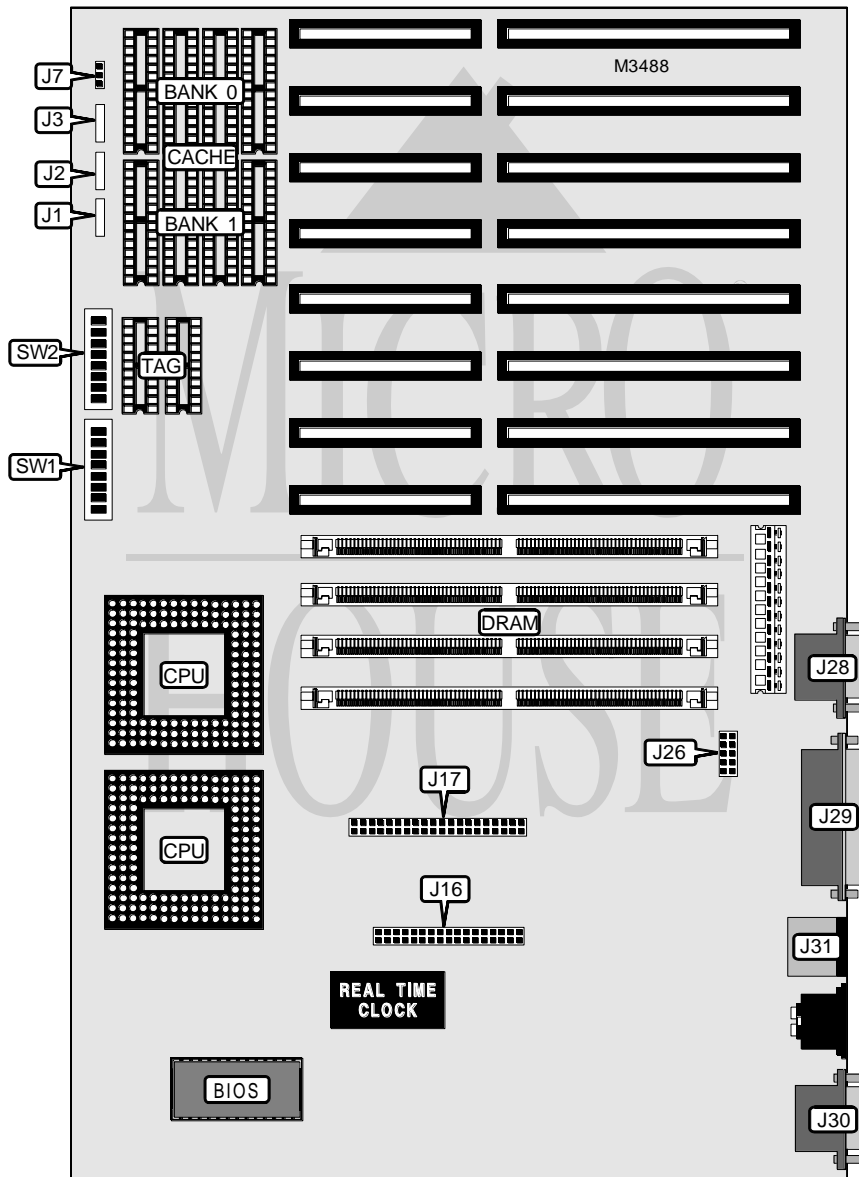


NCR CORPORATION MODEL 3332 DESKSIDE PC80486AT

Processor	80486SX/80487SX/80486DX/80486DX2
Processor Speed	16/20/25/33/50(internal)/66(internal)MHz
Chip Set	Unidentified
Video Chip Set	Unidentified
Maximum Onboard Memory	64MB
Maximum Video Memory	1MB
Cache	64/256KB
BIOS	Unidentified
Dimensions	330mm x 218mm
I/O Options	Floppy drive interface, IDE interface, parallel port, PS/2 mouse port, serial ports (2), VGA port
NPU Options	None



Continued on next page. . .

NCR CORPORATION

MODEL 3332 DESKSIDE PC80486AT

... continued from previous page

CONNECTIONS			
Purpose	Location	Purpose	Location
IDE interface LED	J1	Serial port 2	J26
Keylock	J2	Serial port 1	J28
Chassis fan power	J3	Parallel port	J29
Speaker	J7	VGA port	J30
Floppy drive interface	J16	PS/2 mouse port	J31
IDE interface	J17		

USER CONFIGURABLE SETTINGS		
Function	Label	Position
í Internal speaker enabled	J7	Pins 1 & 2 closed
Internal speaker disabled	J7	Open
External speaker connected	J7	Pins 2 & 3 closed
í On board video enabled	SW1/4	Off
On board video disabled	SW1/4	On
í Password enabled	SW1/5	Off
Password disabled	SW1/5	On
í Monitor type select color	SW1/6	On
Monitor type select monochrome	SW1/6	Off

DRAM CONFIGURATION				
Size	Bank 0	Bank 1	Bank 2	Bank 3
4MB	(1) 1M x 36	None	None	None
8MB	(1) 1M x 36	(1) 1M x 36	None	None
12MB	(1) 1M x 36	(1) 1M x 36	(1) 1M x 36	None
16MB	(1) 1M x 36	(1) 1M x 36	(1) 1M x 36	(1) 1M x 36
16MB	(1) 4M x 36	None	None	None
20MB	(1) 1M x 36	(1) 4M x 36	None	None
24MB	(1) 1M x 36	(1) 1M x 36	(1) 4M x 36	None
28MB	(1) 1M x 36	(1) 1M x 36	(1) 1M x 36	(1) 4M x 36
32MB	(1) 4M x 36	(1) 4M x 36	None	None
36MB	(1) 1M x 36	(1) 4M x 36	(1) 4M x 36	None
40MB	(1) 1M x 36	(1) 1M x 36	(1) 4M x 36	(1) 4M x 36
48MB	(1) 4M x 36	(1) 4M x 36	(1) 4M x 36	None
52MB	(1) 1M x 36	(1) 4M x 36	(1) 4M x 36	(1) 4M x 36
64MB	(1) 4M x 36	(1) 4M x 36	(1) 4M x 36	(1) 4M x 36

Note: The location of banks 0, 1, 2 & 3 are unidentified.

CACHE CONFIGURATION			
Size	Bank 0	Bank 1	TAG
64KB	(4) 8K x 8	(4) 8K x 8	(2) 16K x 4
256KB	(4) 32K x 8	(4) 32K x 8	(2) 16K x 4

Continued on next page...

NCR CORPORATION
MODEL 3332 DESKSIDE PC80486AT

... continued from previous page

CACHE SWITCH CONFIGURATION								
Size	SW2/1	SW2/2	SW2/3	SW2/4	SW2/5	SW2/6	SW2/7	SW2/8
None	Off	Off	Off	Off	Off	Off	Off	Off
64KB	On	On	On	On	Off	Off	Off	Off
256KB	Off	Off	Off	Off	On	On	On	On

VIDEO MEMORY CONFIGURATION
Note: The location of the 1MB video memory is unidentified.

CPU SPEED SELECTION			
Speed	SW1/1	SW1/2	SW1/3
16MHz	On	On	Off
20MHz	On	Off	On
25MHz	Off	On	On
33MHz	On	On	On
50iMHz	Off	On	On
66iMHz	On	On	On

CPU TYPE SELECTION	
Type	SW1/7
80487SX/80486DX/80486DX2 not installed	Off
80487SX/80486DX/80486DX2 installed	On

CPU TYPE SELECTION	
Type	SW1/8
80487SX	On
80486DX	Off
80486DX2	Off