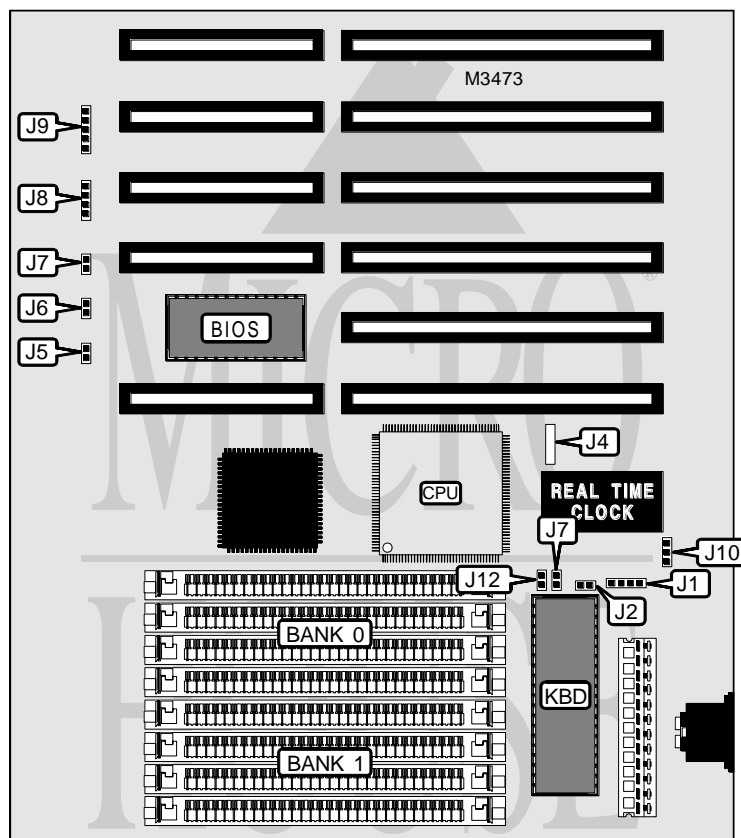


# FIRST INTERNATIONAL COMPUTER, INC.

## 486-J (REV. B)

<b>Processor</b>	80486SX
<b>Processor Speed</b>	25MHz
<b>Chip Set</b>	VIA
<b>Video Chip Set</b>	None
<b>Maximum Onboard Memory</b>	64MB
<b>Maximum Video Memory</b>	None
<b>Cache</b>	None
<b>BIOS</b>	AMI/Award
<b>Dimensions</b>	Unidentified
<b>I/O Options</b>	None
<b>NPU Options</b>	None



CONNECTIONS			
Purpose	Location	Purpose	Location
External battery	J1	Reset switch	J7
Turbo LED	J5	Speaker	J8
Turbo switch	J6	Power LED & keylock	J9

*Continued on next page. . .*

**FIRST INTERNATIONAL COMPUTER, INC.  
486-J (REV. B)**

... continued from previous page

USER CONFIGURABLE SETTINGS		
Function	Label	Position
í Monitor type select monochrome/EGA/VGA	J2	Open
Monitor type select color	J2	Closed
Jumper information unavailable	J4	Unidentified
í Password normal operation (Award BIOS)	J7	Open
Password clear	J7	Closed
í Battery type select internal	J10	Pins 1 & 2 closed
Battery type select external	J10	Pins 2 & 3 closed
í Password normal operation (AMI BIOS)	J12	Open
Password clear	J12	Closed

Note: J1 and J10 are only present if the DS12885Q clock is installed.

DRAM CONFIGURATION		
Size	Bank 0	Bank 1
1MB	(4) 256K x 9	None
2MB	(4) 256K x 9	(4) 256K x 9
4MB	(4) 1M x 9	None
5MB	(4) 256K x 9	(4) 1M x 9
5MB	(4) 1M x 9	(4) 256K x 9
8MB	(4) 1M x 9	(4) 1M x 9
16MB	(4) 4M x 9	None
17MB	(4) 256K x 9	(4) 4M x 9
17MB	(4) 4M x 9	(4) 256K x 9
20MB	(4) 1M x 9	(4) 4M x 9
20MB	(4) 4M x 9	(4) 1M x 9
32MB	(4) 4M x 9	(4) 4M x 9
64MB	(4) 16M x 9	None