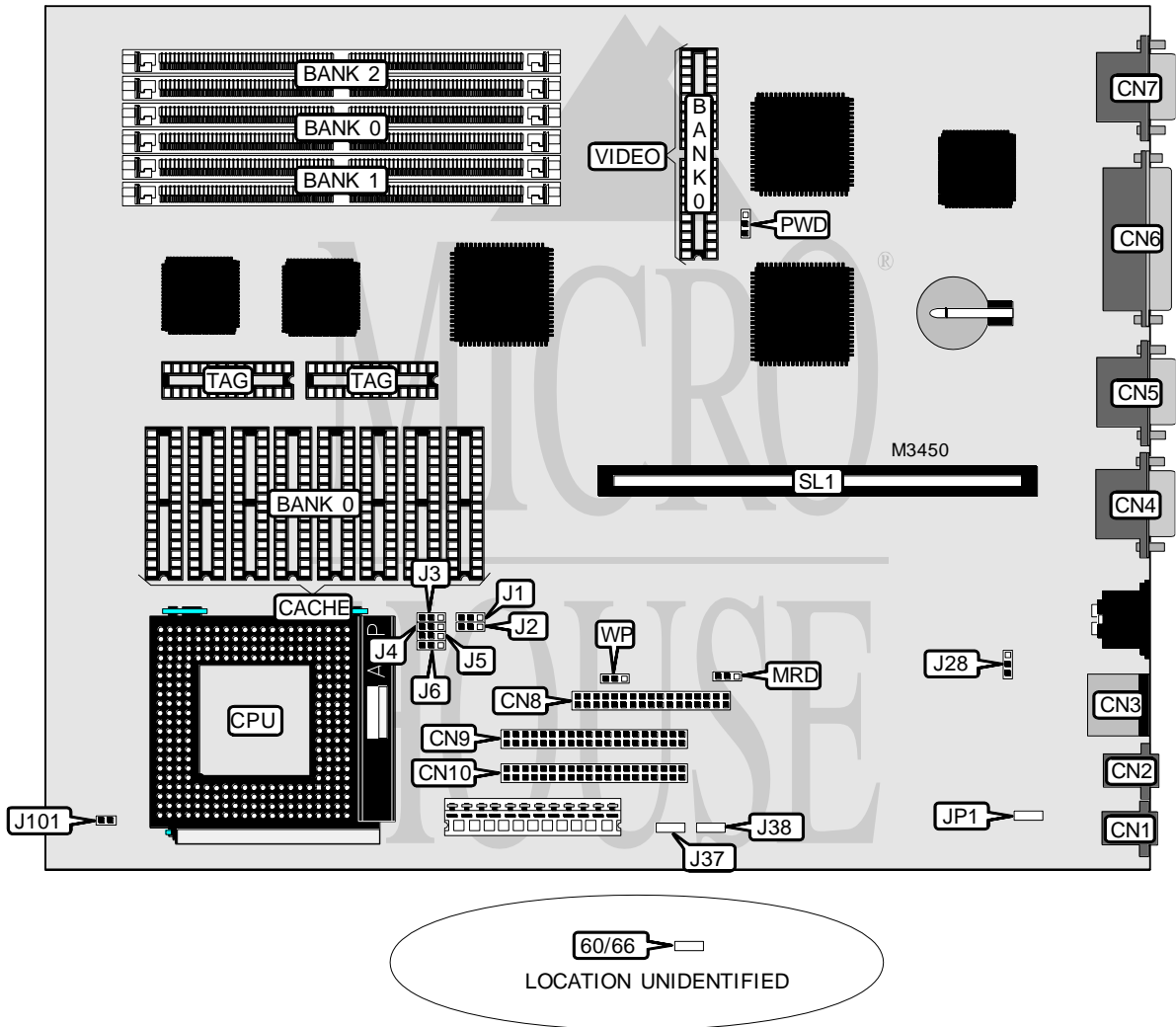


IBM CORPORATION PC 730, PC 750

Processor	Pentium
Processor Speed	60/90MHz
Chip Set	Unidentified
Video Chip Set	Unidentified
Maximum Onboard Memory	192MB
Maximum Video Memory	Unidentified
Cache	256/1024KB
BIOS	Unidentified
Dimensions	330mm x 218mm
I/O Options	Floppy drive interface, IDE interfaces (2), parallel port, PS/2 mouse port, serial ports (2), VGA port, riser slot, CD-ROM audio interface, audio line in connector, audio line out connector
NPU Options	None



Continued on next page . . .

IBM CORPORATION

PC 730, PC 750

... continued from previous page

CONNECTIONS			
Purpose	Location	Purpose	Location
Audio line out connector	CN1	Floppy drive interface	CN8
Audio line in connector	CN2	IDE interface	CN9
PS/2 mouse port	CN3	IDE interface	CN10
Serial port	CN4	CD-ROM audio interface	JP1
Serial port	CN5	On/off switch connector	J37
Parallel port	CN6	On/off switch power supply connector	J38
VGA port	CN7	Riser slot	SL1

USER CONFIGURABLE SETTINGS		
Function	Label	Position
í Factory configured - do not alter	60/66	Unidentified
Jumper information unavailable	J1	Unidentified
Jumper information unavailable	J2	Unidentified
PS/2 mouse enabled	J28	Pins 1 & 2 closed
PS/2 mouse disabled	J28	Pins 2 & 3 closed
í Modem answers on ring	MRD	Pins 2 & 3 closed
Modem does not answer on ring	MRD	Pins 1 & 2 closed
í Password normal operation	PWD	Pins 1 & 2 closed
Password clear	PWD	Pins 2 & 3 closed
í Floppy drive write protect disabled	WP	Pins 1 & 2 closed
Floppy drive write protect enabled	WP	Pins 2 & 3 closed

DRAM CONFIGURATION			
Size	Bank 0	Bank 1	Bank 2
8MB	(2) 1M x 36	None	None
16MB	(2) 1M x 36	(2) 1M x 36	None
16MB	(2) 2M x 36	None	None
24MB	(2) 1M x 36	(2) 1M x 36	(2) 1M x 36
24MB	(2) 2M x 36	(2) 1M x 36	None
32MB	(2) 2M x 36	(2) 2M x 36	None
32MB	(2) 4M x 36	None	None
40MB	(2) 2M x 36	(2) 2M x 36	(2) 1M x 36
40MB	(2) 4M x 36	(2) 1M x 36	None
48MB	(2) 2M x 36	(2) 2M x 36	(2) 2M x 36
48MB	(2) 4M x 36	(2) 2M x 36	None
64MB	(2) 4M x 36	(2) 4M x 36	None
64MB	(2) 8M x 36	None	None
72MB	(2) 4M x 36	(2) 4M x 36	(2) 1M x 36
72MB	(2) 8M x 36	(2) 1M x 36	None
80MB	(2) 4M x 36	(2) 4M x 36	(2) 2M x 36
80MB	(2) 8M x 36	(2) 2M x 36	None
96MB	(2) 4M x 36	(2) 4M x 36	(2) 4M x 36

Continued on next page...

IBM CORPORATION
PC 730, PC 750

... continued from previous page

DRAM CONFIGURATION (CON'T)			
Size	Bank 0	Bank 1	Bank 2
96MB	(2) 8M x 36	(2) 4M x 36	None
128MB	(2) 8M x 36	(2) 8M x 36	None
136MB	(2) 8M x 36	(2) 8M x 36	(2) 1M x 36
144MB	(2) 8M x 36	(2) 8M x 36	(2) 2M x 36
160MB	(2) 8M x 36	(2) 8M x 36	(2) 4M x 36
192MB	(2) 8M x 36	(2) 8M x 36	(2) 8M x 36

CACHE CONFIGURATION		
Size	Bank 0	TAG
256KB	(8) 32K x 8	Unidentified
1MB	(8) 64K x 8	Unidentified

CACHE JUMPER CONFIGURATION				
Size	J3	J4	J5	J6
256KB	Pins 1 & 2 closed	Pins 1 & 2 closed	Pins 1 & 2 closed	Pins 1 & 2 closed
1MB	Pins 2 & 3 closed	Pins 2 & 3 closed	Pins 2 & 3 closed	Pins 2 & 3 closed

VIDEO MEMORY CONFIGURATION	
Size	Bank 0
1MB	(2) 256K x 16
Note: The maximum memory size is unidentified. This configuration is for an upgrade.	

CPU BUS - CORE SELECTION		
Bus - Core	J101	J101
1/2	Pins 2 & 3 closed	Closed
2/3	Pins 1 & 2 closed	Open
Note: Depending on board version, J101 will be either a 2-pin or 3-pin jumper.		