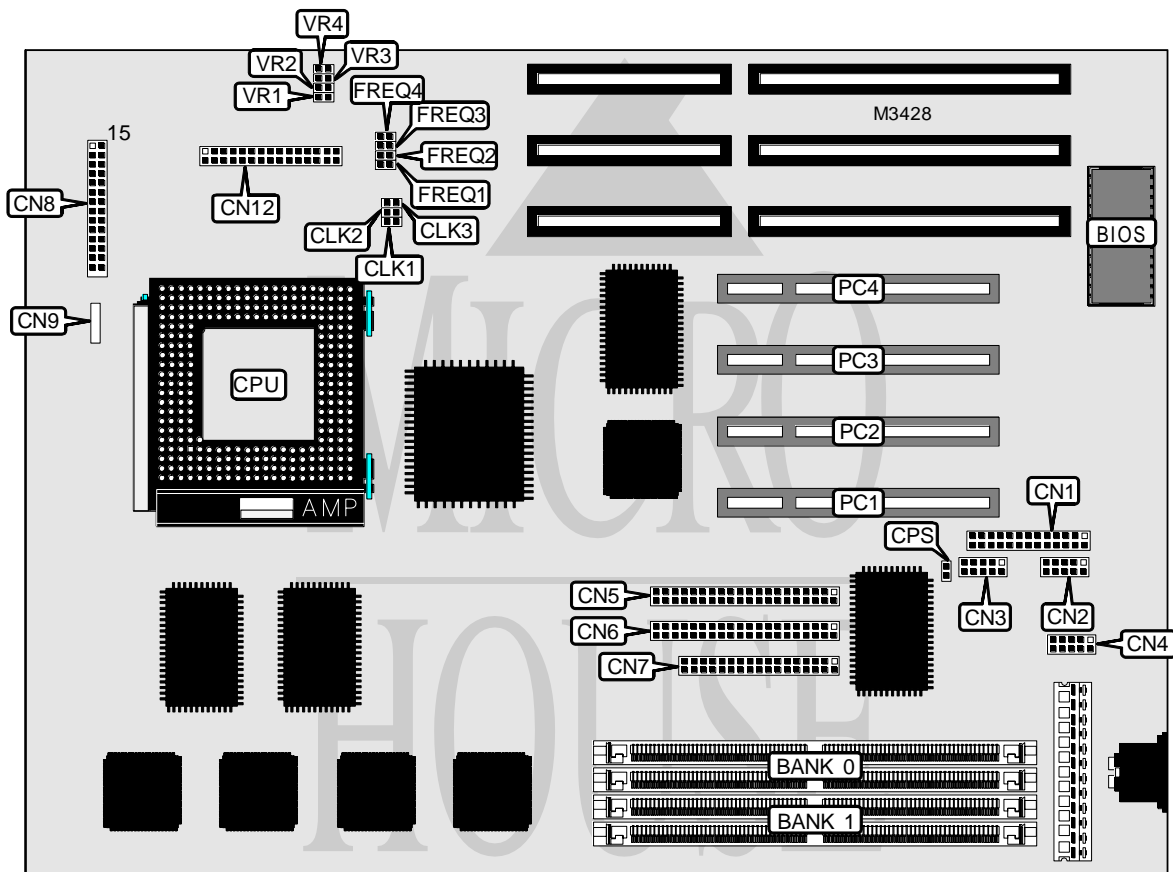


# FIRST INTERNATIONAL COMPUTER, INC. PO-6000 (REV. A0)

<b>Processor</b>	Pentium Pro
<b>Processor Speed</b>	150/166/180/200MHz
<b>Chip Set</b>	Intel
<b>Video Chip Set</b>	None
<b>Maximum Onboard Memory</b>	512MB
<b>Maximum Video Memory</b>	None
<b>Cache</b>	256/512KB (on Pentium Pro CPU)
<b>BIOS</b>	Phoenix
<b>Dimensions</b>	330mm x 218mm
<b>I/O Options</b>	32-bit PCI slots (4), floppy drive interface, green PC connector, IDE interfaces (2), parallel port, serial ports (2), IR connector, VRM connector
<b>NPU Options</b>	None



*Continued on next page...*

FIRST INTERNATIONAL COMPUTER, INC.  
 PO-6000 (REV. A0)

... continued from previous page

CONNECTIONS			
Purpose	Location	Purpose	Location
Parallel port	CN1	Turbo LED	CN8 pins 7 & 8
Serial port 1	CN2	Green PC connector	CN8 pins 10 & 11
Serial port 2	CN3	Speaker	CN8 pins 15 - 18
IR connector	CN4	IDE interface LED	CN8 pins 20 & 21
IDE interface 2	CN5	Reset switch	CN8 pins 27 & 28
IDE interface 1	CN6	Chassis fan power	CN9
Floppy drive interface	CN7	VRM connector	CN12
Power LED & keylock	CN8 pins 1 - 5	32-bit PCI slots	PC1 - PC4

USER CONFIGURABLE SETTINGS		
Function	Label	Position
í Password normal operation	CPS	Open
Password clear	CPS	Closed

DRAM CONFIGURATION		
Size	Bank 0	Bank 1
8MB	(2) 1M x 36	None
16MB	(2) 2M x 36	None
16MB	(2) 1M x 36	(2) 1M x 36
32MB	(2) 4M x 36	None
32MB	(2) 2M x 36	(2) 2M x 36
64MB	(2) 8M x 36	None
64MB	(2) 4M x 36	(2) 4M x 36
128MB	(2) 8M x 36	(2) 8M x 36
256MB	(2) 16M x 36	(2) 16M x 36
256MB	(2) 32M x 36	None
512MB	(2) 32M x 36	(2) 32M x 36

CACHE CONFIGURATION
Note: 256KB/512KB cache is located on the Pentium Pro CPU.

CPU SPEED SELECTION					
CPU speed	Clock speed	Multiplier	CLK1	CLK2	CLK3
150MHz	50MHz	3x	Open	Open	Open
150MHz	60MHz	2.5x	Closed	Closed	Open
166MHz	66MHz	2.5x	Closed	Open	Open
180MHz	60MHz	3x	Closed	Closed	Open
200MHz	66MHz	3x	Closed	Open	Open

Continued on next page...

FIRST INTERNATIONAL COMPUTER, INC.  
PO-6000 (REV. A0)

... continued from previous page

CPU SPEED SELECTION (CON'T)						
CPU speed	Clock speed	Multiplier	FREQ1	FREQ2	FREQ3	FREQ4
150MHz	50MHz	3x	Closed	Closed	Open	Closed
150MHz	60MHz	2.5x	Open	Closed	Closed	Closed
166MHz	66MHz	2.5x	Open	Closed	Closed	Closed
180MHz	60MHz	3x	Closed	Closed	Open	Closed
200MHz	66MHz	3x	Closed	Closed	Open	Closed

CPU VOLTAGE SELECTION				
Voltage	VR1	VR2	VR3	VR4
2.9v	Closed	Open	Open	Closed
3v	Closed	Open	Closed	Open
3.1v	Closed	Closed	Open	Closed
3.2v	Closed	Closed	Open	Open
3.3v	Closed	Open	Closed	Closed
3.4v	Open	Closed	Closed	Closed