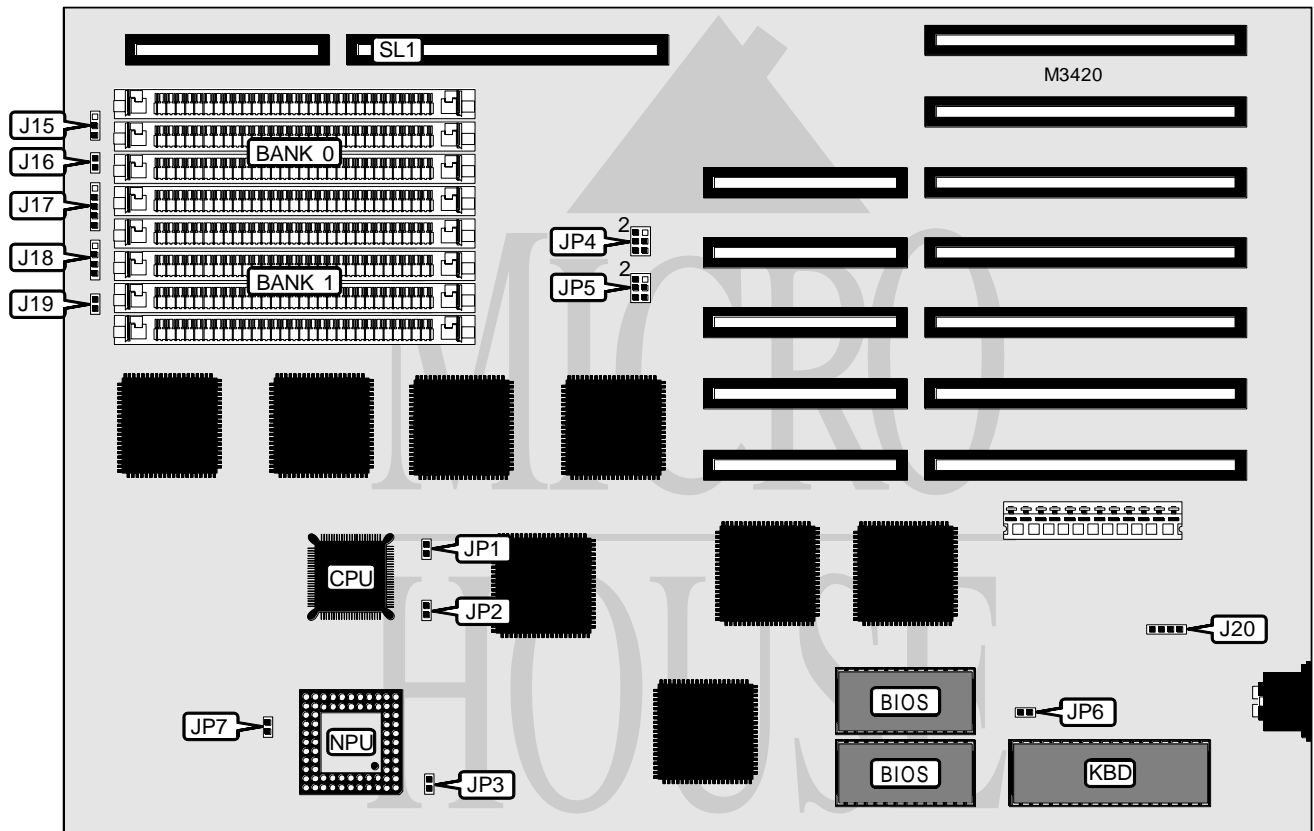


UNIDENTIFIED

386 MB

Processor	80386
Processor Speed	16/20/25MHz
Chip Set	C & T
Video Chip Set	None
Maximum Onboard Memory	16MB (8MB on external memory card)
Maximum Video Memory	None
Cache	None
BIOS	Unidentified
Dimensions	330mm x 218mm
I/O Options	External memory card
NPU Options	80387



CONNECTIONS			
Purpose	Location	Purpose	Location
Turbo switch	J15	Reset switch	J19
Turbo LED	J16	External battery	J20
Power LED & keylock	J17	External memory card	SL1
Speaker	J18		

Continued on next page...

UNIDENTIFIED

386 MB

... continued from previous page

USER CONFIGURABLE SETTINGS		
Function	Label	Position
OSC3 used as processor clock	J15	Pins 2 & 3 closed
OSC2 used as processor clock	J15	Open
Pipeline mode enabled	JP2	Closed
Pipeline mode disabled	JP2	Open
NPU synchronous with CPU	JP3	Closed
NPU asynchronous with CPU	JP3	Open
Monitor type select color	JP6	Closed
Monitor type select monochrome	JP6	Open

DRAM CONFIGURATION		
Size	Bank 0	Bank 1
1MB	(4) 256K x 9	None
2MB	(4) 256K x 9	(4) 256K x 9
4MB	(4) 1M x 9	None
5MB	(4) 256K x 9	(4) 1M x 9
5MB	(4) 1M x 9	(4) 256K x 9
8MB	(4) 1M x 9	(4) 1M x 9

Note: From 8MB - 16MB, install memory card at SL1. Make sure the size of DRAM chips is the same on both the motherboard and the memory card.

DRAM JUMPER CONFIGURATION		
Setting	JP4	JP5
Lowest address banks enabled	Pins 1 & 3, 2 & 4 closed	Pins 1 & 3, 2 & 4 closed
Highest address banks enabled	Pins 3 & 5, 4 & 6 closed	Pins 3 & 5, 4 & 6 closed

NPU SELECTION		
Type	JP1	JP7
Installed	Closed	Closed
Not installed	Open	Open