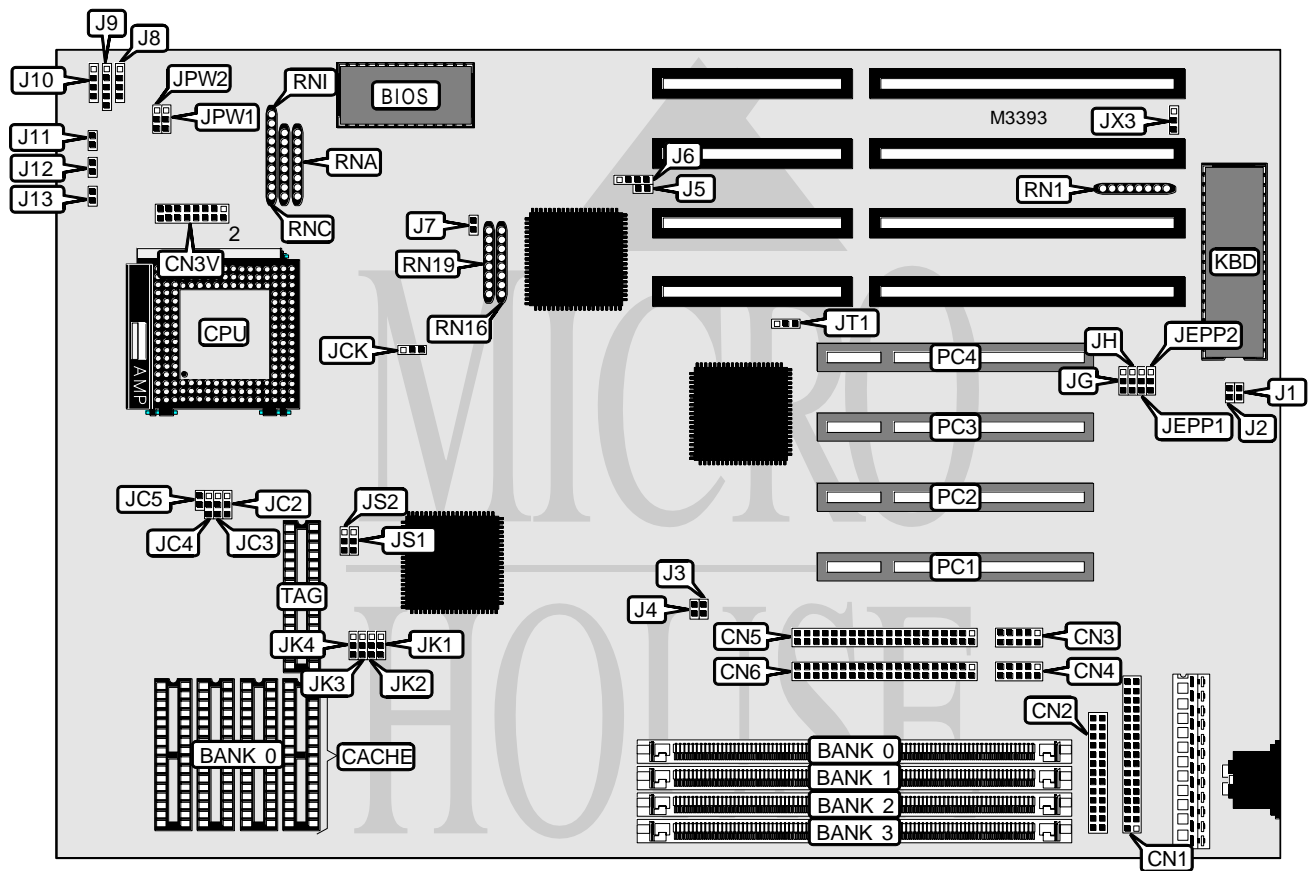


FIRST INTERNATIONAL COMPUTER, INC.

486-PIO-2 (REV. A2)

Processor	80486SX/CX486DX/SL80486DX/UMCU5SD/UMCU5S/UMCU5SLV/ CX486DX2/AM486DX2/(SL)AM486DX2/SL80486DX2/AM486DX4/ (SL)AM486DX4/80486FX4/P24D/P24S/P24T/CXM1
Processor Speed	25/33/40/50(internal)/50/66(internal)/75(internal)/80(internal)/ 100(internal)MHz
Chip Set	VIA
Video Chip Set	None
Maximum Onboard Memory	128MB
Maximum Video Memory	None
Cache	128/256/512KB
BIOS	Award
Dimensions	330mm x 218mm
I/O Options	32-bit PCI slots (4), floppy drive interface, green PC connector, IDE interfaces (2), parallel port, serial ports (2)
NPU Options	None



Continued on next page...

FIRST INTERNATIONAL COMPUTER, INC.

486-PIO-2 (REV. A2)

... continued from previous page

CONNECTIONS			
Purpose	Location	Purpose	Location
Floppy drive interface	CN1	External battery	J6
Parallel port	CN2	Green PC connector	J7
Serial port 2	CN3	Chassis fan power	J8
Serial port 1	CN4	Power LED & keylock	J9
IDE interface 2	CN5	Speaker	J10
IDE interface 1	CN6	Reset switch	J11
IDE interface LED	J3	Turbo switch	J12
Green PC LED	J4	Turbo LED	J13
Outlet connector	J5	32-bit PCI slots	PC1 - PC4

USER CONFIGURABLE SETTINGS		
Function	Label	Position
í Monitor type select monochrome/EGA/VGA	J1	Open
Monitor type select CGA	J1	Closed
í Password normal operation	J2	Open
Password clear	J2	Closed

DRAM CONFIGURATION				
Size	Bank 0	Bank 1	Bank 2	Bank 3
1MB	(1) 256K x 36	None	None	None
1MB	None	(1) 256K x 36	None	None
1MB	None	None	(1) 256K x 36	None
2MB	(1) 256K x 36	(1) 256K x 36	None	None
2MB	(1) 256K x 36	None	(1) 256K x 36	None
2MB	None	None	(1) 256K x 36	(1) 256K x 36
2MB	None	(1) 256K x 36	(1) 256K x 36	None
3MB	(1) 256K x 36	(1) 256K x 36	(1) 256K x 36	None
3MB	None	(1) 256K x 36	(1) 256K x 36	(1) 256K x 36
3MB	(1) 256K x 36	None	(1) 256K x 36	(1) 256K x 36
4MB	(1) 1M x 36	None	None	None
4MB	None	(1) 1M x 36	None	None
4MB	None	None	(1) 1M x 36	None
4MB	(1) 256K x 36	(1) 256K x 36	(1) 256K x 36	(1) 256K x 36
5MB	(1) 256K x 36	(1) 1M x 36	None	None
5MB	(1) 256K x 36	None	(1) 1M x 36	None
5MB	(1) 1M x 36	(1) 256K x 36	None	None
5MB	(1) 1M x 36	None	(1) 256K x 36	None
5MB	None	(1) 256K x 36	(1) 1M x 36	None
5MB	None	(1) 1M x 36	(1) 256K x 36	None
6MB	(1) 1M x 36	(1) 256K x 36	(1) 256K x 36	None
6MB	(1) 256K x 36	(1) 1M x 36	(1) 256K x 36	None

Continued on next page...

FIRST INTERNATIONAL COMPUTER, INC.

486-PIO-2 (REV. A2)

... continued from previous page

DRAM CONFIGURATION (CON'T)				
Size	Bank 0	Bank 1	Bank 2	Bank 3
6MB	None	(1) 1M x 36	(1) 256K x 36	(1) 256K x 36
6MB	(1) 1M x 36	None	(1) 256K x 36	(1) 256K x 36
7MB	(1) 256K x 36	(1) 1M x 36	(1) 256K x 36	(1) 256K x 36
7MB	(1) 1M x 36	(1) 256K x 36	(1) 256K x 36	(1) 256K x 36
8MB	(1) 1M x 36	(1) 1M x 36	None	None
8MB	(1) 1M x 36	None	(1) 1M x 36	None
8MB	None	None	(1) 1M x 36	(1) 1M x 36
8MB	None	(1) 1M x 36	(1) 1M x 36	None
9MB	(1) 256K x 36	(1) 1M x 36	(1) 1M x 36	None
9MB	(1) 1M x 36	(1) 256K x 36	(1) 1M x 36	None
9MB	(1) 1M x 36	(1) 1M x 36	(1) 256K x 36	None
9MB	None	(1) 256K x 36	(1) 1M x 36	(1) 1M x 36
9MB	(1) 256K x 36	None	(1) 1M x 36	(1) 1M x 36
10MB	(1) 256K x 36	(1) 256K x 36	(1) 1M x 36	(1) 1M x 36
10MB	(1) 1M x 36	(1) 1M x 36	(1) 256K x 36	(1) 256K x 36
12MB	(1) 1M x 36	(1) 1M x 36	(1) 1M x 36	None
12MB	None	(1) 1M x 36	(1) 1M x 36	(1) 1M x 36
12MB	(1) 1M x 36	None	(1) 1M x 36	(1) 1M x 36
13MB	(1) 256K x 36	(1) 1M x 36	(1) 1M x 36	(1) 1M x 36
13MB	(1) 1M x 36	(1) 256K x 36	(1) 1M x 36	(1) 1M x 36
16MB	None	(1) 4M x 36	None	None
16MB	None	None	(1) 4M x 36	None
16MB	(1) 1M x 36	(1) 1M x 36	(1) 1M x 36	(1) 1M x 36
17MB	(1) 256K x 36	(1) 4M x 36	None	None
17MB	(1) 256K x 36	None	(1) 4M x 36	None
17MB	None	(1) 256K x 36	(1) 4M x 36	None
17MB	None	(1) 4M x 36	(1) 256K x 36	None
18MB	(1) 256K x 36	(1) 256K x 36	(1) 4M x 36	None
18MB	(1) 256K x 36	(1) 4M x 36	(1) 256K x 36	None
18MB	None	(1) 4M x 36	(1) 256K x 36	(1) 256K x 36
19MB	(1) 256K x 36	(1) 4M x 36	(1) 256K x 36	(1) 256K x 36
20MB	(1) 1M x 36	(1) 4M x 36	None	None
20MB	(1) 1M x 36	None	(1) 4M x 36	None
20MB	None	(1) 4M x 36	(1) 1M x 36	None
20MB	None	(1) 1M x 36	(1) 4M x 36	None
21MB	(1) 256K x 36	(1) 1M x 36	(1) 4M x 36	None
21MB	(1) 256K x 36	(1) 4M x 36	(1) 1M x 36	None
21MB	(1) 1M x 36	(1) 256K x 36	(1) 4M x 36	None
21MB	(1) 1M x 36	(1) 4M x 36	(1) 256K x 36	None
22MB	(1) 1M x 36	(1) 4M x 36	(1) 256K x 36	(1) 256K x 36
24MB	(1) 1M x 36	(1) 1M x 36	(1) 4M x 36	None
24MB	(1) 1M x 36	(1) 4M x 36	(1) 1M x 36	None

Continued on next page. . .

FIRST INTERNATIONAL COMPUTER, INC.
486-PIO-2 (REV. A2)

... continued from previous page

DRAM CONFIGURATION (CON'T)				
Size	Bank 0	Bank 1	Bank 2	Bank 3
24MB	None	(1) 4M x 36	(1) 1M x 36	(1) 1M x 36
25MB	(1) 256K x 36	(1) 4M x 36	(1) 1M x 36	(1) 1M x 36
28MB	(1) 1M x 36	(1) 4M x 36	(1) 1M x 36	(1) 1M x 36
33MB	(1) 256K x 36	(1) 4M x 36	(1) 4M x 36	None
33MB	(1) 256K x 36	None	(1) 4M x 36	(1) 4M x 36
34MB	(1) 256K x 36	(1) 256K x 36	(1) 4M x 36	(1) 4M x 36
36MB	(1) 1M x 36	(1) 4M x 36	(1) 4M x 36	None
36MB	None	(1) 1M x 36	(1) 4M x 36	(1) 4M x 36
36MB	(1) 1M x 36	None	(1) 4M x 36	(1) 4M x 36
37MB	(1) 256K x 36	(1) 1M x 36	(1) 4M x 36	(1) 4M x 36
37MB	(1) 1M x 36	(1) 256K x 36	(1) 4M x 36	(1) 4M x 36
40MB	(1) 1M x 36	(1) 1M x 36	(1) 4M x 36	(1) 4M x 36
48MB	None	(1) 4M x 36	(1) 4M x 36	(1) 4M x 36
49MB	(1) 256K x 36	(1) 4M x 36	(1) 4M x 36	(1) 4M x 36
52MB	(1) 1M x 36	(1) 4M x 36	(1) 4M x 36	(1) 4M x 36
64MB	None	(1) 8M x 36	(1) 8M x 36	None
65MB	(1) 256K x 36	(1) 16M x 36	None	None
65MB	(1) 256K x 36	(1) 8M x 36	(1) 8M x 36	None
66MB	(1) 256K x 36	(1) 256K x 36	(1) 8M x 36	(1) 8M x 36
66MB	(1) 256K x 36	(1) 8M x 36	(1) 256K x 36	(1) 8M x 36
66MB	(1) 8M x 36	(1) 8M x 36	(1) 256K x 36	(1) 256K x 36
68MB	(1) 1M x 36	(1) 8M x 36	(1) 8M x 36	None
68MB	None	(1) 1M x 36	(1) 8M x 36	(1) 8M x 36
68MB	(1) 8M x 36	(1) 8M x 36	(1) 1M x 36	None
69MB	(1) 256K x 36	(1) 1M x 36	(1) 8M x 36	(1) 8M x 36
69MB	(1) 256K x 36	(1) 8M x 36	(1) 1M x 36	(1) 8M x 36
69MB	(1) 1M x 36	(1) 256K x 36	(1) 8M x 36	(1) 8M x 36
69MB	(1) 1M x 36	(1) 8M x 36	(1) 256K x 36	(1) 8M x 36
72MB	(1) 1M x 36	(1) 1M x 36	(1) 8M x 36	(1) 8M x 36
72MB	(1) 1M x 36	(1) 8M x 36	(1) 1M x 36	(1) 8M x 36
72MB	(1) 8M x 36	(1) 8M x 36	(1) 1M x 36	(1) 1M x 36
80MB	(1) 8M x 36	(1) 4M x 36	(1) 8M x 36	None
80MB	(1) 8M x 36	(1) 8M x 36	(1) 4M x 36	None
81MB	(1) 256K x 36	(1) 4M x 36	(1) 8M x 36	(1) 8M x 36
81MB	(1) 256K x 36	(1) 8M x 36	(1) 4M x 36	(1) 8M x 36
84MB	(1) 1M x 36	(1) 4M x 36	(1) 8M x 36	(1) 8M x 36
84MB	(1) 1M x 36	(1) 8M x 36	(1) 4M x 36	(1) 8M x 36
96MB	(1) 8M x 36	(1) 8M x 36	(1) 8M x 36	None
97MB	(1) 256K x 36	(1) 8M x 36	(1) 8M x 36	(1) 8M x 36
128MB	(1) 8M x 36	(1) 8M x 36	(1) 8M x 36	(1) 8M x 36

Continued on next page...

FIRST INTERNATIONAL COMPUTER, INC.

486-PIO-2 (REV. A2)

... continued from previous page

CACHE CONFIGURATION		
Size	Bank 0	TAG
128KB	(4) 32K x 8	(1) 8K x 8
256KB	(4) 64K x 8	(1) 32K x 8
512KB	(4) 128K x 8	(1) 32K x 8

CACHE JUMPER CONFIGURATION		
Size	JS1	JS2
128KB	Pins 1 & 2 closed	Pins 1 & 2 closed
256KB	Pins 2 & 3 closed	Pins 1 & 2 closed
512KB	Pins 2 & 3 closed	Pins 2 & 3 closed

CPU SPEED SELECTION				
Speed	JK1	JK2	JK3	JK4
25MHz	Pins 2 & 3 closed	Pins 1 & 2 closed	Pins 2 & 3 closed	Pins 1 & 2 closed
33MHz	Pins 2 & 3 closed	Pins 2 & 3 closed	Pins 1 & 2 closed	Pins 1 & 2 closed
40MHz	Pins 1 & 2 closed	Pins 1 & 2 closed	Pins 2 & 3 closed	Pins 1 & 2 closed
50iMHz	Pins 2 & 3 closed	Pins 1 & 2 closed	Pins 2 & 3 closed	Pins 1 & 2 closed
50MHz	Pins 2 & 3 closed	Pins 1 & 2 closed	Pins 2 & 3 closed	Pins 2 & 3 closed
66iMHz	Pins 2 & 3 closed	Pins 2 & 3 closed	Pins 1 & 2 closed	Pins 1 & 2 closed
75iMHz	Pins 2 & 3 closed	Pins 1 & 2 closed	Pins 2 & 3 closed	Pins 1 & 2 closed
80iMHz	Pins 1 & 2 closed	Pins 1 & 2 closed	Pins 2 & 3 closed	Pins 1 & 2 closed
100iMHz	Pins 2 & 3 closed	Pins 2 & 3 closed	Pins 1 & 2 closed	Pins 1 & 2 closed

CPU TYPE SELECTION				
Type	JC2	JC3	JC4	JC5
80486SX	Open	Pins 2 & 3 closed	Pins 2 & 3 closed	Open
CX486DX	Open	Pins 1 & 2 closed	Pins 1 & 2 closed	Open
SL80486DX	Pins 2 & 3 closed	Pins 1 & 2 closed	Pins 1 & 2 closed	Open
UMCU5SD	Open	Pins 1 & 2 closed	Pins 1 & 2 closed	Open
UMCU5S	Open	Pins 2 & 3 closed	Pins 2 & 3 closed	Open
UMCU5SLV	Open	Pins 2 & 3 closed	Pins 2 & 3 closed	Open
CX486DX2	Open	Pins 1 & 2 closed	Pins 1 & 2 closed	Open
AM486DX2	Open	Pins 1 & 2 closed	Pins 1 & 2 closed	Open
(SL)AM486DX2	Pins 2 & 3 closed	Pins 1 & 2 closed	Pins 1 & 2 closed	Open
SL80486DX2	Pins 2 & 3 closed	Pins 1 & 2 closed	Pins 1 & 2 closed	Open
AM486DX4	Open	Pins 1 & 2 closed	Pins 1 & 2 closed	Open
(SL)AM486DX4	Pins 1 & 2 closed	Pins 1 & 2 closed	Pins 1 & 2 closed	Open
80486DX4 (ODP)	Pins 1 & 2 closed	Pins 1 & 2 closed	Pins 1 & 2 closed	Open
80486DX4 (2x)	Pins 2 & 3 closed	Pins 1 & 2 closed	Pins 1 & 2 closed	Open
80486DX4 (3x)	Pins 1 & 2 closed	Pins 1 & 2 closed	Pins 1 & 2 closed	Open
P24D	Pins 1 & 2 closed	Pins 1 & 2 closed	Pins 1 & 2 closed	Open
P24S	Pins 2 & 3 closed	Pins 1 & 2 closed	Pins 1 & 2 closed	Open
P24T	Pins 1 & 2 closed	Pins 1 & 2 closed	Pins 1 & 2 closed	Closed
CXM1	Pins 1 & 2 closed	Pins 1 & 2 closed	Pins 1 & 2 closed	Open

Continued on next page. . .

FIRST INTERNATIONAL COMPUTER, INC.

486-PIO-2 (REV. A2)

... continued from previous page

CPU TYPE SELECTION (CON'T)			
Type	RNA	RNC	RNI
80486SX	Not installed	Not installed	Pins 1 - 5 closed
CX486DX	Not installed	Installed	Not installed
SL80486DX	Not installed	Not installed	Pins 1 - 5 closed
UMCU5SD	Installed	Not installed	Not installed
UMCU5S	Installed	Not installed	Not installed
UMCU5SLV	Installed	Not installed	Not installed
CX486DX2	Not installed	Installed	Not installed
AM486DX2	Installed	Not installed	Not installed
(SL)AM486DX2	Not installed	Not installed	Pins 6 - 10 closed
SL80486DX2	Not installed	Not installed	Pins 1 - 5 closed
AM486DX4	Installed	Not installed	Not installed
(SL)AM486DX4	Not installed	Not installed	Pins 6 - 10 closed
80486DX4 (ODP)	Not installed	Not installed	Pins 1 - 5 closed
80486DX4 (2x)	Not installed	Not installed	Pins 1 - 5 closed
80486DX4 (3x)	Not installed	Not installed	Pins 1 - 5 closed
P24D	Not installed	Not installed	Pins 1 - 5 closed
P24S	Not installed	Not installed	Pins 1 - 5 closed
P24T	Not installed	Not installed	Pins 1 - 5 closed
CXM1	Not installed	Not installed	Pins 6 - 10 closed

CPU VOLTAGE SELECTION			
Voltage	CN3V	JPW1	JPW2
3.3v	Open	1 & 2	Open
3.45v	Open	2 & 3	Open
3.6v	Open	Open	1 & 2
4v	Open	Open	2 & 3
5v	1, & 2, 3 & 4, 13 & 14, 15 & 16	N/A	N/A

Note: Pins designated should be in the closed position.

PCI-BUS CLOCK SELECTION		
CPU clock	JCK	JT1
<= 33MHz	Pins 1 & 2 closed	Pins 1 & 2 closed
>33 MHz	Pins 2 & 3 closed	Pins 2 & 3 closed

DMA CHANNEL SELECTION		
Channel	JEPP1	JEPP2
1	Pins 2 & 3 closed	Pins 2 & 3 closed
3	Pins 1 & 2 closed	Pins 1 & 2 closed

Continued on next page...

FIRST INTERNATIONAL COMPUTER, INC.

486-PIO-2 (REV. A2)

... continued from previous page

KEYBOARD SELECTION				
Setting	JX3	RN1	RN16	RN19
í Internal controller	Pins 1 & 2 closed	Not installed	Installed	Not installed
External controller	Pins 2 & 3 closed	Installed	Not installed	Installed

PRINTER PORT SELECTION		
Setting	JH	JG
í Output	Pins 2 & 3 closed	Pins 2 & 3 closed
Input	Pins 1 & 2 closed	Pins 1 & 2 closed
Bidirectional	Pins 2 & 3 closed	N/A