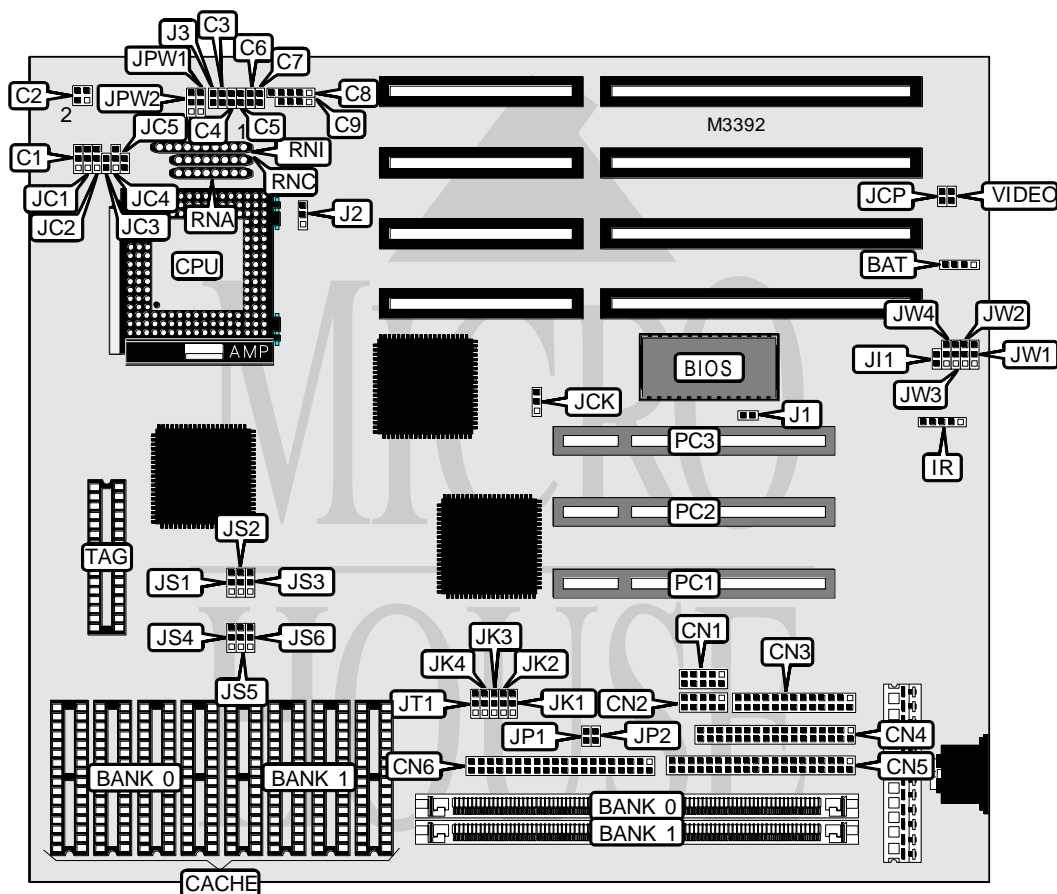


FIRST INTERNATIONAL COMPUTER, INC.

486-PIO-3 (REV. A1)

Processor	80486SX/UMCU5SD/CX486DX/80486DX/UMCU5S/UMCU5SLV/ CX486DX2/TI486DX2/AM486DX2/(SL)AM486DX2/ 80486DX2/ 80486DX4ODP/CX486DX4/TI486DX4/AM486DX4/(SL)AM486DX4/ 80486DX4/AMK5/P24D/P24S/P24T/CX5X86
Processor Speed	25/33/40/50(internal)/50/66(internal)/75(internal)/80(internal)/ 100(internal)/133(internal)MHz
Chip Set	VIA
Video Chip Set	None
Maximum Onboard Memory	64MB
Maximum Video Memory	None
Cache	128/256/512/1024KB
BIOS	Award
Dimensions	254mm x 218mm
I/O Options	32-bit PCI slots (3), floppy drive interface, green PC connector, IDE interfaces (2), parallel port, serial ports (2), IR connector
NPU Options	None



Continued on next page . . .

FIRST INTERNATIONAL COMPUTER, INC.

486-PIO-3 (REV. A1)

... continued from previous page

CONNECTIONS			
Purpose	Location	Purpose	Location
External battery	BAT	Serial port 1	CN1
Chassis fan power	C1	Serial port 2	CN2
Green PC connector	C3	Parallel port	CN3
Outlet connector	C4	Floppy drive interface	CN4
Turbo/green PC LED	C5	IDE interface 2	CN5
IDE interface LED	C6	IDE interface 1	CN6
Reset switch	C7	IR connector	IR
Power LED & keylock	C8	32-bit PCI slots	PC1 - PC3
Speaker	C9		

USER CONFIGURABLE SETTINGS		
Function	Label	Position
Flash BIOS type select Intel 28F00BX-T1	J1	Pins 1 & 2 closed
Flash BIOS type select SST 29EE010	J1	Pins 2 & 3 closed
í KB_LOCK mode select KB_LOCK	J2	Pins 2 & 3 closed
KB_LOCK mode select IOCHCK	J2	Pins 1 & 2 closed
í Turbo LED used as turbo LED	J3	Open
Turbo LED used as green PC LED	J3	Closed
í Password normal operation	JCP	Open
Password clear	JCP	Closed
í Parallel port bidirectional	J11	Open
Parallel port unidirectional	J11	Closed
Jumper information unavailable	JP1	Unidentified
Jumper information unavailable	JP2	Unidentified
Monitor type select monochrome/EGA/VGA	VIDEO	Closed
Monitor type select CGA	VIDEO	Open

DRAM CONFIGURATION		
Size	Bank 0	Bank 1
1MB	(1) 256K x 36	None
2MB	(1) 256K x 36	(1) 256K x 36
4MB	(1) 1M x 36	None
5MB	(1) 1M x 36	(1) 256K x 36
8MB	(1) 1M x 36	(1) 1M x 36
16MB	(1) 4M x 36	None
17MB	(1) 4M x 36	(1) 256K x 36
20MB	(1) 4M x 36	(1) 1M x 36
32MB	(1) 8M x 36	None
33MB	(1) 8M x 36	(1) 256K x 36
36MB	(1) 8M x 36	(1) 1M x 36
48MB	(1) 8M x 36	(1) 4M x 36
64MB	(1) 8M x 36	(1) 8M x 36

Continued on next page...

FIRST INTERNATIONAL COMPUTER, INC.

486-PIO-3 (REV. A1)

... continued from previous page

CACHE CONFIGURATION			
Size	Bank 0	Bank 1	TAG
128KB	(4) 32K x 8	None	(1) 8K/32K x 8
256KB (A)	(4) 32K x 8	(4) 32K x 8	(1) 32K x 8
256KB (B)	(4) 64K x 8	None	(1) 32K x 8
512KB (A)	(4) 128K x 8	None	(1) 32K x 8
512KB (B)	(4) 64K x 8	(4) 64K x 8	(1) 32K/64K x 8
1MB	(4) 128K x 8	(4) 128K x 8	(1) 64K/128K x 8

CACHE JUMPER CONFIGURATION						
Size	JS1	JS2	JS3	JS4	JS5	JS6
128KB	1 & 2	1 & 2	1 & 2	1 & 2	1 & 2	1 & 2
256KB (A)	2 & 3	2 & 3	1 & 2	1 & 2	1 & 2	1 & 2
256KB (B)	2 & 3	2 & 3	1 & 2	1 & 2	1 & 2	1 & 2
512KB (A)	2 & 3	2 & 3	2 & 3	1 & 2	2 & 3	1 & 2
512KB (B)	2 & 3	2 & 3	2 & 3	1 & 2	2 & 3	1 & 2
1MB	2 & 3	2 & 3	2 & 3	2 & 3	2 & 3	2 & 3

Note: Pins designated should be in the closed position.

CPU SPEED SELECTION				
Speed	JK1	JK2	JK3	JK4
25MHz	Pins 2 & 3 closed	Pins 1 & 2 closed	Pins 2 & 3 closed	Pins 1 & 2 closed
33MHz	Pins 2 & 3 closed	Pins 2 & 3 closed	Pins 1 & 2 closed	Pins 1 & 2 closed
40MHz	Pins 1 & 2 closed	Pins 1 & 2 closed	Pins 2 & 3 closed	Pins 1 & 2 closed
50iMHz	Pins 2 & 3 closed	Pins 1 & 2 closed	Pins 2 & 3 closed	Pins 1 & 2 closed
50MHz	Pins 1 & 2 closed	Pins 2 & 3 closed	Pins 1 & 2 closed	Pins 1 & 2 closed
66iMHz	Pins 2 & 3 closed	Pins 2 & 3 closed	Pins 1 & 2 closed	Pins 1 & 2 closed
75iMHz	Pins 2 & 3 closed	Pins 1 & 2 closed	Pins 2 & 3 closed	Pins 1 & 2 closed
80iMHz	Pins 1 & 2 closed	Pins 1 & 2 closed	Pins 2 & 3 closed	Pins 1 & 2 closed
100iMHz	Pins 2 & 3 closed	Pins 2 & 3 closed	Pins 1 & 2 closed	Pins 1 & 2 closed
133iMHz	Pins 2 & 3 closed	Pins 2 & 3 closed	Pins 1 & 2 closed	Pins 1 & 2 closed

Continued on next page...

FIRST INTERNATIONAL COMPUTER, INC.
486-PIO-3 (REV. A1)

... continued from previous page

CPU TYPE SELECTION					
Type	JC1	JC2	JC3	JC4	JC5
80486SX	2 & 3	2 & 3	Open	Open	Open
UMC U5SD	1 & 2	1 & 2	Open	Open	Open
CX486DX	1 & 2	1 & 2	Open	Open	Open
80486DX	1 & 2	1 & 2	Open	2 & 3	Open
U5S	2 & 3	2 & 3	Open	Open	Open
U5SLV	2 & 3	2 & 3	Open	Open	Open
CX486DX2	1 & 2	1 & 2	Open	Open	Open
TI486DX2	1 & 2	1 & 2	Open	Open	Open
AM486DX2	1 & 2	1 & 2	Closed	Open	Open
(SL)AM486DX2	1 & 2	1 & 2	Open	2 & 3	Open
80486DX2	1 & 2	1 & 2	Open	2 & 3	Open
CX486DX4	1 & 2	1 & 2	Open	1 & 2	Open
TI486DX4	1 & 2	1 & 2	Open	Open	Open
AM486DX4	1 & 2	1 & 2	Open	Open	Open
(SL)AM486DX4	1 & 2	1 & 2	Open	1 & 2	Open
80486DX4ODP	1 & 2	1 & 2	Open	1 & 2	Open
80486DX4 (2x)	1 & 2	1 & 2	Open	2 & 3	Open
80486DX4 (3x)	1 & 2	1 & 2	Open	1 & 2	Open
AM X5	1 & 2	1 & 2	Open	2 & 3	Open
P24D	1 & 2	1 & 2	Open	1 & 2	Open
P24S	1 & 2	1 & 2	Open	2 & 3	Open
P24T	1 & 2	1 & 2	Open	1 & 2	Closed
CX5X86	1 & 2	1 & 2	Open	1 & 2	Open

Note: Pins designated should be in the closed position.

Continued on next page...

FIRST INTERNATIONAL COMPUTER, INC.

486-PIO-3 (REV. A1)

... continued from previous page

CPU TYPE SELECTION			
Type	RNA	RNC	RNI
80486SX	Not installed	Not installed	Pins 1 - 8 closed
UMC U5SD	Installed	Not installed	Not installed
CX486DX	Not installed	Installed	Not installed
80486DX	Not installed	Not installed	Pins 1 - 8 closed
U5S	Installed	Not installed	Not installed
U5SLV	Installed	Not installed	Not installed
CX486DX2	Not installed	Installed	Not installed
TI486DX2	Not installed	Installed	Not installed
AM486DX2	Installed	Not installed	Not installed
(SL)AM486DX2	Not installed	Not installed	Pins 1 - 8 closed
80486DX2	Not installed	Not installed	Pins 1 - 8 closed
CX486DX4	Not installed	Not installed	Pins 1 - 8 closed
TI486DX4	Not installed	Installed	Not installed
AM486DX4	Installed	Not installed	Not installed
(SL)AM486DX4	Not installed	Not installed	Pins 1 - 8 closed
80486DX4ODP	Not installed	Not installed	Pins 1 - 8 closed
80486DX4 (2x)	Not installed	Not installed	Pins 1 - 8 closed
80486DX4 (3x)	Not installed	Not installed	Pins 1 - 8 closed
AM X5	Not installed	Not installed	Pins 1 - 8 closed
P24D	Not installed	Not installed	Pins 1 - 8 closed
P24S	Not installed	Not installed	Pins 1 - 8 closed
P24T	Not installed	Not installed	Pins 1 - 8 closed
CX5X86	Not installed	Not installed	Pins 1 - 8 closed

CPU VOLTAGE SELECTION			
Voltage	C2	JPW1	JPW2
3.3v	Open	Pins 1 & 2 closed	Open
3.45v	Open	Pins 2 & 3 closed	Open
3.6v	Open	Open	Pins 1 & 2 closed
4v	Open	Open	Pins 2 & 3 closed
5v	Pins 1 & 2, 3 & 4 closed	N/A	N/A

PCI BUS SPEED SELECTION		
CPU Clock	JCK	JT1
í ≤ 33MHz (PCI clock = CPU clock)	Pins 1 & 2 closed	Pins 1 & 2 closed
>33 MHz (PCI clock = CPU clock/2)	Pins 2 & 3 closed	Pins 2 & 3 closed

DMA CHANNEL SELECTION		
Channel	JW3	JW4
í 1	Pins 1 & 2 closed	Pins 1 & 2 closed
3	Pins 2 & 3 closed	Pins 2 & 3 closed

SERIAL PORT 2 SELECTION		
Setting	JW1	JW2
Used as Serial port 2	Pins 1 & 2 closed	Pins 1 & 2 closed
Used as IR connector	Pins 2 & 3 closed	Pins 2 & 3 closed

