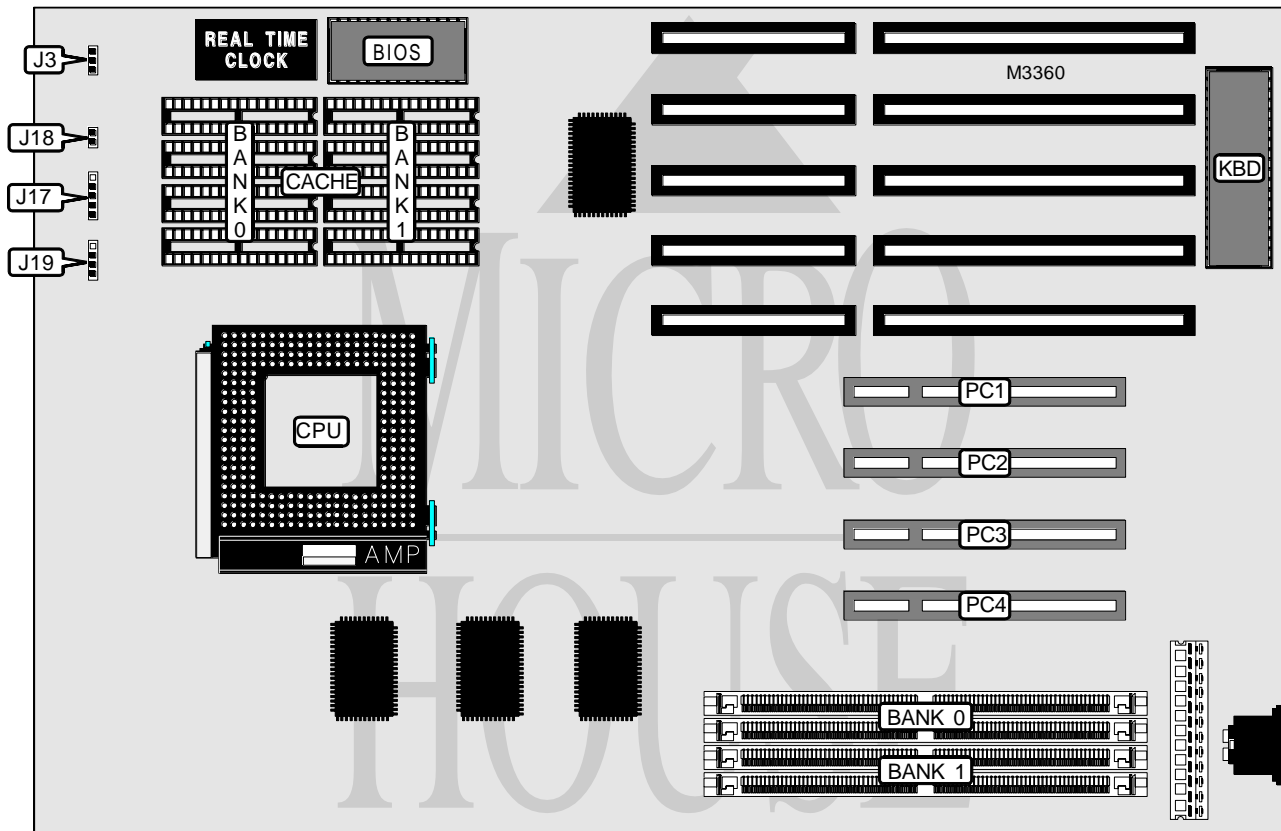


SPRINT MANUFACTURING CORPORATION

MB - P 5 N S P

Processor	Pentium
Processor Speed	75/90/100/120MHz
Chip Set	Intel
Video Chip Set	None
Maximum Onboard Memory	128MB
Maximum Video Memory	None
Cache	256/512KB
BIOS	AMI
Dimensions	330mm x 218mm
I/O Options	32-bit PCI slots (4)
NPU Options	None



THE LOCATION OF ALL JUMPERS EXCEPT FOR THE FOUR SHOWN ARE UNIDENTIFIED

CONNECTIONS			
Purpose	Location	Purpose	Location
Power LED & keylock	J17	Speaker	J19
Reset switch	J18	32-bit PCI slots	PC1 - PC4

Continued on next page. . .

SPRINT MANUFACTURING CORPORATION
MB - P 5 N S P

... continued from previous page

USER CONFIGURABLE SETTINGS		
Function	Label	Position
Flash BIOS voltage select 12v (flash programming enabled)	J11	Pins 1 & 2 closed
Flash BIOS voltage select 5v (flash programming disabled)	J11	Pins 2 & 3 closed
Monitor type select color	J25	Closed
Monitor type select monochrome	J25	Open

DRAM CONFIGURATION		
Size	Bank 0	Bank 1
2MB	(2) 256K x 36	None
4MB	(2) 512K x 36	None
4MB	(2) 256K x 36	(2) 256K x 36
6MB	(2) 512K x 36	(2) 256K x 36
6MB	(2) 256K x 36	(2) 512K x 36
8MB	(2) 1M x 36	None
8MB	(2) 512K x 36	(2) 512K x 36
10MB	(2) 1M x 36	(2) 256K x 36
10MB	(2) 256K x 36	(2) 1M x 36
12MB	(2) 1M x 36	(2) 512K x 36
12MB	(2) 512K x 36	(2) 1M x 36
16MB	(2) 2M x 36	None
16MB	(2) 1M x 36	(2) 1M x 36
18MB	(2) 2M x 36	(2) 256K x 36
18MB	(2) 256K x 36	(2) 2M x 36
20MB	(2) 2M x 36	(2) 512K x 36
20MB	(2) 512K x 36	(2) 2M x 36
24MB	(2) 2M x 36	(2) 1M x 36
24MB	(2) 1M x 36	(2) 2M x 36
32MB	(2) 4M x 36	None
32MB	(2) 2M x 36	(2) 2M x 36
34MB	(2) 4M x 36	(2) 256K x 36
34MB	(2) 256K x 36	(2) 4M x 36
36MB	(2) 4M x 36	(2) 512K x 36
36MB	(2) 512K x 36	(2) 4M x 36
40MB	(2) 4M x 36	(2) 1M x 36
40MB	(2) 1M x 36	(2) 4M x 36
48MB	(2) 4M x 36	(2) 2M x 36
48MB	(2) 2M x 36	(2) 4M x 36
64MB	(2) 8M x 36	None
64MB	(2) 4M x 36	(2) 4M x 36
66MB	(2) 8M x 36	(2) 256K x 36
66MB	(2) 256K x 36	(2) 8M x 36
68MB	(2) 8M x 36	(2) 512K x 36
68MB	(2) 512K x 36	(2) 8M x 36

Continued on next page...

SPRINT MANUFACTURING CORPORATION

MB - P 5 N S P

... continued from previous page

DRAM CONFIGURATION (CON'T)		
Size	Bank 0	Bank 1
72MB	(2) 8M x 36	(2) 1M x 36
72MB	(2) 1M x 36	(2) 8M x 36
80MB	(2) 8M x 36	(2) 2M x 36
80MB	(2) 2M x 36	(2) 8M x 36
96MB	(2) 8M x 36	(2) 4M x 36
96MB	(2) 4M x 36	(2) 8M x 36
128MB	(2) 8M x 36	(2) 8M x 36

Note: Board also accepts x 32 SIMMs.

CACHE CONFIGURATION		
Size	Bank 0	Bank 1
256KB	(4) 32K x 8	(4) 32K x 8
512KB	(4) 64K x 8	(4) 64K x 8

CACHE JUMPER CONFIGURATION	
Size	J3
256KB	Pins 1 & 2 closed
512KB	Pins 2 & 3 closed

CPU SPEED SELECTION	
Speed	J1
75MHz	Pins 1 & 2 closed
90MHz	Pins 1 & 2 closed
100MHz	Pins 2 & 3 closed
120MHz	Pins 2 & 3 closed