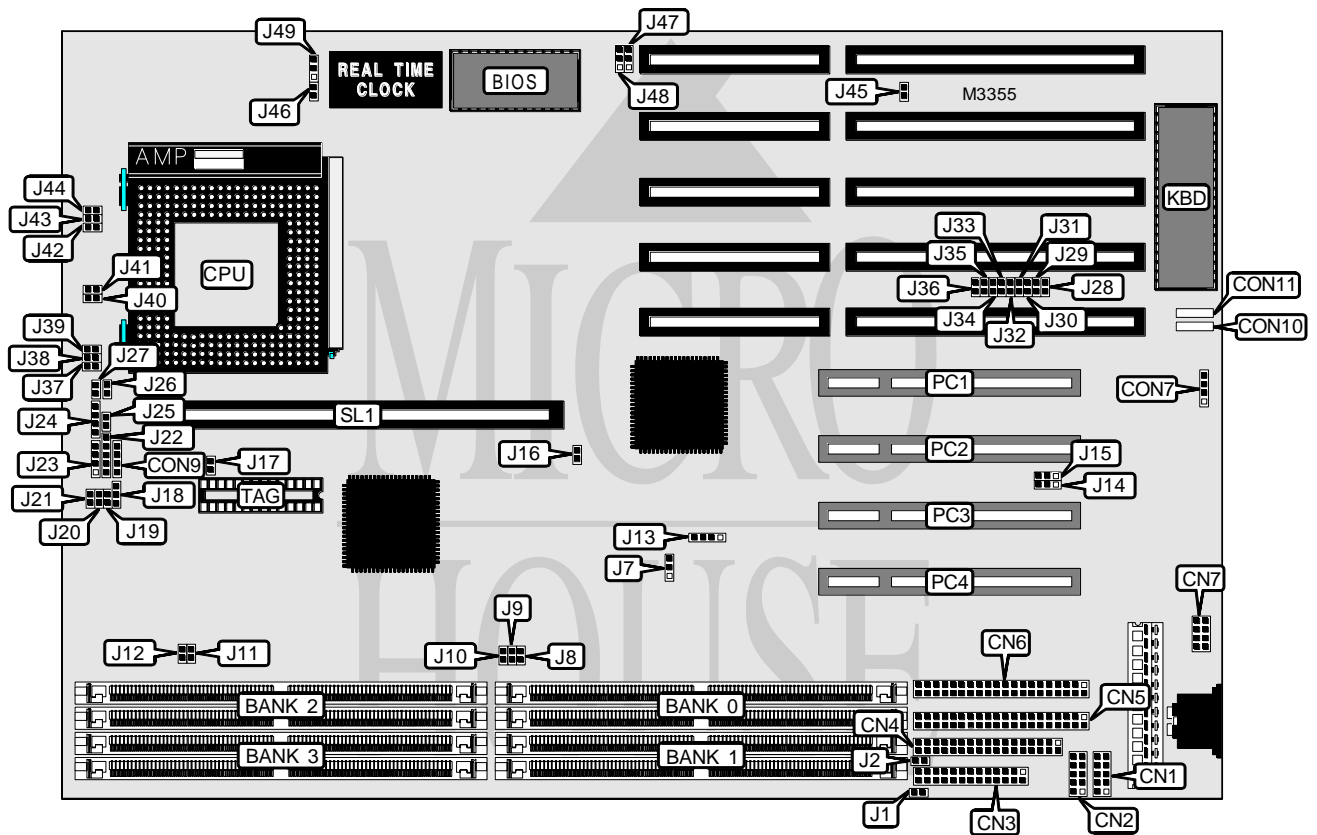


TYAN COMPUTER CORPORATION S1562S (REV. 1.0)

Processor	CX M1/Pentium
Processor Speed	75/90/100/120/133/150/166/200MHz
Chip Set	Intel
Video Chip Set	None
Maximum Onboard Memory	512MB DRAM (EDO supported)
Maximum Video Memory	None
Cache	None
BIOS	AMI/Award
Dimensions	330mm x 218mm
I/O Options	32-bit PCI slots (4), floppy drive interface, IDE interfaces (2), parallel port, PS/2 mouse interface, serial ports (2), cache slot, IR connectors (2)
NPU Options	None



Continued on next page...

TYAN COMPUTER CORPORATION

S1562S (REV. 1.0)

... continued from previous page

CONNECTIONS			
Purpose	Location	Purpose	Location
Serial port 2	CN1	Power LED & keylock	J22
Serial port 1	CN2	Speaker	J23
Parallel port	CN3	IDE interface LED	J24
Floppy drive interface	CN4	Turbo LED	J25
IDE interface 1	CN5	Turbo switch	J26
IDE interface 2	CN6	Reset switch	J27
PS/2 mouse interface	CN7	32-bit PCI slots	PC1 - PC4
IR connector	CON7	Cache slot	SL1
IR connector	CON9		

USER CONFIGURABLE SETTINGS		
Function	Label	Position
Jumper information unavailable	CON10	Unidentified
Jumper information unavailable	CON11	Unidentified
í Factory configured - do not alter	J7	Pins 1 & 2 closed
Jumper information unavailable	J16	Unidentified
Jumper information unavailable	J17	Unidentified
Jumper information unavailable	J18	Unidentified
Jumper information unavailable	J21	Unidentified
Jumper information unavailable	J28	Unidentified
Jumper information unavailable	J29	Unidentified
Jumper information unavailable	J30	Unidentified
Jumper information unavailable	J31	Unidentified
Jumper information unavailable	J32	Unidentified
Jumper information unavailable	J33	Unidentified
Jumper information unavailable	J34	Unidentified
Jumper information unavailable	J35	Unidentified
Jumper information unavailable	J36	Unidentified
í Factory configured - do not alter	J40	Closed
í Factory configured - do not alter	J41	Closed
Jumper information unavailable	J42	Unidentified
Jumper information unavailable	J43	Unidentified
Jumper information unavailable	J44	Unidentified
Jumper information unavailable	J45	Unidentified
í CMOS memory normal operation	J46	Open
CMOS memory clear	J46	Closed
í Factory configured - do not alter	J49	Pins 2 & 3 closed

Continued on next page...

TYAN COMPUTER CORPORATION

S1562S (REV. 1.0)

... continued from previous page

DRAM CONFIGURATION				
Size	Bank 0	Bank 1	Bank 2	Bank 3
2MB	(2) 256K x 36	None	None	None
4MB	(2) 512K x 36	None	None	None
4MB	(2) 256K x 36	(2) 256K x 36	None	None
6MB	(2) 512K x 36	(2) 256K x 36	None	None
6MB	(2) 256K x 36	(2) 256K x 36	(2) 256K x 36	None
6MB	(2) 256K x 36	(2) 512K x 36	None	None
8MB	(2) 1M x 36	None	None	None
8MB	(2) 512K x 36	(2) 256K x 36	(2) 256K x 36	None
8MB	(2) 512K x 36	(2) 512K x 36	None	None
8MB	(2) 256K x 36	(2) 256K x 36	(2) 256K x 36	(2) 256K x 36
10MB	(2) 1M x 36	(2) 256K x 36	None	None
10MB	(2) 512K x 36	(2) 256K x 36	(2) 256K x 36	(2) 256K x 36
10MB	(2) 256K x 36	(2) 512K x 36	(2) 512K x 36	None
10MB	(2) 256K x 36	(2) 1M x 36	None	None
12MB	(2) 1M x 36	(2) 256K x 36	(2) 256K x 36	None
12MB	(2) 1M x 36	(2) 512K x 36	None	None
12MB	(2) 512K x 36	(2) 512K x 36	(2) 512K x 36	None
12MB	(2) 512K x 36	(2) 1M x 36	None	None
14MB	(2) 1M x 36	(2) 256K x 36	(2) 256K x 36	(2) 256K x 36
14MB	(2) 256K x 36	(2) 512K x 36	(2) 512K x 36	(2) 512K x 36
16MB	(2) 2M x 36	None	None	None
16MB	(2) 1M x 36	(2) 512K x 36	(2) 512K x 36	None
16MB	(2) 1M x 36	(2) 1M x 36	None	None
16MB	(2) 512K x 36	(2) 512K x 36	(2) 512K x 36	(2) 512K x 36
18MB	(2) 2M x 36	(2) 256K x 36	None	None
18MB	(2) 256K x 36	(2) 1M x 36	(2) 1M x 36	None
18MB	(2) 256K x 36	(2) 2M x 36	None	None
20MB	(2) 2M x 36	(2) 256K x 36	(2) 256K x 36	None
20MB	(2) 2M x 36	(2) 512K x 36	None	None
20MB	(2) 1M x 36	(2) 512K x 36	(2) 512K x 36	(2) 512K x 36
20MB	(2) 512K x 36	(2) 1M x 36	(2) 1M x 36	None
20MB	(2) 512K x 36	(2) 2M x 36	None	None
22MB	(2) 2M x 36	(2) 256K x 36	(2) 256K x 36	(2) 256K x 36
24MB	(2) 2M x 36	(2) 512K x 36	(2) 512K x 36	None
24MB	(2) 2M x 36	(2) 1M x 36	None	None
24MB	(2) 1M x 36	(2) 1M x 36	(2) 1M x 36	None
24MB	(2) 1M x 36	(2) 2M x 36	None	None
26MB	(2) 256K x 36	(2) 1M x 36	(2) 1M x 36	(2) 1M x 36
28MB	(2) 2M x 36	(2) 512K x 36	(2) 512K x 36	(2) 512K x 36
28MB	(2) 512K x 36	(2) 1M x 36	(2) 1M x 36	(2) 1M x 36
32MB	(2) 4M x 36	None	None	None
32MB	(2) 2M x 36	(2) 1M x 36	(2) 1M x 36	None

Continued on next page...

TYAN COMPUTER CORPORATION
S1562S (REV. 1.0)

... continued from previous page

DRAM CONFIGURATION (CON'T)				
Size	Bank 0	Bank 1	Bank 2	Bank 3
32MB	(2) 2M x 36	(2) 2M x 36	None	None
32MB	(2) 1M x 36	(2) 1M x 36	(2) 1M x 36	(2) 1M x 36
34MB	(2) 4M x 36	(2) 256K x 36	None	None
34MB	(2) 256K x 36	(2) 2M x 36	(2) 2M x 36	None
34MB	(2) 256K x 36	(2) 4M x 36	None	None
36MB	(2) 4M x 36	(2) 256K x 36	(2) 256K x 36	None
36MB	(2) 4M x 36	(2) 512K x 36	None	None
36MB	(2) 512K x 36	(2) 2M x 36	(2) 2M x 36	None
36MB	(2) 512K x 36	(2) 4M x 36	None	None
38MB	(2) 4M x 36	(2) 256K x 36	(2) 256K x 36	(2) 256K x 36
40MB	(2) 4M x 36	(2) 512K x 36	(2) 512K x 36	None
40MB	(2) 4M x 36	(2) 1M x 36	None	None
40MB	(2) 2M x 36	(2) 1M x 36	(2) 1M x 36	(2) 1M x 36
40MB	(2) 1M x 36	(2) 2M x 36	(2) 2M x 36	None
40MB	(2) 1M x 36	(2) 4M x 36	None	None
44MB	(2) 4M x 36	(2) 512K x 36	(2) 512K x 36	(2) 512K x 36
48MB	(2) 4M x 36	(2) 1M x 36	(2) 1M x 36	None
48MB	(2) 4M x 36	(2) 2M x 36	None	None
48MB	(2) 2M x 36	(2) 2M x 36	(2) 2M x 36	None
48MB	(2) 2M x 36	(2) 4M x 36	None	None
50MB	(2) 256K x 36	(2) 2M x 36	(2) 2M x 36	(2) 2M x 36
52MB	(2) 512K x 36	(2) 2M x 36	(2) 2M x 36	(2) 2M x 36
56MB	(2) 4M x 36	(2) 1M x 36	(2) 1M x 36	(2) 1M x 36
56MB	(2) 1M x 36	(2) 2M x 36	(2) 2M x 36	(2) 2M x 36
64MB	(2) 8M x 36	None	None	None
64MB	(2) 4M x 36	(2) 2M x 36	(2) 2M x 36	None
64MB	(2) 4M x 36	(2) 4M x 36	None	None
64MB	(2) 2M x 36	(2) 2M x 36	(2) 2M x 36	(2) 2M x 36
66MB	(2) 8M x 36	(2) 256K x 36	None	None
66MB	(2) 256K x 36	(2) 4M x 36	(2) 4M x 36	None
66MB	(2) 256K x 36	(2) 8M x 36	None	None
68MB	(2) 8M x 36	(2) 256K x 36	(2) 256K x 36	None
68MB	(2) 8M x 36	(2) 512K x 36	None	None
68MB	(2) 512K x 36	(2) 4M x 36	(2) 4M x 36	None
68MB	(2) 512K x 36	(2) 8M x 36	None	None
70MB	(2) 8M x 36	(2) 256K x 36	(2) 256K x 36	(2) 256K x 36
72MB	(2) 8M x 36	(2) 512K x 36	(2) 512K x 36	None
72MB	(2) 8M x 36	(2) 1M x 36	None	None
72MB	(2) 1M x 36	(2) 4M x 36	(2) 4M x 36	None
72MB	(2) 1M x 36	(2) 8M x 36	None	None
76MB	(2) 8M x 36	(2) 512K x 36	(2) 512K x 36	(2) 512K x 36
80MB	(2) 8M x 36	(2) 1M x 36	(2) 1M x 36	None

Continued on next page...

TYAN COMPUTER CORPORATION

S1562S (REV. 1.0)

... continued from previous page

DRAM CONFIGURATION (CON'T)				
Size	Bank 0	Bank 1	Bank 2	Bank 3
80MB	(2) 8M x 36	(2) 2M x 36	None	None
80MB	(2) 4M x 36	(2) 2M x 36	(2) 2M x 36	(2) 2M x 36
80MB	(2) 2M x 36	(2) 4M x 36	(2) 4M x 36	None
80MB	(2) 2M x 36	(2) 8M x 36	None	None
88MB	(2) 8M x 36	(2) 1M x 36	(2) 1M x 36	(2) 1M x 36
96MB	(2) 8M x 36	(2) 2M x 36	(2) 2M x 36	None
96MB	(2) 8M x 36	(2) 4M x 36	None	None
96MB	(2) 4M x 36	(2) 4M x 36	(2) 4M x 36	None
96MB	(2) 4M x 36	(2) 8M x 36	None	None
98MB	(2) 256K x 36	(2) 4M x 36	(2) 4M x 36	(2) 4M x 36
100MB	(2) 512K x 36	(2) 4M x 36	(2) 4M x 36	(2) 4M x 36
104MB	(2) 1M x 36	(2) 4M x 36	(2) 4M x 36	(2) 4M x 36
112MB	(2) 8M x 36	(2) 2M x 36	(2) 2M x 36	(2) 2M x 36
112MB	(2) 2M x 36	(2) 4M x 36	(2) 4M x 36	(2) 4M x 36
128MB	(2) 16M x 36	None	None	None
128MB	(2) 8M x 36	(2) 4M x 36	(2) 4M x 36	None
128MB	(2) 8M x 36	(2) 8M x 36	None	None
128MB	(2) 4M x 36	(2) 4M x 36	(2) 4M x 36	(2) 4M x 36
130MB	(2) 16M x 36	(2) 256K x 36	None	None
130MB	(2) 256K x 36	(2) 8M x 36	(2) 8M x 36	None
130MB	(2) 256K x 36	(2) 16M x 36	None	None
132MB	(2) 16M x 36	(2) 256K x 36	(2) 256K x 36	None
132MB	(2) 16M x 36	(2) 512K x 36	None	None
132MB	(2) 512K x 36	(2) 8M x 36	(2) 8M x 36	None
132MB	(2) 512K x 36	(2) 16M x 36	None	None
134MB	(2) 16M x 36	(2) 256K x 36	(2) 256K x 36	(2) 256K x 36
136MB	(2) 16M x 36	(2) 512K x 36	(2) 512K x 36	None
136MB	(2) 16M x 36	(2) 1M x 36	None	None
136MB	(2) 1M x 36	(2) 8M x 36	(2) 8M x 36	None
136MB	(2) 1M x 36	(2) 16M x 36	None	None
140MB	(2) 16M x 36	(2) 512K x 36	(2) 512K x 36	(2) 512K x 36
144MB	(2) 16M x 36	(2) 1M x 36	(2) 1M x 36	None
144MB	(2) 16M x 36	(2) 2M x 36	None	None
144MB	(2) 2M x 36	(2) 8M x 36	(2) 8M x 36	None
144MB	(2) 2M x 36	(2) 16M x 36	None	None
152MB	(2) 16M x 36	(2) 1M x 36	(2) 1M x 36	(2) 1M x 36
160MB	(2) 16M x 36	(2) 2M x 36	(2) 2M x 36	None
160MB	(2) 16M x 36	(2) 4M x 36	None	None
160MB	(2) 8M x 36	(2) 4M x 36	(2) 4M x 36	(2) 4M x 36
160MB	(2) 4M x 36	(2) 8M x 36	(2) 8M x 36	None
160MB	(2) 4M x 36	(2) 16M x 36	None	None
176MB	(2) 16M x 36	(2) 2M x 36	(2) 2M x 36	(2) 2M x 36

Continued on next page...

TYAN COMPUTER CORPORATION
S1562S (REV. 1.0)

... continued from previous page

DRAM CONFIGURATION (CON'T)				
Size	Bank 0	Bank 1	Bank 2	Bank 3
192MB	(2) 16M x 36	(2) 4M x 36	(2) 4M x 36	None
192MB	(2) 16M x 36	(2) 8M x 36	None	None
192MB	(2) 8M x 36	(2) 8M x 36	(2) 8M x 36	None
192MB	(2) 8M x 36	(2) 16M x 36	None	None
194MB	(2) 256K x 36	(2) 8M x 36	(2) 8M x 36	(2) 8M x 36
196MB	(2) 512K x 36	(2) 8M x 36	(2) 8M x 36	(2) 8M x 36
200MB	(2) 1M x 36	(2) 8M x 36	(2) 8M x 36	(2) 8M x 36
208MB	(2) 2M x 36	(2) 8M x 36	(2) 8M x 36	(2) 8M x 36
224MB	(2) 16M x 36	(2) 4M x 36	(2) 4M x 36	(2) 4M x 36
224MB	(2) 4M x 36	(2) 8M x 36	(2) 8M x 36	(2) 8M x 36
256MB	(2) 16M x 36	(2) 8M x 36	(2) 8M x 36	None
256MB	(2) 16M x 36	(2) 16M x 36	None	None
256MB	(2) 8M x 36	(2) 8M x 36	(2) 8M x 36	(2) 8M x 36
258MB	(2) 256K x 36	(2) 16M x 36	(2) 16M x 36	None
260MB	(2) 512K x 36	(2) 16M x 36	(2) 16M x 36	None
264MB	(2) 1M x 36	(2) 16M x 36	(2) 16M x 36	None
272MB	(2) 2M x 36	(2) 16M x 36	(2) 16M x 36	None
288MB	(2) 4M x 36	(2) 16M x 36	(2) 16M x 36	None
320MB	(2) 16M x 36	(2) 8M x 36	(2) 8M x 36	(2) 8M x 36
320MB	(2) 8M x 36	(2) 16M x 36	(2) 16M x 36	None
384MB	(2) 16M x 36	(2) 16M x 36	(2) 16M x 36	None
386MB	(2) 256K x 36	(2) 16M x 36	(2) 16M x 36	(2) 16M x 36
388MB	(2) 512K x 36	(2) 16M x 36	(2) 16M x 36	(2) 16M x 36
392MB	(2) 1M x 36	(2) 16M x 36	(2) 16M x 36	(2) 16M x 36
400MB	(2) 2M x 36	(2) 16M x 36	(2) 16M x 36	(2) 16M x 36
416MB	(2) 4M x 36	(2) 16M x 36	(2) 16M x 36	(2) 16M x 36
448MB	(2) 8M x 36	(2) 16M x 36	(2) 16M x 36	(2) 16M x 36
512MB	(2) 16M x 36	(2) 16M x 36	(2) 16M x 36	(2) 16M x 36

Note: Board accepts EDO memory.

CACHE CONFIGURATION		
Size	SL1	TAG
256KB	256KB module installed	TAG chip installed
512KB	512KB module installed	TAG chip installed

Note: The size of the TAG chip is unidentified.

Continued on next page...

TYAN COMPUTER CORPORATION

S1562S (REV. 1.0)

... continued from previous page

CPU SPEED SELECTION (CYRIX)			
Speed	J13	J19	J20
120MHz	Pins 1 & 2, 3 & 4 closed	Closed	Open
150MHz	Pins 3 & 4 closed	Closed	Open
166MHz	Pins 1 & 2 closed	Closed	Open

CPU SPEED SELECTION (INTEL)			
Speed	J13	J19	J20
75MHz	Pins 1 & 2, 3 & 4 closed	Open	Open
90MHz	Pins 3 & 4 closed	Open	Open
100MHz	Pins 1 & 2 closed	Open	Open
120MHz	Pins 3 & 4 closed	Closed	Open
133MHz	Pins 1 & 2 closed	Closed	Open
150MHz	Pins 3 & 4 closed	Closed	Closed
166MHz	Pins 1 & 2 closed	Closed	Closed
200MHz	Pins 1 & 2 closed	Open	Closed

CPU VOLTAGE SELECTION							
Voltage	J1	J2	J8	J9	J10	J11	J12
3.3v	Open	Open	Closed	Closed	Closed	Open	Open
5v	Closed	Closed	Open	Open	Open	Closed	Closed

VOLTAGE REGULATOR SELECTION			
Voltage	J37	J38	J39
3.3v	Closed	Open	Open
3.48v	Open	Open	Closed
3.6v	Open	Closed	Open

SERIAL PORT SELECTION		
Setting	J14	J15
Serial port set as COM1 & COM2	Pins 1 & 2 closed	Pins 1 & 2 closed
IR connector	Pins 2 & 3 closed	Pins 2 & 3 closed

FLASH BIOS SELECTION		
Setting	J47	J48
Flash BIOS installed	Pins 1 & 2 closed	Pins 1 & 2 closed