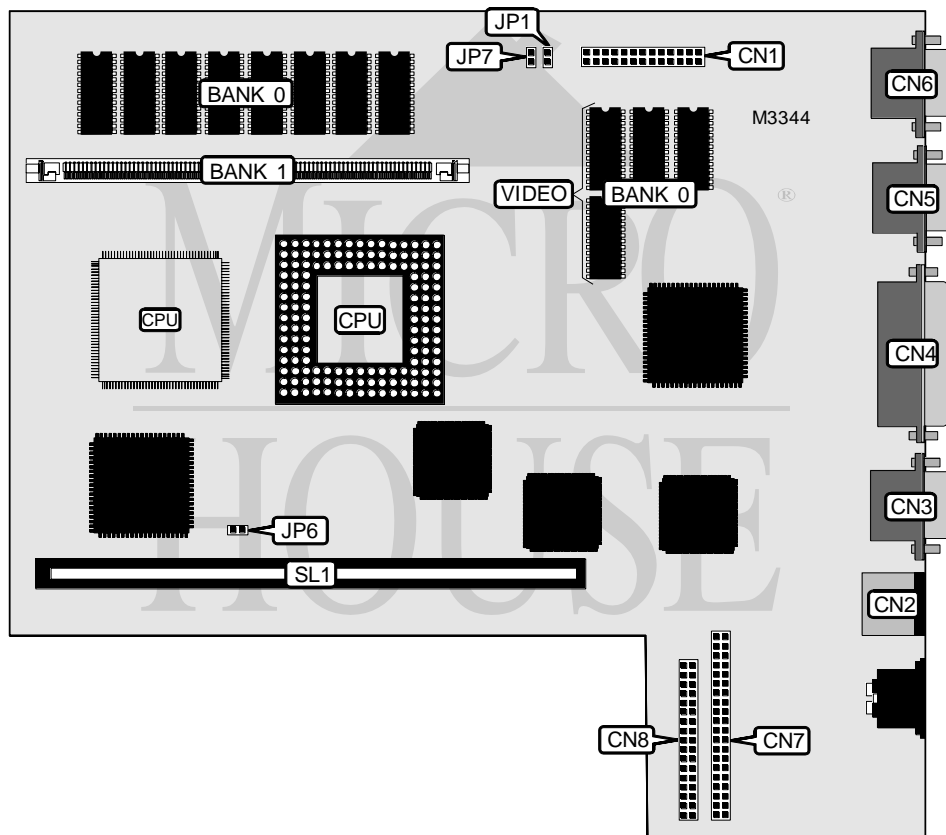


# OLIVETTI M300-28 PCS44 (BA362)

<b>Processor</b>	80486SX/80487SX/80486DX/80486DX2
<b>Processor Speed</b>	25/50(internal)MHz
<b>Chip Set</b>	Unidentified
<b>Video Chip Set</b>	Oak Technology
<b>Maximum Onboard Memory</b>	20MB
<b>Maximum Video Memory</b>	512KB
<b>Cache</b>	None
<b>BIOS</b>	Unidentified
<b>Dimensions</b>	254mm x 218mm
<b>I/O Options</b>	Floppy drive interface, IDE interface, parallel port, PS/2 mouse port, serial port, feature connector, VGA port, riser slot, joystick port
<b>NPU Options</b>	None



CONNECTIONS			
Purpose	Location	Purpose	Location
Feature connector	CN1	VGA port	CN6
PS/2 mouse port	CN2	IDE interface	CN7
Serial port	CN3	Floppy drive interface	CN8
Parallel port	CN4	Riser slot	SL1
Joystick port	CN5		

Continued on next page. . .

**OLIVETTI  
M300-28 PCS44 (BA362)**

... continued from previous page

USER CONFIGURABLE SETTINGS		
Function	Label	Position
í CMOS memory normal operation	JP6	Open
CMOS memory clear	JP6	Closed
í Password normal operation	JP7	Open
Password clear	JP7	Closed

DRAM CONFIGURATION		
Size	Bank 0	Bank 1
4MB	4MB	None
8MB	4MB	(1) 1M x 36
12MB	4MB	(1) 2M x 36
20MB	4MB	(1) 4M x 36

**VIDEO MEMORY CONFIGURATION**  
 Note: 512KB video memory is factory installed and is not configurable.

CPU TYPE SELECTION	
Type	JP1
80486SX (PQFP)	Open
80486DX	Closed
80486DX2	Closed

Note: If 80487SX or Overdrive processor is installed in the PGA socket, system will auto detect CPU and no jumper setting is necessary.