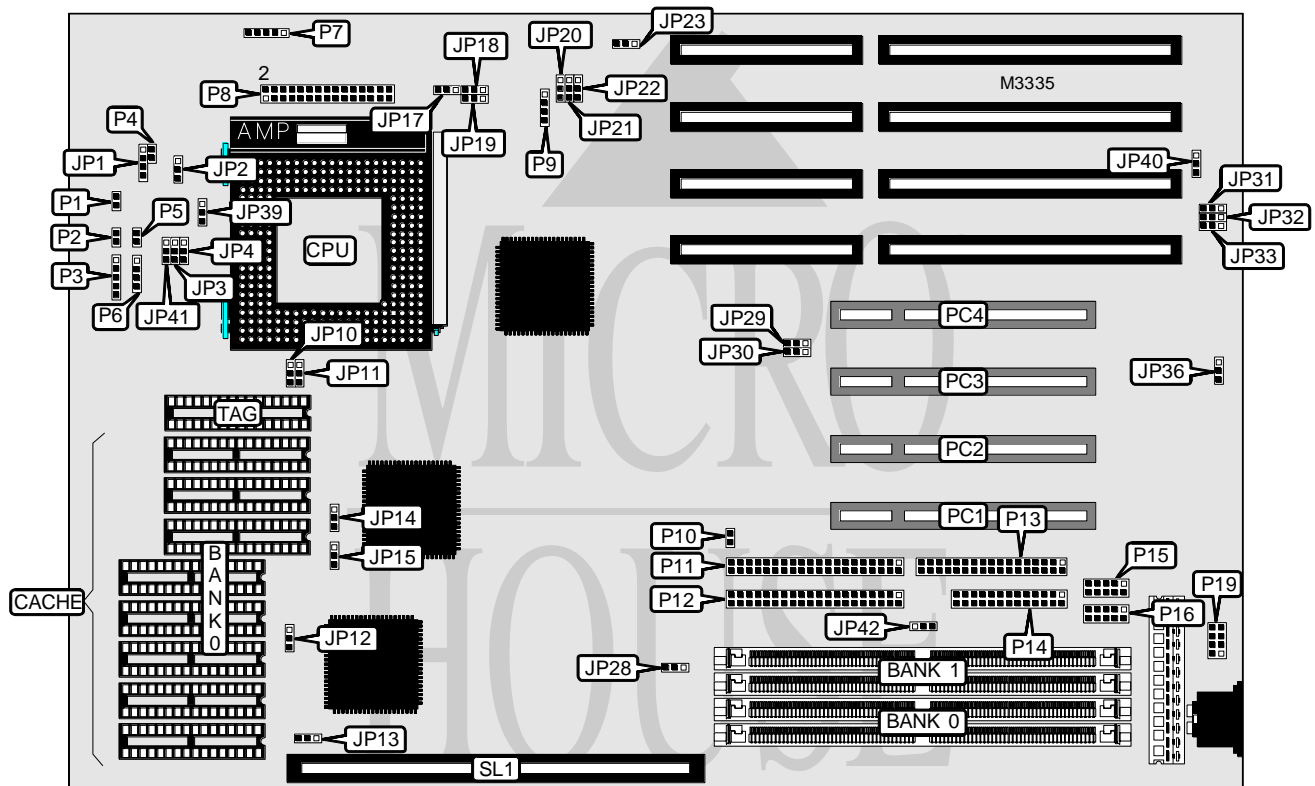


OCEAN INFORMATION SYSTEMS, INC.

RHINO 5

Processor	CXM1/Pentium
Processor Speed	75/90/100/120/133/150MHz
Chip Set	OPTI
Video Chip Set	None
Maximum Onboard Memory	128MB (EDO supported)
Maximum Video Memory	None
Cache	256/512/1024KB
BIOS	Award
Dimensions	330mm x 215mm
I/O Options	32-bit PCI slots (4), floppy drive interface, IDE interfaces (2), parallel port, PS/2 mouse interface, serial ports (2), cache slot, IR connector, VRM connector
NPU Options	None



Continued on next page...

OCEAN INFORMATION SYSTEMS, INC.

RHINO 5

... continued from previous page

CONNECTIONS			
Function	Label	Function	Label
Reset switch	P1	IDE interface 2	P11
Turbo LED	P2	IDE interface 1	P12
Power LED & keylock	P3	Floppy drive interface	P13
Chassis fan power	P4	Parallel port	P14
Turbo switch	P5	Serial port 1	P15
Speaker	P6	Serial port 2	P16
IR connector	P7	PS/2 mouse interface	P19
VRM connector	P8	32-bit PCI slots	PC1 - PC4
External battery	P9	Cache slot	SL1
IDE interface LED	P10		

USER CONFIGURABLE SETTINGS		
Setting	Label	Position
í Fan voltage select 5v	JP1	Pins 1 & 2 closed
Fan voltage select 12v	JP1	Pins 2 & 3 closed
í Battery type select internal	JP20	Pins 2 & 3 closed
Battery type select external	JP20	Pins 1 & 2 closed
í CMOS memory normal operation	JP21	Pins 2 & 3 closed
CMOS memory clear	JP21	Pins 1 & 2 closed
í Factory configured - do not alter	JP22	Pins 2 & 3 closed
í Factory configured - do not alter (PCI clock = CPU clock/2)	JP23	Pins 2 & 3 closed
Parallel port IRQ select IRQ7	JP31	Pins 2 & 3 closed
Parallel port IRQ select IRQ5	JP31	Pins 1 & 2 closed
í One floppy drive installed	JP36	Pins 1 & 2 closed
Two floppy drives installed	JP36	Pins 2 & 3 closed
í Power good signal detect from power supply	JP40	Pins 1 & 2 closed
Power good signal detect from board	JP40	Pins 2 & 3 closed
Jumper information unavailable	JP41	N/A

DRAM CONFIGURATION		
Size	Bank 0	Bank 1
2MB	(2) 256K x 32	None
4MB	(2) 512K x 32	None
4MB	(2) 256K x 32	(2) 256K x 32
6MB	(2) 256K x 32	(2) 512K x 32
8MB	(2) 1M x 32	None
8MB	(2) 512K x 32	(2) 512K x 32
10MB	(2) 256K x 32	(2) 1M x 32
12MB	(2) 512K x 32	(2) 1M x 32
16MB	(2) 2M x 32	None
16MB	(2) 1M x 32	(2) 1M x 32
18MB	(2) 256K x 32	(2) 2M x 32

Continued on next page...

OCEAN INFORMATION SYSTEMS, INC.

RHINO 5

... continued from previous page

DRAM CONFIGURATION (CON'T)		
Size	Bank 0	Bank 1
20MB	(2) 512K x 32	(2) 2M x 32
24MB	(2) 1M x 32	(2) 2M x 32
32MB	(2) 4M x 32	None
32MB	(2) 2M x 32	(2) 2M x 32
34MB	(2) 256K x 32	(2) 4M x 32
36MB	(2) 512K x 32	(2) 4M x 32
40MB	(2) 1M x 32	(2) 4M x 32
48MB	(2) 2M x 32	(2) 4M x 32
64MB	(2) 8M x 32	None
64MB	(2) 4M x 32	(2) 4M x 32
66MB	(2) 256K x 32	(2) 8M x 32
68MB	(2) 512K x 32	(2) 8M x 32
72MB	(2) 1M x 32	(2) 8M x 32
80MB	(2) 2M x 32	(2) 8M x 32
96MB	(2) 4M x 32	(2) 8M x 32
128MB	(2) 8M x 32	(2) 8M x 32

Note: Board accepts EDO memory. Board also accepts x 36 SIMMs.

DRAM JUMPER CONFIGURATION	
Type	JP28
Fast page mode	Pins 1 & 2 closed
EDO	Pins 2 & 3 closed

CACHE CONFIGURATION			
Size	Bank 0	TAG	SL1
256KB (A)	(8) 32K x 8	(1) 32K x 8	Not installed
256KB (B)	None	(1) 32K x 8	Installed
512KB (A)	(8) 64K x 8	(1) 32K x 8	Not installed
512KB (B)	None	(1) 32K x 8	Installed
1MB	(8) 128K x 8	(1) 32K x 8	Not installed

CACHE JUMPER CONFIGURATION			
Size	JP3	JP4	JP10
256KB (A)	Pins 2 & 3 closed	Pins 1 & 2 closed	Pins 2 & 3 closed
512KB (A)	Pins 1 & 2 closed	Pins 1 & 2 closed	Pins 1 & 2 closed
1MB	Pins 1 & 2 closed	Pins 2 & 3 closed	Pins 1 & 2 closed

CACHE TYPE CONFIGURATION	
Type	JP42
Asynchronous	Pins 1 & 2 closed
Synchronous	Pins 2 & 3 closed

Continued on next page...

OCEAN INFORMATION SYSTEMS, INC.
RHINO 5

... continued from previous page

CACHE VOLTAGE SELECTION				
Voltage	JP12	JP13	JP14	JP15
3.3v	Pins 1 & 2 closed	Pins 1 & 2 closed	Pins 1 & 2 closed	Pins 1 & 2 closed
5v	Pins 2 & 3 closed	Pins 2 & 3 closed	Pins 2 & 3 closed	Pins 2 & 3 closed

CPU SPEED SELECTION		
Speed	JP29	JP30
75MHz	Pins 1 & 2 closed	Pins 2 & 3 closed
90MHz	Pins 2 & 3 closed	Pins 1 & 2 closed
100MHz	Pins 1 & 2 closed	Pins 1 & 2 closed
120MHz	Pins 2 & 3 closed	Pins 1 & 2 closed
133MHz	Pins 1 & 2 closed	Pins 1 & 2 closed
150MHz	Pins 2 & 3 closed	Pins 1 & 2 closed

CPU TYPE SELECTION	
Type	JP11
Cyrix	Pins 2 & 3 closed
Intel	Pins 1 & 2 closed

CPU MULTIPLIER SELECTION		
Multiplier	JP2	JP39
1.5x	Pins 2 & 3 closed	Pins 2 & 3 closed
2x	Pins 1 & 2 closed	Pins 2 & 3 closed
2.5x	Pins 1 & 2 closed	Pins 1 & 2 closed

VRM SELECTION	
Type	P8
í VRM not installed (P54C/P54CQS/P54CS)	Pins 7 & 9, 8 & 10, 11 & 13, 12 & 14 closed
VRM installed (P55C)	Installed

DMA CHANNEL SELECTION		
Channel	JP32	JP33
í 1	Pins 1 & 2 closed	Pins 1 & 2 closed
3	Pins 2 & 3 closed	Pins 2 & 3 closed

PS/2 MOUSE SELECTION			
Setting	JP17	JP18	JP19
í Enabled	Pins 1 & 2 closed	Pins 2 & 3 closed	Pins 2 & 3 closed
Disabled	Pins 2 & 3 closed	Pins 1 & 2 closed	Pins 1 & 2 closed